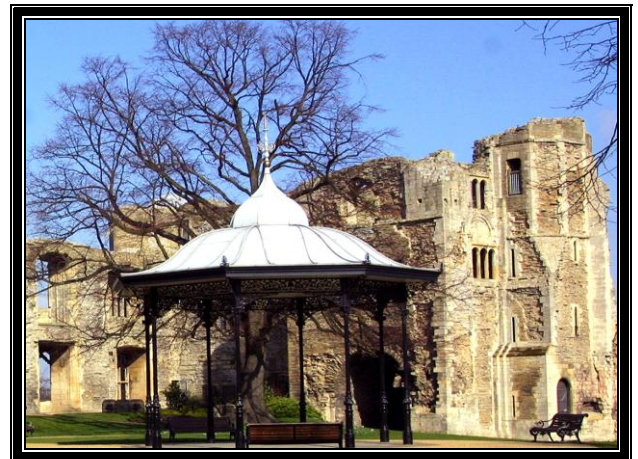
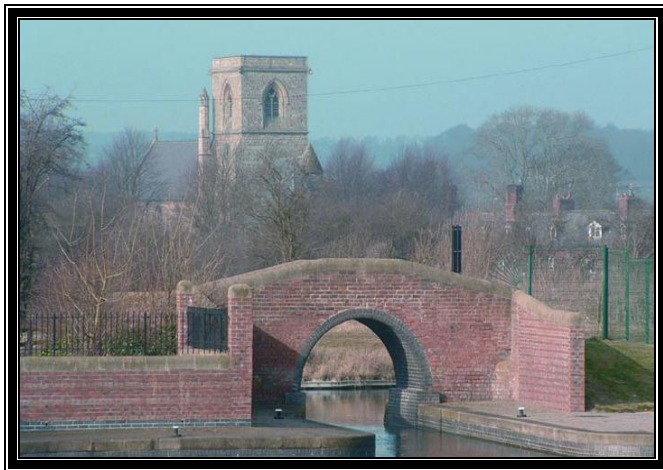


BASSETLAW, NEWARK AND SHERWOOD COMMUNITY SAFETY PARTNERSHIP



Information Brochure 2012 – 2013



**Our aim is to make
Bassetlaw, Newark and Sherwood
a safer, stronger and welcoming place for
ALL to live, work and visit**

INTRODUCTION AND KEY MESSAGE FROM THE CHAIR OF THE BASSETLAW, NEWARK AND SHERWOOD COMMUNITY SAFETY PARTNERSHIP

The Bassetlaw, Newark and Sherwood Community Safety Partnership is a merged partnership covering a huge and diverse geographical area. We have some of the wealthiest, and some of the most deprived, areas within the county. Reflecting this, our communities have greatly differing needs, expectations and aspirations, and with this comes many different social and criminal issues, ranging from metal thefts and agricultural crime to town centre violence and misuse of alcohol and Class 'A' drugs. These, accompanied by the wider determinants of offending around health, education and employment opportunities, make the tackling of crime and disorder a task for partners and our communities working together.

Therefore, as a partnership, we continue to evolve the way we work and, across the partnership, take a flexible approach to targeting crime and criminal behaviour. This has allowed us to really tackle the issues at hand; from long term projects of setting up 'drop in' centres offering daily support for vulnerable people, to one off wide scale marking schemes to reduce theft of metals. We also engage communities where we can, having some really thriving Safer Neighbourhood Groups, community volunteers and Street Pastors.

We are always striving to provide value for money and, as a partnership, have worked together against a backdrop of reduced funding to continue our good work and provide resources for the Partnership. We are also keen to consider new and innovative projects and ideas to target problems. As an example, the 'Partnership Plus' process was first explored and developed in the Bassetlaw, Newark and Sherwood area; a practice since adopted across the county.

The Partnership was also one of the first areas to work closely with the Police on multi agency scrap metal operations against scrap metal yards, which have also been rolled out across the county, and has recently piloted a scheme to support domestic violence victims that is now being considered for roll out in other Districts.

As a partnership we know that we are far from having all the answers and recognise that improvements can always be made. This document outlines some of the work we do, but we would welcome an opportunity to discuss with you the problems our communities face, the work we have progressed, and hope to progress in the future, and the challenges that our organisations, as a merged partnership, have faced.

Andrew Muter
Chief Executive Newark and Sherwood District Council
Chair of the Bassetlaw, Newark and Sherwood CSP



BASSETLAW, NEWARK AND SHERWOOD COMMUNITY SAFETY PARTNERSHIP (CSP):

is the largest combined rural Community Safety Partnership in the county of Nottinghamshire, with a growing population made up of diverse communities, including:

- the Market Towns of Worksop, Retford, Newark and Southwell and their surroundings
- distinctive communities with a strong coalfield history
- rural villages and parishes

WHAT IS THE BASSETLAW, NEWARK AND SHERWOOD CSP?

Community Safety Partnerships (CSPs) were set up as statutory bodies under sections of the Crime and Disorder Act 1998 and aim to bring communities together to tackle crime and anti social behaviour in the local community. There are currently 310 CSPs in England and 22 in Wales.

The CSP is made up of a range of different agencies, some of which are statutory (required to be there by law) and some of which are voluntary or co-operating members. This includes Registered Social Landlords and partners from the voluntary sector.

The two CSPs of Bassetlaw, Newark and Sherwood CSP, or CDRPs (Crime and Disorder Reduction Partnerships) as they were previously known, began to work closely together in September 2005. The formal merger of the two Partnerships took place on the 1 May 2010, which enabled the new Partnership to develop the close links already forged by the initial co-operative activities, and to enable shared expertise and resources which results in efficiency savings and continued improvements in reductions in crime and disorder.

VISION

The vision for the Bassetlaw, Newark and Sherwood Community Safety Partnership is:

Making Bassetlaw, Newark and Sherwood a safer, stronger and welcoming place for ALL to live, work and visit.

Partners have agreed core values - the principles driving the way we will work together.....

- To make the public feel safe whilst living in and visiting Bassetlaw, Newark and Sherwood.
- To listen to the public and act appropriately to target the issues identified.
- To deliver, as a Partnership, to reduce key problems across the area.
- To ensure the public is aware of what the Partnership delivers to reduce crime and anti social behaviour across the area.
- To be transparent and deal effectively with complaints.

WHO IS THE BASSETLAW, NEWARK AND SHERWOOD COMMUNITY SAFETY PARTNERSHIP?

The responsible authorities of the CSP are:

- **Local Authorities** (Bassetlaw District Council, Newark and Sherwood District Council and Nottinghamshire County Council)
- **NHS Bassetlaw and NHS Nottinghamshire County (PCTs - Primary Care Trusts)** Currently in transition as a result of NHS reforms.
- **Nottinghamshire Fire and Rescue Service**
- **Nottinghamshire Police**
- **Nottinghamshire Police Authority**
- **Nottinghamshire Probation Trust**

The responsible authorities work together to develop and implement strategies to protect their local communities from crime and to help keep people safe. They work out local approaches to deal with issues including anti social behaviour, drug or alcohol misuse and re-offending.

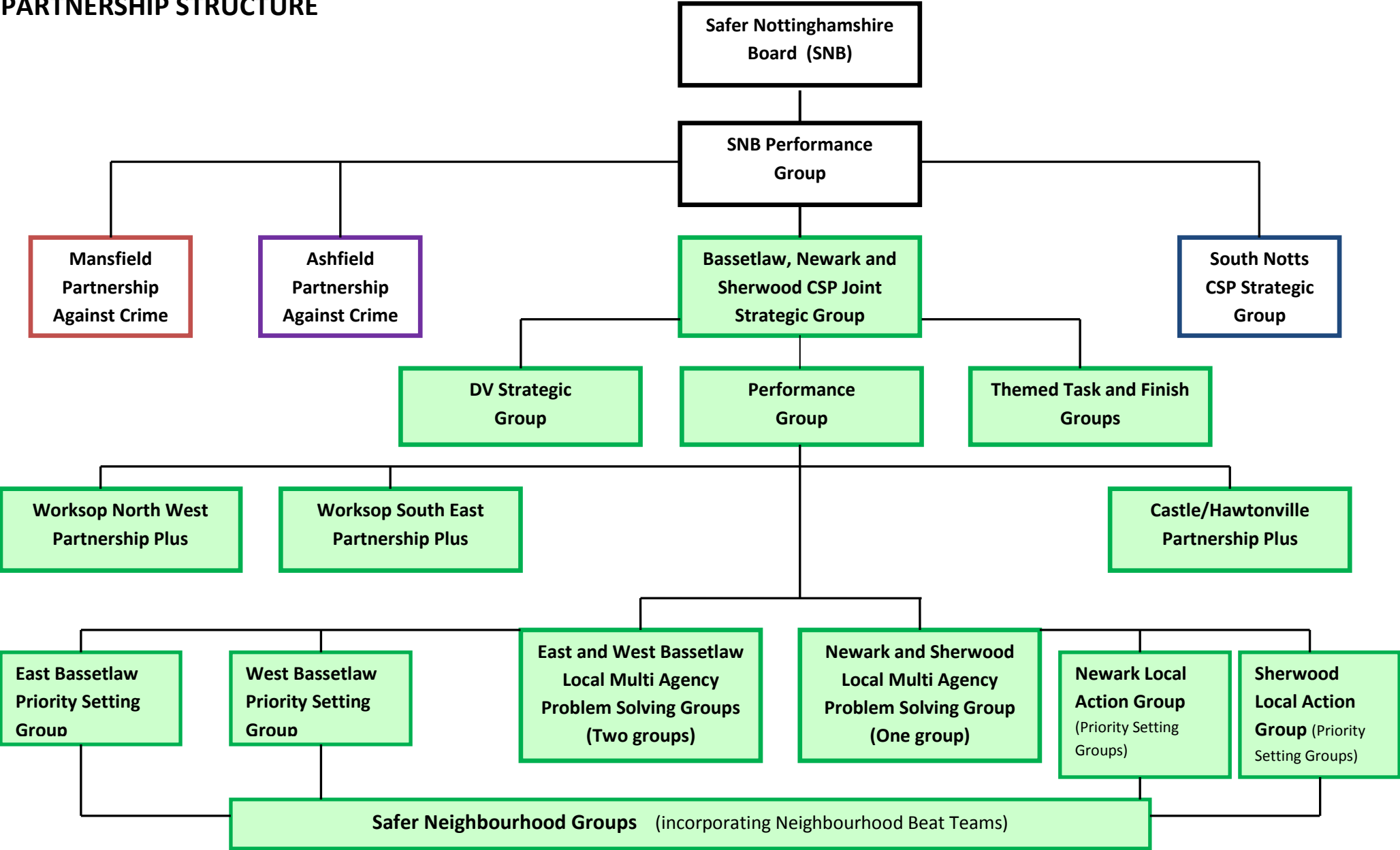
The responsible authorities also work with other agencies that play a key role, including community groups and registered social landlords.

Each responsible authority contributes their own local knowledge, professional expertise and resources to ensure that the issues that concern local people are prioritised and addressed.

The Partnership also involves members from the voluntary and community sectors. These include:

- Elected Representatives of Bassetlaw and Newark and Sherwood District Councils and Nottinghamshire County Council.
- Elected Representatives from the Parish and Town Councils in the Bassetlaw and Newark and Sherwood District areas.
- Bassetlaw CVS
- Newark and Sherwood CVS
- Newark Women's Aid
- Nottinghamshire Women's Aid
- Registered Social Landlords
- Tenants and Residents Groups

PARTNERSHIP STRUCTURE



PARTNERSHIP GROUPS

- **Safer Nottinghamshire Board (SNB)**

This group is attended by the Chief Executives/Directors of the responsible authorities and has the aim of reducing crime and improving satisfaction of residents in the wider Nottinghamshire area. This group determines the County Strategy.

- **SNB Performance Group**

This group is chaired by an Assistant Chief Constable of Nottinghamshire Police, and holds the Community Safety Partnership Chairs to account around performance and delivery issues. Chairs of all Community Safety Partnerships within Nottinghamshire are represented at this group, which meets on a quarterly basis.

- **Bassetlaw, Newark and Sherwood Joint Strategic Group**

This group is co-chaired by the two District Council's Chief Executives (with the role of Chair and Deputy Chair alternating between the two).

This group reports to the SNB Performance Group.

The membership of this group are of a senior management/executive level and holds the Bassetlaw, Newark and Sherwood Performance Group to account and tasks this group with a range of strategic actions.

This group is also responsible for making strategic level decisions on issues relating to the Partnership and wider issues.

- **Performance Group**

This group looks at the practical implications of the strategic objectives as set by the Joint Strategic Group and monitors performance, allocates resources and directs budgets to meet performance objectives and ensure best value.

This group holds partner agencies to account for activities undertaken to deal with crime and disorder.

The group has the authority to make business level decisions and is chaired by a Police Superintendent.

- **Domestic Violence Strategic Group**

The Domestic Violence Strategic Group meets bi-monthly to ensure good practice and improve support to adults and children affected by domestic violence. Gerald Connor, Community Safety Manager, Bassetlaw District Council is the Chair.

The Group has developed a delivery plan covering issues such as publicity, awareness raising, campaigns and training. This plan contributes to the County Domestic Violence Strategic Plan. A Practitioners' Domestic Violence Network also meets quarterly, giving front line workers the chance to increase their understanding of domestic violence issues and awareness of services available.

- **Themed Task and Finish Groups**

Task and Finish Groups will be arranged to deal with crime and disorder issues that arise and require problem solving by the Partnership and partner agencies.

- **Partnership Plus Groups**

The three areas listed below have been prioritised for action to improve the quality of life for residents who have experienced higher than average levels of crime and disorder. The Partnership focuses on these top areas because they account for a high proportion of all crime and disorder and, by reducing the levels of crime and disorder in the most problematic areas, we can have a greater impact on reducing all crime and disorder in Bassetlaw, Newark and Sherwood as a whole.

The areas of Castle, Worksop North West and Worksop South East are included in the 'top 15' areas for the highest levels of crime and disorder in Nottinghamshire and, therefore, will be receiving funding from the Safer Nottinghamshire Board.

- **Castle** (Newark Town Centre ward)/**Hawtonville**
- **Worksop North West**
- **Worksop South East**

- **Local Multi Agency Problem Solving Groups (LMAPS)**

LMAPS groups aim to protect and support victims of Anti Social Behaviour and vulnerable individuals and put in place action plans to prevent further incidents. This group also monitors and manages perpetrators of anti social behaviour, putting appropriate multi agency actions in place to prevent further incidents.

There are three groups in the Partnership area, which are chaired by the Local Neighbourhood Police Inspectors.

- | | | |
|------------------------------|---|---|
| - East Bassetlaw | - | chaired by the East Bassetlaw Police Inspector |
| - West Bassetlaw | - | chaired by the West Bassetlaw Police Inspector |
| - Newark and Sherwood | - | chaired by the Newark and Sherwood Police Inspector |

- **Priority Setting Groups**

These groups meet regularly and receive reports from the local area Safer Neighbourhood Group representatives and attempt to problem solve any issues raised by local communities. Issues and concerns that cannot be resolved at this level are referred to the LMAPS group.

- **East Bassetlaw**
- **West Bassetlaw**
- **Newark (Newark Local Action Group)**
- **Sherwood (Sherwood Local Action Group)**

- **Safer Neighbourhood Groups**

These groups are the bedrock of community engagement within the Partnership structure and allow for residents to discuss their concerns and views about Community Safety with their local Neighbourhood Beat Team and to ensure that issues they raise are brought to the attention of the Community Safety Partnership.

There are over thirty Safer Neighbourhood Groups within the Bassetlaw, Newark and Sherwood CSP area, and the majority of them meet bi-monthly or quarterly and are often chaired by a locally elected representative, such as a District, Parish or County Councillor.

WHAT ARE THE STRATEGIC PRIORITIES?

Regional Priorities:

The Safer Nottinghamshire Board has identified seven key themes that have a negative impact on the residents of Nottinghamshire:

- Serious Acquisitive Crime (including Burglary of people's homes, car crime and robbery)
- Violent Crime
- Domestic Abuse
- Anti Social Behaviour
- Drug and Alcohol misuse
- Youth issues (including youth crime)
- Hate Crime

Partnership Priorities:

The Partnership has agreed that the following reductions in crime will be prioritised in 2012/2013:

All Crime

Area	2011/12 Outturn	2012/13 Volume Reduction	2012/13 Target Outturn	2012/13 % Reduction
BNS	13,387	1,071	12,316	8.0%
Bassetlaw	7,459	597	6,862	8.0%
N&S	5,928	474	5,454	8.0%
Worksop North West	894	161	733	18.0%
Worksop South East	986	177	809	18.0%
Castle/ Devon	1555	280	1275	18.0%

Violent Crime¹ (Violence Against the Person, Sexual Offences and Robbery)

Area	2011/12 Outturn	2012/13 Volume Reduction	2012/13 Target Outturn	2012/13 % Reduction
BNS	2,489	199	2,290	8.0%
Bassetlaw	1,301	104	1,197	8.0%
N&S	1,188	95	1,093	8.0%

Anti Social Behaviour² (Personal ASB, Nuisance ASB and Environmental ASB)

Area	2011/12 Outturn	2012/13 Volume Reduction	2012/13 Target Outturn	2012/13 % Reduction
BNS	10,969	1,097	9,872	10.0%
Bassetlaw	6,043	604	5,439	10.0%
N&S	4,926	493	4,433	10.0%

Local Priorities:

Partnership Plus

The Strategic Assessment 2011/12 adopted a Countywide approach to identifying Partnership Plus areas. Each Ward in the County was scored by volume and by rate per 1,000 population and an average rank calculated for each of the seven categories listed below (with each component part given an equal weighting). The Wards within each Community Safety Partnership were ranked in ascending order and the top Wards were attributed Partnership Plus status as these have the greatest historical cross-theme challenges. Where they were also in the County top 15 Wards, they were adopted by the Safer Nottinghamshire Board.

The following key categories were included:

ASB	-	core police ASB, deliberate secondary fires and criminal damage.
Domestic abuse	-	domestic related crime and domestic incidents.
Drugs and alcohol	-	positive tests on arrest, alcohol related crime, alcohol related incidents and drug offences.
Hate related	-	hate crimes and incidents.
Serious acquisitive crime	-	domestic burglary, vehicle crime and robbery.
Violence	-	all violent offences and ambulance call outs to assaults/ sexual assaults.
Youth issues	-	supervised youth offenders, youth related crime and youth related ASB.

The following data sets were included:

Police recorded crime data
Police recorded incident data
Police recorded ASB data
Nottinghamshire Fire and Rescue Service deliberate secondary fire data
Police Youth Justice database
Police 'Bridgit' data
Youth Offending Service supervised young offender data
East Midlands Ambulance Service assault data
Office for National Statistics 2009 Ward population data

Partnership Plus Areas:

Castle/Hawtonville Partnership Plus

The delivery plan aims to achieve the 18% reduction across ALL CRIME in the Partnership Plus areas, but with particular emphasis on the following issues.

- Anti Social Behaviour
- Night Time Economy and Violence - including Domestic Abuse, Drug and Alcohol Misuse)
- Theft (including shop theft, cycle theft, metal theft and burglary other - commercial and shed)
- Chatham Court Drop in Centre project 'The Hub'

Workshop North West Partnership Plus and **Workshop South East Partnership Plus** have a joint delivery plan aimed at achieving an 18% reduction across ALL CRIME in the two Partnership Plus areas. These include:

- Common Assault (including Domestic Abuse and Night Time Economy)
- Anti Social Behaviour
- Burglary Other (sheds)
- Theft (from shops, vehicles and other)
- Fires (Arson)
- Substance Misuse (Drugs and Alcohol)
- Vehicle Nuisance
- Criminal Damage (other)

OUR RESOURCES:

Staffing Structure:

The Partnership Staff consist of the following:

- | | | |
|------------------------------------|---|--|
| • Community Safety Managers | - | Gerald Connor (Bassetlaw)
Lisa Lancaster (Newark and Sherwood) |
| • Partnership Staff | - | Eleanor Brockel (Partnership Analyst)
Nicki Richards (DV Co-ordinator)
Stephanie West (Partnership Officer)
Izzy Majchrzyk (ASB Victim Support Officer)
Andy Peacock (Community Safety Officer) |

Each District Council has an **Anti Social Behaviour Team** and a **Family Intervention Worker**. Newark and Sherwood are in the process of employing a further Family Intervention Worker, with specific emphasis on child poverty.

Funding position:

Funding has been allocated to each of the Partnership Plus areas for 2012/2013 as follows:

- | | | |
|---|---|------------|
| • Castle/Hawtonville Partnership Plus | - | £27,600.00 |
| • Workshop North West Partnership Plus | - | £27,600.00 |
| • Workshop South East Partnership Plus | - | £27,600.00 |

This funding will be allocated to projects allied to the priorities listed above, with particular emphasis on sustainability.

OUR KEY PERFORMANCE SUCCESSES:

Partnership Plus

In 2011/2012, the Partnership had four Partnership Plus areas, with the ward of Harworth in Bassetlaw, being the fourth. As a result of effective partnership working in this area, there was an exceptional reduction in all crime of 32%, which has resulted in this area no longer being a Partnership Plus area and work is underway to produce an exit strategy to ensure that the problems that were being experienced by this community no longer arise.

Bassetlaw:

- | | | |
|-------------------------|---|--|
| Robbery | - | In 2011/2012, there was a 19% reduction in Robbery, which was reflected in the District's performance when compared against the iQuanta Most Similar Group (MSG) of peers. The District is now performing better than the average of this group. |
| VAP* with injury | - | There has been a 14% reduction in this crime type, and again, this is reflected in the MSG group, where Bassetlaw is performing better than the average. |

Newark and Sherwood:

- | | | |
|--------------------------|---|--|
| Burglary Dwelling | - | There has been a reduction of 26% in Burglary Dwelling in Newark and Sherwood in the year 2011/2012. This has resulted in the District performing at well below the MSG average. |
| VAP* with injury | - | The reduction in this crime area has been -15%, which is, again, superior to the MSG average performance. |

(*VAP - Violence Against the Person)

- The reduction in robbery and violence has been as a result of extensive partnership work carried out in and around our town centres for the past 2 years.
- The extension of the Designated Prohibited Place Orders has reduced on street drinking opportunities.
- The targeted use of Taxi & Street Marshalls at key times, eg, Bank Holiday weekends has had a huge impact on reducing violence in the town centres.
- Robust management of licensed premises including the use of CCTV and door supervisors, accompanied by targeted police operations has had an impact in the town centres, resulting in improved behaviour and reduced violence.
- "Stay Safe and have Fun" awareness raising campaigns, including seasonal campaigns and those linked to large scale sporting events have also had a significant impact.
- Operation Awarn ran over the World Cup and August bank holiday periods. The operation was a joint effort between Police Public Protection Unit officers and the Independent Domestic Violence Advocacy service. The aim of the operation was to provide a prompt and effective response to reported domestic abuse cases by use of a dedicated domestic violence vehicle
- Activities targeted at the most prolific Burglary Dwelling Offenders and target hardening and prevention work, has impacted greatly on the number of these offences.

KEY CONTACTS:

- **Andrew Muter** - **Chief Executive of Newark and Sherwood District Council and Chair of the Partnership**
01636 655200
andrew.muter@nsdc.info
- **Gerald Connor** - **Community Safety Manager Bassetlaw**
01909 533153
gerald.connor@bassetlaw.gov.uk
- **Lisa Lancaster** - **Community Safety Manager Newark and Sherwood**
01636 655232
lisa.lancaster@nsdc.info