



Nottinghamshire
**POLICE & CRIME
COMMISSIONER**

Nottinghamshire Police and Crime Needs Assessment

January 2020

What is the PCNA?

Shared overview of the main crime, community safety and criminal justice issues, risks and threats facing the area

- The PCNA aims to inform:-
 - Refresh of the 2020 to 2024 Police and Crime Plan
 - Organisational planning for 2020 and beyond
 - Grants and commissioning process for 2020 - 2022
- Brings together a wide range of partnership data and stakeholder perspectives
- Updated annually

Information used to inform the PCNA



The usual



Key statistics: Police, CRC, YJS, Victim Services, Public Health, Crime Survey England & Wales, Commercial Victimization Survey, Performance reports, Public Health JSNAs, audit and inspection findings
Wider determinants of crime, victimisation and vulnerability, Strategic Risk Registers, CDP Strategic Assessment, HMICFRS VfM Profiles

New information



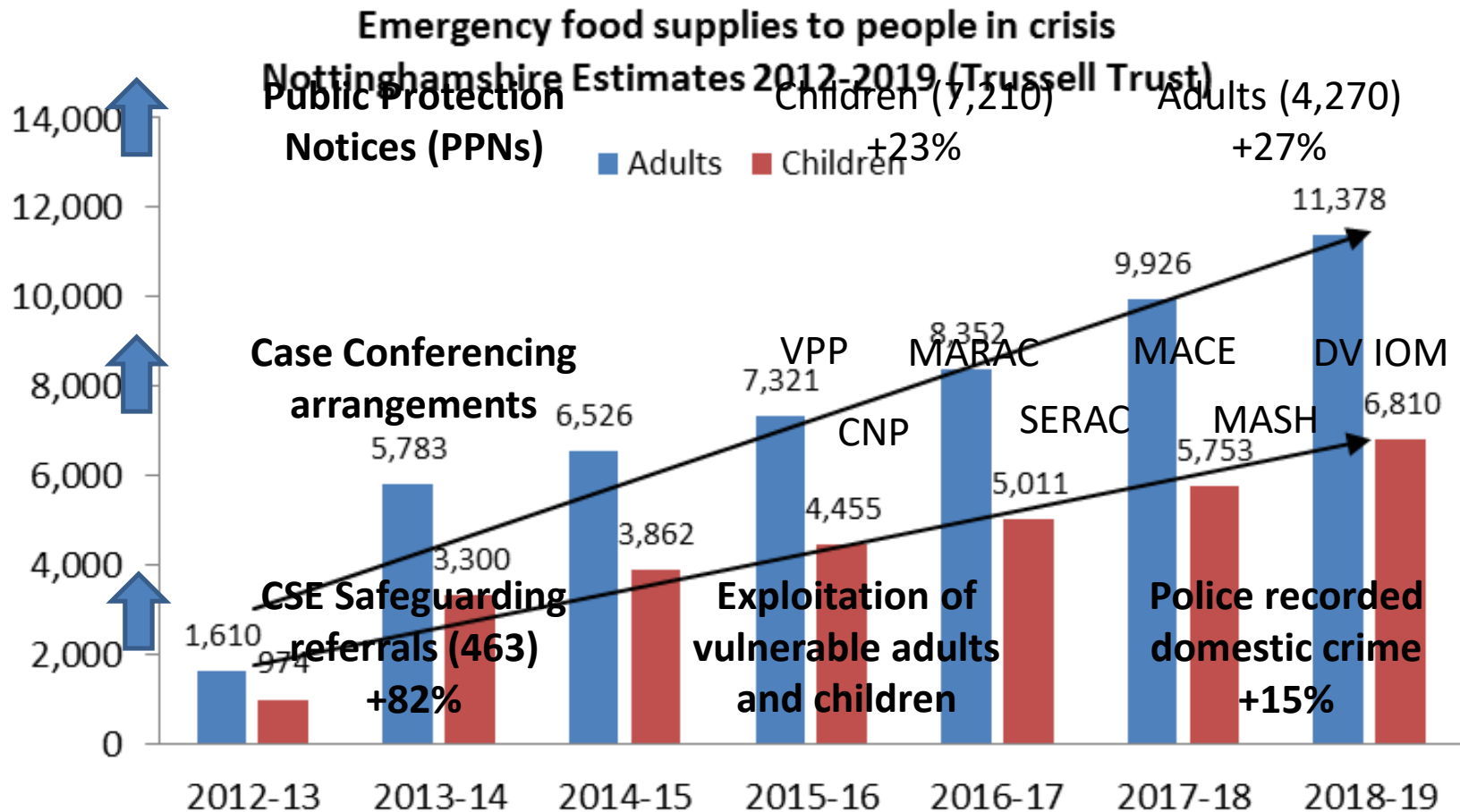
Nottinghamshire Police and Crime Survey trend data , Rural Crime Survey
Nottinghamshire Force Management Statement
Needs Assessments: Sexual Violence and Abuse Services
Thematic Intelligence Assessments / Problem Profiles / Severity Profiles
Independent reviews: Drug Treatment, Youth Diversion
Management statistics: Liaison & Diversion, Cyber/ Fraud Protect

Pending



Serious Violence Reduction JSNA
Focus groups, Practitioner input / Professional judgement
Futures Scanning
Updated Strategic Threat Assessment (NIM)
Updated MoRiLE Assessment / Prioritisation Matrices

Rising Complexity and Safeguarding Demand



Rising Complexity and Safeguarding Demand

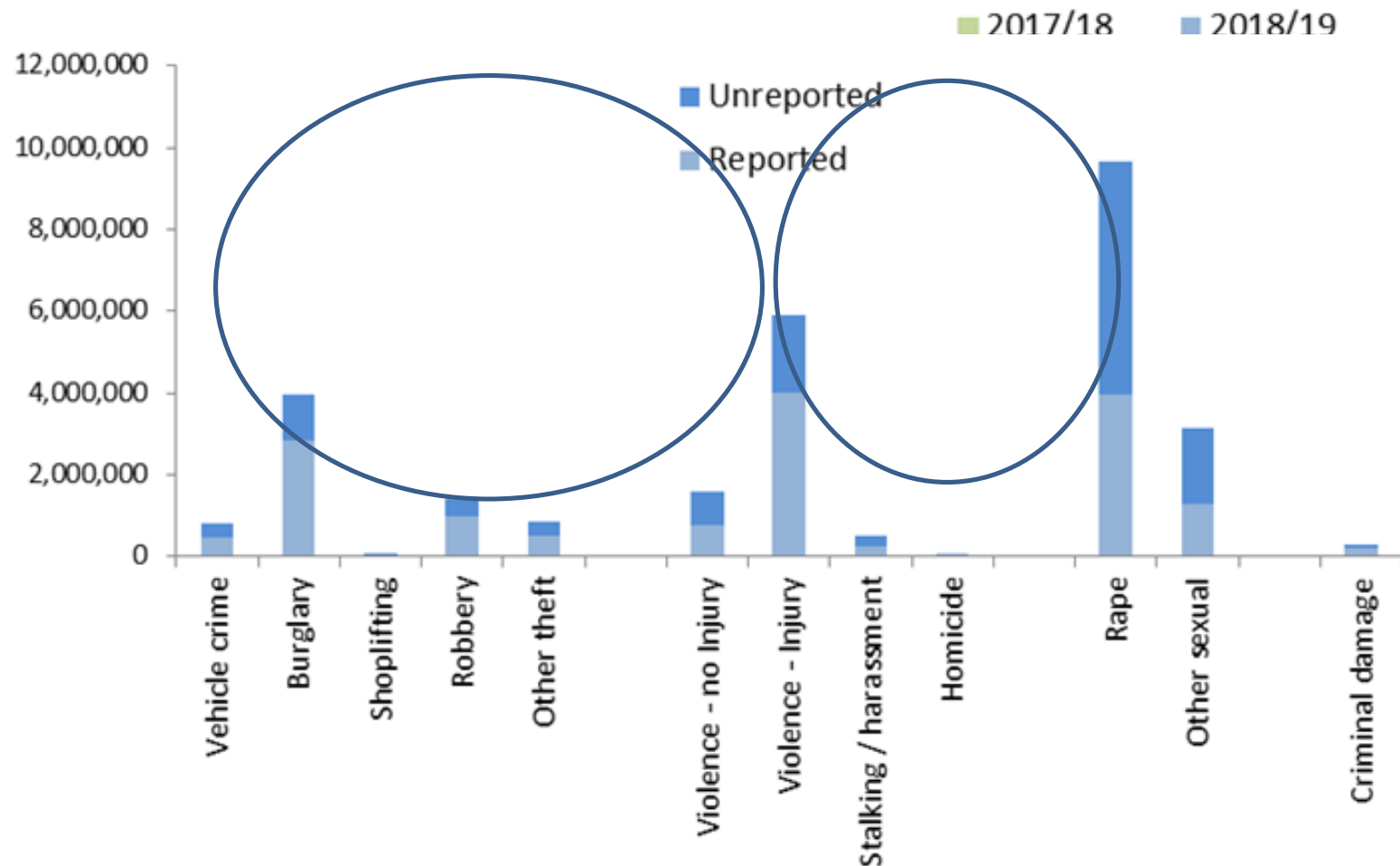


Presentation of (multiple) complex need linked to offending, victimisation and risk of harm is likely to continue to rise over the coming year as a result of increasing underlying need, public sector capacity constraints and ongoing improvements in proactive identification and management of risk

- **Rising mental health demand impacting on local services**
- **Rising levels of illicit and problematic drug use**
- **Increasing levels of financial hardship**
- **Acute pressures on key public services**
- **Ongoing improvements in identification and management of risk**

Risk of Crime: Changing Trends

Profile of Crime Harm – Including Estimated Unreported (Nottinghamshire)



Risk of Crime: Changing Trends


Proportion of Crime Reported to Nottinghamshire Police And Reasons for not reporting 2018 to 2019

100.0% 

<u>Hate Crimes and Incidents</u>	2017/18	2018/19	Change	
			%	Actual
Disability	147	210	+42.9%	+63
Race	1,546	1,602	+3.6%	+56
Religion	141	199	+41.1%	+58
Sexual Orientation	282	255	-9.6%	-27
Transgender	52	62	+19.2%	+10
Alternative Sub-Culture	13	32	+146.1%	+19
Misogyny	82	121	+47.6%	+39
Other	166	136	-18.1%	-30
Total	2,429	2,617	+7.7%	+188

Burglary Robbery Physical Violence Other Theft Criminal Damage Car Crime Harassment Sexual Violence Online Fraud Computer Misuse

 Fear of reprisal / making matters worse

 Lacked confidence / Didn't feel comfortable

Risk of Crime: Changing Trends



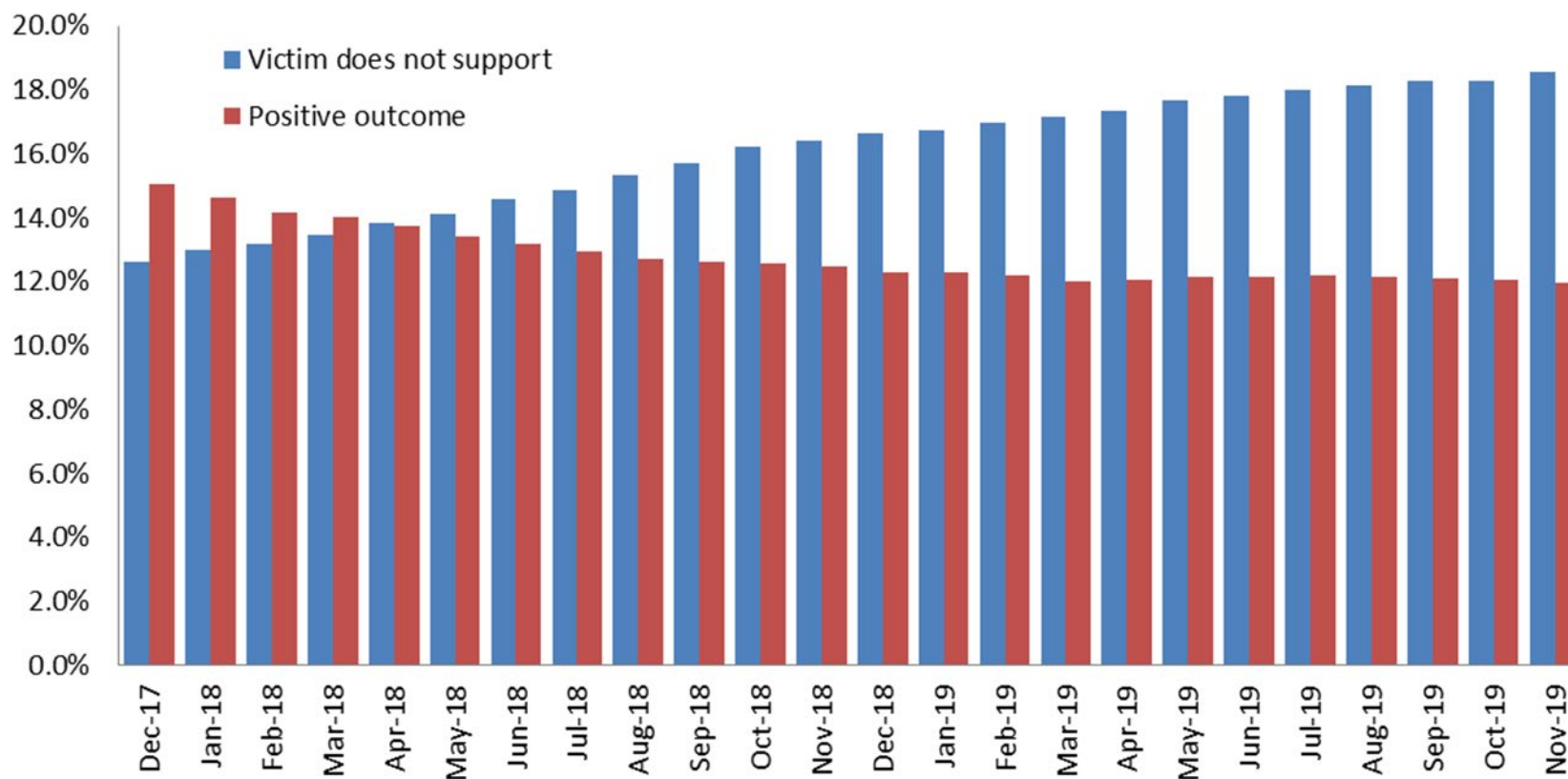
Police recorded victim-based crime is expected to increase over the next year driven by increased recording of violence without injury, improvements in crime recording, genuine increases in fraud, increases in police pro-activity and more reporting as a result of increased public confidence in / access to services

- **We are developing a better understanding of underlying trends in crime**
- **Overall victim-based crime has remained stable over the last year**
 - Rises in on-line fraud, shoplifting and robbery
- **Overall crime harm has been reducing**
 - Greater reductions in areas of priority focus – despite more recorded
- **Priority areas of focus include:**

Serious / weapon enabled violence, domestic violence, rape and serious sexual violence, adult and child exploitation, drug supply, hate crime, burglary
- **Understanding of Hate Crime and Anti-social Behaviour remains limited**

Other Notable Challenges

All Victim-Based Crime - Nottinghamshire
% Victims Withdrawing Support Versus Positive Crime Outcomes



Other Notable Challenges

- **An efficient and effective Criminal Justice System**
 - Reductions in court time – delays in commencement of complex cases
 - Increasing proportion of victims not supporting further police action
 - Low positive outcome rates for rape
 - Disclosure of evidence and rising digital demand
- **Children and young people**
 - Increasing concentration of vulnerability and harm
 - Growing reach of serious and organised criminality – a changing threat
 - Significant gaps in youth services and lack of joined up approach
 - Online safety and ‘technologically-assisted harmful behaviour’
- **Disparities in public trust and confidence in the police**
 - Growing divergence in trust and confidence between city and county
 - Trust and confidence among New and emerging communities
 - Impact of increased use of stop and search, Taser, new legislation



For further information about the Nottinghamshire Police and Crime Needs Assessment please contact

Dan Howitt, Head of Research and Information, Nottinghamshire OPCC

daniel.howitt13452@nottinghamshire.pnn.police.uk