

Appendix B

Accompanying Tables and Charts

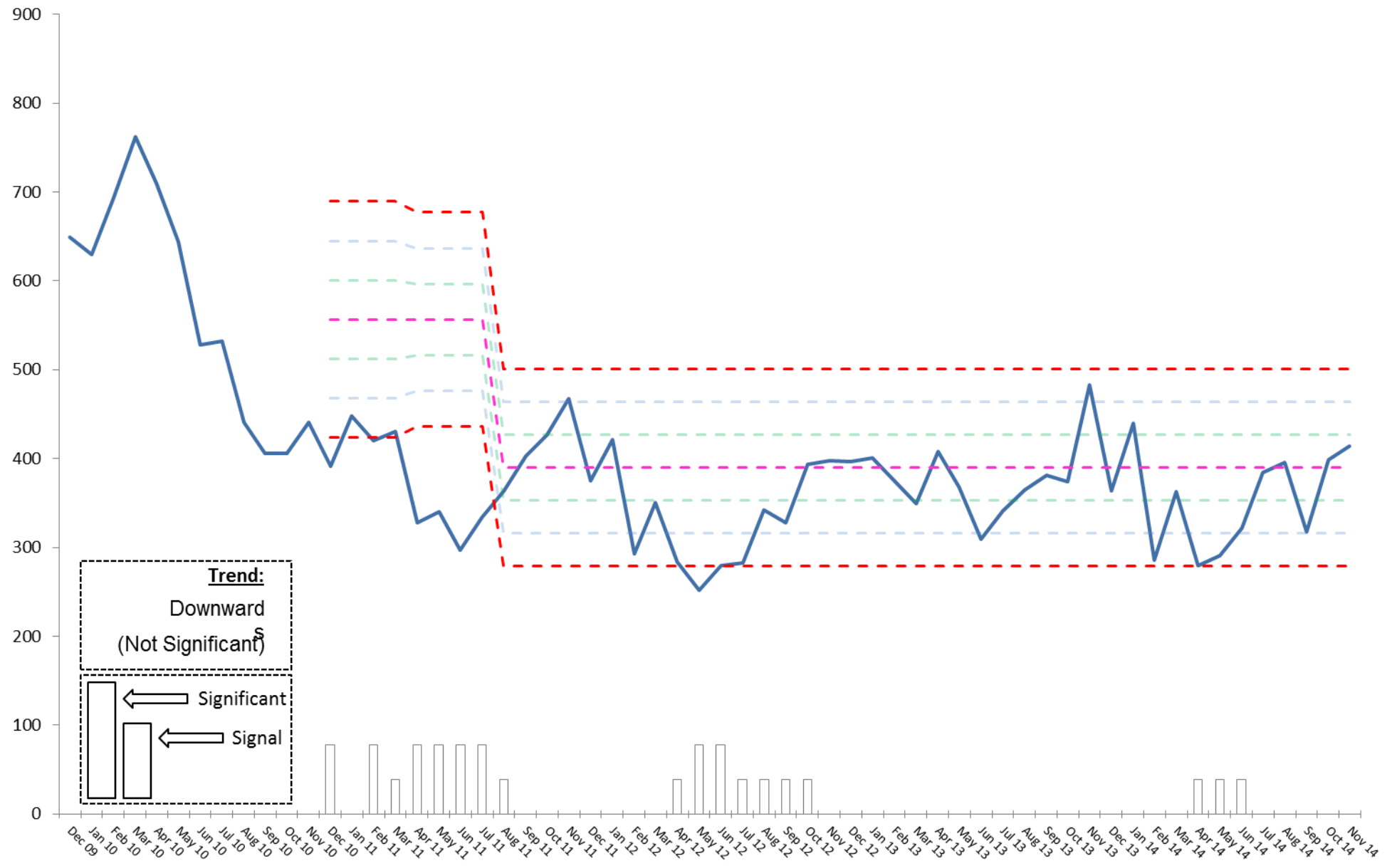
1.6 Reduction in 'All Crime' across the Force

| | Year-to-date performance | | | | Target Position | | | Month-to-date performance | | | |
|----------------------|--------------------------|---------------|---------------|-------------------|-----------------|------------------------|-----------------------------------|---------------------------|---------------|---------------|-------------------|
| | 2014/15 | 2013/14 | Volume Change | Percentage Change | Current Target | Difference from Target | Percentage Difference from Target | November 2014 | November 2013 | Volume Change | Percentage Change |
| Force | 49299 | 46,458 | 2841 | 6.12% | 46,457 | 2842 | 6.12% | 6381 | 5704 | 677 | 11.87% |
| City Division | 21534 | 20,434 | 1100 | 5.38% | 20,433 | 1101 | 5.39% | 2833 | 2523 | 310 | 12.29% |
| County Division | 27765 | 26,024 | 1741 | 6.69% | 26,023 | 1742 | 6.69% | 3548 | 3181 | 367 | 11.54% |
| County West | 9662 | 9,162 | 500 | 5.46% | 9,161 | 501 | 5.47% | 1277 | 1127 | 150 | 13.31% |
| Ashfield | 4556 | 4,695 | -139 | -2.96% | 4,694 | -138 | -2.94% | 565 | 591 | -26 | -4.40% |
| Mansfield | 5106 | 4,467 | 639 | 14.30% | 4,466 | 640 | 14.33% | 712 | 536 | 176 | 32.84% |
| County East | 9131 | 8,215 | 916 | 11.15% | 8,214 | 917 | 11.16% | 1159 | 1001 | 158 | 15.78% |
| Bassetlaw | 5161 | 4,746 | 415 | 8.74% | 4,745 | 416 | 8.77% | 624 | 572 | 52 | 9.09% |
| Newark & Sherwood | 3970 | 3,469 | 501 | 14.44% | 3,468 | 502 | 14.48% | 535 | 429 | 106 | 24.71% |
| County South | 8972 | 8,647 | 325 | 3.76% | 8,646 | 326 | 3.77% | 1112 | 1053 | 59 | 5.60% |
| Broxtowe | 3243 | 3,202 | 41 | 1.28% | 3,201 | 42 | 1.31% | 417 | 394 | 23 | 5.84% |
| Gedling | 3471 | 3,218 | 253 | 7.86% | 3,217 | 254 | 7.90% | 399 | 412 | -13 | -3.16% |
| Rushcliffe | 2258 | 2,227 | 31 | 1.39% | 2,226 | 32 | 1.44% | 296 | 247 | 49 | 19.84% |
| City Division | 21534 | 20,434 | 1100 | 5.38% | 20,433 | 1101 | 5.39% | 2833 | 2523 | 310 | 12.29% |
| City Central | 6076 | 5,582 | 494 | 8.85% | 5,581 | 495 | 8.87% | 811 | 671 | 140 | 20.86% |
| City Centre | 4768 | 5,000 | -232 | -4.64% | 4,999 | -231 | -4.62% | 663 | 650 | 13 | 2.00% |
| City North | 6086 | 5,829 | 257 | 4.41% | 5,828 | 258 | 4.43% | 759 | 662 | 97 | 14.65% |
| City South | 4604 | 4,023 | 581 | 14.44% | 4,022 | 582 | 14.47% | 600 | 540 | 60 | 11.11% |

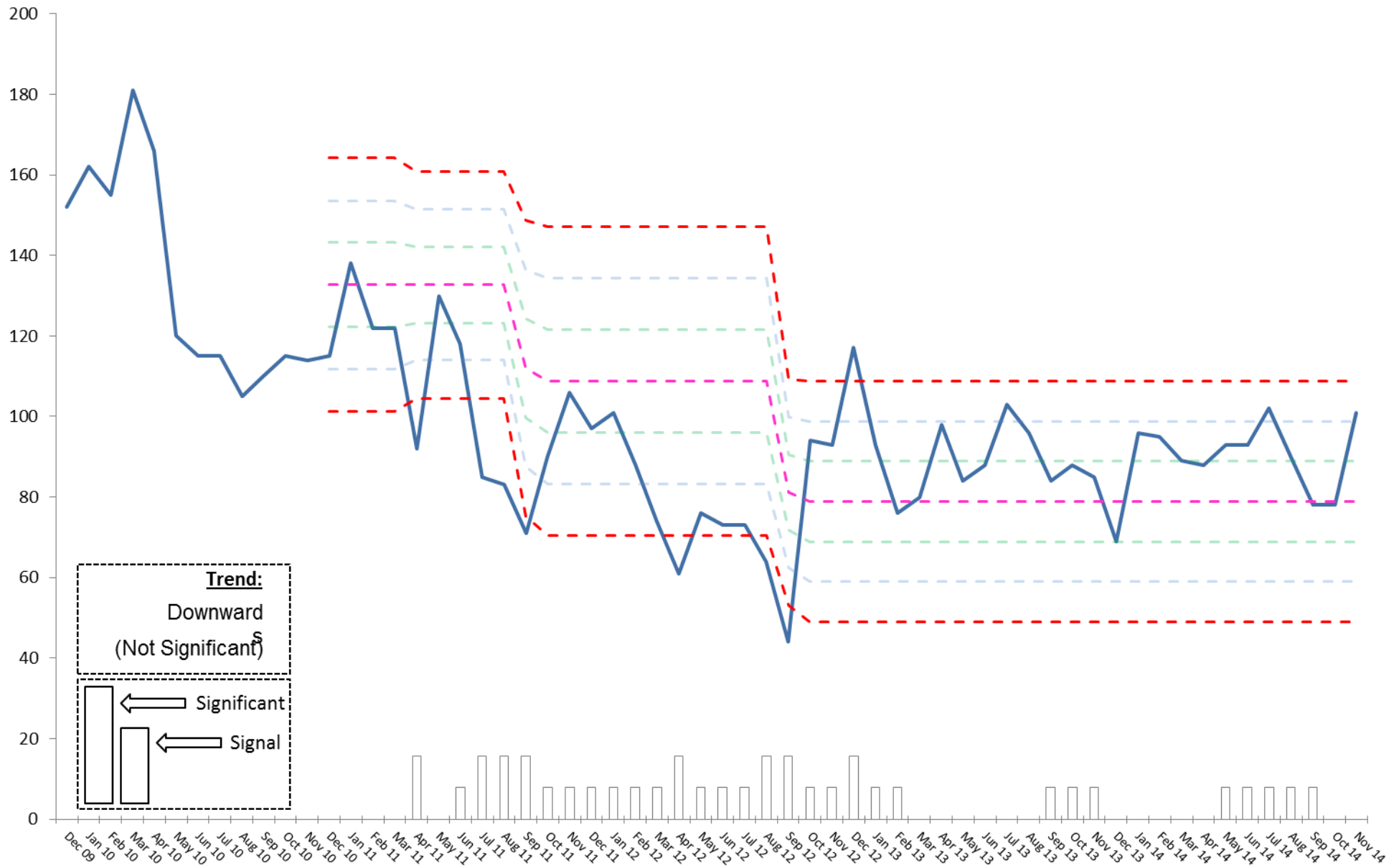
| | Year-to-date performance | | | | Target Position | | | Month-to-date performance | | | |
|--------------------------------------|--------------------------|---------------|---------------|-------------------|-----------------|------------------------|-----------------------------------|---------------------------|---------------|---------------|-------------------|
| | 2014/15 | 2013/14 | Volume Change | Percentage Change | Current Target | Difference from Target | Percentage Difference from Target | November 2014 | November 2013 | Volume Change | Percentage Change |
| All Crime | 49299 | 46,458 | 2841 | 6.12% | 46,457 | 2842 | 6.12% | 6381 | 5704 | 677 | 11.87% |
| Homicide | 6 | 10 | -4 | -40.00% | 9 | -3 | -33.33% | 1 | 3 | -2 | -66.67% |
| Violence with injury | 6444 | 5,479 | 965 | 17.61% | 5,478 | 966 | 17.63% | 838 | 620 | 218 | 35.16% |
| Violence without injury | 4619 | 3,568 | 1051 | 29.46% | 3,567 | 1052 | 29.49% | 539 | 421 | 118 | 28.03% |
| Rape | 423 | 260 | 163 | 62.69% | 259 | 164 | 63.32% | 60 | 23 | 37 | 160.87% |
| Other sexual offences | 776 | 475 | 301 | 63.37% | 474 | 302 | 63.71% | 96 | 56 | 40 | 71.43% |
| Robbery of business property | 69 | 70 | -1 | -1.43% | 69 | 0 | 0.00% | 15 | 8 | 7 | 87.50% |
| Robbery of personal property | 654 | 656 | -2 | -0.30% | 655 | -1 | -0.15% | 86 | 77 | 9 | 11.69% |
| Burglary dwelling | 2804 | 3,029 | -225 | -7.43% | 3,028 | -224 | -7.40% | 414 | 483 | -69 | -14.29% |
| Burglary other | 3142 | 3,047 | 95 | 3.12% | 3,046 | 96 | 3.15% | 379 | 417 | -38 | -9.11% |
| Theft of motor vehicle | 732 | 962 | -230 | -23.91% | 961 | -229 | -23.83% | 97 | 127 | -30 | -23.62% |
| Theft from motor vehicle | 3260 | 3,348 | -88 | -2.63% | 3,347 | -87 | -2.60% | 343 | 428 | -85 | -19.86% |
| Vehicle interference | 559 | 197 | 362 | 183.76% | 196 | 363 | 185.20% | 76 | 25 | 51 | 204.00% |
| Theft from person | 784 | 1,071 | -287 | -26.80% | 1,070 | -286 | -26.73% | 177 | 128 | 49 | 38.28% |
| Bicycle theft | 1632 | 1,576 | 56 | 3.55% | 1,575 | 57 | 3.62% | 187 | 177 | 10 | 5.65% |
| Shoplifting | 5205 | 5,140 | 65 | 1.26% | 5,139 | 66 | 1.28% | 722 | 645 | 77 | 11.94% |
| All other theft offences | 5965 | 6,225 | -260 | -4.18% | 6,224 | -259 | -4.16% | 785 | 710 | 75 | 10.56% |
| Criminal damage | 6727 | 6,556 | 171 | 2.61% | 6,555 | 172 | 2.62% | 881 | 763 | 118 | 15.47% |
| Arson | 312 | 289 | 23 | 7.96% | 288 | 24 | 8.33% | 37 | 38 | -1 | -2.63% |
| Victim-Based Crime | 44113 | 41,958 | 2155 | 5.14% | 41,957 | 2156 | 5.14% | 5733 | 5149 | 584 | 11.34% |
| Trafficking in drugs | 487 | 438 | 49 | 11.19% | 437 | 50 | 11.44% | 61 | 57 | 4 | 7.02% |
| Possession of drugs | 1903 | 1,968 | -65 | -3.30% | 1,967 | -64 | -3.25% | 252 | 240 | 12 | 5.00% |
| Possession of weapons offences | 382 | 380 | 2 | 0.53% | 379 | 3 | 0.79% | 47 | 52 | -5 | -9.62% |
| Public order offences | 1725 | 1,175 | 550 | 46.81% | 1,174 | 551 | 46.93% | 209 | 129 | 80 | 62.02% |
| Miscellaneous crimes against society | 688 | 539 | 149 | 27.64% | 538 | 150 | 27.88% | 78 | 77 | 1 | 1.30% |
| Other crimes against society | 5185 | 4,500 | 685 | 15.22% | 4,499 | 686 | 15.25% | 647 | 555 | 92 | 16.58% |

| Priority Area | Year-to-Date Performance | | | | Month-to-Date Performance | | | |
|-------------------------------|--------------------------|--------------|-------------------|-----------------------|---------------------------|---------------|-------------------|-----------------------|
| | 2014/15 | 2013/14 | Volume Difference | Percentage Difference | November 2014 | November 2013 | Volume Difference | Percentage Difference |
| Nottingham City | | | | | | | | |
| Arboretum | 1,115 | 995 | 120 | 12% | 155 | 130 | 25 | 19% |
| Aspley | 1,031 | 1,065 | -34 | -3% | 142 | 97 | 45 | 46% |
| Bridge | 751 | 575 | 176 | 31% | 73 | 74 | -1 | -1% |
| Bulwell | 1,319 | 1,306 | 13 | 1% | 188 | 173 | 15 | 9% |
| St Ann's | 909 | 854 | 55 | 6% | 117 | 110 | 7 | 6% |
| Total | 5,125 | 4,795 | 330 | 7% | 675 | 584 | 91 | 16% |
| Nottinghamshire County | | | | | | | | |
| Carr Bank | 210 | 220 | -10 | -5% | 21 | 26 | -5 | -19% |
| Oak Tree | 222 | 219 | 3 | 1% | 28 | 29 | -1 | -3% |
| Portland | 754 | 585 | 169 | 29% | 94 | 59 | 35 | 59% |
| Woodlands | 681 | 559 | 122 | 22% | 133 | 85 | 48 | 56% |
| Hucknall East | 394 | 449 | -55 | -12% | 52 | 64 | -12 | -19% |
| Kirkby East | 446 | 400 | 46 | 12% | 62 | 53 | 9 | 17% |
| Sutton Central | 536 | 496 | 40 | 8% | 69 | 60 | 9 | 15% |
| Sutton East | 238 | 278 | -40 | -14% | 18 | 30 | -12 | -40% |
| Sutton In Ashfield North | 421 | 494 | -73 | -15% | 59 | 56 | 3 | 5% |
| Bridge (Newark) | 325 | 348 | -23 | -7% | 45 | 39 | 6 | 15% |
| Castle | 715 | 561 | 154 | 27% | 92 | 60 | 32 | 53% |
| Worksop North West | 580 | 513 | 67 | 13% | 53 | 62 | -9 | -15% |
| Worksop South | 437 | 490 | -53 | -11% | 53 | 71 | -18 | -25% |
| Eastwood South | 533 | 507 | 26 | 5% | 82 | 54 | 28 | 52% |
| Netherfield And Colwick | 388 | 394 | -6 | -2% | 35 | 59 | -24 | -41% |
| Total | 6,880 | 6,513 | 367 | 6% | 896 | 807 | 89 | 11% |
| Discretionary Areas | | | | | | | | |
| Ladybrook | 171 | 200 | -29 | -15% | 20 | 22 | -2 | -9% |
| Worksop South East | 860 | 755 | 105 | 14% | 92 | 75 | 17 | 23% |
| Trent Bridge | 272 | 300 | -28 | -9% | 30 | 37 | -7 | -19% |
| Total | 1,303 | 1,255 | 48 | 4% | 142 | 134 | 8 | 6% |

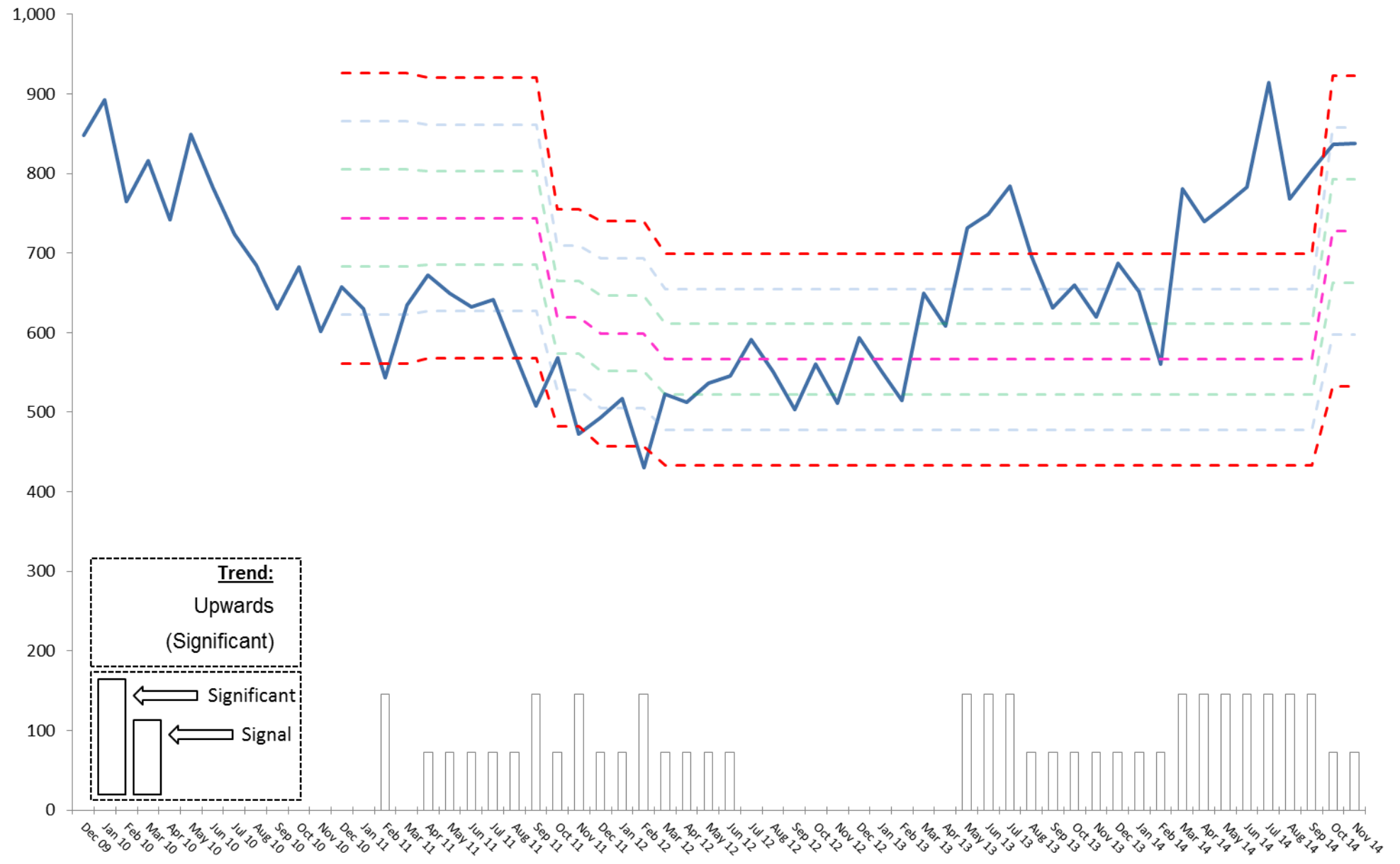
1.6 Burglary Dwelling performance over-time



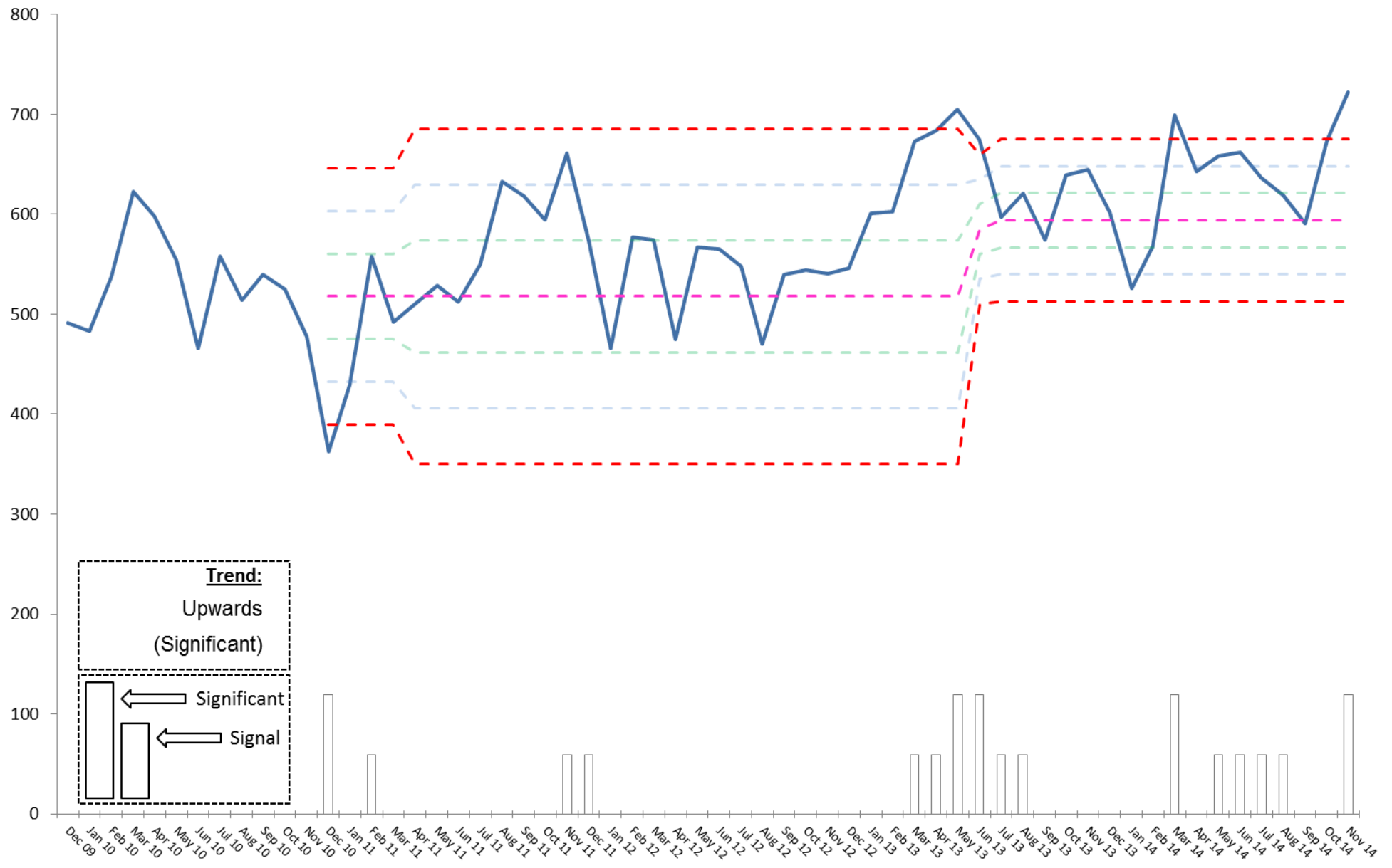
1.6 Robbery performance over-time



1.6 Violence with Injury performance over-time



1.6 Shop Theft performance over-time



1.7 Reduction in Anti-Social Behaviour (ASB) incidents across the Force

| | Year-to-date performance | | | | Target Position | | | Month-to-date performance | | | |
|----------------------|--------------------------|---------------|---------------|-------------------|-----------------|------------------------|-----------------------------------|---------------------------|---------------|---------------|-------------------|
| | 2014/15 | 2013/14 | Volume Change | Percentage Change | Current Target | Difference from Target | Percentage Difference from Target | November 2014 | November 2013 | Volume Change | Percentage Change |
| Force | 27,732 | 25,287 | 2,445 | 9.67% | 23,264 | 4467.96 | 16.11% | 2953 | 2600 | 353 | 13.58% |
| City Division | 13,251 | 11,051 | 2,200 | 19.91% | 10,167 | 3084.08 | 23.27% | 1477 | 1195 | 282 | 23.60% |
| County Division | 14,481 | 14,236 | 245 | 1.72% | 13,097 | 1383.88 | 9.56% | 1476 | 1405 | 71 | 5.05% |
| County West | 5,456 | 5,410 | 46 | 0.85% | 4,977 | 478.8 | 8.78% | 538 | 571 | -33 | -5.78% |
| Ashfield | 2,759 | 2,722 | 37 | 1.36% | 2,504 | 254.76 | 9.23% | 284 | 282 | 2 | 0.71% |
| Mansfield | 2,697 | 2,688 | 9 | 0.33% | 2,473 | 224.04 | 8.31% | 254 | 289 | -35 | -12.11% |
| County East | 4,472 | 4,561 | -89 | -1.95% | 4,196 | 275.88 | 6.17% | 478 | 453 | 25 | 5.52% |
| Bassetlaw | 2,353 | 2,517 | -164 | -6.52% | 2,316 | 37.36 | 1.59% | 258 | 264 | -6 | -2.27% |
| Newark & Sherwood | 2,119 | 2,044 | 75 | 3.67% | 1,880 | 238.52 | 11.26% | 220 | 189 | 31 | 16.40% |
| County South | 4,553 | 4,265 | 288 | 6.75% | 3,924 | 629.2 | 13.82% | 460 | 381 | 79 | 20.73% |
| Broxtowe | 1,701 | 1,625 | 76 | 4.68% | 1,495 | 206 | 12.11% | 175 | 138 | 37 | 26.81% |
| Gedling | 1,741 | 1,557 | 184 | 11.82% | 1,432 | 308.56 | 17.72% | 174 | 142 | 32 | 22.54% |
| Rushcliffe | 1,111 | 1,083 | 28 | 2.59% | 996 | 114.64 | 10.32% | 111 | 101 | 10 | 9.90% |
| City Division | 13,251 | 11,051 | 2,200 | 19.91% | 10,167 | 3084.08 | 23.27% | 1477 | 1195 | 282 | 23.60% |
| City Central | 3,703 | 3,096 | 607 | 19.61% | 2,848 | 854.68 | 23.08% | 441 | 334 | 107 | 32.04% |
| City Centre | 1,872 | 1,581 | 291 | 18.41% | 1,455 | 417.48 | 22.30% | 269 | 231 | 38 | 16.45% |
| City North | 4,199 | 3,574 | 625 | 17.49% | 3,288 | 910.92 | 21.69% | 390 | 346 | 44 | 12.72% |
| City South | 3,477 | 2,800 | 677 | 24.18% | 2,576 | 901 | 25.91% | 377 | 284 | 93 | 32.75% |

| | Year-to-date performance | | | | Target Position | | | Month-to-date performance | | | |
|-------------------|--------------------------|---------|---------------|-------------------|-----------------|------------------------|-----------------------------------|---------------------------|---------------|---------------|-------------------|
| | 2014/15 | 2013/14 | Volume Change | Percentage Change | Current Target | Difference from Target | Percentage Difference from Target | November 2014 | November 2013 | Volume Change | Percentage Change |
| ASB Environmental | 2,144 | 2,086 | 58 | 2.78% | 1,919 | 224.88 | 10.49% | 209 | 185 | 24 | 12.97% |
| ASB Nuisance | 20,901 | 18,541 | 2,360 | 12.73% | 17,058 | 3843.28 | 18.39% | 2248 | 1925 | 323 | 16.78% |
| ASB Personal | 4,687 | 4,660 | 27 | 0.58% | 4,287 | 399.8 | 8.53% | 496 | 490 | 6 | 1.22% |

1.8 An increase in the detection rate for Victim-Based Crime

| | Year-to-date performance | | | Target Position | | Month-to-date performance | | |
|----------------------|--------------------------|---------------|---------------|-----------------|-----------------------------------|---------------------------|---------------|----------------|
| | 2014/15 | 2013/14 | Change | Current Target | Percentage Difference from Target | November 2014 | November 2013 | Change |
| Force | 24.58% | 27.45% | -2.88% | 27.46% | -2.89% | 19.83% | 28.32% | -8.48% |
| City Division | 23.13% | 27.22% | -4.08% | 27.23% | -4.09% | 18.25% | 26.94% | -8.68% |
| County Division | 25.66% | 27.63% | -1.97% | 27.64% | -1.98% | 21.05% | 29.38% | -8.32% |
| County West | 27.88% | 28.37% | -0.48% | 28.38% | -0.49% | 24.87% | 31.19% | -6.32% |
| Ashfield | 23.21% | 23.82% | -0.62% | 23.83% | -0.63% | 16.18% | 27.52% | -11.33% |
| Mansfield | 32.22% | 33.36% | -1.13% | 33.37% | -1.14% | 32.29% | 35.53% | -3.24% |
| County East | 25.70% | 28.74% | -3.04% | 28.75% | -3.05% | 19.02% | 31.42% | -12.40% |
| Bassetlaw | 25.47% | 26.99% | -1.52% | 27.00% | -1.53% | 21.58% | 28.73% | -7.16% |
| Newark & Sherwood | 26.01% | 31.17% | -5.16% | 31.18% | -5.17% | 15.99% | 35.14% | -19.15% |
| County South | 23.28% | 25.78% | -2.50% | 25.79% | -2.51% | 19.01% | 25.49% | -6.48% |
| Broxtowe | 22.71% | 23.37% | -0.66% | 23.38% | -0.67% | 15.48% | 27.93% | -12.45% |
| Gedling | 25.49% | 30.56% | -5.07% | 30.57% | -5.08% | 24.17% | 24.27% | -0.10% |
| Rushcliffe | 20.76% | 22.46% | -1.70% | 22.47% | -1.71% | 17.33% | 23.71% | -6.38% |
| City Division | 23.13% | 27.22% | -4.08% | 27.23% | -4.09% | 18.25% | 26.94% | -8.68% |
| City Central | 18.79% | 23.14% | -4.35% | 23.15% | -4.36% | 15.24% | 22.73% | -7.48% |
| City Centre | 31.19% | 32.74% | -1.55% | 32.75% | -1.56% | 22.42% | 30.65% | -8.23% |
| City North | 23.03% | 26.52% | -3.49% | 26.53% | -3.50% | 20.92% | 27.36% | -6.44% |
| City South | 20.83% | 27.00% | -6.17% | 27.01% | -6.18% | 14.18% | 27.20% | -13.02% |

| | Year-to-date performance | | | Target Position | | Month-to-date performance | | |
|------------------------------|--------------------------|---------------|-------------------|-----------------|-----------------------------------|---------------------------|---------------|---------------|
| | 2014/15 | 2013/14 | Percentage Change | Current Target | Percentage Difference from Target | November 2014 | November 2013 | Change |
| Homicide | 50.00% | 70.00% | -20.00% | 70.01% | -20.01% | | 33.33% | -33.33% |
| Violence with injury | 42.83% | 49.74% | -6.90% | 49.75% | -6.91% | 34.61% | 55.81% | -21.20% |
| Violence without injury | 40.05% | 54.93% | -14.88% | 54.94% | -14.89% | 32.10% | 55.34% | -23.25% |
| Rape | 10.87% | 18.08% | -7.20% | 18.09% | -7.21% | 5.00% | 34.78% | -29.78% |
| Other sexual offences | 20.10% | 28.42% | -8.32% | 28.43% | -8.33% | 12.50% | 28.57% | -16.07% |
| Robbery of business property | 36.23% | 22.86% | 13.37% | 22.87% | 13.36% | 46.67% | | 46.67% |
| Robbery of personal property | 24.01% | 24.09% | -0.08% | 24.10% | -0.09% | 17.44% | 23.38% | -5.93% |
| Burglary dwelling | 11.16% | 13.40% | -2.24% | 13.41% | -2.25% | 10.14% | 13.87% | -3.73% |
| Burglary other | 6.49% | 7.98% | -1.48% | 7.99% | -1.49% | 1.85% | 10.55% | -8.70% |
| Theft of motor vehicle | 17.90% | 19.75% | -1.85% | 19.76% | -1.86% | 14.43% | 27.56% | -13.13% |
| Theft from motor vehicle | 5.89% | 6.18% | -0.29% | 6.19% | -0.30% | 10.20% | 5.84% | 4.36% |
| Vehicle interference | 6.26% | 5.08% | 1.19% | 5.09% | 1.18% | 3.95% | | 3.95% |
| Theft from person | 4.97% | 4.39% | 0.59% | 4.40% | 0.58% | 2.82% | 3.13% | -0.30% |
| Bicycle theft | 5.88% | 6.28% | -0.40% | 6.29% | -0.41% | 4.81% | 6.78% | -1.97% |
| Shoplifting | 55.81% | 58.77% | -2.96% | 58.78% | -2.97% | 44.04% | 60.00% | -15.96% |
| All other theft offences | 9.99% | 12.67% | -2.68% | 12.68% | -2.69% | 7.01% | 14.93% | -7.92% |
| Criminal damage | 19.33% | 21.71% | -2.38% | 21.72% | -2.39% | 16.69% | 19.92% | -3.24% |
| Arson | 10.58% | 12.46% | -1.88% | 12.47% | -1.89% | 5.41% | 10.53% | -5.12% |
| Victim-Based Crime | 24.58% | 27.45% | -2.88% | 27.46% | -2.89% | 19.83% | 28.32% | -8.48% |

1.8 Use of Community Resolutions

| | 2014/15 | % Prop of total | 2013/14 | % Prop of total |
|-----------------------------|----------------|------------------------|----------------|------------------------|
| Cautions | 1697 | 11.81% | 3273 | 21.35% |
| Charge / Summons | 9248 | 64.38% | 8008 | 52.24% |
| Community Resolution | 2488 | 17.32% | 2661 | 17.36% |
| Other | 606 | 4.22% | 849 | 5.54% |
| Penalty Notice for Crime | 140 | 0.97% | 141 | 0.92% |
| TIC not previously recorded | 7 | 0.05% | 24 | 0.16% |
| TIC previously recorded | 177 | 1.23% | 372 | 2.43% |
| Total | 14364 | 100.00% | 15328 | 100.00% |

1.8 Breakdown of Outcome Codes

| | Year-to-date performance |
|-------------------------------------------------------------------------------|---------------------------------|
| | 2014/15 |
| 01. Charged/Summons | 9248 |
| 02. Caution - Youths | 248 |
| 03. Caution - Adults | 1450 |
| 04. Taken Into Consideration | 184 |
| 05. Offender Has Died | 8 |
| 06. Penalty Notices For Disorder | 140 |
| 07. Cannabis Warning | 598 |
| 08. Community Resolution | 2488 |
| 09. Prosecution Not In The Public Interest (CPS) | 625 |
| 10. Action Not In The Public Interest (Police) | 1198 |
| 11. Named Suspect below the age of criminal responsibility | 56 |
| 12. Named suspect too ill (physical or mental health) to prosecute | 105 |
| 13. Named suspect but victim/key witness is dead or too ill | 26 |
| 14. Victim declines/unable to ID suspect | 703 |
| 15. Victim supports but evidential difficulties prevent further action | 3350 |
| 16. Victim does not support/withdraws support | 3436 |
| 17. Prosecution time limit expired | 49 |
| 18. Investigation Complete: No suspect identified | 24600 |
| Total | 48512 |

1.9 The number of alcohol-related crimes

| | Year-to-date performance | | | | Month-to-date performance | | | |
|-----------------------------|--------------------------|---------|---------------|-------------------|---------------------------|--------------|---------------|-------------------|
| | 2014/15 | 2013/14 | Volume Change | Percentage Change | October 2014 | October 2013 | Volume Change | Percentage Change |
| All Crime | 49,299 | 46,458 | 2,841 | 6.1% | 6,539 | 5,554 | 985 | 17.7% |
| Alcohol-related | 6,676 | 6,398 | 278 | 4.3% | 853 | 756 | 97 | 12.8% |
| % Alcohol-related | 13.5% | 13.8% | | -0.3% | 13.0% | 13.6% | | -0.6% |
| | | | | | | | | |
| Victim-Based Crime | 44,113 | 41,958 | 2,155 | 5.1% | 5,896 | 5,067 | 829 | 16.4% |
| Alcohol-related | 5,914 | 5,680 | 234 | 4.1% | 768 | 679 | 89 | 13.1% |
| % Alcohol-related | 13.4% | 13.5% | | -0.1% | 13.0% | 13.4% | | -0.4% |
| | | | | | | | | |
| Violence Against the Person | 11,069 | 9,057 | 2,012 | 22.2% | 1,442 | 1,103 | 339 | 30.7% |
| Alcohol-related | 2,705 | 2,315 | 390 | 16.8% | 341 | 260 | 81 | 31.2% |
| % Alcohol-related | 24.4% | 25.6% | | -1.2% | 23.6% | 23.6% | | 0.0% |
| | | | | | | | | |
| Anti-Social Behaviour | 27,732 | 25,287 | 2,445 | 9.7% | 3,197 | 2,955 | 242 | 8.2% |
| Alcohol-related | 3,791 | 3,328 | 463 | 13.9% | 421 | 395 | 26 | 6.6% |
| % Alcohol-related | 13.7% | 13.2% | | 0.5% | 13.2% | 13.4% | | -0.2% |

1.11 To monitor the number of production and supply of drugs

| | Year-to-date performance | | | | Taret Position | | | Month-to-date performance | | | |
|------------|--------------------------|---------|---------------|-------------------|----------------|------------------------|-----------------------------------|---------------------------|---------------|---------------|-------------------|
| | 2014/15 | 2013/14 | Volume Change | Percentage Change | Current Target | Difference from Target | Percentage Difference from Target | November 2014 | November 2013 | Volume Change | Percentage Change |
| Possession | 1903 | 1,968 | -65 | -3.30% | 1,967 | -64 | -3.25% | 252 | 240 | 12 | 5.00% |
| Production | 233 | 270 | -37 | -13.70% | 269 | -36 | -13.38% | 19 | 28 | -9 | -32.14% |
| Supply | 254 | 168 | 86 | 51.19% | 167 | 87 | 52.10% | 42 | 29 | 13 | 44.83% |
| Sum: | 2390 | 2,406 | -16 | -0.67% | 2,403 | -13 | -0.62% | 313 | 297 | 16 | 5.39% |

3.4 Percentage reduction of people that have been a repeat victim within the previous 12 months

| Domestic Violence | | Year-to-date performance | | |
|---------------------|---------|--------------------------|---------------|-------------------|
| Repeat Victims | 2014/15 | 2013/14 | Volume Change | Percentage Change |
| City | 554 | 542 | 12 | 2.2% |
| County | 760 | 753 | 7 | 0.9% |
| Force | 1,314 | 1,295 | 19 | 1.5% |
| | | | | |
| | | | | |
| | | | | |
| | | | | |
| Hate Crime | | Year-to-date performance | | |
| Repeat Victims | 2014/15 | 2013/14 | Volume Change | Percentage Change |
| City | 25 | 21 | 4 | 19.0% |
| County | 25 | 18 | 7 | 38.9% |
| Force | 50 | 39 | 11 | 28.2% |
| | | | | |
| | | | | |
| | | | | |
| | | | | |
| Total Repeat Volume | | Year-to-date performance | | |
| | 2014/15 | 2013/14 | Volume Change | Percentage Change |
| City | 579 | 563 | 16 | 2.8% |
| County | 785 | 771 | 14 | 1.8% |
| Force | 1,364 | 1,334 | 30 | 2.2% |
| | | | | |
| | | | | |
| | | | | |
| | | | | |
| | | | | |
| Domestic Violence | | Year-to-date performance | | |
| | 2014/15 | 2013/14 | Volume Change | Percentage Change |
| City Central | 144 | 127 | 17 | 13.4% |
| City Centre | 12 | 7 | 5 | 71.4% |
| City North | 253 | 245 | 8 | 3.3% |
| City South | 144 | 163 | -19 | -11.7% |
| | | | | |
| | | | | |
| | | | | |
| | | | | |
| | | | | |
| Domestic Violence | | Year-to-date performance | | |
| | 2014/15 | 2013/14 | Volume Change | Percentage Change |
| Ashfield | 138 | 152 | -14 | -9.2% |
| Bassetlaw | 119 | 91 | 28 | 30.8% |
| Broxtowe | 94 | 80 | 14 | 17.5% |
| Gedling | 112 | 117 | -5 | -4.3% |
| Mansfield | 150 | 156 | -6 | -3.8% |
| Newark & Sherwood | 109 | 109 | 0 | 0.0% |
| Rushcliffe | 38 | 48 | -10 | -20.8% |

| 2013/14 | | | | 2014/15 | | |
|--------------------------------------------------------------------------------------|--------------------------------------------|------------------------------------------------------------|--------------------------|--------------------------------------------|------------------------------------------------------------|-------|
| Domestic Violence Crimes | Domestic Violence crimes which are repeats | % Proportion of Domestic Violence crimes which are repeats | Domestic Violence Crimes | Domestic Violence crimes which are repeats | % Proportion of Domestic Violence crimes which are repeats | |
| City | 1,708 | 651 | 38.1% | 1,680 | 675 | 40.2% |
| County | 2,239 | 883 | 39.4% | 2,560 | 943 | 36.8% |
| Force | 3,947 | 1,534 | 38.9% | 4,240 | 1,618 | 38.2% |
| * Includes domestic abuse incidents to determine repeat victimisation | | | | | | |
| | | | | | | |
| | | | | | | |
| | | | | | | |
| | | | | | | |
| 2013/14 | | | | 2014/15 | | |
| Domestic Violence Crimes | Domestic Violence crimes which are repeats | % Proportion of Domestic Violence crimes which are repeats | Domestic Violence Crimes | Domestic Violence crimes which are repeats | % Proportion of Domestic Violence crimes which are repeats | |
| City | 1,708 | 329 | 19.3% | 1,680 | 347 | 20.7% |
| County | 2,239 | 412 | 18.4% | 2,560 | 522 | 20.4% |
| Force | 3,947 | 741 | 18.8% | 4,240 | 869 | 20.5% |
| * Only includes notifiable domestic abuse offences to determine repeat victimisation | | | | | | |
| | | | | | | |
| | | | | | | |
| | | | | | | |
| | | | | | | |
| | | | | | | |
| Anti-Social Behaviour | | | | Year-to-date performance | | |
| | 2014/15 | 2013/14 | Volume Change | Percentage Change | | |
| City | 2,492 | 2,050 | 442 | 21.6% | | |
| County | 2,532 | 2,523 | 9 | 0.4% | | |
| Force | 5,024 | 4,573 | 451 | 9.9% | | |
| | | | | | | |
| | | | | | | |
| | | | | | | |
| | | | | | | |
| | | | | | | |
| Anti-Social Behaviour | | | | Year-to-date performance | | |
| | 2014/15 | 2013/14 | Volume Change | Percentage Change | | |
| City | 2,492 | 2,050 | 442 | 21.6% | | |
| City Central | 700 | 594 | 106 | 17.8% | | |
| City Centre | 349 | 256 | 93 | 36.3% | | |
| City North | 787 | 663 | 124 | 18.7% | | |
| City South | 656 | 537 | 119 | 22.2% | | |
| County | 2,531 | 2,522 | 9 | 0.4% | | |
| Ashfield | 506 | 506 | 0 | 0.0% | | |
| Bassetlaw | 405 | 415 | -10 | -2.4% | | |
| Broxtowe | 284 | 303 | -19 | -6.3% | | |
| Gedling | 273 | 255 | 18 | 7.1% | | |
| Mansfield | 520 | 517 | 3 | 0.6% | | |
| Newark & She | 352 | 356 | -4 | -1.1% | | |

3.5 Public confidence in reporting offences to the police

To monitor the number of Serious Sexual Offences

| Area | Offence Type | Year-to-Date Performance | | | | Month-to-Date Performance | | | |
|-------|-------------------------------|--------------------------|---------|------------|------------|---------------------------|---------------|------------|------------|
| | | 2014/15 | 2013/14 | Volume | Percentage | November 2014 | November 2013 | Volume | Percentage |
| | | | | Difference | Difference | | | Difference | Difference |
| Force | Rape | 422 | 260 | 162 | 62% | 61 | 23 | 38 | 165% |
| | Other Sexual Offences | 529 | 331 | 198 | 60% | 71 | 40 | 31 | 78% |
| | Serious Sexual Offences Total | 951 | 591 | 360 | 61% | 132 | 63 | 69 | 110% |

| Area | Offence Type | Year-to-Date Performance | | | | Month-to-Date Performance | | | |
|------------------------|-------------------------------|--------------------------|---------|------------|------------|---------------------------|---------------|------------|------------|
| | | 2014/15 | 2013/14 | Volume | Percentage | November 2014 | November 2013 | Volume | Percentage |
| | | | | Difference | Difference | | | Difference | Difference |
| Nottingham City | Rape | 198 | 112 | 86 | 77% | 31 | 11 | 20 | 182% |
| | Other Sexual Offences | 242 | 141 | 101 | 72% | 42 | 17 | 25 | 147% |
| | Serious Sexual Offences Total | 440 | 253 | 187 | 74% | 73 | 28 | 45 | 161% |
| Nottinghamshire County | Rape | 224 | 148 | 76 | 51% | 30 | 12 | 18 | 150% |
| | Other Sexual Offences | 287 | 190 | 97 | 51% | 29 | 23 | 6 | 26% |
| | Serious Sexual Offences Total | 511 | 338 | 173 | 51% | 59 | 35 | 24 | 69% |

| Area | Offence Type | Year-to-Date Performance | | | | Month-to-Date Performance | | | |
|-------------------|-------------------------------|--------------------------|---------|------------|------------|---------------------------|---------------|------------|------------|
| | | 2014/15 | 2013/14 | Volume | Percentage | November 2014 | November 2013 | Volume | Percentage |
| | | | | Difference | Difference | | | Difference | Difference |
| Ashfield | Rape | 45 | 21 | 24 | 114% | 5 | 2 | 3 | 150% |
| | Other Sexual Offences | 46 | 32 | 14 | 44% | 4 | 4 | 0 | 0% |
| | Serious Sexual Offences Total | 91 | 53 | 38 | 72% | 9 | 6 | 3 | 50% |
| Bassetlaw | Rape | 41 | 18 | 23 | 128% | 7 | 1 | 6 | 600% |
| | Other Sexual Offences | 45 | 26 | 19 | 73% | 3 | 3 | 0 | 0% |
| | Serious Sexual Offences Total | 86 | 44 | 42 | 95% | 10 | 4 | 6 | 150% |
| Broxtowe | Rape | 31 | 24 | 7 | 29% | 4 | 2 | 2 | 100% |
| | Other Sexual Offences | 30 | 21 | 9 | 43% | 2 | 0 | 2 | #DIV/0 |
| | Serious Sexual Offences Total | 61 | 45 | 16 | 36% | 6 | 2 | 4 | 200% |
| City | Rape | 198 | 112 | 86 | 77% | 31 | 11 | 20 | 182% |
| | Other Sexual Offences | 242 | 141 | 101 | 72% | 42 | 17 | 25 | 147% |
| | Serious Sexual Offences Total | 440 | 253 | 187 | 74% | 73 | 28 | 45 | 161% |
| Gedling | Rape | 30 | 15 | 15 | 100% | 5 | 3 | 2 | 67% |
| | Other Sexual Offences | 40 | 28 | 12 | 43% | 5 | 6 | -1 | -17% |
| | Serious Sexual Offences Total | 70 | 43 | 27 | 63% | 10 | 9 | 1 | 11% |
| Mansfield | Rape | 42 | 34 | 8 | 24% | 3 | 0 | 3 | #DIV/0 |
| | Other Sexual Offences | 66 | 35 | 31 | 89% | 10 | 5 | 5 | 100% |
| | Serious Sexual Offences Total | 108 | 69 | 39 | 57% | 13 | 5 | 8 | 160% |
| Newark & Sherwood | Rape | 18 | 22 | -4 | -18% | 1 | 2 | -1 | -50% |
| | Other Sexual Offences | 40 | 38 | 2 | 5% | 2 | 3 | -1 | -33% |
| | Serious Sexual Offences Total | 58 | 60 | -2 | -3% | 3 | 5 | -2 | -40% |
| Rushcliffe | Rape | 17 | 14 | 3 | 21% | 5 | 2 | 3 | 150% |
| | Other Sexual Offences | 20 | 10 | 10 | 100% | 3 | 2 | 1 | 50% |
| | Serious Sexual Offences Total | 37 | 24 | 13 | 54% | 8 | 4 | 4 | 100% |

To monitor the number of Domestic Violence incidents and crimes

| Area | Offence Type | Year-to-Date Performance | | | | Month-to-Date Performance | | | |
|--------------|----------------------|--------------------------|---------|------------|------------|---------------------------|---------------|------------|------------|
| | | 2014/15 | 2013/14 | Volume | Percentage | November 2014 | November 2013 | Volume | Percentage |
| | | | | Difference | Difference | | | Difference | Difference |
| Force | Domestic Crimes | 4234 | 3940 | 294 | 7% | 544 | 488 | 56 | 11% |
| | Domestic Incidents | 8865 | 10740 | -1875 | -17% | 1231 | 1081 | 150 | 14% |
| | Domestic Abuse Total | 13099 | 14680 | -1581 | -11% | 1775 | 1569 | 206 | 13% |

| Area | Offence Type | Year-to-Date Performance | | | | Month-to-Date Performance | | | |
|------------------------|----------------------|--------------------------|---------|------------|------------|---------------------------|---------------|------------|------------|
| | | 2014/15 | 2013/14 | Volume | Percentage | November 2014 | November 2013 | Volume | Percentage |
| | | | | Difference | Difference | | | Difference | Difference |
| Nottingham City | Domestic Crimes | 1715 | 1742 | -27 | -2% | 233 | 203 | 30 | 15% |
| | Domestic Incidents | 3703 | 4403 | -700 | -16% | 509 | 481 | 28 | 6% |
| | Domestic Abuse Total | 5418 | 6145 | -727 | -12% | 742 | 684 | 58 | 8% |

| | | | | | | | | | |
|-------------------------------|----------------------|------|------|-------|------|------|-----|-----|-----|
| Nottinghamshire County | Domestic Crimes | 2519 | 2198 | 321 | 15% | 311 | 285 | 26 | 9% |
| | Domestic Incidents | 5162 | 6337 | -1175 | -19% | 722 | 600 | 122 | 20% |
| | Domestic Abuse Total | 7681 | 8535 | -854 | -10% | 1033 | 885 | 148 | 17% |

| Area | Offence Type | Year-to-Date Performance | | | | Month-to-Date Performance | | | |
|-----------------|----------------------|--------------------------|---------|------------|------------|---------------------------|---------------|------------|------------|
| | | 2014/15 | 2013/14 | Volume | Percentage | November 2014 | November 2013 | Volume | Percentage |
| | | | | Difference | Difference | | | Difference | Difference |
| Ashfield | Domestic Crimes | 425 | 401 | 24 | 6% | 63 | 59 | 4 | 7% |
| | Domestic Incidents | 1045 | 1295 | -250 | -19% | 156 | 121 | 35 | 29% |
| | Domestic Abuse Total | 1470 | 1696 | -226 | -13% | 219 | 180 | 39 | 22% |

| | | | | | | | | | |
|------------------|----------------------|------|------|------|------|-----|-----|----|-----|
| Bassetlaw | Domestic Crimes | 402 | 289 | 113 | 39% | 52 | 30 | 22 | 73% |
| | Domestic Incidents | 819 | 1013 | -194 | -19% | 111 | 88 | 23 | 26% |
| | Domestic Abuse Total | 1221 | 1302 | -81 | -6% | 163 | 118 | 45 | 38% |

| | | | | | | | | | |
|-----------------|----------------------|-----|-----|------|------|-----|-----|---|----|
| Broxtowe | Domestic Crimes | 291 | 245 | 46 | 19% | 34 | 33 | 1 | 3% |
| | Domestic Incidents | 578 | 720 | -142 | -20% | 73 | 71 | 2 | 3% |
| | Domestic Abuse Total | 869 | 965 | -96 | -10% | 107 | 104 | 3 | 3% |

| | | | | | | | | | |
|-------------|----------------------|------|------|------|------|-----|-----|----|-----|
| City | Domestic Crimes | 1715 | 1742 | -27 | -2% | 233 | 203 | 30 | 15% |
| | Domestic Incidents | 3703 | 4403 | -700 | -16% | 509 | 481 | 28 | 6% |
| | Domestic Abuse Total | 5418 | 6145 | -727 | -12% | 742 | 684 | 58 | 8% |

| | | | | | | | | | |
|----------------|----------------------|------|------|------|------|-----|-----|----|------|
| Gedling | Domestic Crimes | 354 | 334 | 20 | 6% | 33 | 38 | -5 | -13% |
| | Domestic Incidents | 658 | 870 | -212 | -24% | 88 | 79 | 9 | 11% |
| | Domestic Abuse Total | 1012 | 1204 | -192 | -16% | 121 | 117 | 4 | 3% |

| | | | | | | | | | |
|------------------|----------------------|------|------|------|------|-----|-----|----|----|
| Mansfield | Domestic Crimes | 542 | 455 | 87 | 19% | 62 | 61 | 1 | 2% |
| | Domestic Incidents | 982 | 1211 | -229 | -19% | 128 | 117 | 11 | 9% |
| | Domestic Abuse Total | 1524 | 1666 | -142 | -9% | 190 | 178 | 12 | 7% |

| | | | | | | | | | |
|------------------------------|----------------------|------|------|------|------|-----|-----|----|-----|
| Newark & Sherwood | Domestic Crimes | 360 | 320 | 40 | 13% | 49 | 42 | 7 | 17% |
| | Domestic Incidents | 730 | 836 | -106 | -13% | 114 | 94 | 20 | 21% |
| | Domestic Abuse Total | 1090 | 1156 | -66 | -6% | 163 | 136 | 27 | 20% |

| | | | | | | | | | |
|-------------------|----------------------|-----|-----|-----|------|----|----|----|------|
| Rushcliffe | Domestic Crimes | 145 | 154 | -9 | -6% | 18 | 22 | -4 | -18% |
| | Domestic Incidents | 350 | 392 | -42 | -11% | 52 | 30 | 22 | 73% |
| | Domestic Abuse Total | 495 | 546 | -51 | -9% | 70 | 52 | 18 | 35% |

To monitor the number of Hate Crimes

| Area | Offence Type | Year-to-Date Performance | | | | Month-to-Date Performance | | | |
|--------------|-----------------------|--------------------------|---------|------------|------------|---------------------------|---------------|------------|------------|
| | | 2014/15 | 2013/14 | Volume | Percentage | November 2014 | November 2013 | Volume | Percentage |
| | | | | Difference | Difference | | | Difference | Difference |
| Force | Victim-Based Offences | 289 | 250 | 39 | 16% | 37 | 22 | 15 | 68% |
| | Public Order Offences | 340 | 274 | 66 | 24% | 35 | 25 | 10 | 40% |
| | Hate Crime Total | 629 | 524 | 105 | 20% | 72 | 47 | 25 | 53% |

| Area | Offence Type | 2014/15 | 2013/14 | Volume | Percentage | November 2014 | November 2013 | Volume | Percentage |
|------------------------|-----------------------|---------|---------|------------|------------|---------------|---------------|------------|------------|
| | | | | Difference | Difference | | | Difference | Difference |
| | | | | | | | | | |
| Nottingham City | Victim-Based Offences | 155 | 121 | 34 | 28% | 24 | 15 | 9 | 60% |
| | Public Order Offences | 172 | 168 | 4 | 2% | 20 | 10 | 10 | 100% |
| | Hate Crime Total | 327 | 289 | 38 | 13% | 44 | 25 | 19 | 76% |

| | | | | | | | | | |
|-------------------------------|-----------------------|-----|-----|----|-----|----|----|---|-----|
| Nottinghamshire County | Victim-Based Offences | 134 | 129 | 5 | 4% | 13 | 7 | 6 | 86% |
| | Public Order Offences | 168 | 106 | 62 | 58% | 15 | 15 | 0 | 0% |
| | Hate Crime Total | 302 | 235 | 67 | 29% | 28 | 22 | 6 | 27% |

| Area | Offence Type | 2014/15 | 2013/14 | Volume | Percentage | November 2014 | November 2013 | Volume | Percentage |
|-----------------|-----------------------|---------|---------|------------|------------|---------------|---------------|------------|------------|
| | | | | Difference | Difference | | | Difference | Difference |
| | | | | | | | | | |
| Ashfield | Victim-Based Offences | 21 | 20 | 1 | 5% | 1 | 3 | -2 | -67% |
| | Public Order Offences | 26 | 29 | -3 | -10% | 0 | 3 | -3 | -100% |
| | Hate Crime Total | 47 | 49 | -2 | -4% | 1 | 6 | -5 | -83% |

| | | | | | | | | | |
|------------------|-----------------------|----|----|----|------|---|---|---|--------|
| Bassetlaw | Victim-Based Offences | 27 | 11 | 16 | 145% | 3 | 0 | 3 | #DIV/0 |
| | Public Order Offences | 32 | 12 | 20 | 167% | 2 | 2 | 0 | 0% |
| | Hate Crime Total | 59 | 23 | 36 | 157% | 5 | 2 | 3 | 150% |

| | | | | | | | | | |
|-----------------|-----------------------|----|----|-----|------|---|---|----|-------|
| Broxtowe | Victim-Based Offences | 8 | 23 | -15 | -65% | 0 | 1 | -1 | -100% |
| | Public Order Offences | 13 | 9 | 4 | 44% | 0 | 1 | -1 | -100% |
| | Hate Crime Total | 21 | 32 | -11 | -34% | 0 | 2 | -2 | -100% |

| | | | | | | | | | |
|-------------|-----------------------|-----|-----|----|-----|----|----|----|------|
| City | Victim-Based Offences | 155 | 121 | 34 | 28% | 24 | 15 | 9 | 60% |
| | Public Order Offences | 172 | 168 | 4 | 2% | 20 | 10 | 10 | 100% |
| | Hate Crime Total | 327 | 289 | 38 | 13% | 44 | 25 | 19 | 76% |

| | | | | | | | | | |
|----------------|-----------------------|----|----|----|-----|---|---|----|--------|
| Gedling | Victim-Based Offences | 20 | 21 | -1 | -5% | 1 | 0 | 1 | #DIV/0 |
| | Public Order Offences | 20 | 17 | 3 | 18% | 1 | 3 | -2 | -67% |
| | Hate Crime Total | 40 | 38 | 2 | 5% | 2 | 3 | -1 | -33% |

| | | | | | | | | | |
|------------------|-----------------------|----|----|----|------|----|---|----|------|
| Mansfield | Victim-Based Offences | 25 | 28 | -3 | -11% | 5 | 1 | 4 | 400% |
| | Public Order Offences | 33 | 27 | 6 | 22% | 8 | 2 | 6 | 300% |
| | Hate Crime Total | 58 | 55 | 3 | 5% | 13 | 3 | 10 | 333% |

| | | | | | | | | | |
|------------------------------|-----------------------|----|----|----|------|---|---|----|--------|
| Newark & Sherwood | Victim-Based Offences | 24 | 18 | 6 | 33% | 2 | 0 | 2 | #DIV/0 |
| | Public Order Offences | 30 | 11 | 19 | 173% | 3 | 4 | -1 | -25% |
| | Hate Crime Total | 54 | 29 | 25 | 86% | 5 | 4 | 1 | 25% |

| | | | | | | | | | |
|-------------------|-----------------------|----|---|----|--------|---|---|----|--------|
| Rushcliffe | Victim-Based Offences | 9 | 8 | 1 | 13% | 1 | 2 | -1 | -50% |
| | Public Order Offences | 14 | 1 | 13 | 1,300% | 1 | 0 | 1 | #DIV/0 |
| | Hate Crime Total | 23 | 9 | 14 | 156% | 2 | 2 | 0 | 0% |