



Nottinghamshire PCC Police and Crime Survey – Q1

July 2018



information by design

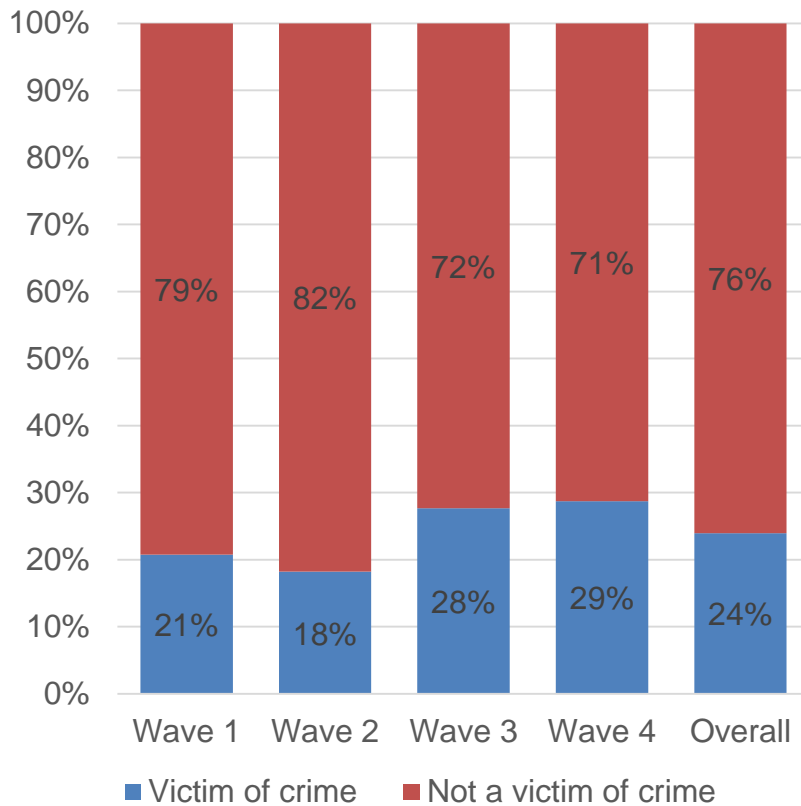
Introduction and Methodology

- ❑ This short presentation gives the 'top-line' results from waves 1, 2, 3 and 4 of the Nottinghamshire Police and Crime Commissioner Crime Survey
- ❑ Fieldwork was conducted between 23th August and 29th September 2017 for wave 1, between 12th November 2017 and 2nd January 2018 for wave 2, between 10th and 31st March 2018 for wave 3 and between 26th May and 17th June 2018 for wave 4.
- ❑ The survey was undertaken by an 'assisted self-completion' method, with a team of fieldwork staff working across selected LSOAs. 1 in 8 LSOAs were selected from each of the following geographic areas:
 - Nottingham
 - South Notts - comprising Gedling, Broxtowe and Rushcliffe
 - BNS – comprising Bassetlaw, Newark and Sherwood
 - Mansfield and Ashfield
- ❑ The achieved sample was 1,083 respondents in wave 1, 1,098 respondents in wave 2, 1,101 in wave 3, and 1,121 respondents in wave 4 broken down as follows:

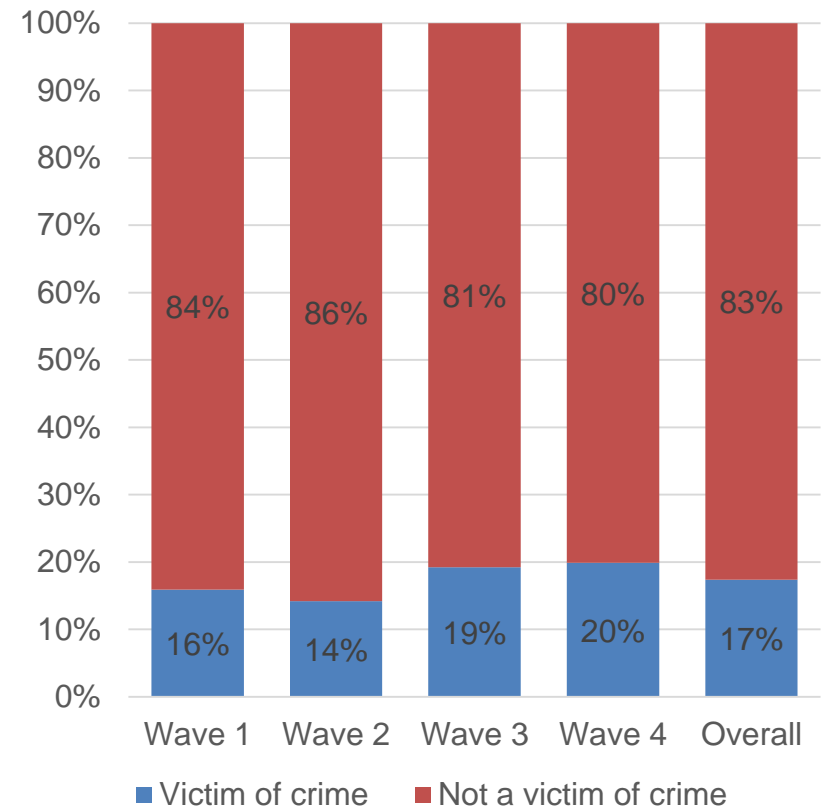
Area	Local Authority	Wave 1 Unweighted Count	Wave 2 Unweighted Count	Wave 3 Unweighted Count	Wave 4 Unweighted Count
Bassetlaw, Newark and Sherwood	Bassetlaw	106	111	187	173
	Newark and Sherwood	157	167	93	102
	Total	263	278	280	275
Mansfield and Ashfield	Ashfield	140	158	175	127
	Mansfield	129	120	91	160
	Total	269	278	266	287
Nottingham	Nottingham	271	266	276	274
South Nottinghamshire	Broxtowe	100	89	72	117
	Gedling	108	74	91	95
	Rushcliffe	72	113	116	73
	Total	280	276	279	285

Overall, 24% of respondents had been victim of a crime in the last 12 months, which reduces to 17% when online fraud and computer misuse are excluded.

In the last 12 months, have you personally been a victim of crime?



In the last 12 months, have you personally been a victim of crime (excluding online fraud and computer viruses or malware)?



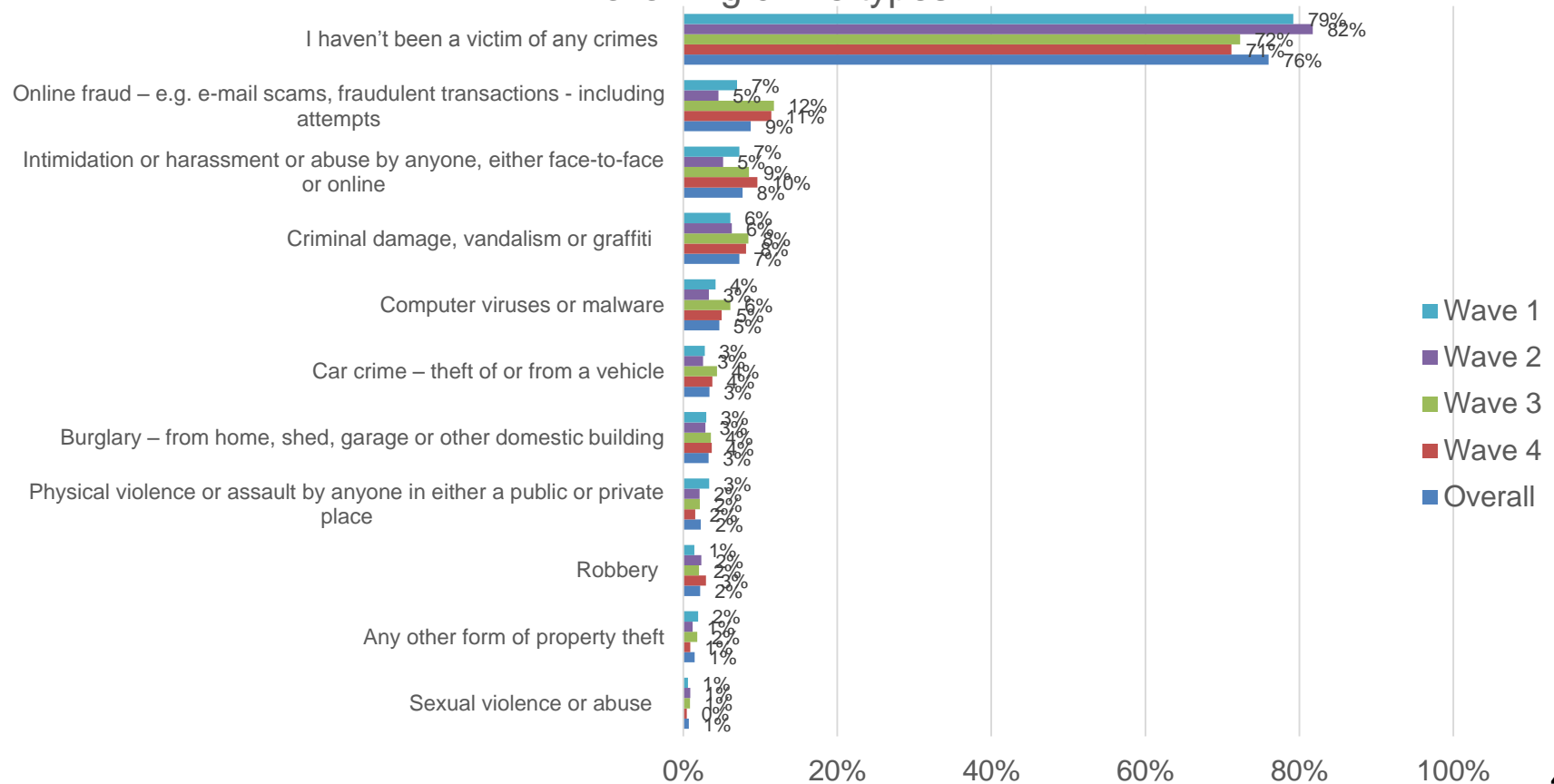
Base: Wave 1 = 1,032, Wave 2 = 1,044, Wave 3 = 1,076, Wave 4 = 1,103

Q: In the last 12 months, have you personally been a victim of any of the following crime types?

Overall, 24% of respondents had been victim of a crime in the last 12 months, which reduces to 17% when online fraud and computer misuse are excluded

- 2% of respondents had experienced hate related crime and 1% had experienced domestic violence/abuse related crime

In the last 12 months, have you personally been a victim of any of the following crime types?

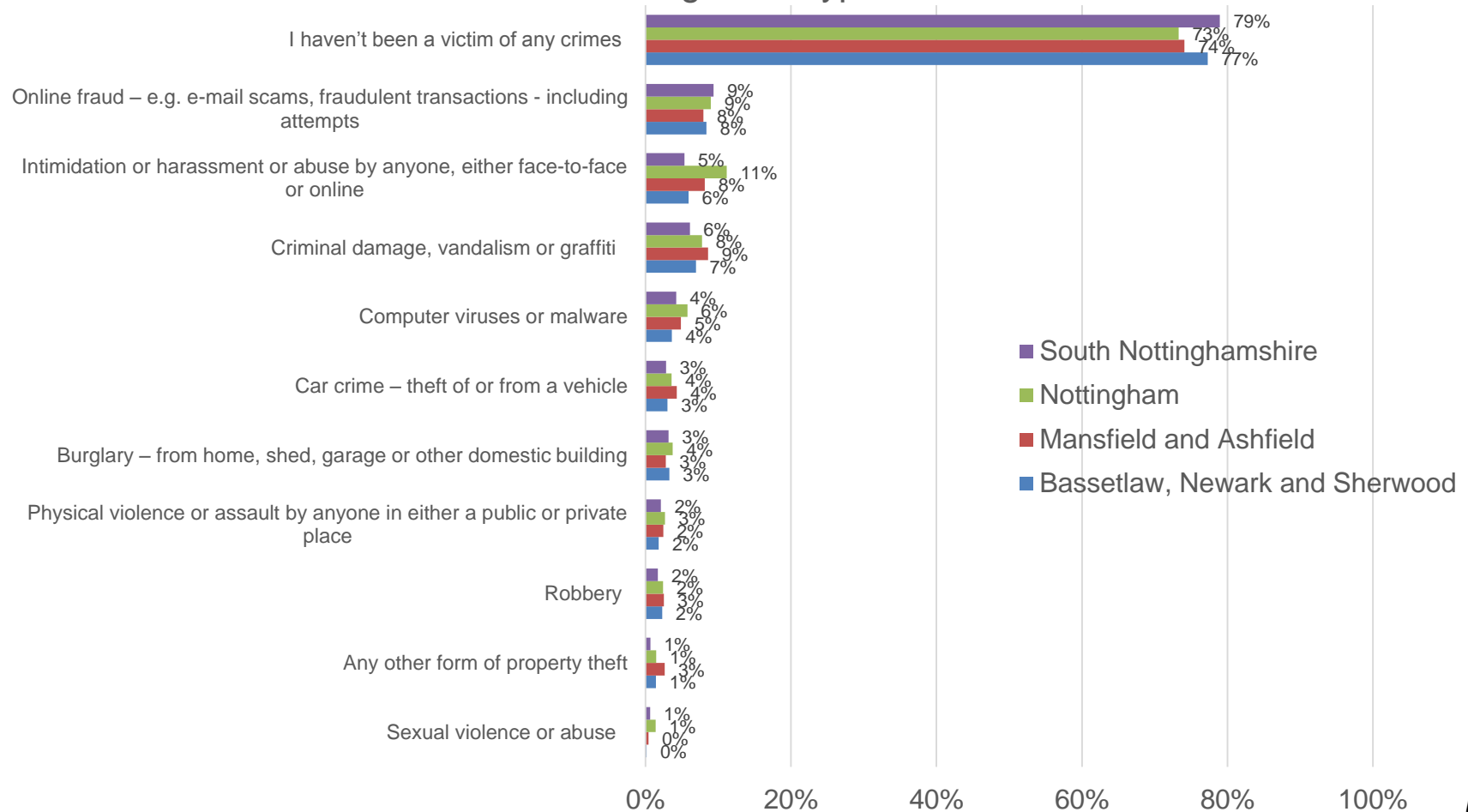


Base: Wave 1 = 1,032, Wave 2 = 1,044, Wave 3 = 1,076, Wave 4 = 1,103

Q: In the last 12 months, have you personally been a victim of any of the following crime types?

21% of respondents from South Nottinghamshire, 23% from Bassetlaw, Newark and Sherwood, 26% from Mansfield and Ashfield and 27% from Nottingham had been victim of a crime in the last 12 months

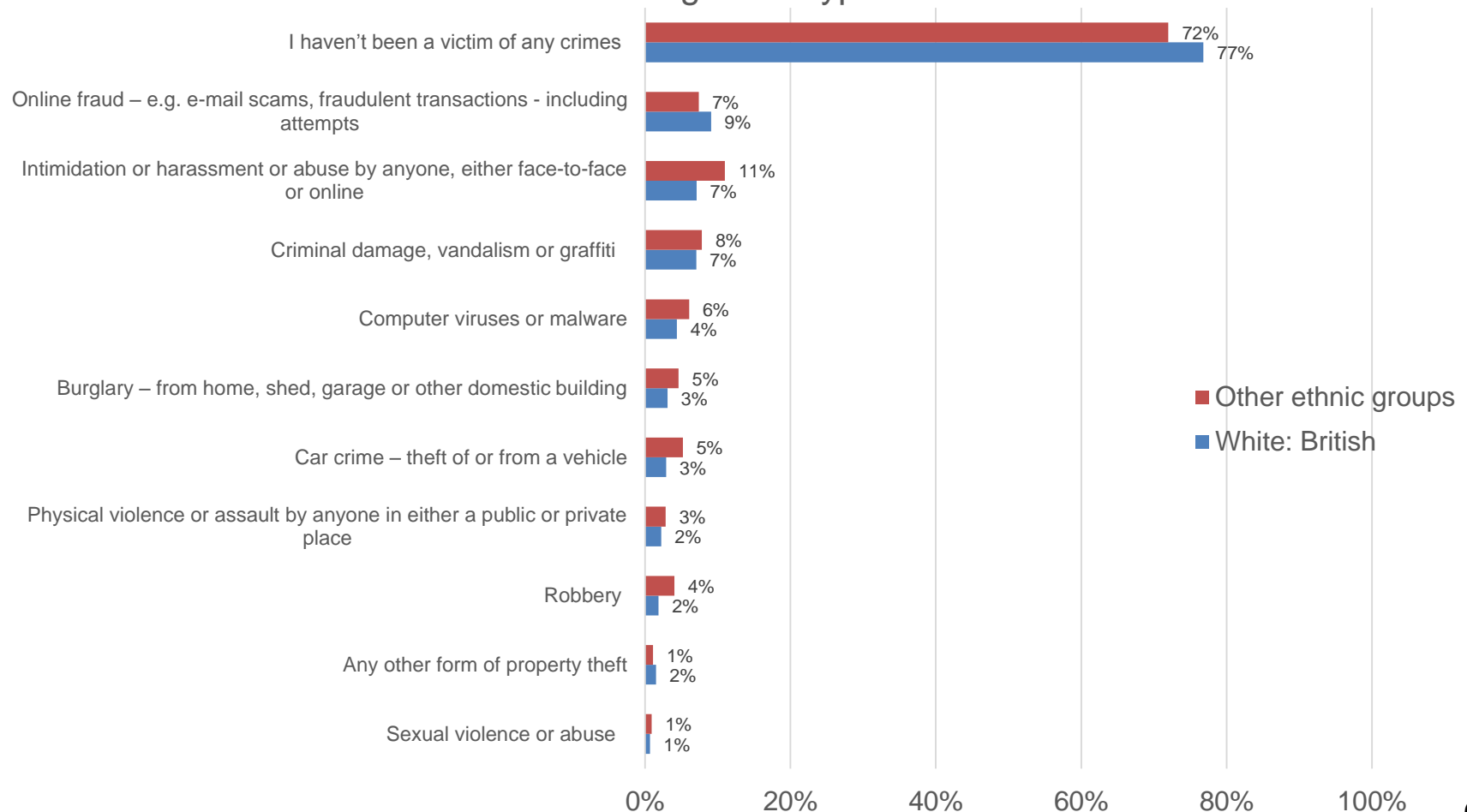
In the last 12 months, have you personally been a victim of any of the following crime types?



Base: Bassetlaw, Newark and Sherwood = 886, Mansfield and Ashfield = 866, Nottingham = 1,206, South Nottinghamshire = 1,297 Q: In the last 12 months, have you personally been a victim of any of the following crime types?

23% of respondents who were White British and 28% of respondents from other ethnic groups had been victim of a crime in the last 12 months

In the last 12 months, have you personally been a victim of any of the following crime types?

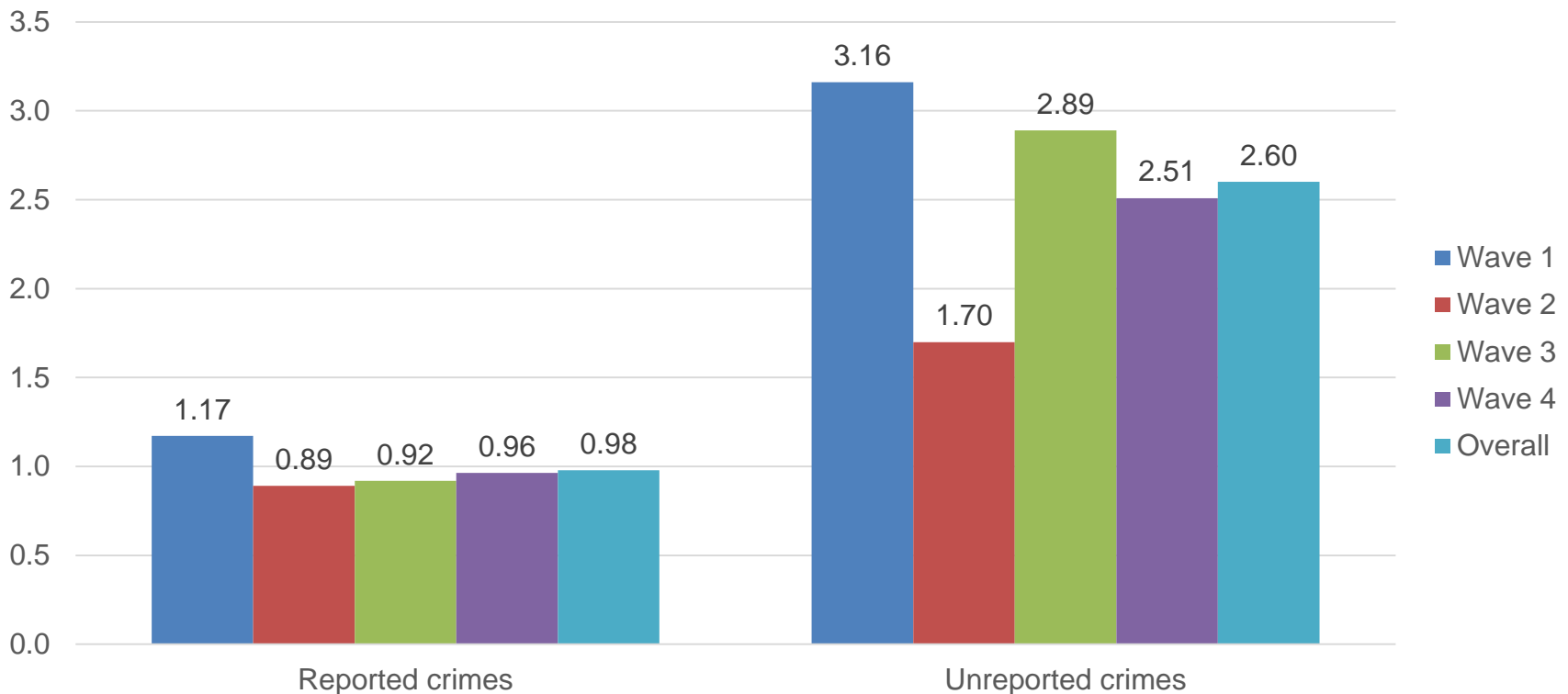


Base: White British = 3,555, Other ethnic groups = 630 Q: In the last 12 months, have you personally been a victim of any of the following crime types?

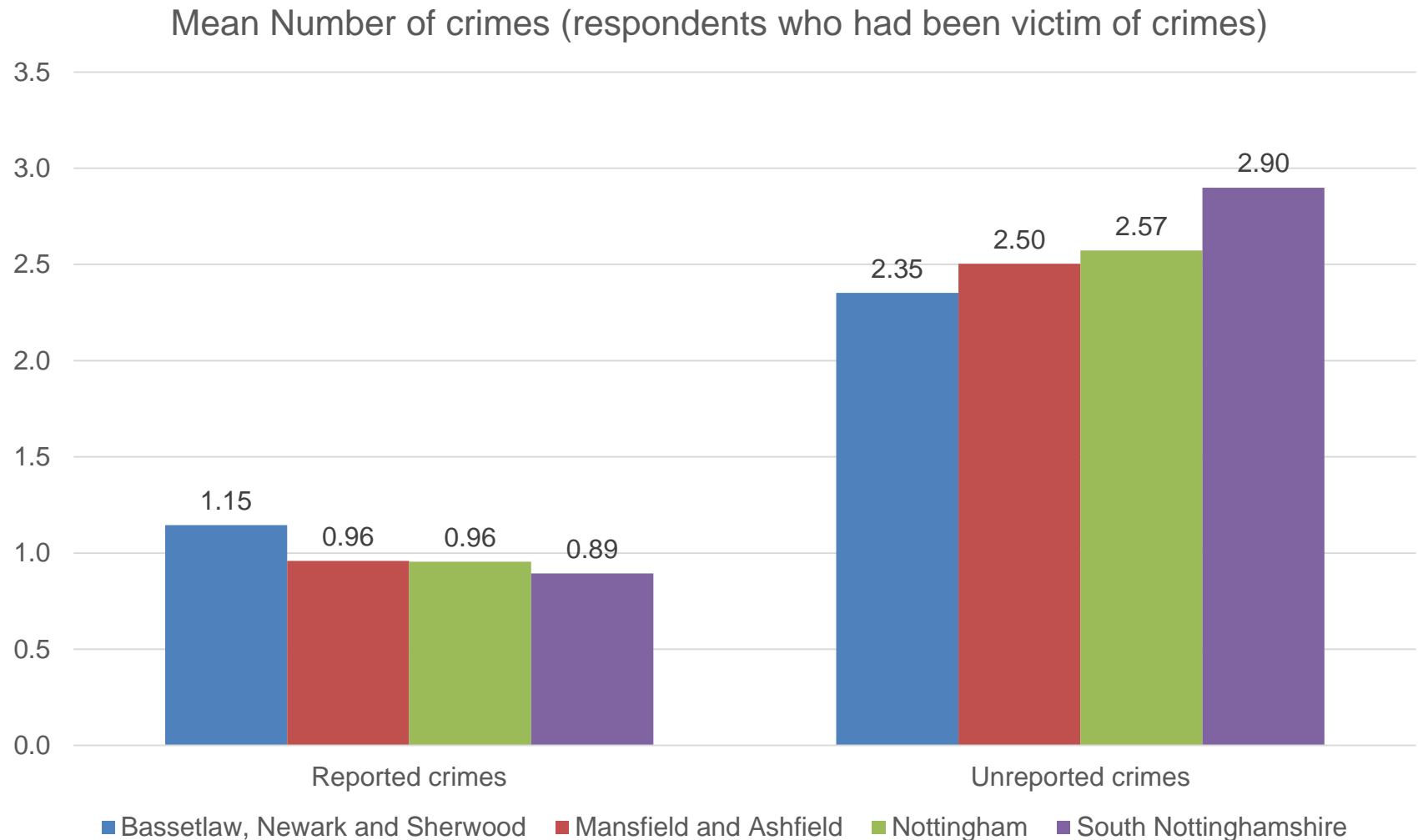
59% of victims experienced one crime over the last 12 months, while 22% had experienced two crimes. 27% of all crimes experienced were reported to police

- Of respondents who had been a victim of crime in the last 12 months, 59% had experienced one crime, 22% had experienced two crimes, 11% had experienced three crimes and 8% had experienced four or more crimes.
- The mean number of crimes experienced by those that were victims of more than one crime was 5.49.

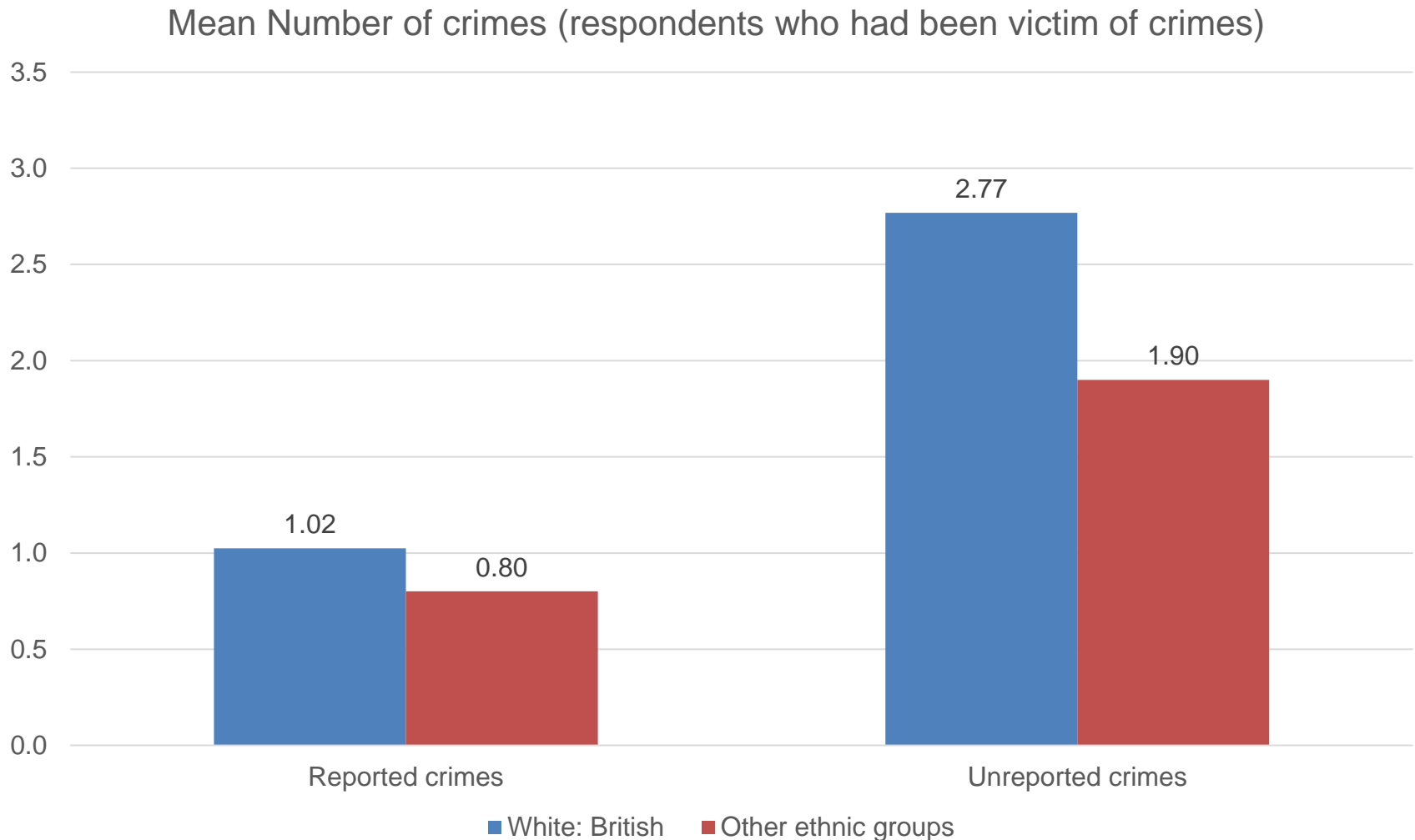
Mean Number of crimes (respondents who had been victim of crimes)



Higher mean number of reported crimes in Bassetlaw, Newark and Sherwood and higher mean number of unreported crimes in South Nottinghamshire



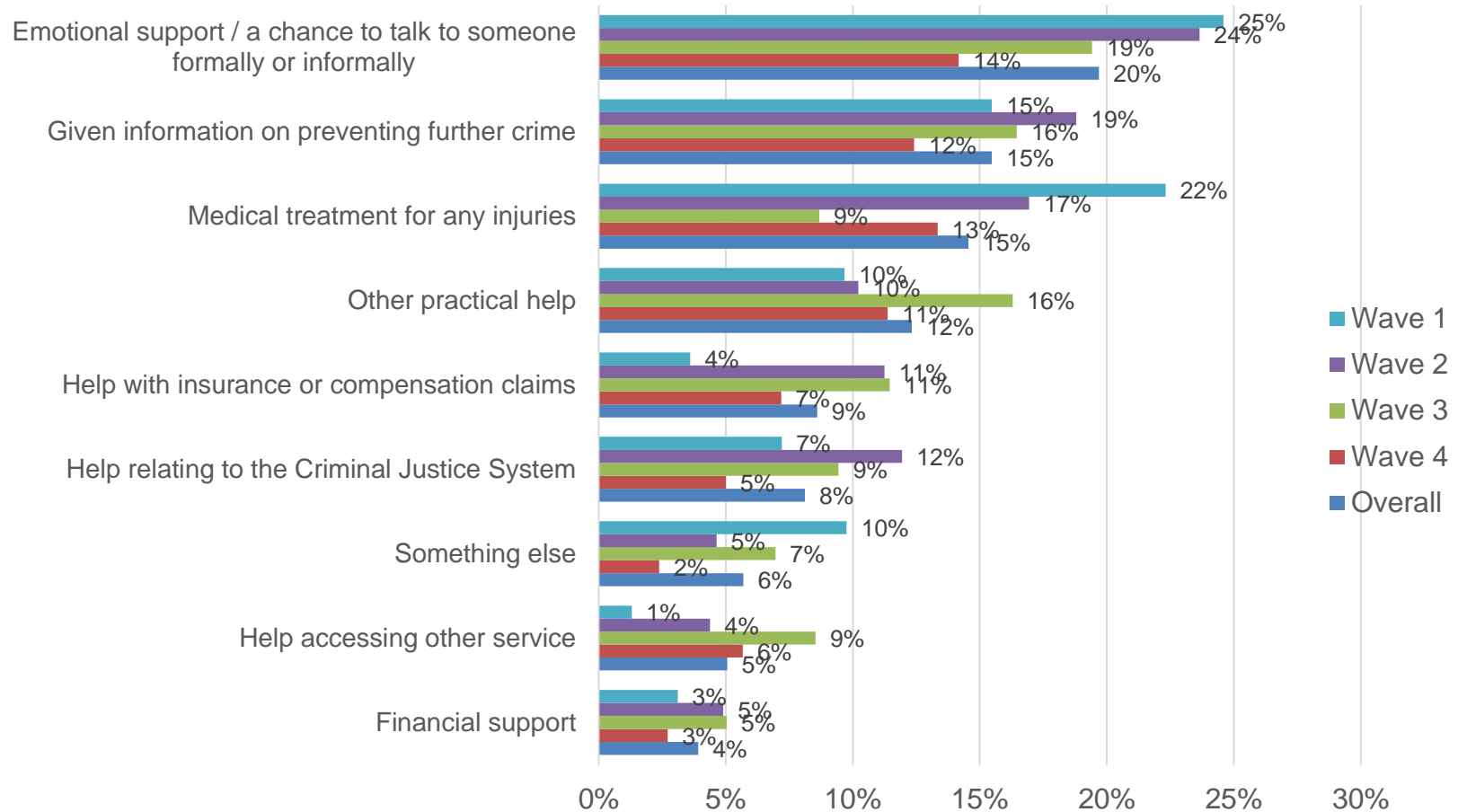
Higher mean number of unreported crimes for White British respondents



Base: White British = 823, Other ethnic groups = 177 Q: In the last 12 months, **how many times** have you personally been a victim of the following crime types? (Trimmed to 30)

42% of respondents who had been a victim of crime had received some form of information, advice or support

Did you receive any of the following types of information, advice or support when you were the victim of this crime?

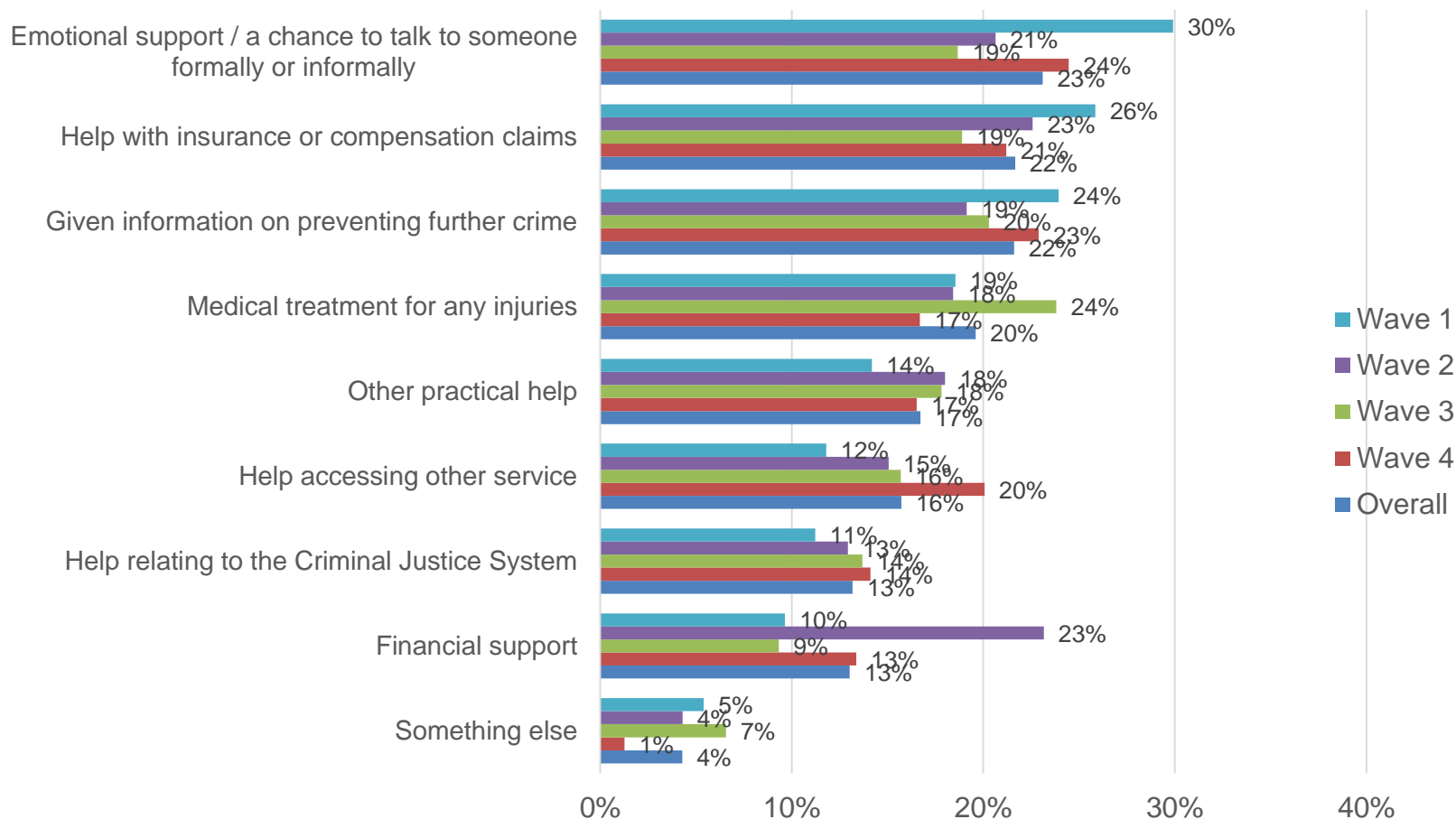


10

Base: Wave 1 = 22-149, Wave 2 = 36-142, Wave 3 = 34-227, Wave 4 = 31-222 Q: Did you receive any of the following types of information, advice or support when you were the victim of this crime, and if not, please tell us if you would have liked to receive any of the following support?

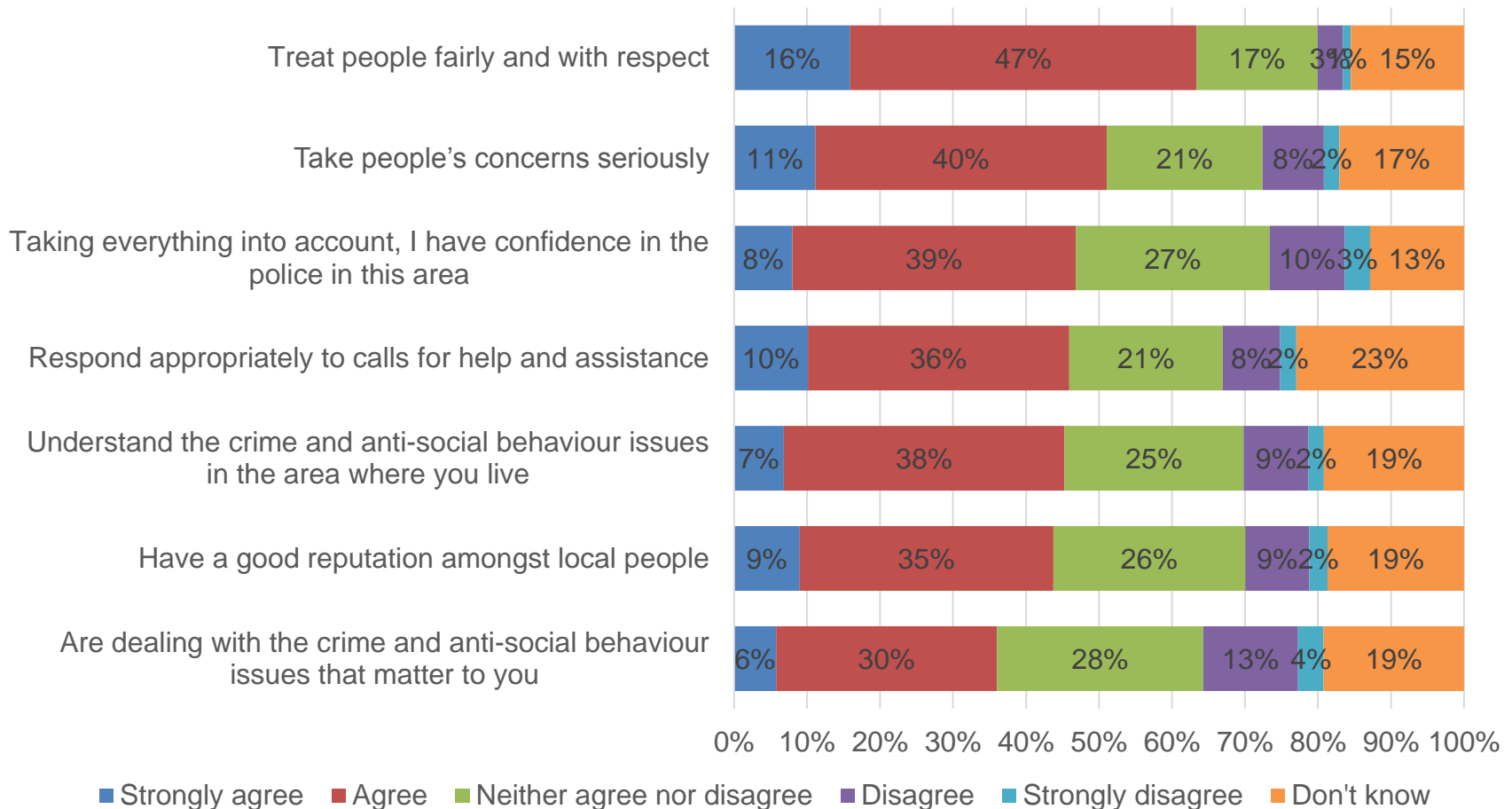
44% of respondents who had been a victim of crime would have liked to have received some form of information, advice or support

Would you have liked to receive any of the following types of information, advice or support when you were the victim of this crime?



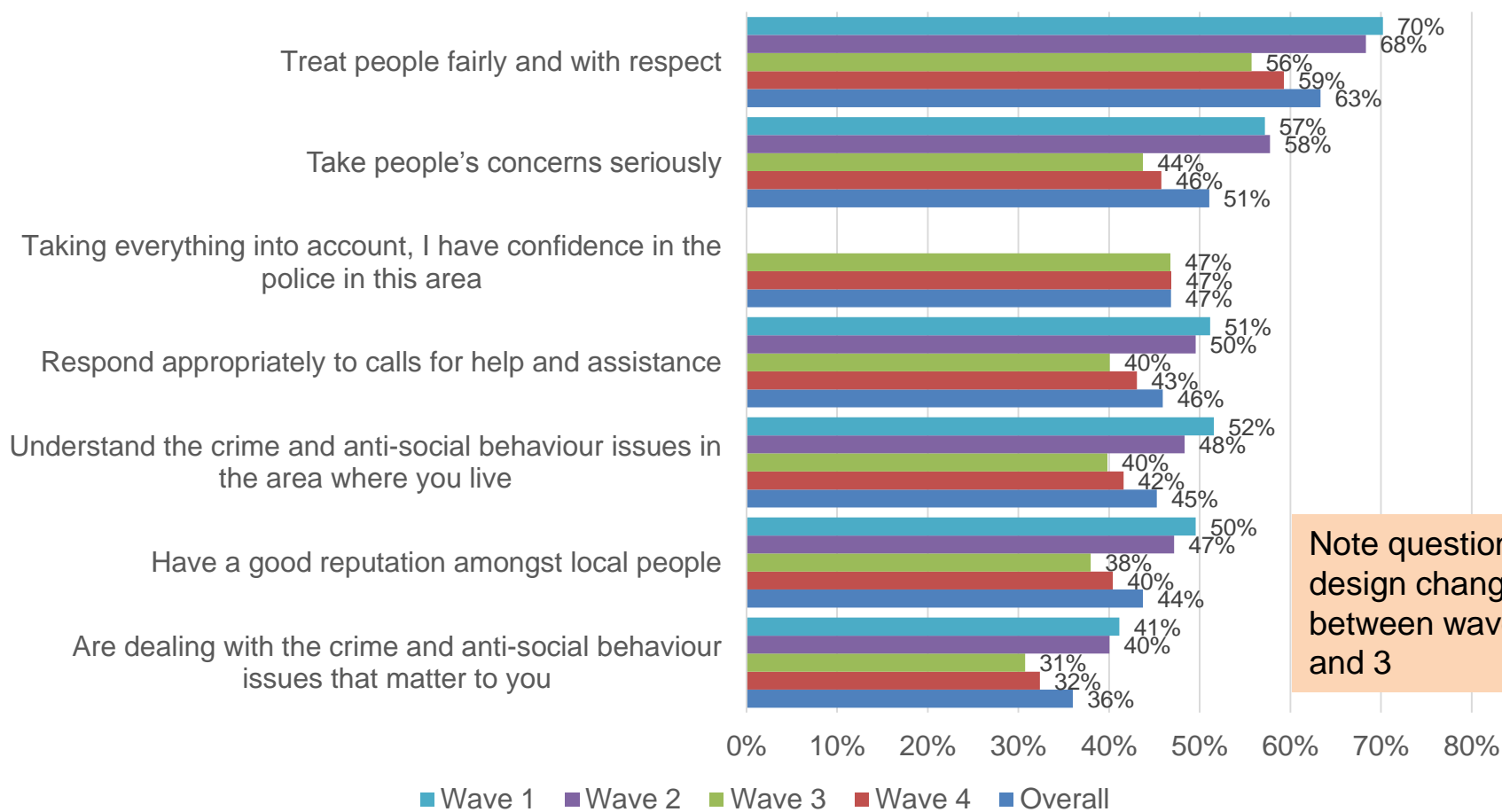
Waves 1-4 - 63% of respondents agreed that the police in their local area treat people fairly and with respect in wave 1-4 combined

Please say how much you agree or disagree with each of the following statements about the police in your local area – Wave 1 - 4



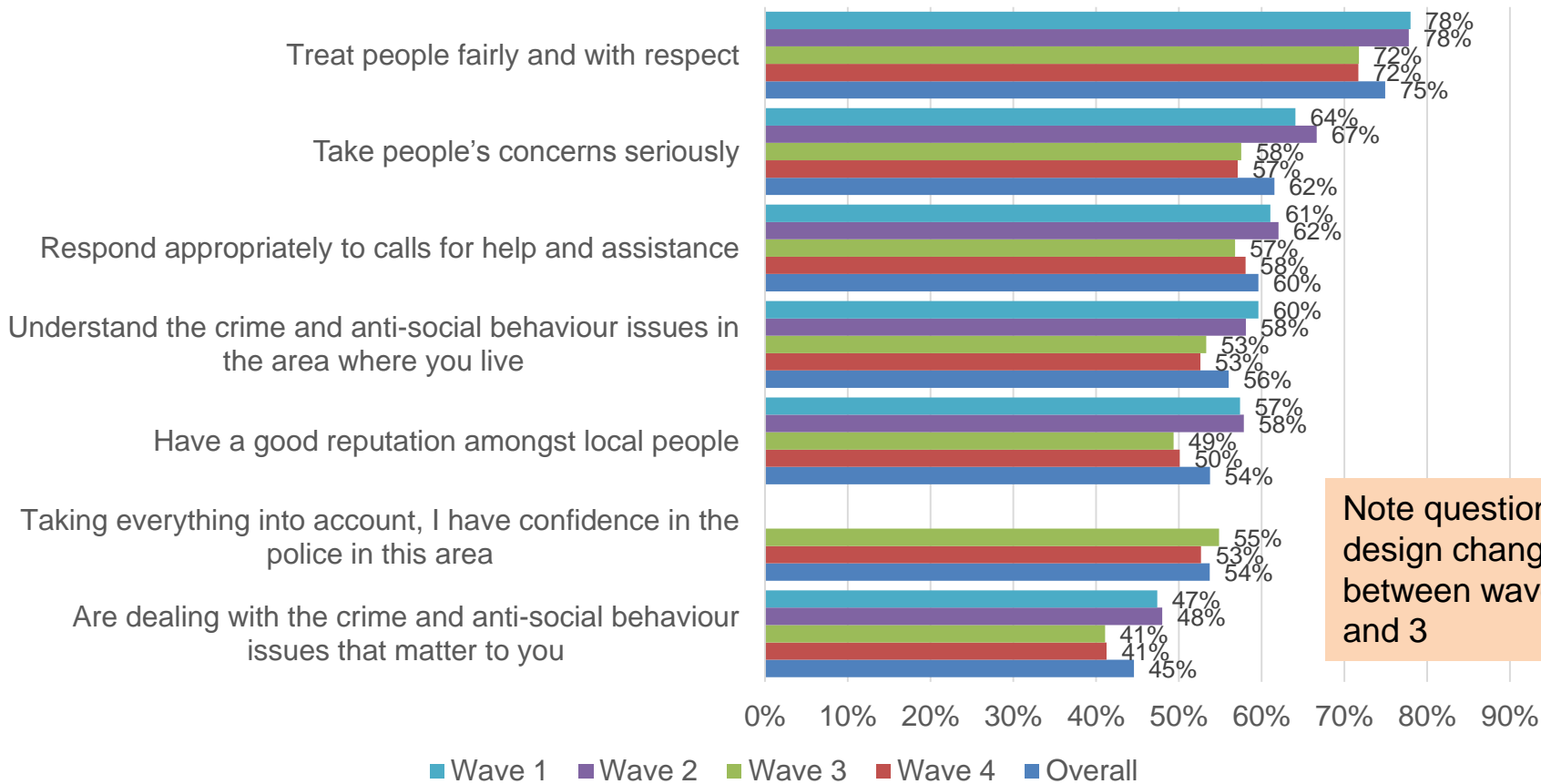
Across waves 1-4, 63% agreed that the police in their local area treat people fairly and with respect. Some declines in agreement in wave 3 and 4.

Please say how much you agree or disagree with each of the following statements about the police in your local area: - Strongly Agree & Agree



Excluding those who answered 'don't know' across waves 1-4, 78% agreed that the police in their local area treat people fairly and with respect. Some declines in agreement in wave 3 and 4.

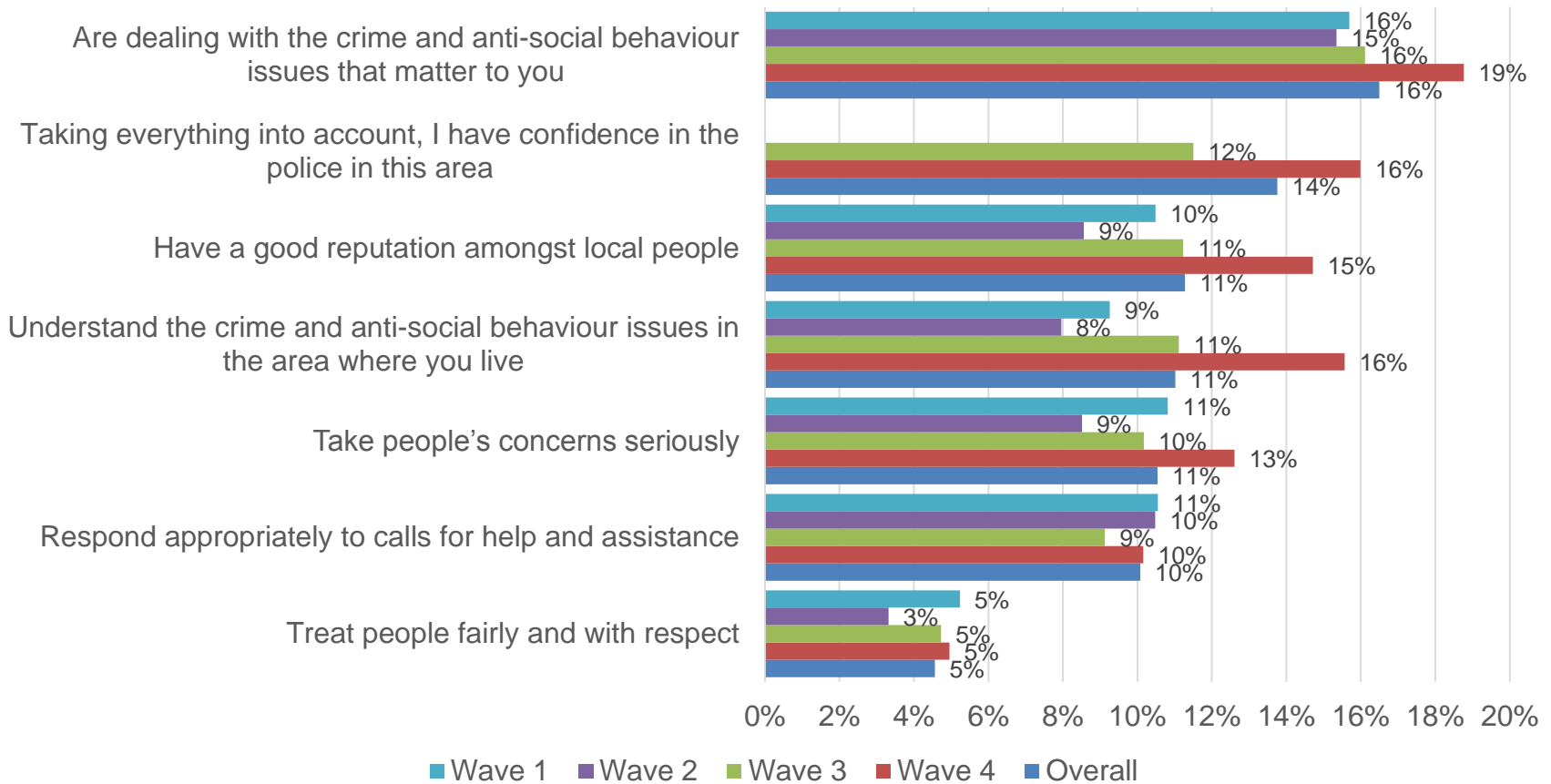
Please say how much you agree or disagree with each of the following statements about the police in your local area: - Strongly Agree & Agree – Excluding 'Don't know'



Note question design changes between waves 2 and 3

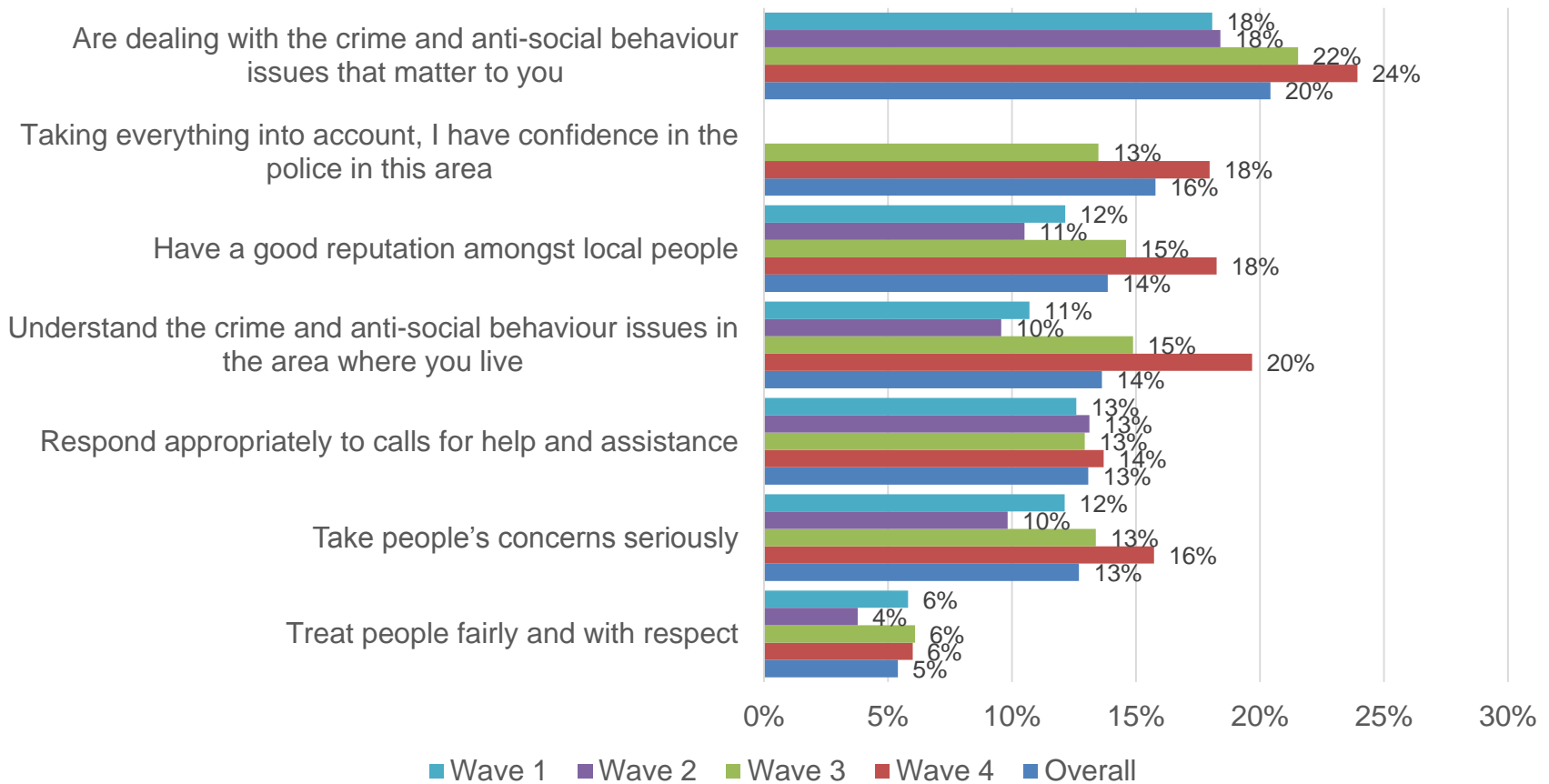
16% of respondents disagreed that the police in their local area are dealing with the crime and anti-social behavior issues that matter to them

Please say how much you agree or disagree with each of the following statements about the police in your local area: - Strongly Disagree & Disagree



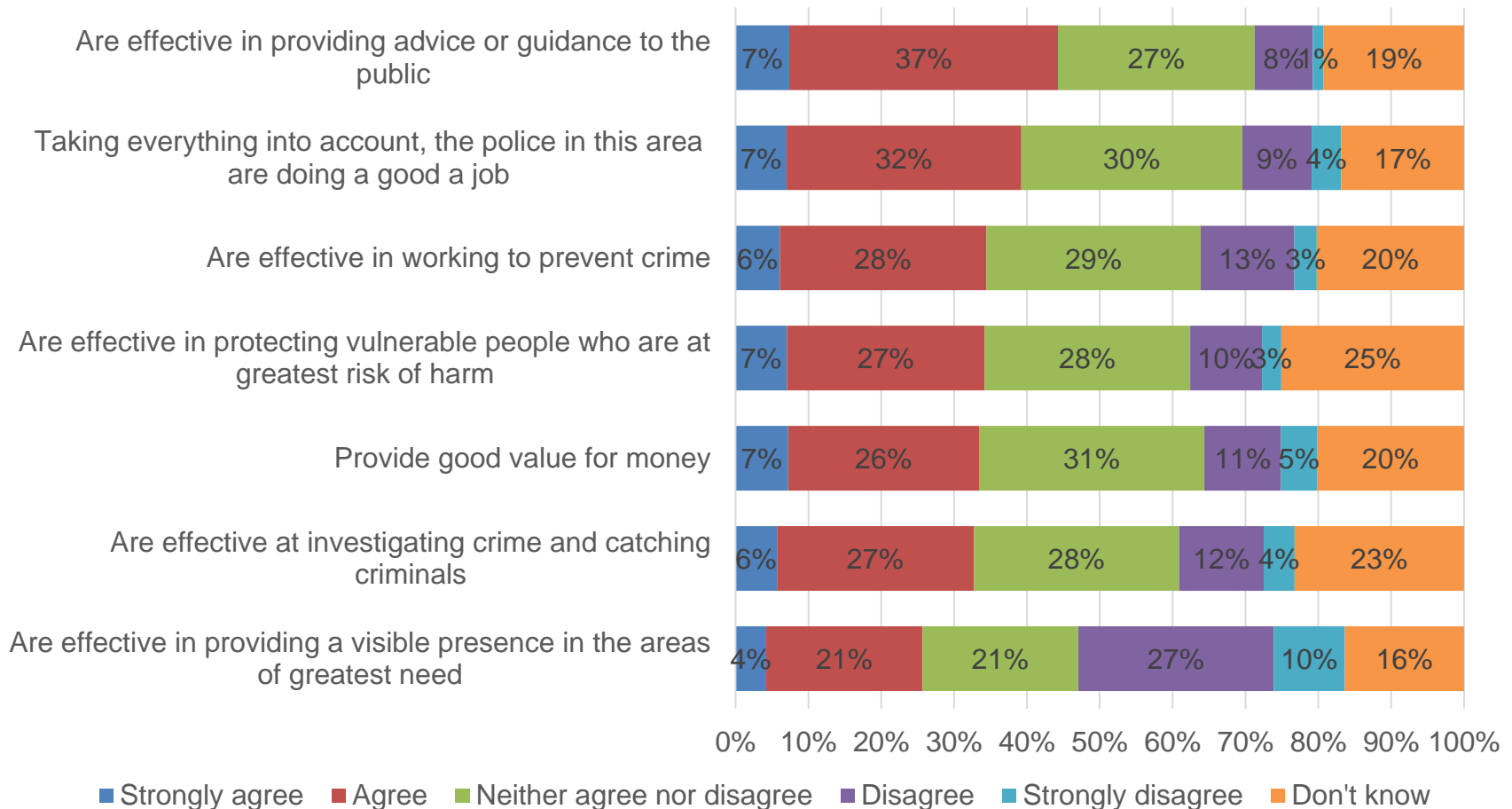
Excluding those who answered 'don't know', 20% of respondents disagreed that the police in their local area are dealing with the crime and anti-social behavior issues that matter to them

Please say how much you agree or disagree with each of the following statements about the police in your local area: - Strongly Disagree & Disagree – Excluding 'Don't know'



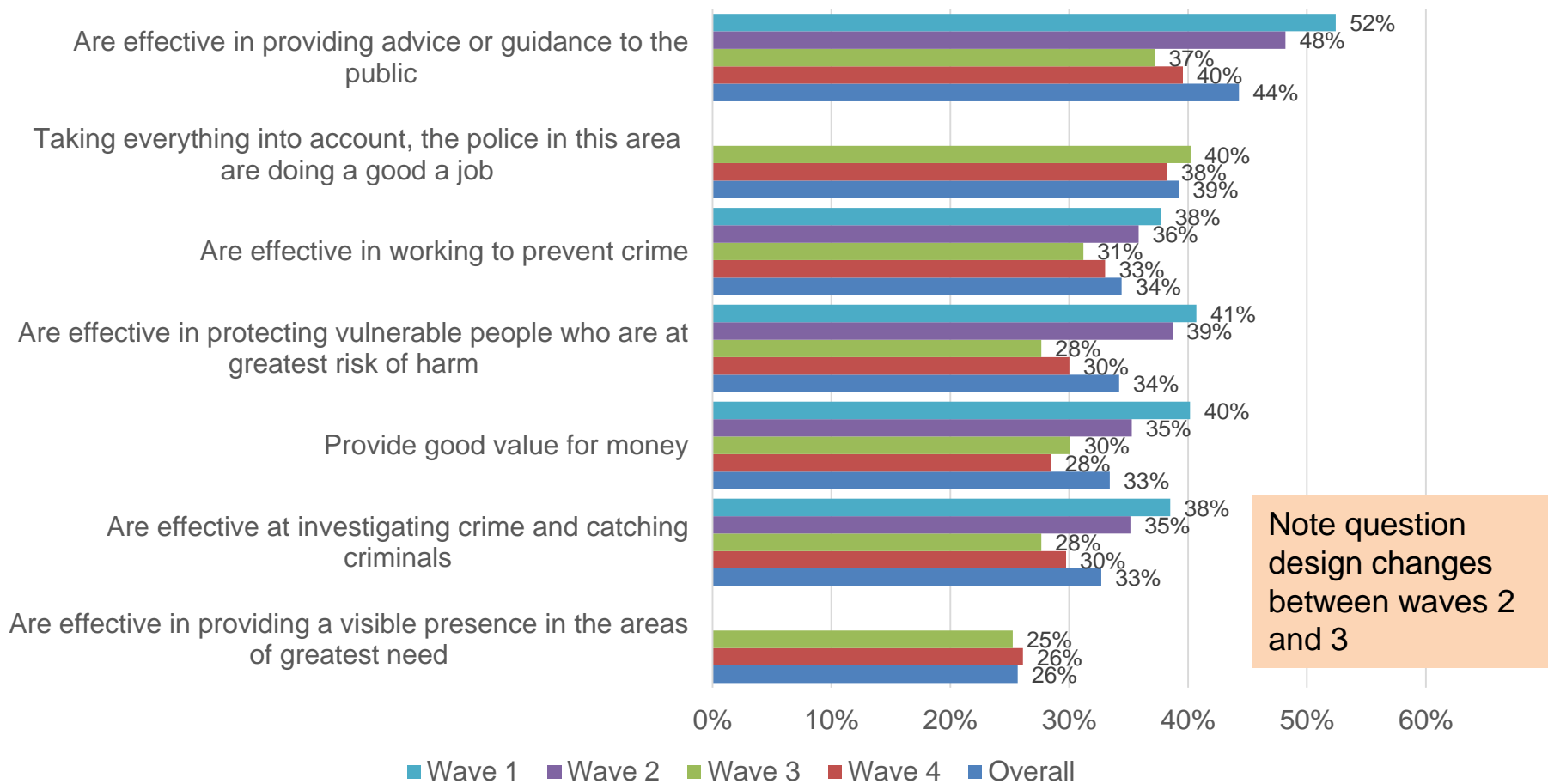
Waves 1-4 - 44% of respondents agreed that the police in their local area are effective in providing advice or guidance to the public

Please say how much you agree or disagree with each of the following statements about the police in your local area – Wave 1 - 4



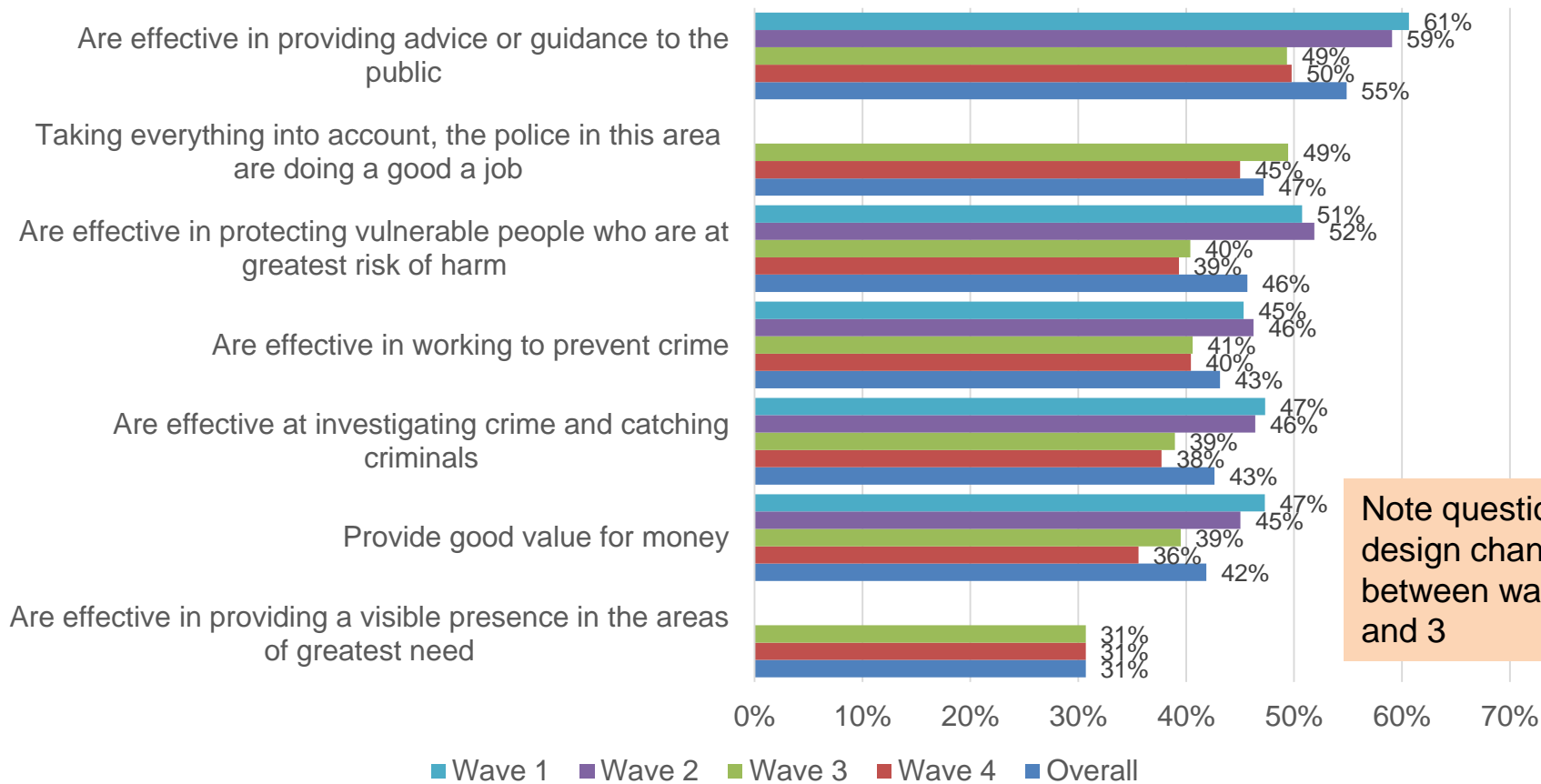
Across waves 1-4, 44% agreed that the police in their local area are effective in providing advice or guidance to the public; again some declines in wave 3 and 4

Please say how much you agree or disagree with each of the following statements about the police in your local area: - Strongly Agree & Agree



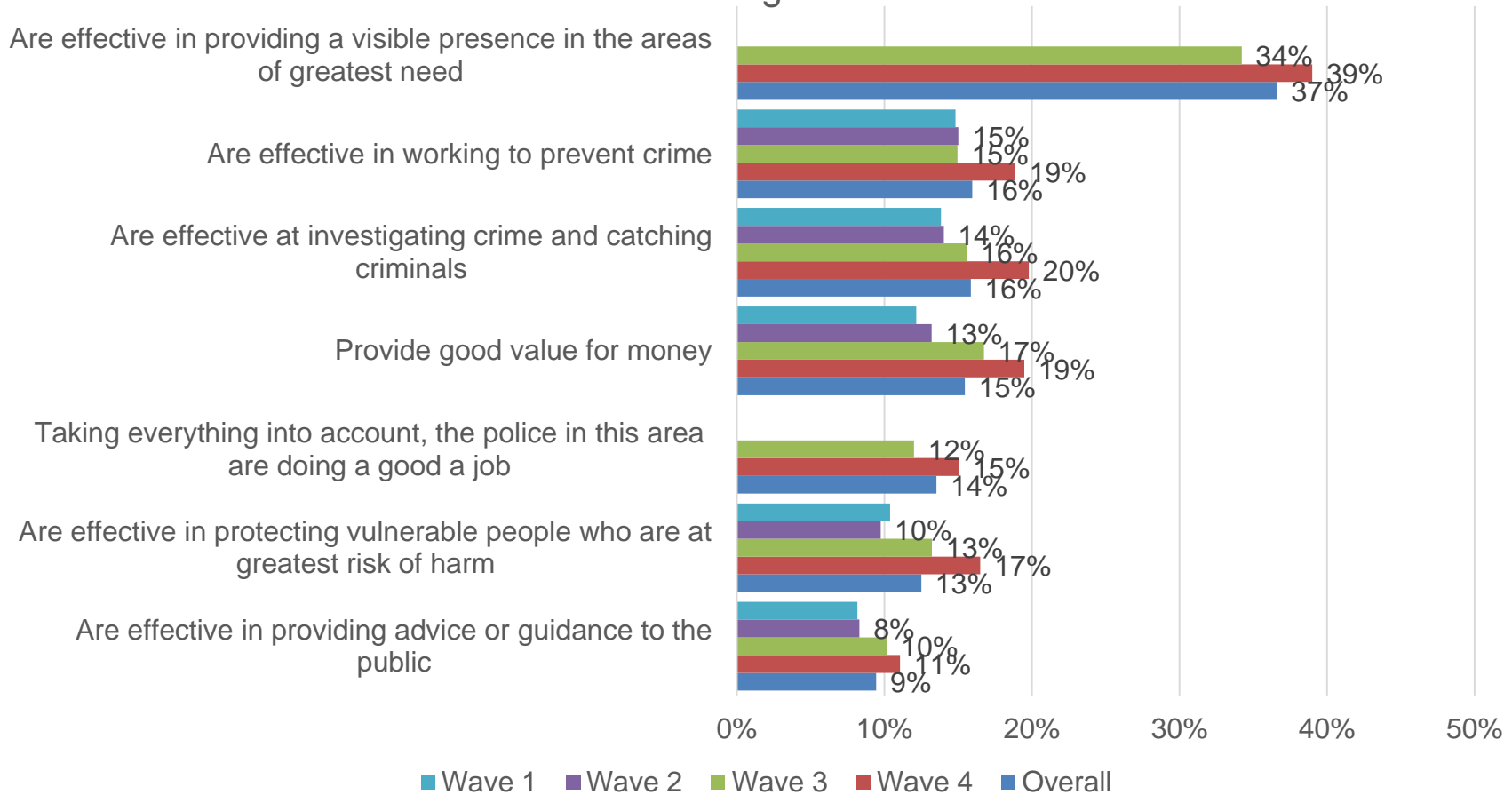
Excluding those who answered 'don't know' across waves 1-4, 55% agreed that the police in their local area are effective in providing advice or guidance to the public; again some declines in wave 3 and 4

Please say how much you agree or disagree with each of the following statements about the police in your local area: - Strongly Agree & Agree – Excluding 'Don't know'



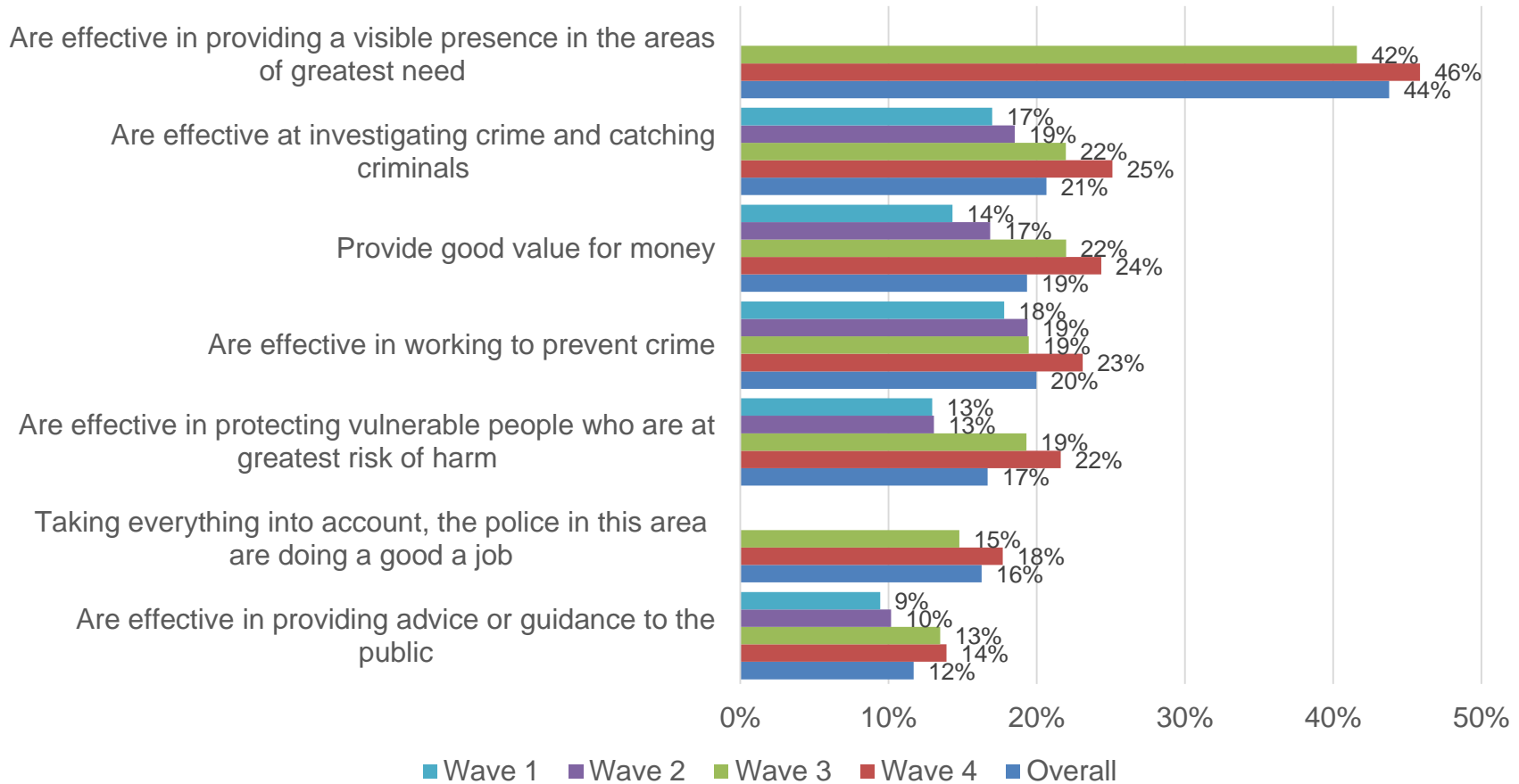
37% of respondents in wave 3 and 4 disagreed that the police in their local area are effective in providing a visible presence in the area of greatest need

Please say how much you agree or disagree with each of the following statements about the police in your local area: - Strongly Disagree & Disagree



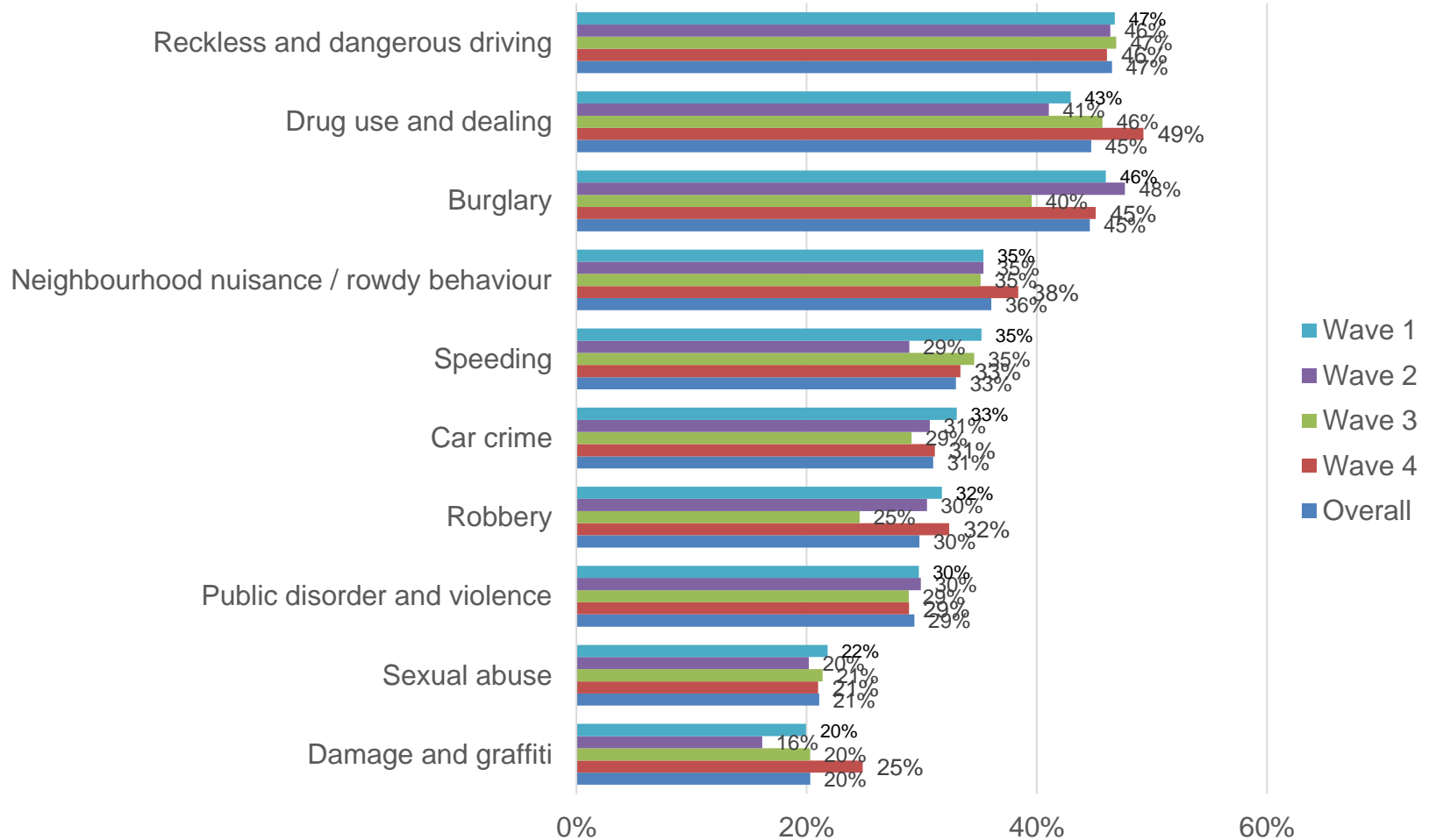
Excluding those who answered 'don't know', 44% of respondents in wave 3 and 4 disagreed that the police in their local area are effective in providing a visible presence in the area of greatest need

Please say how much you agree or disagree with each of the following statements about the police in your local area: - Strongly Disagree & Disagree – Excluding 'Don't know'



Reckless and dangerous driving, drug use and dealing and burglary remain the top crime and ASB issues respondents would like to see tackled

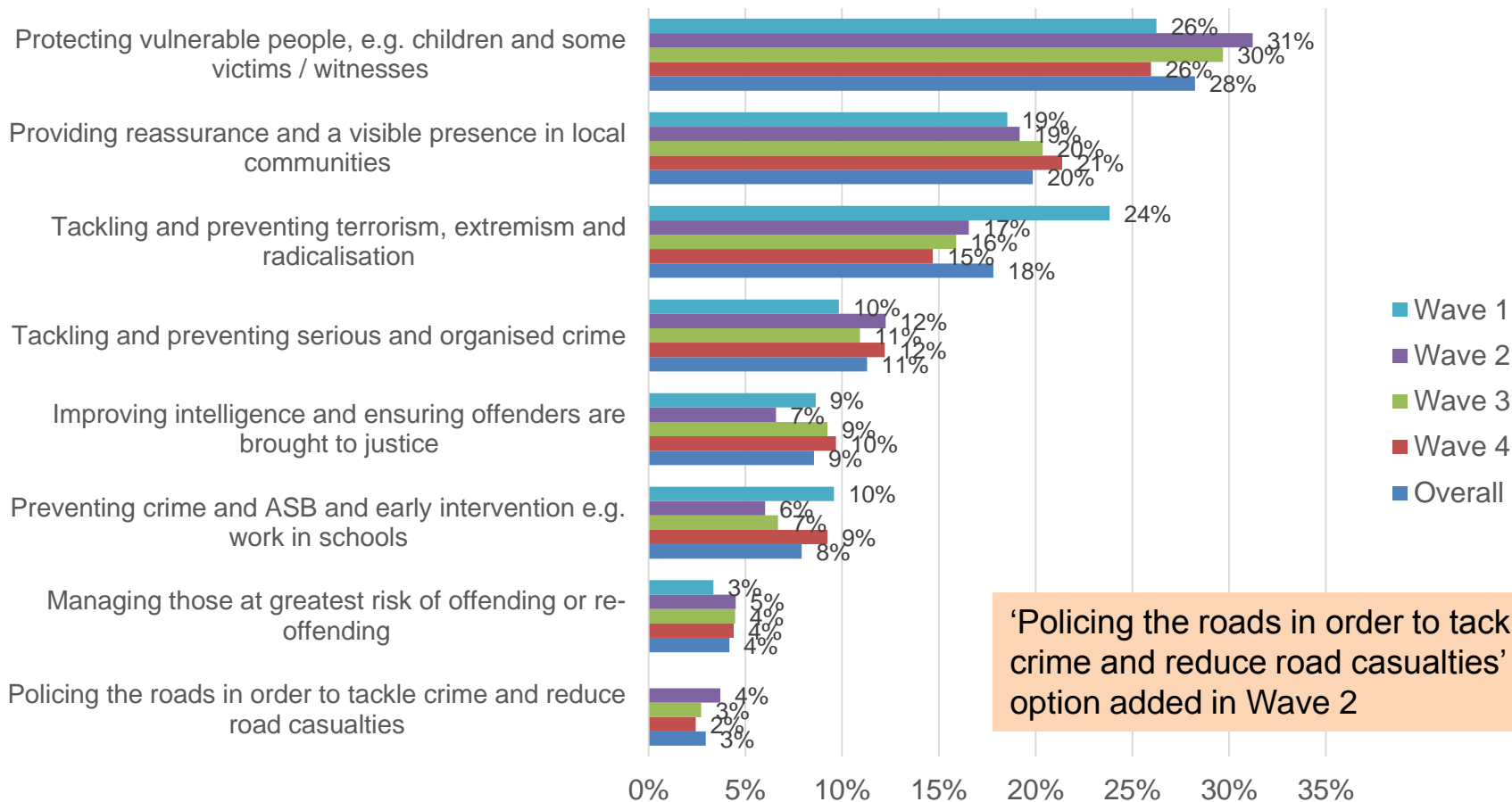
Are there any specific crime or anti-social behaviour issues that you would like to see the police and other agencies do more to tackle in your area?



Base: Wave 1 = 1,042, Wave 2 = 1,047, Wave 3 = 1,023, Wave 4 = 1,033 Q: And are there any specific crime or anti-social behaviour issues that you would like to see the police and other agencies do more to tackle in your area?

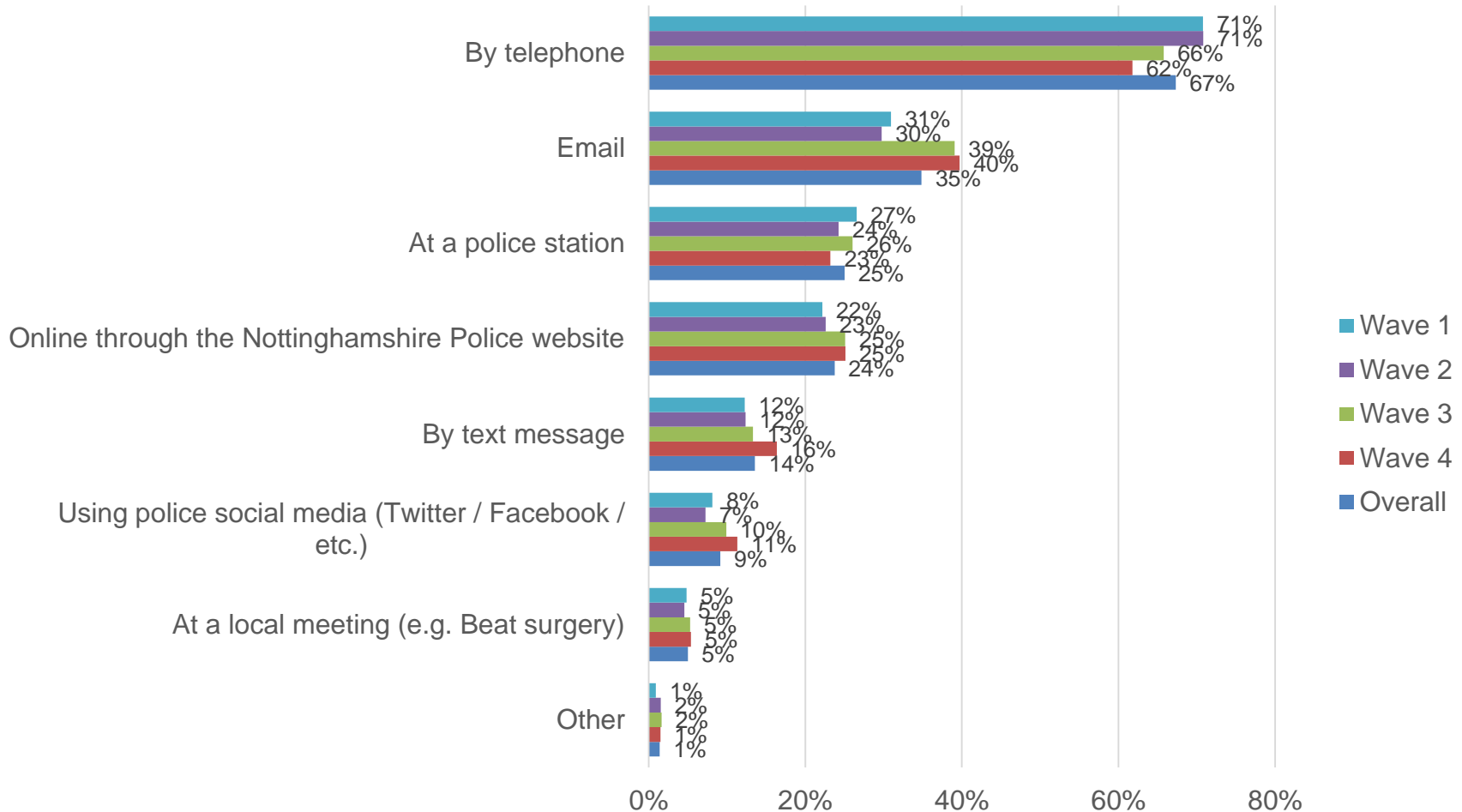
28% of respondents ranked protecting vulnerable people as the aspect they would most like to see police focus their resources on

Responding to emergencies will always be a top priority for Nottinghamshire Police, but beyond this, on what activity would you most like to see the police focus their resources over the coming year?



67% of respondents would prefer to contact their local policing team by phone if they had a non-urgent issue

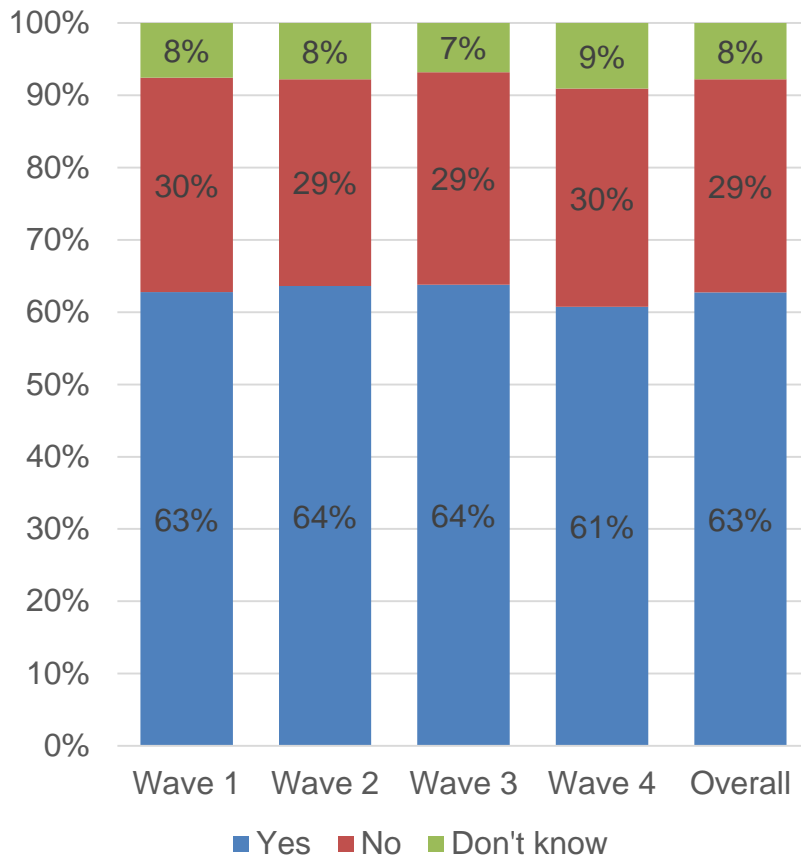
If you had a non-urgent issue that you wanted to let your local policing team know about, which of these would be your preferred way to make contact?



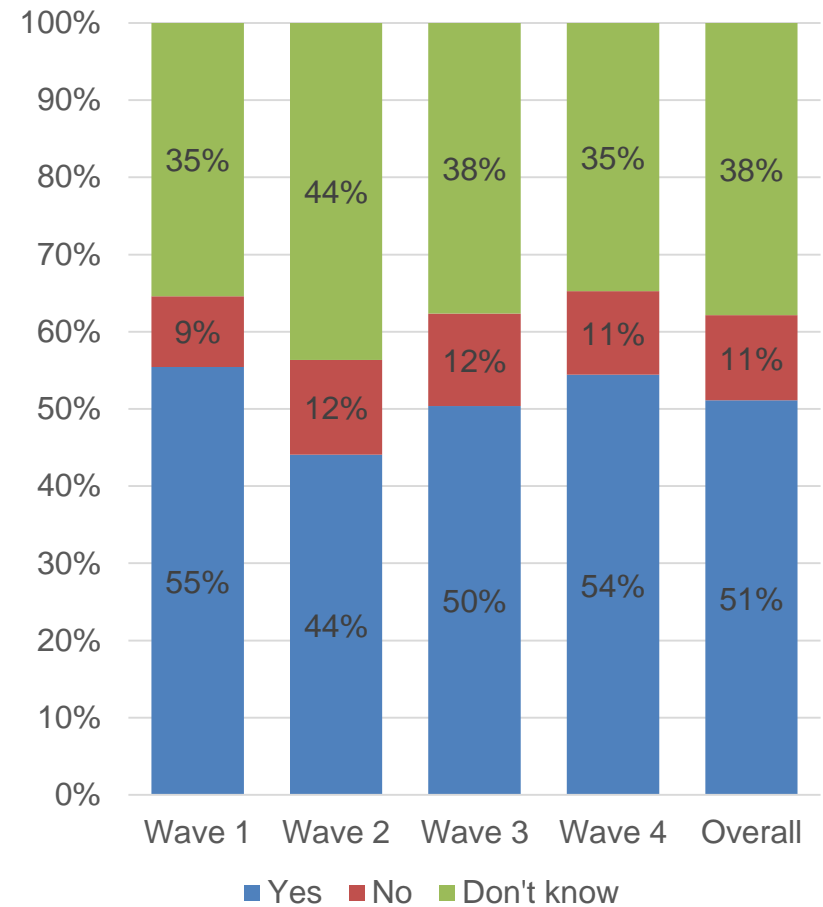
Base: Wave 1 = 1,053, Wave 2 = 1,069, Wave 3 = 1,050, Wave 4 = 1,055 Q: If you had a non-urgent issue that you wanted to let your local policing team know about, which of these would be your preferred way to make contact?

63% of respondents were aware of the level of police funding cuts. Half of respondents felt that funding cuts have affected policing in their area.

Before today, were you aware of the level of police funding cuts over recent years?



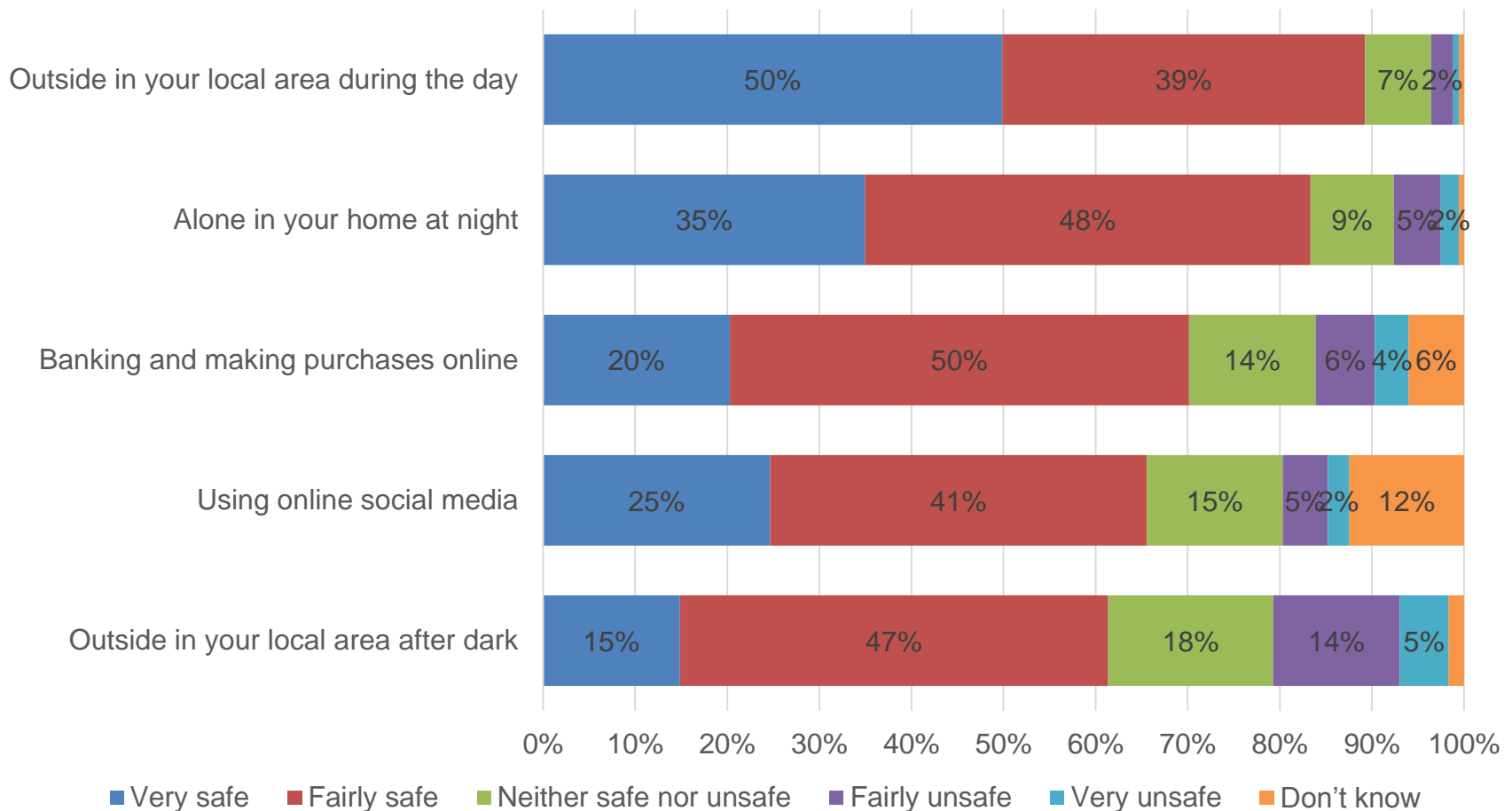
Do you feel that funding cuts have affected policing in your area?



Base: Wave 1 = 1,056, Wave 2 = 1,055, Wave 3 = 1,058, Wave 4 = 1,078 Q: Before today, were you aware of the level of police funding cuts over recent years? / Base: Wave 1 = 1,055, Wave 2 = 1,059, Wave 3 = 1,056, Wave 4 = 1,077 Q: Do you feel that funding cuts have affected policing in your area?

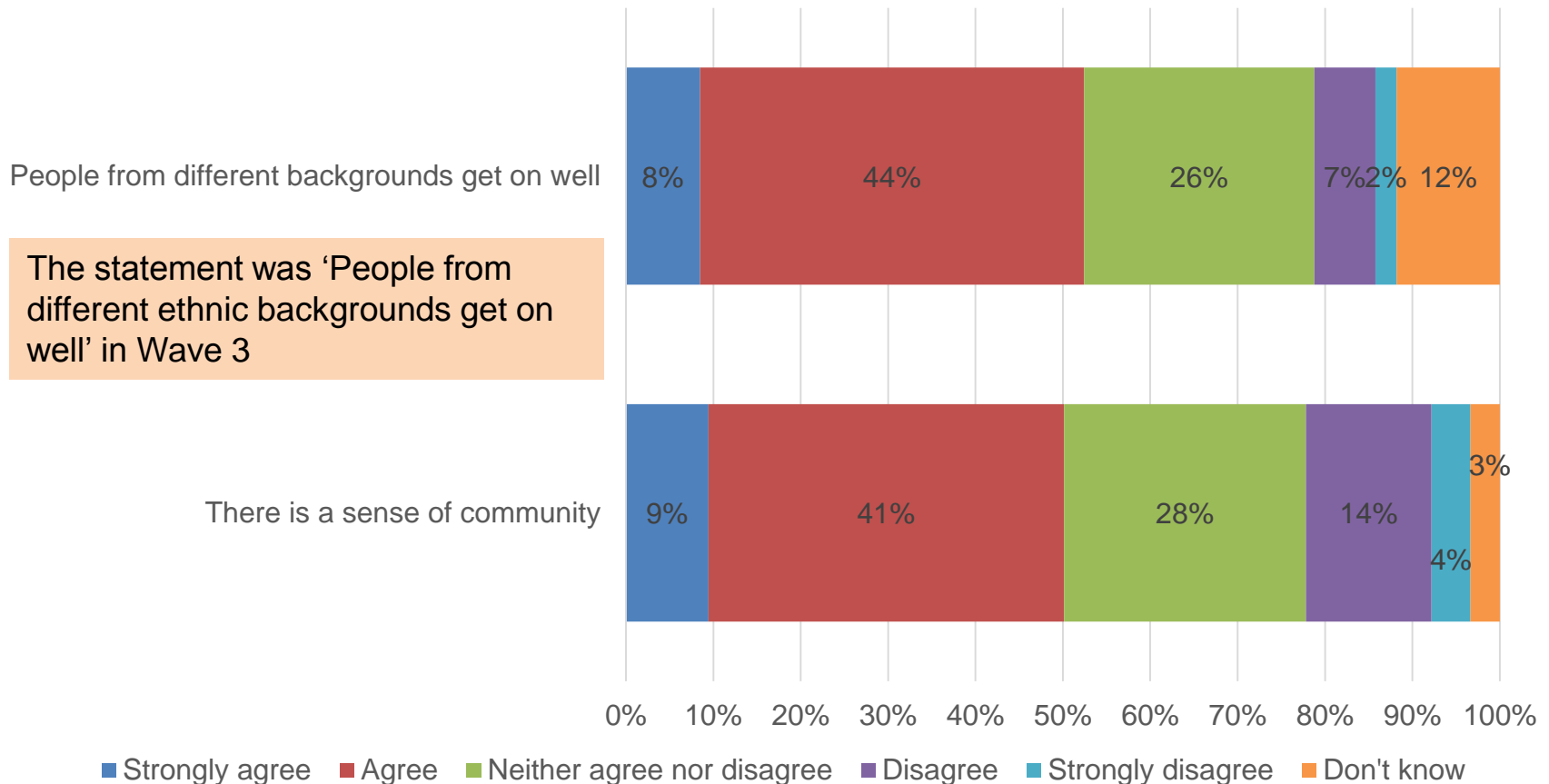
89% of respondents feel very or fairly safe outside in their local area during the day – this falls to 61% when outside in their local area after dark

Please say how safe or unsafe you generally feel in the following situations: Wave 3 & 4



52% agree that people from different backgrounds get on well and a half agree that there is a sense of community where they live

Please say how much you agree or disagree with each of the following statements about the area where you live. Would you say that in your local area: Wave 3 & 4



Overall, 46% of respondents would be prepared to pay more council tax towards policing, compared to 34% that would not

Households in Nottinghamshire pay, on average, £195 a year towards policing as part of their Council Tax (Band D properties). To what extent would you be prepared to pay more?

