

Nottinghamshire PCC Police and Crime Survey – 2018-19 Quarter 2

October 2018

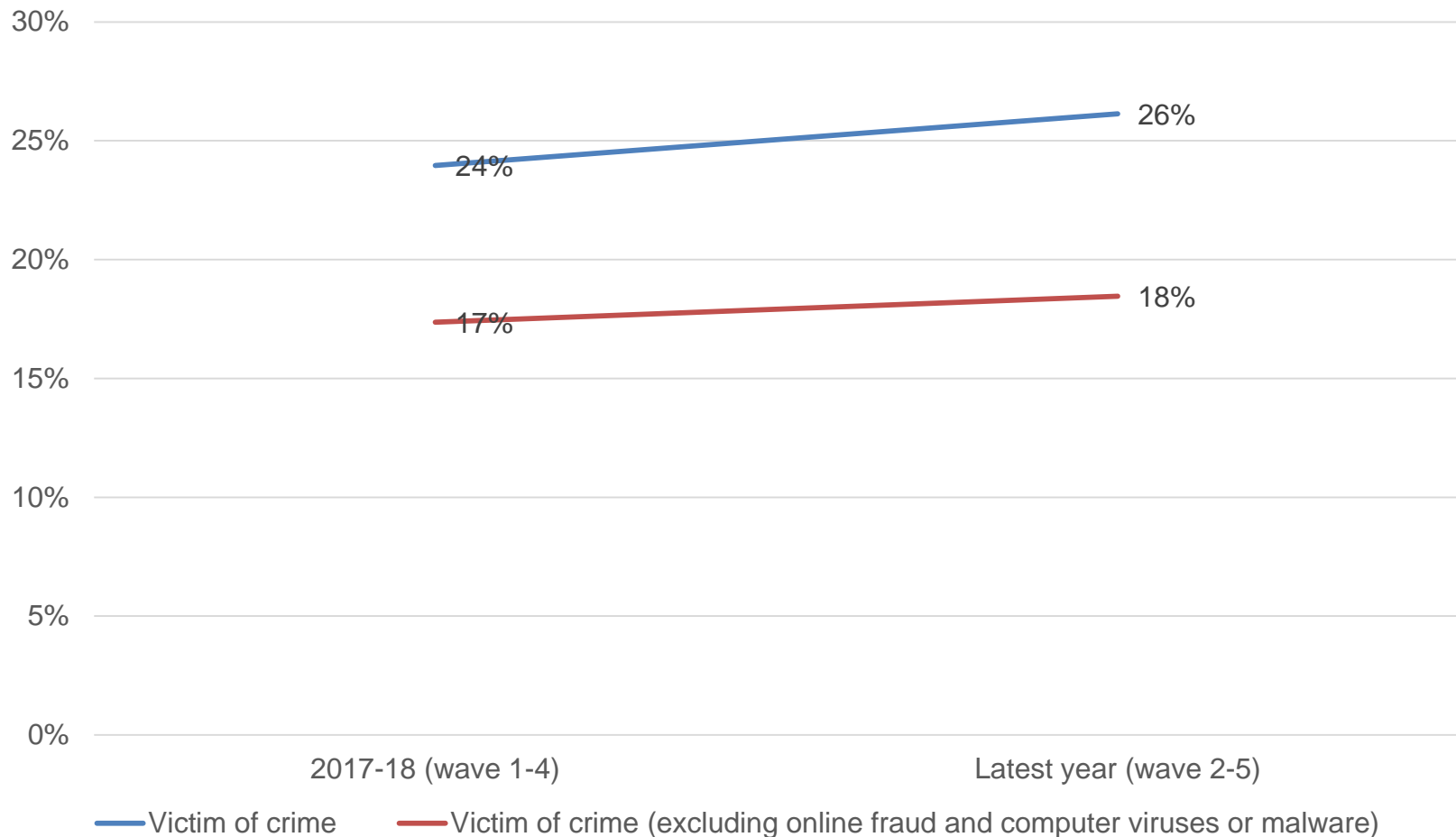
Introduction and Methodology

- ❑ This short presentation gives the 'top-line' results from the 2nd quarter of the 2018/19 Nottinghamshire Police and Crime Survey (wave 5) conducted by Information by design for Nottinghamshire PCC
- ❑ Fieldwork was conducted between 25th August and 30th September 2018.
- ❑ The survey was undertaken using an 'assisted self-completion' method, with a team of fieldwork staff working across selected LSOAs. 1 in 8 LSOAs were selected from each of the following geographic areas:
 - Nottingham
 - South Notts - comprising Gedling, Broxtowe and Rushcliffe
 - BNS – comprising Bassetlaw, Newark and Sherwood
 - Mansfield and Ashfield
- ❑ The achieved sample was 1,081 respondents broken down as follows:

Area	Local Authority	2017-18 (wave 1-4) Unweighted Count	2018-19 Q1 (wave 5) Unweighted Count	Latest year (wave 2-5) Unweighted Count*
Bassetlaw, Newark and Sherwood	Bassetlaw	577	95	566
	Newark and Sherwood	519	190	552
	Total	1096	285	1118
Mansfield and Ashfield	Ashfield	600	137	597
	Mansfield	500	166	537
	Total	1100	303	1134
Nottingham	Nottingham	1087	235	1051
South Nottinghamshi re	Broxtowe	378	39	317
	Gedling	368	107	367
	Rushcliffe	374	112	414
	Total	1120	258	1098

In the latest year, 26% of respondents had been victim of a crime in the last 12 months; slightly higher than in 2017-18, but reduces to 18% when online fraud and computer misuse are excluded.

In the last 12 months, have you personally been a victim of crime?

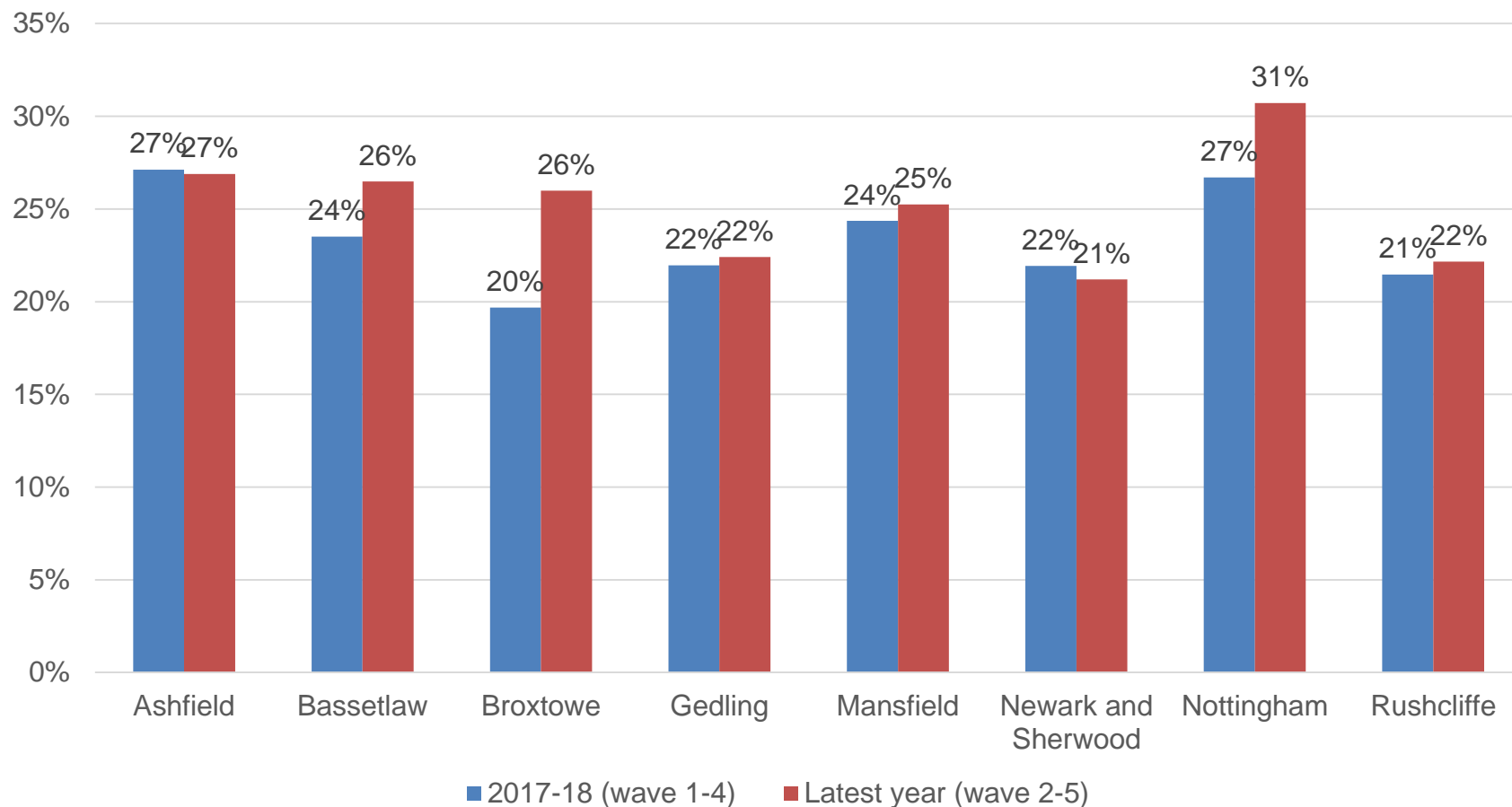


Base: 2017-18 = 4,255, Last 12 months = 4,273

Q: In the last 12 months, have you personally been a victim of any of the following crime types?

In the latest year, respondents from Nottingham were most likely to have been a victim of crime and respondents from Newark and Sherwood were least likely to have been a victim of crime

In the last 12 months, have you personally been a victim of crime?

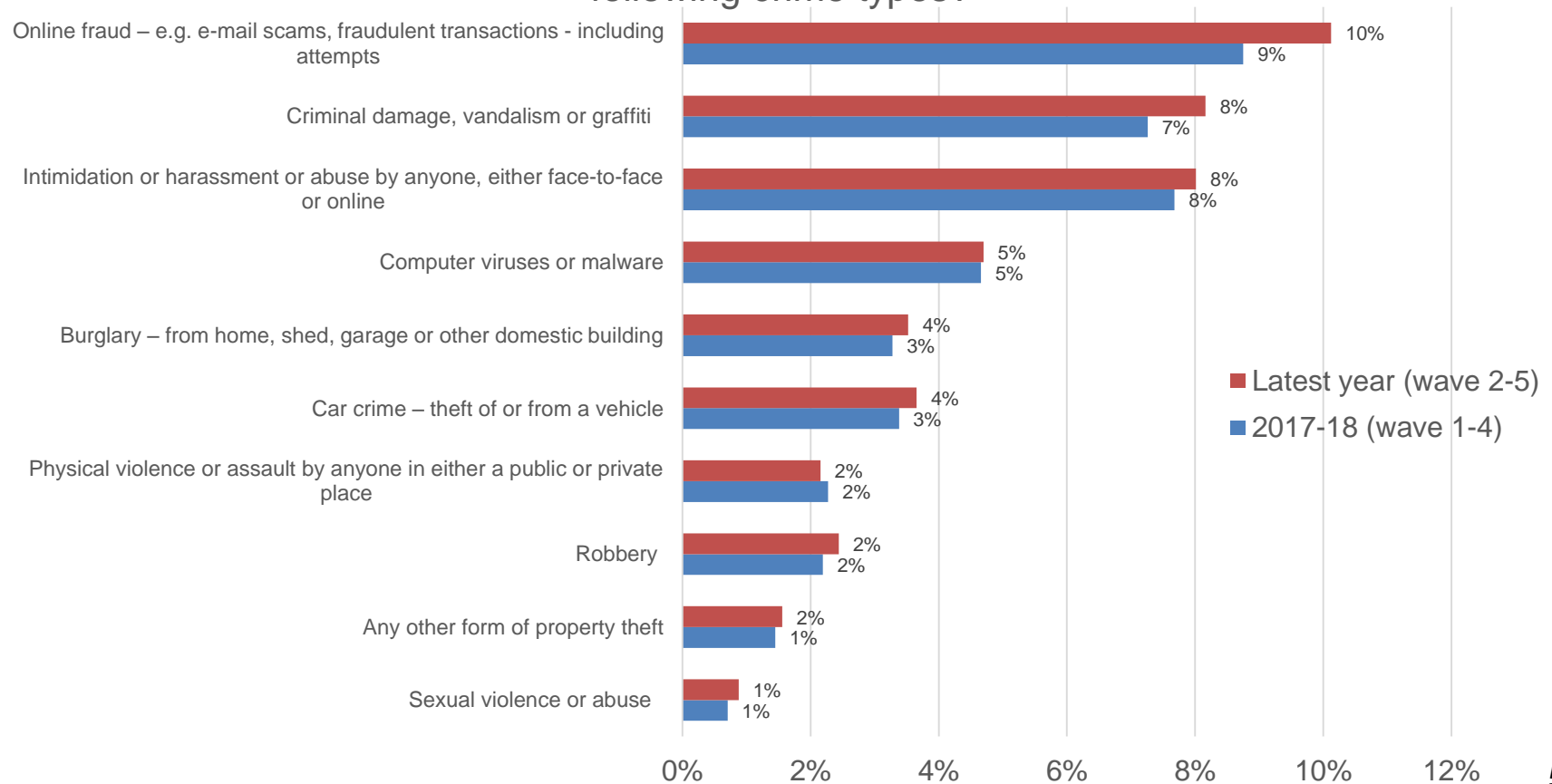


Base Last 12 months: Ashfield = 462, Bassetlaw = 432, Broxtowe = 430, Gedling = 443, Mansfield = 403, Newark & Sherwood = 457, Nottingham = 1,212, Rushcliffe = 434 Q: In the last 12 months, have you personally been a victim of any of the following crime types?

In the latest year, 26% of respondents had been victim of a crime; online fraud remains the most commonly experienced crime

- 3% of respondents had experienced hate related crime and 2% had experienced domestic violence/abuse related crime in the last 12 months

In the last 12 months, have you personally been a victim of any of the following crime types?

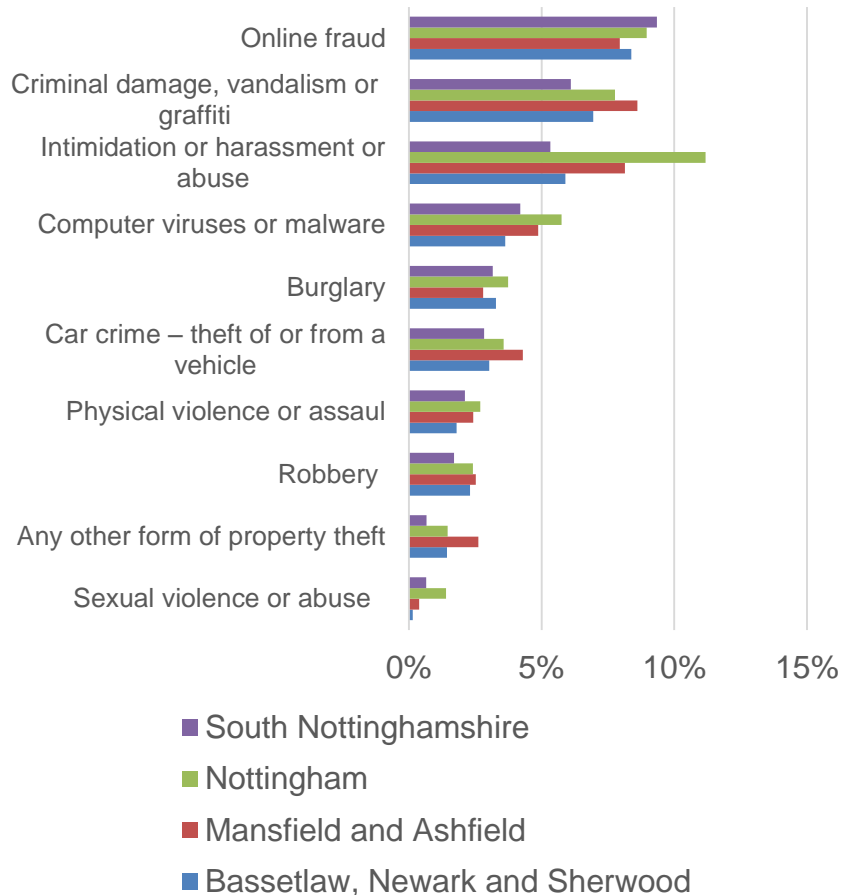


Base: 2017-18 = 4,255, Last 12 months = 4,273

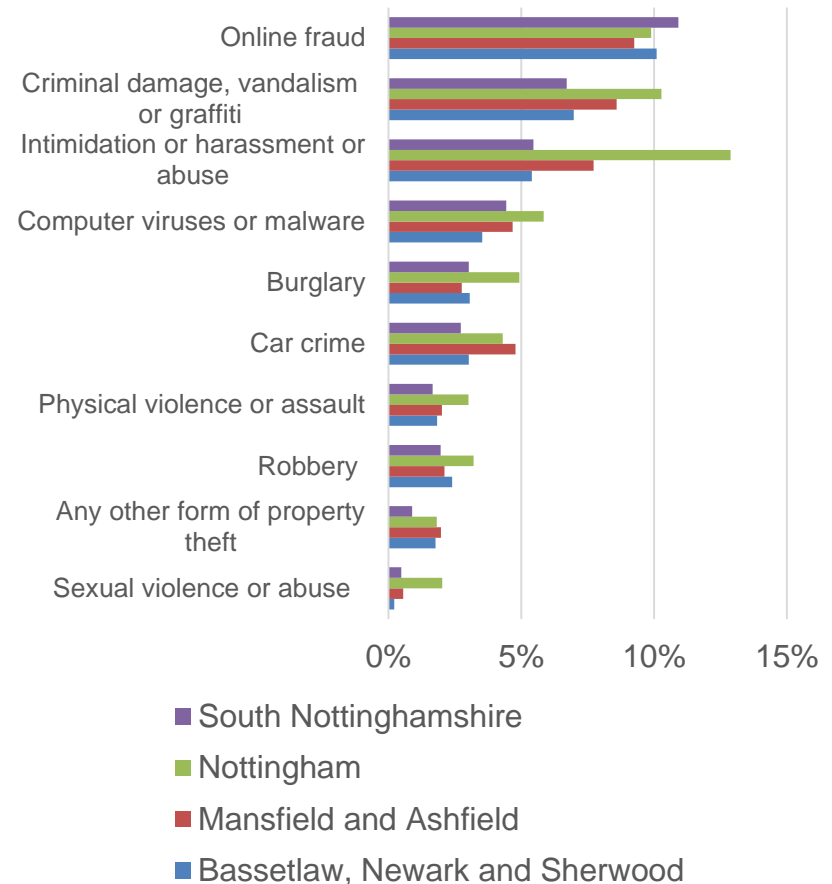
Q: In the last 12 months, have you personally been a victim of any of the following crime types?

In the latest year, 24% of respondents from South Nottinghamshire, 24% from Bassetlaw, Newark and Sherwood, 26% from Mansfield and Ashfield and 31% from Nottingham had been victim of a crime

In the last 12 months, have you personally been a victim of any of the following crime types? – 2017-18 (wave 1-4)

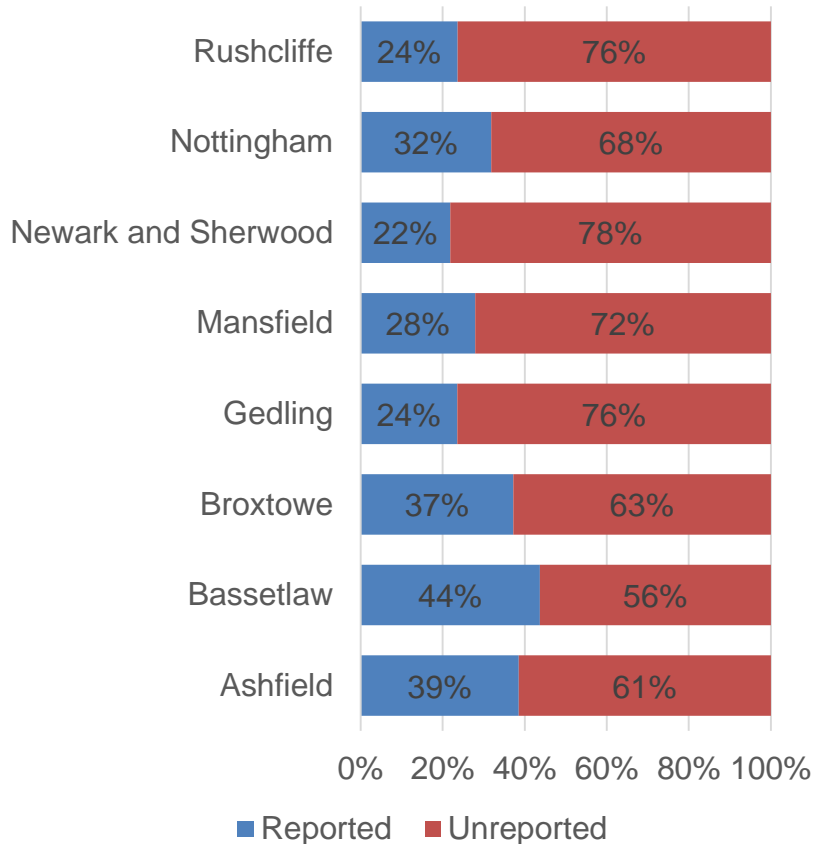


In the last 12 months, have you personally been a victim of any of the following crime types? – Latest year (wave 2-5)

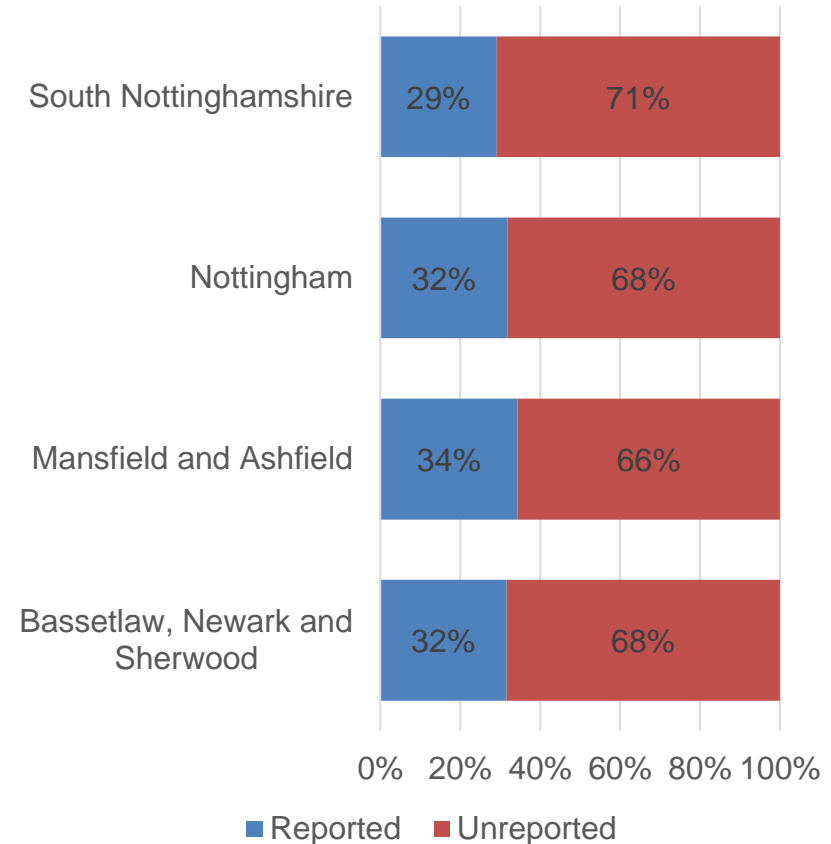


In the latest year, 34% of crimes in Mansfield and Ashfield, 32% of crimes in Nottingham, 32% of crimes in Bassetlaw, Newark and Sherwood and 29% of crimes in South Nottinghamshire had been reported

Proportion of reported and unreported crimes – Latest year (wave 2-5)

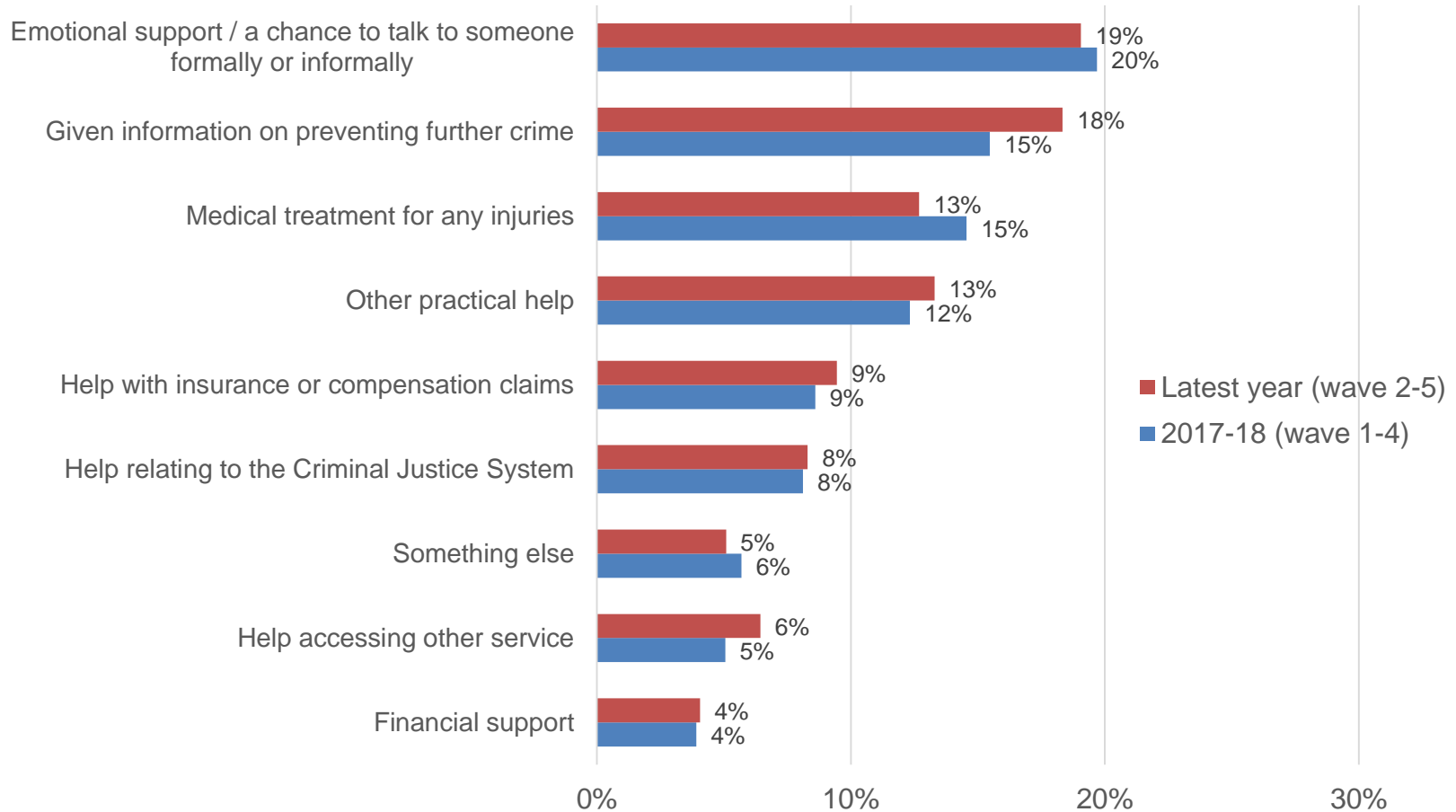


Proportion of reported and unreported crimes – Latest years (wave 2-5)



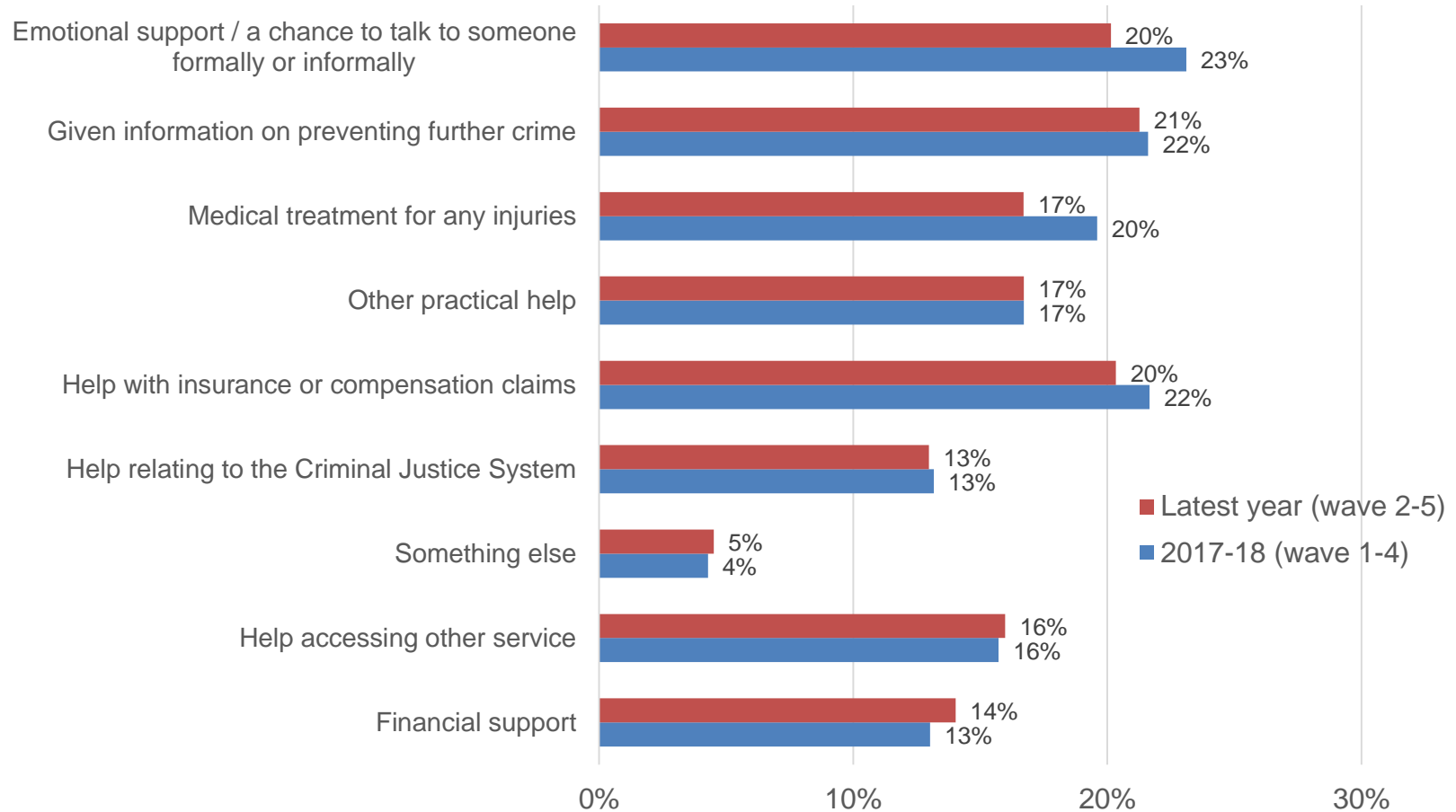
In the latest year, 40% of respondents who had been a victim of crime had received some form of information, advice or support

Did you receive any of the following types of information, advice or support when you were the victim of this crime?



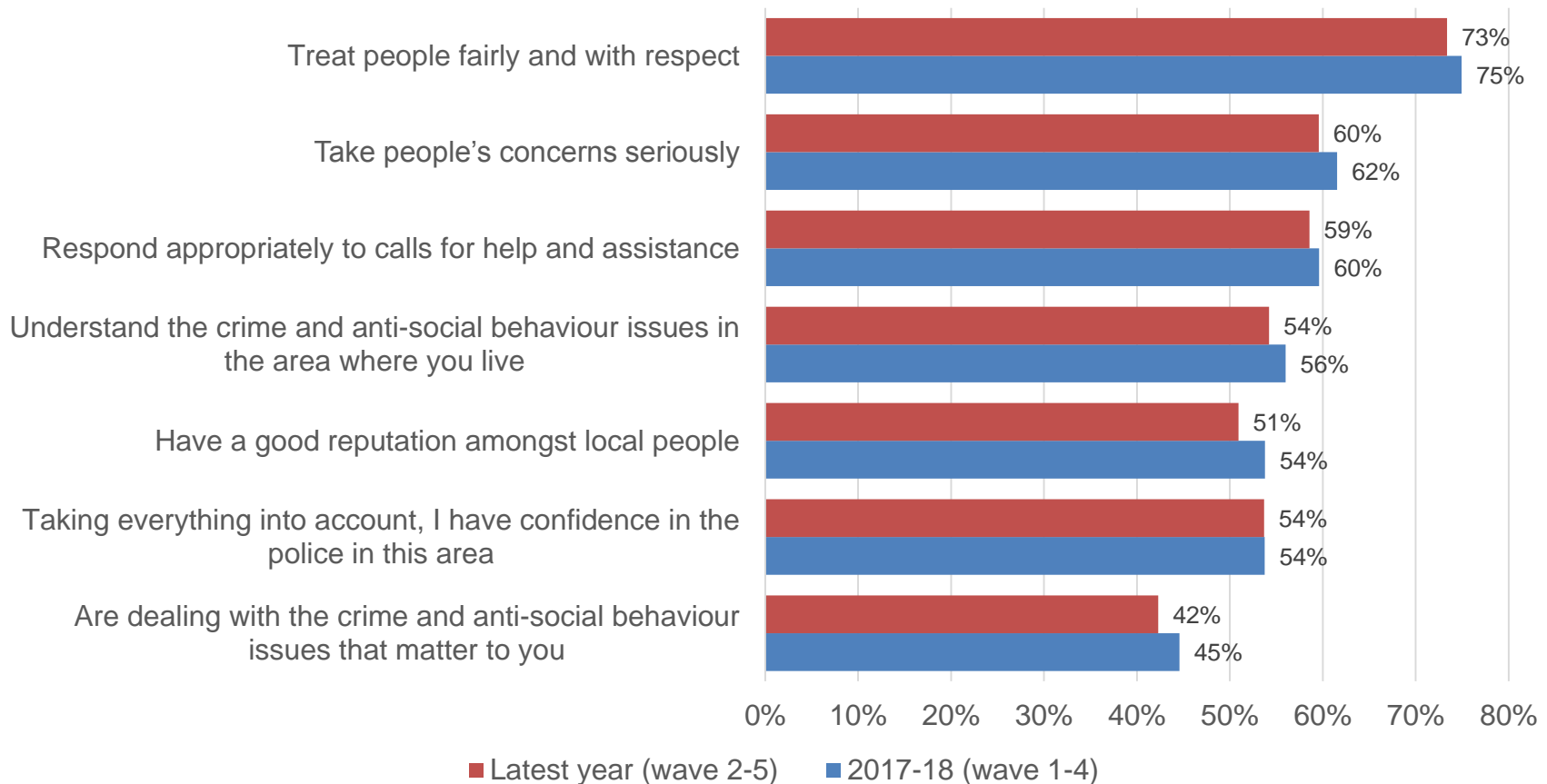
In the latest year, 42% of respondents who had been a victim of crime would have liked to have received some form of information, advice or support

Would you have liked to receive any of the following types of information, advice or support when you were the victim of this crime?



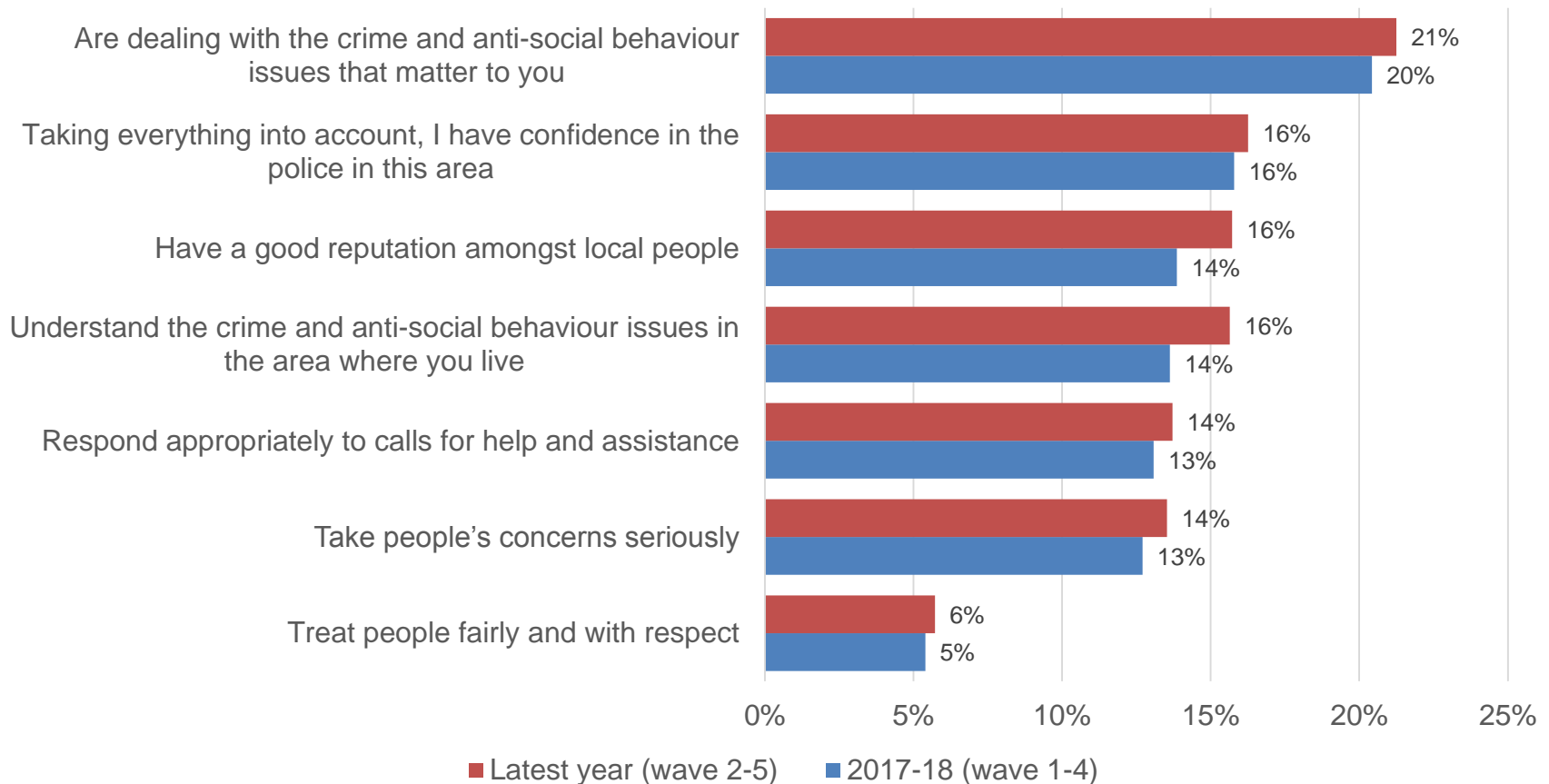
Excluding those who answered 'don't know', in the latest year 73% agreed that the police in their local area treat people fairly and with respect. Some small declines in agreement from 2017-18.

Please say how much you agree or disagree with each of the following statements about the police in your local area: - Strongly Agree & Agree – Excluding 'Don't know'



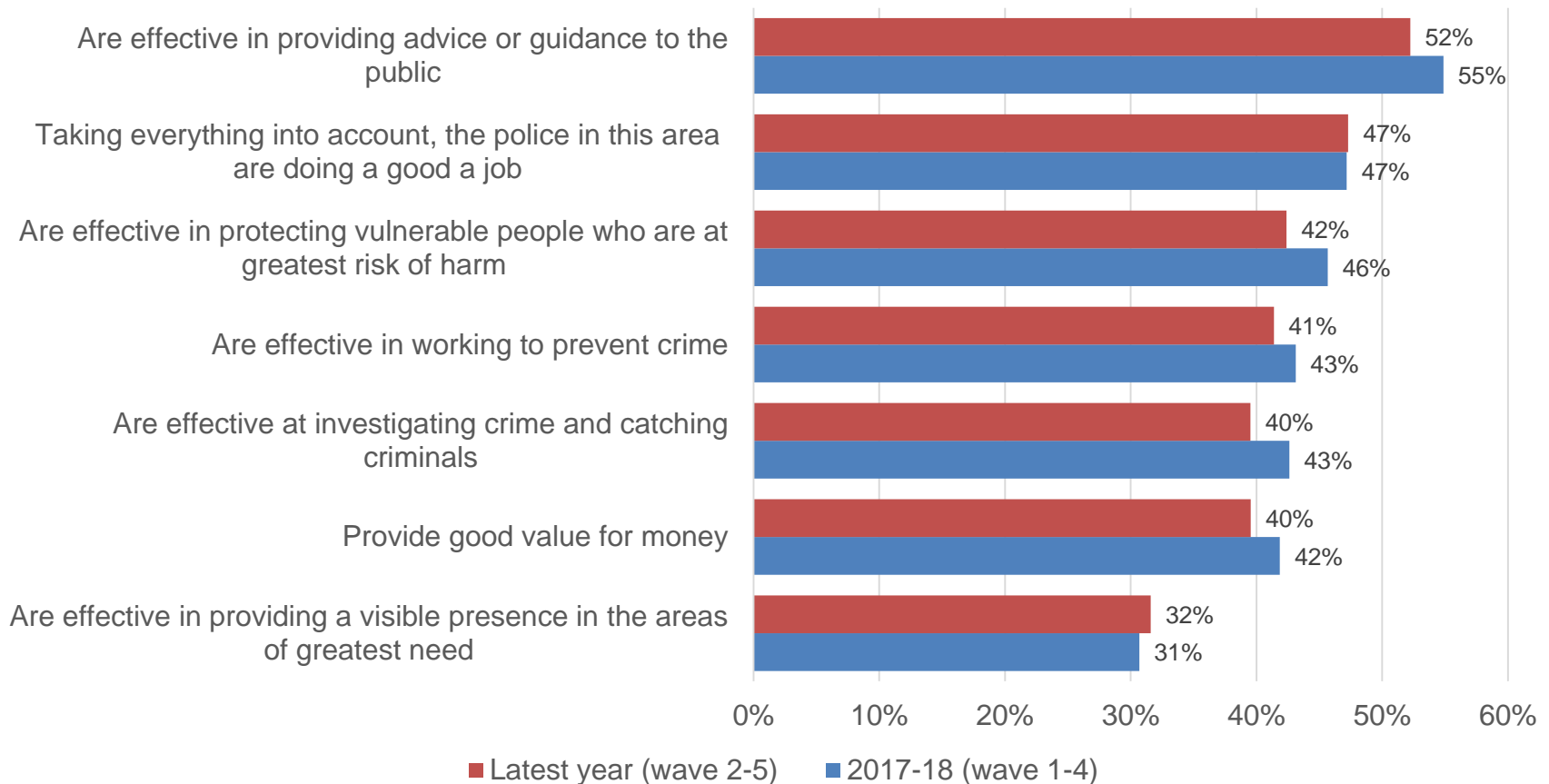
Excluding those who answered 'don't know', in the latest year 21% of respondents disagreed that the police in their local area are dealing with the crime and anti-social behavior issues that matter to them

Please say how much you agree or disagree with each of the following statements about the police in your local area: - Strongly Disagree & Disagree – Excluding 'Don't know'



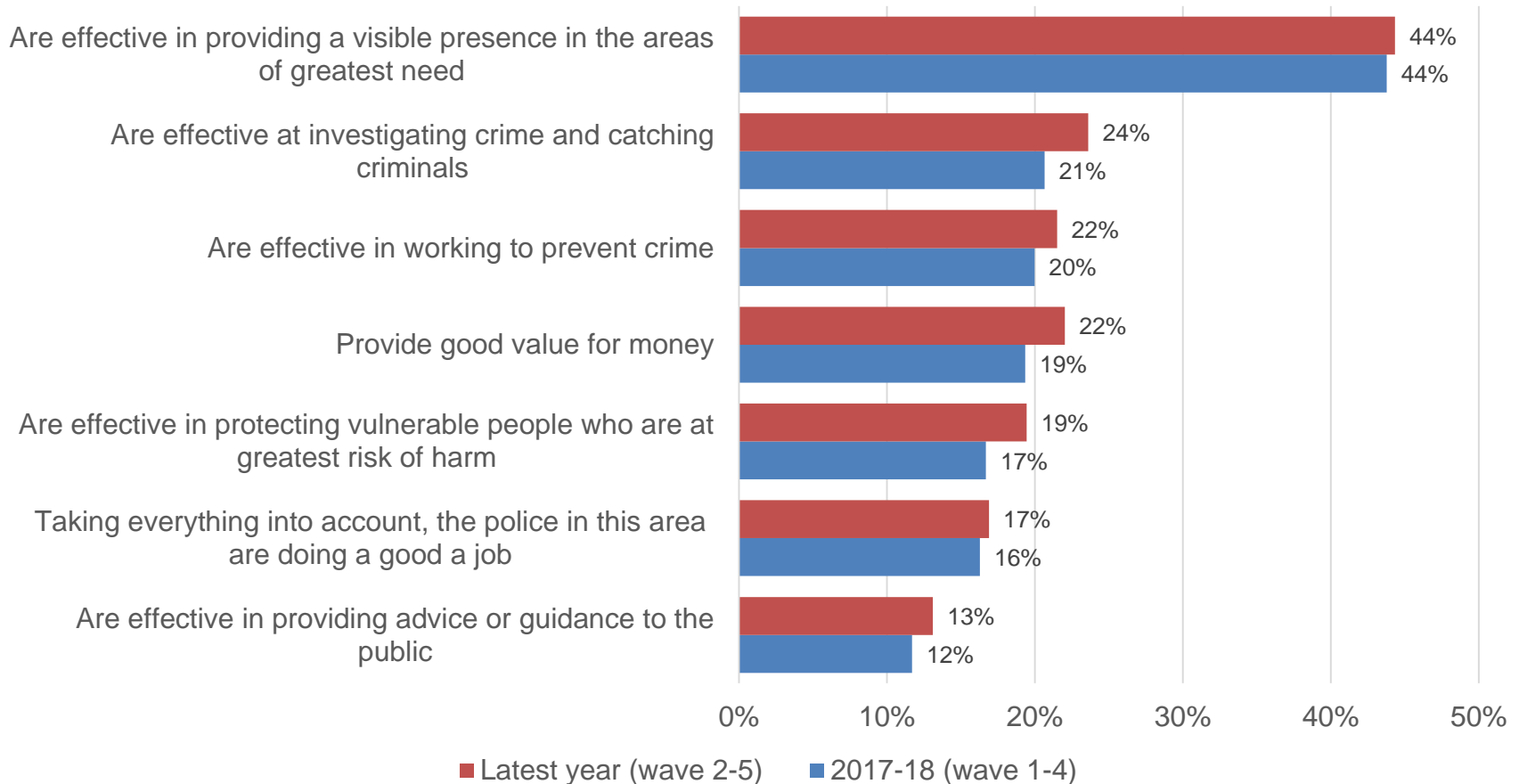
Excluding those who answered 'don't know', in the latest year 52% agreed that the police in their local area are effective in providing advice or guidance to the public; again some small declines from 2017-18

Please say how much you agree or disagree with each of the following statements about the police in your local area: - Strongly Agree & Agree – Excluding 'Don't know'



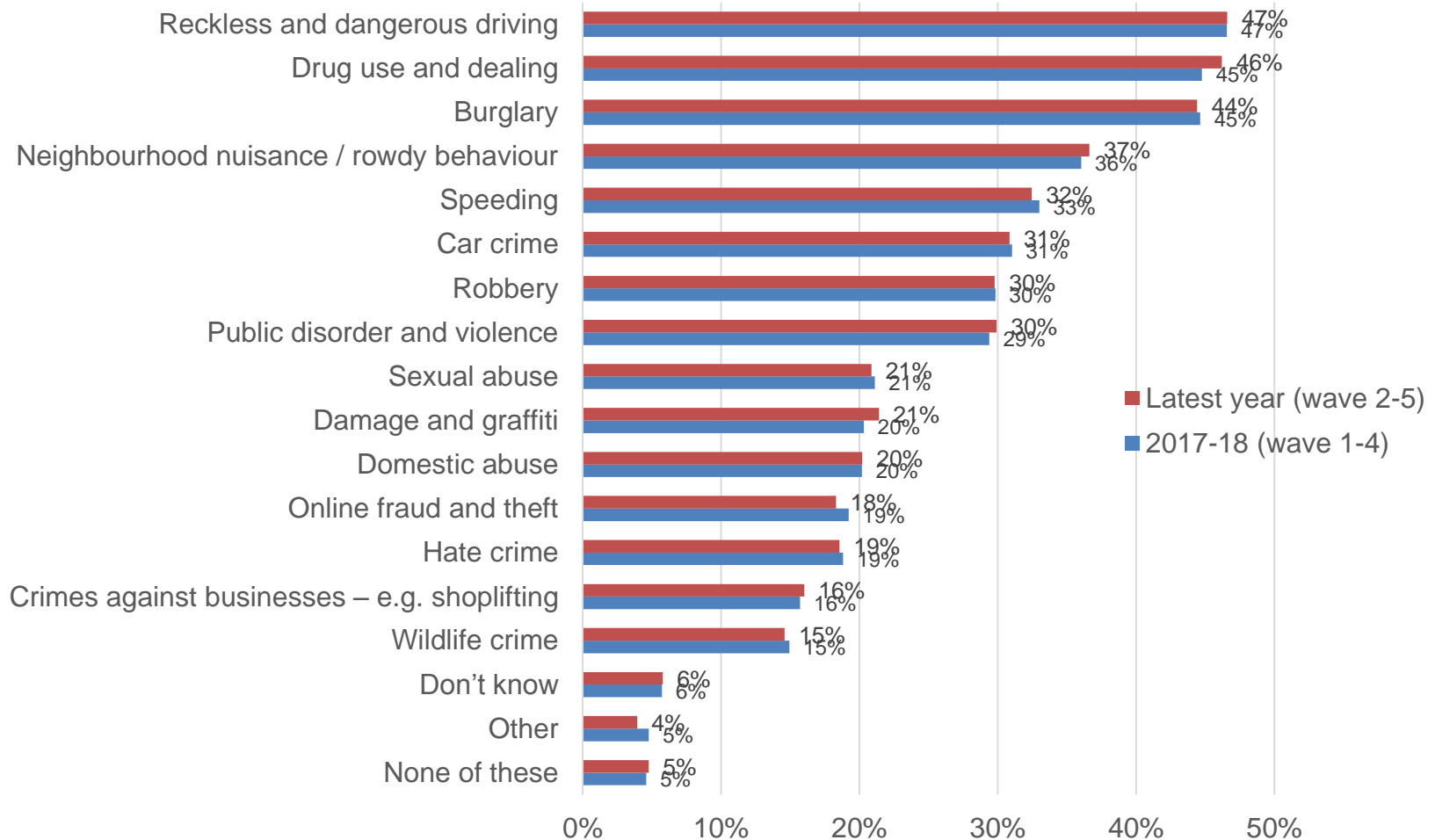
Excluding those who answered 'don't know', in the latest year 45% of respondents disagreed that the police in their local area are effective in providing a visible presence in the area of greatest need

Please say how much you agree or disagree with each of the following statements about the police in your local area: - Strongly Disagree & Disagree – Excluding 'Don't know'



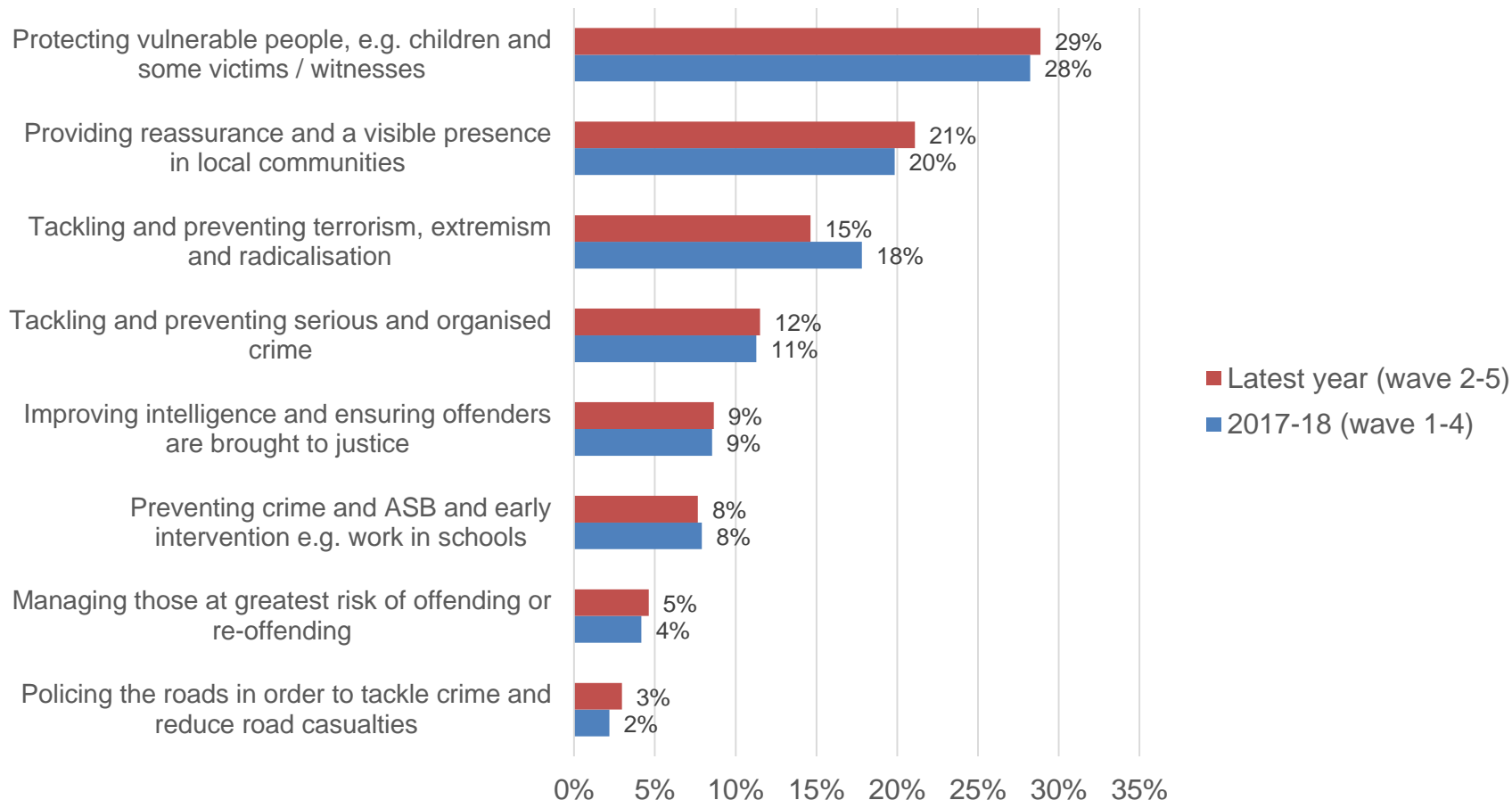
Reckless and dangerous driving, drug use and dealing and burglary are the top crime and ASB issues respondents would like to see tackled in both the latest year and 2017-18.

Are there any specific crime or anti-social behaviour issues that you would like to see the police and other agencies do more to tackle in your area?



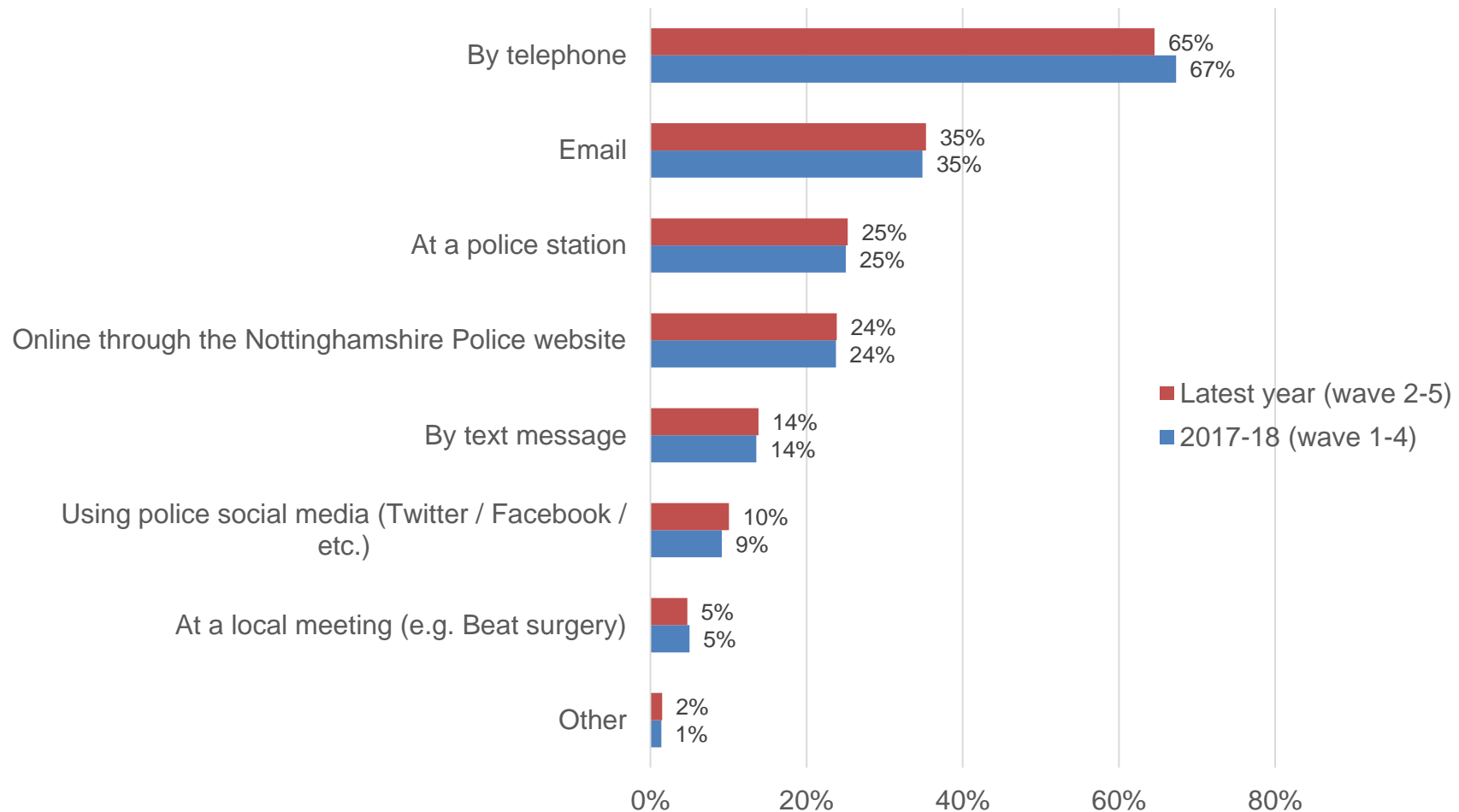
In the latest year, 29% of respondents ranked protecting vulnerable people as the aspect they would most like to see the police focus their resources on

Responding to emergencies will always be a top priority for Nottinghamshire Police, but beyond this, on what activity would you most like to see the police focus their resources over the coming year?



In the latest year, 65% of respondents would prefer to contact their local policing team by phone if they had a non-urgent issue – a small reduction from 2017-18

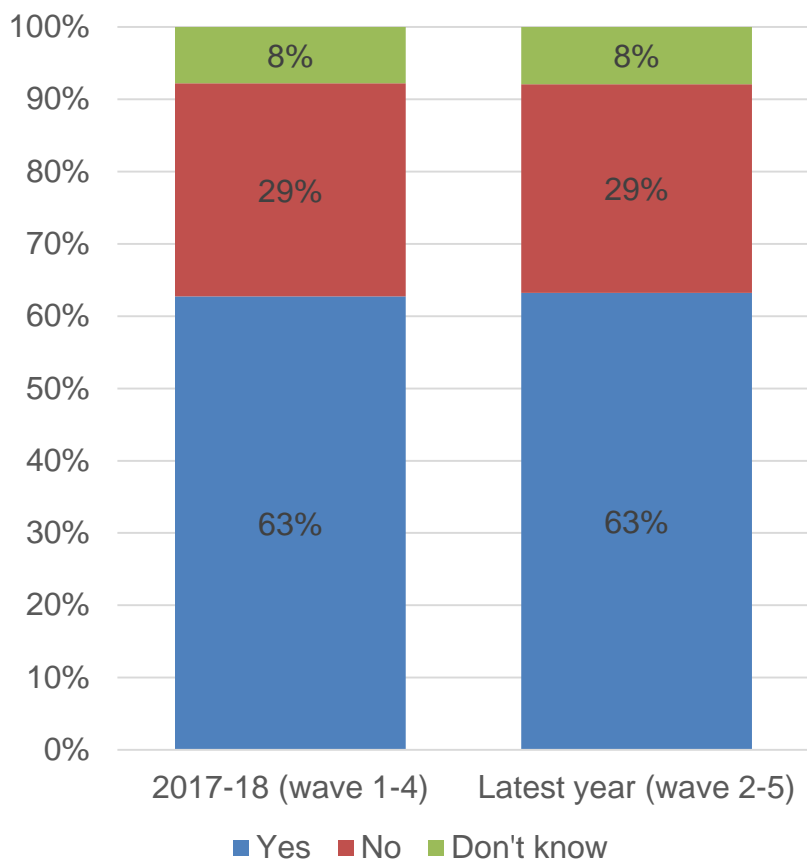
If you had a non-urgent issue that you wanted to let your local policing team know about, which of these would be your preferred way to make contact?



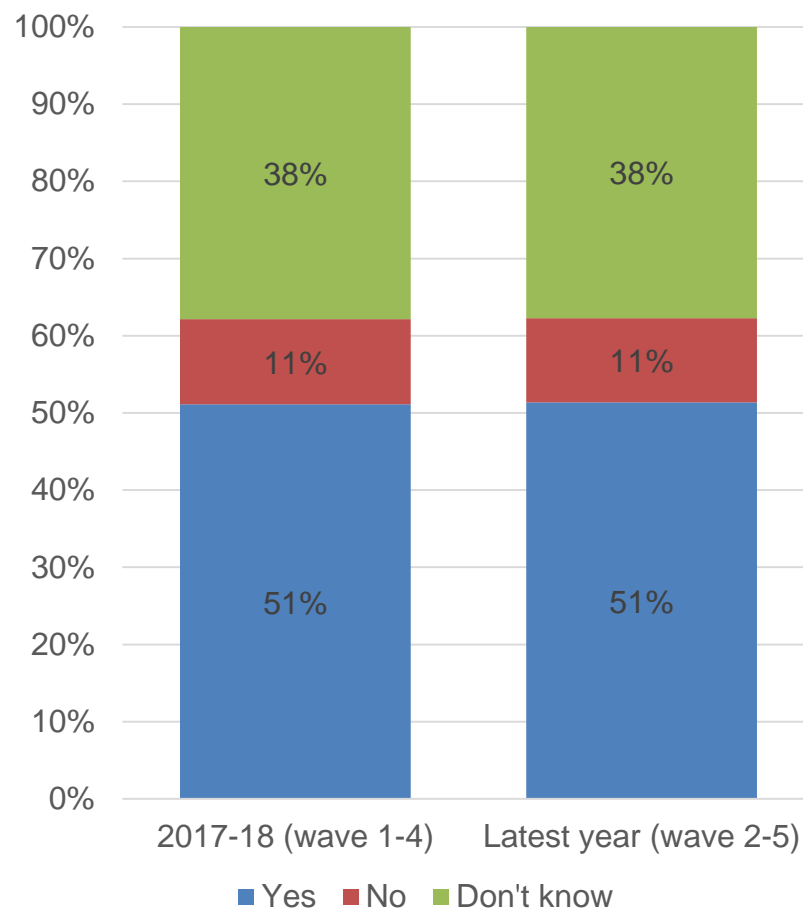
Base: 2017-18 = 4,227, Last 12 months = 4,190 Q: If you had a non-urgent issue that you wanted to let your local policing team know about, which of these would be your preferred way to make contact?

In the latest year, 63% of respondents were aware of the level of police funding cuts and 51% felt that funding cuts have affected policing in their area. Similar to 2017-18.

Before today, were you aware of the level of police funding cuts over recent years?



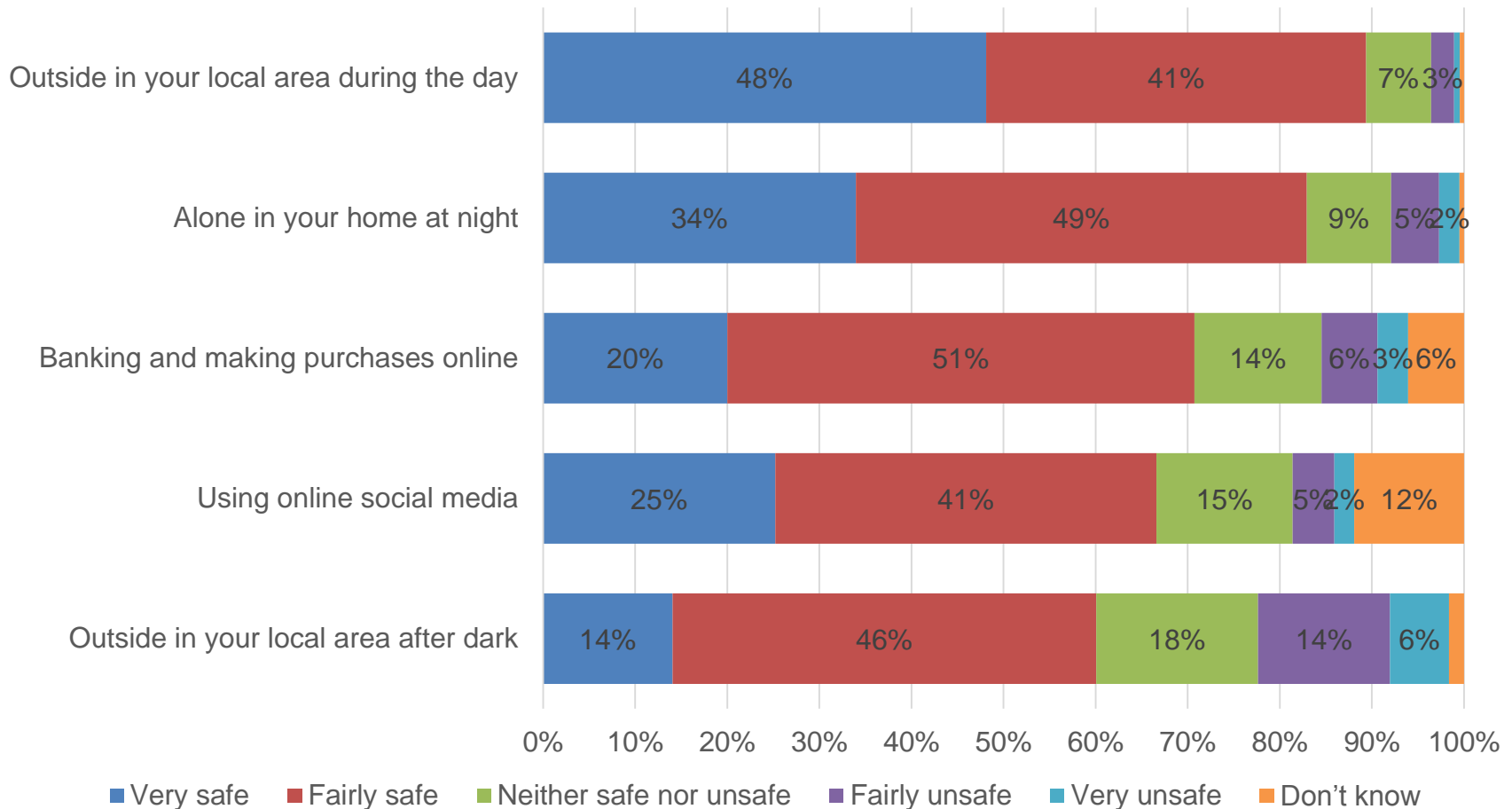
Do you feel that funding cuts have affected policing in your area?



Base: 2017-18 = 4,247, Last 12 months = 4,187 Q: Before today, were you aware of the level of police funding cuts over recent years? / Base: 2017-18 = 4,238, Last 12 months = 4,178 Q: Do you feel that funding cuts have affected policing in your area?

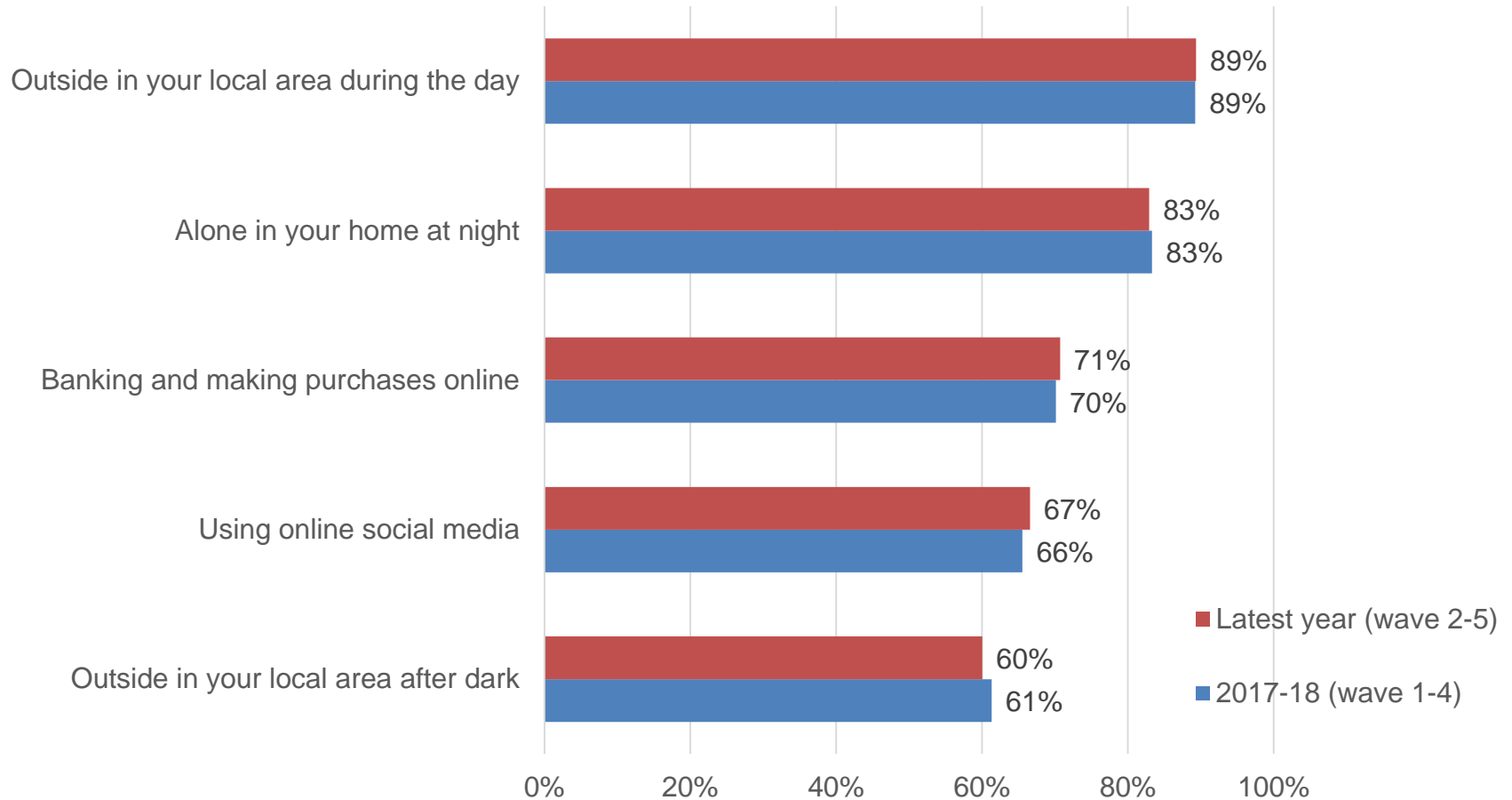
In the latest year, 89% of respondents feel very or fairly safe outside in their local area during the day – this falls to 60% when outside in their local area after dark

Please say how safe or unsafe you generally feel in the following situations: Latest year (wave 2-5)



There are small changes in the perceptions of community safety between the latest year and 2017-18

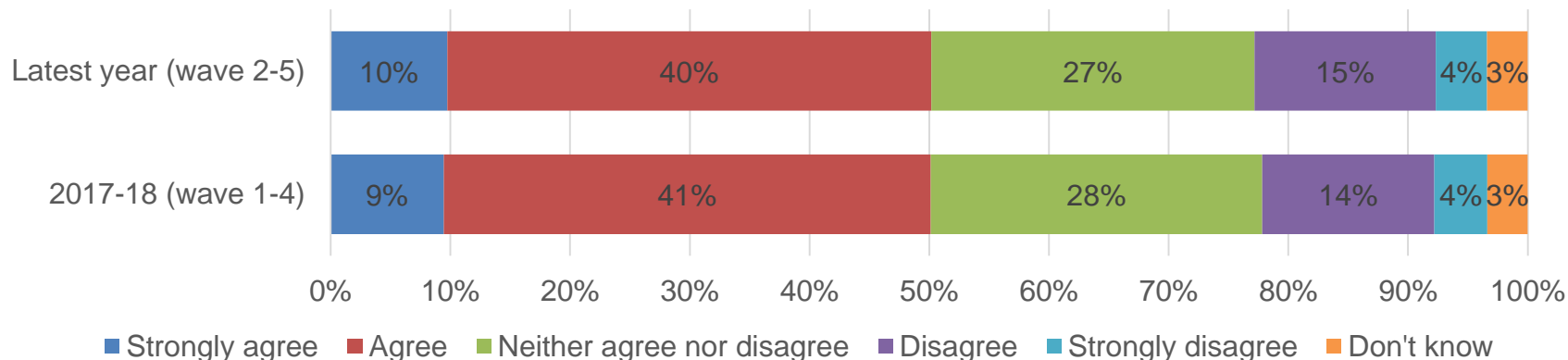
Please say how safe or unsafe you generally feel in the following situations: Very & fairly safe



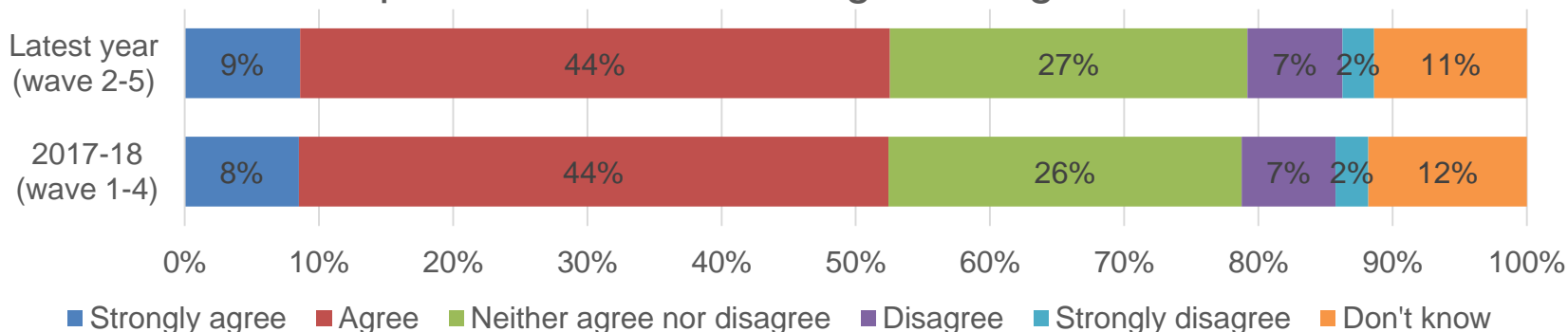
Base: 2017-18 Q3-4 = 1,965 - 2,072, Last 12 months = 2,893 – 3,063 Q: Please say how safe or unsafe you generally feel in the following situations:

In the latest year, 53% agree that people from different backgrounds get on well and a half agree that there is a sense of community where they live. The results are similar to 2017-18.

There is a sense of community

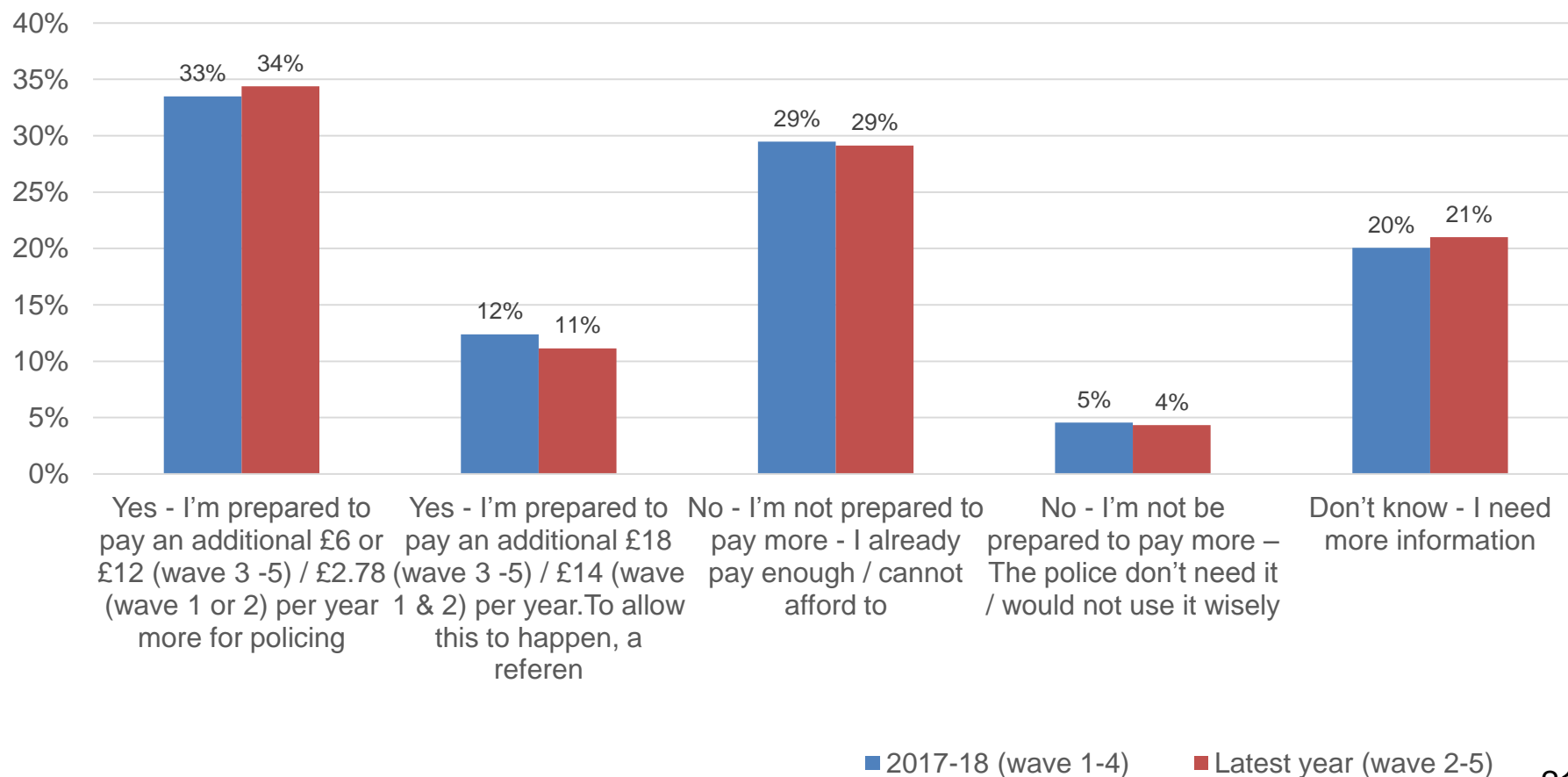


People from different backgrounds get on well



In the latest year, 46% of respondents would be prepared to pay more council tax towards policing, compared to 33% that would not. This is similar to 2017-18 with a slight change in the amount prepared to pay.

Households in Nottinghamshire pay, on average, £195 a year towards policing as part of their Council Tax (Band D properties). To what extent would you be prepared to pay more?



Base: 2017-18 = 4,145, Last 12 months = 4,132 Q: Households in Nottinghamshire pay, on average, £195 a year towards policing as part of their Council Tax (Band D properties). To what extent would you be prepared to pay more?