

Nottinghamshire Police and Crime Survey 2019-20 Quarter 2

September 2019

Introduction and Methodology

- ❑ This presentation gives the 'top-line' results from the 2nd quarter of the 2019/20 Nottinghamshire Police and Crime Survey conducted by Information by Design on behalf of the Nottinghamshire PCC
- ❑ Fieldwork was conducted between 18th August and 21st September 2019.
- ❑ The survey was undertaken using an 'assisted self-completion' method, with a team of fieldwork staff working across selected LSOAs. One in eight LSOAs were selected from each of the following geographic areas:
 - Nottingham
 - South Notts - comprising Gedling, Broxtowe and Rushcliffe
 - BNS – comprising Bassetlaw, Newark and Sherwood
 - Mansfield and Ashfield

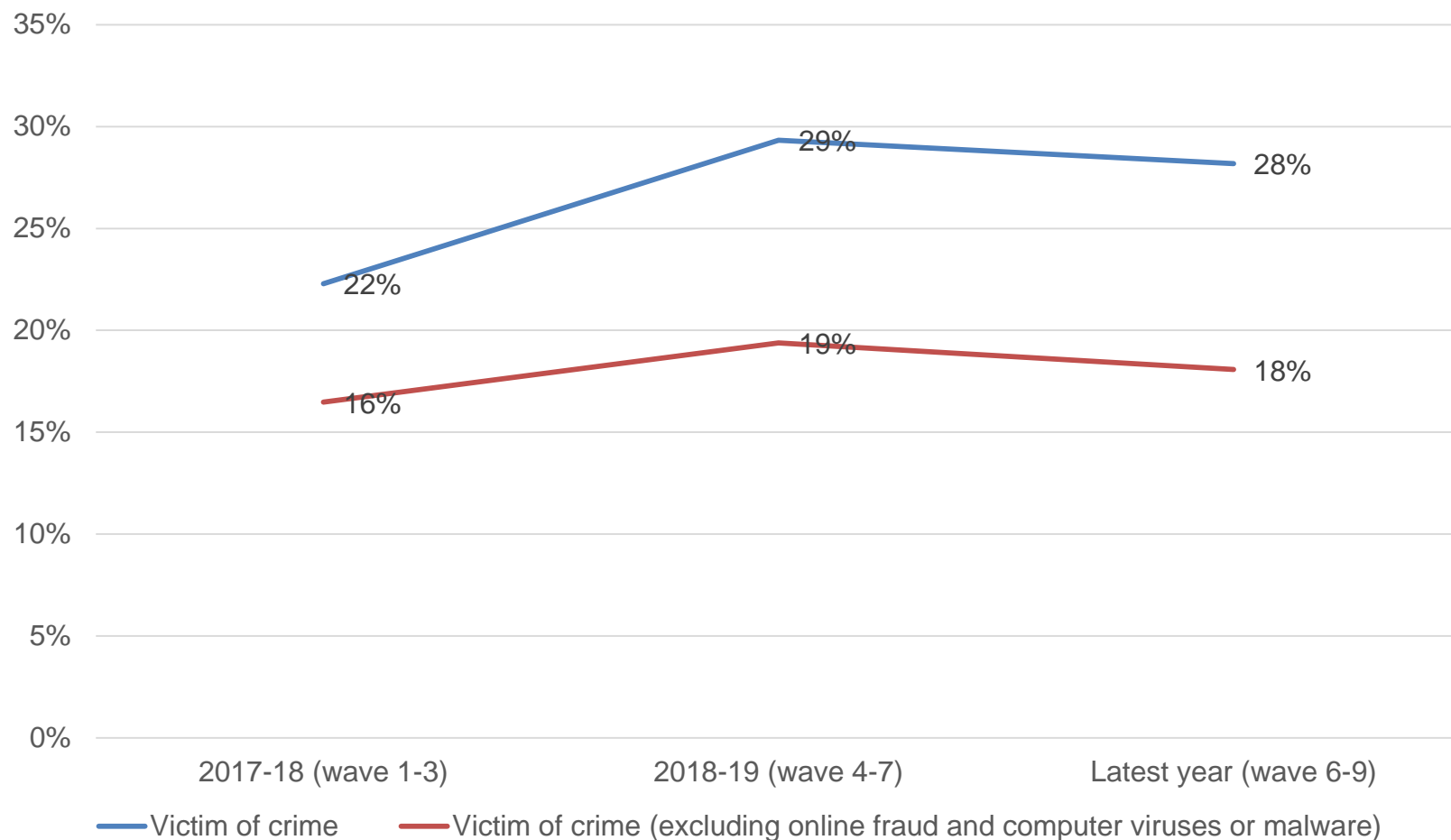
Respondents

Area	Local Authority	2017-18 (wave 1-3) Unweighted Count	2018-19 (wave 4-7) Unweighted Count	Latest year (wave 6-9) Unweighted Count
Bassetlaw, Newark and Sherwood	Bassetlaw	404	533	509
	Newark and Sherwood	417	548	549
	Total	821	1081	1058
Mansfield and Ashfield	Ashfield	473	568	559
	Mansfield	340	563	519
	Total	813	1131	1078
Nottingham	Nottingham	813	1066	1092
South Nottinghamshire	Broxtowe	261	358	383
	Gedling	273	411	418
	Rushcliffe	301	336	298
	Total	835	1105	1099

* Data is shown in financial years. 2017-18 is the partial year comprising waves 1-3

In the latest year, 28% of respondents had been victim of a crime in the last 12 months. This reduces to 18% when online fraud and computer misuse are excluded.

In the last 12 months, have you personally been a victim of crime?

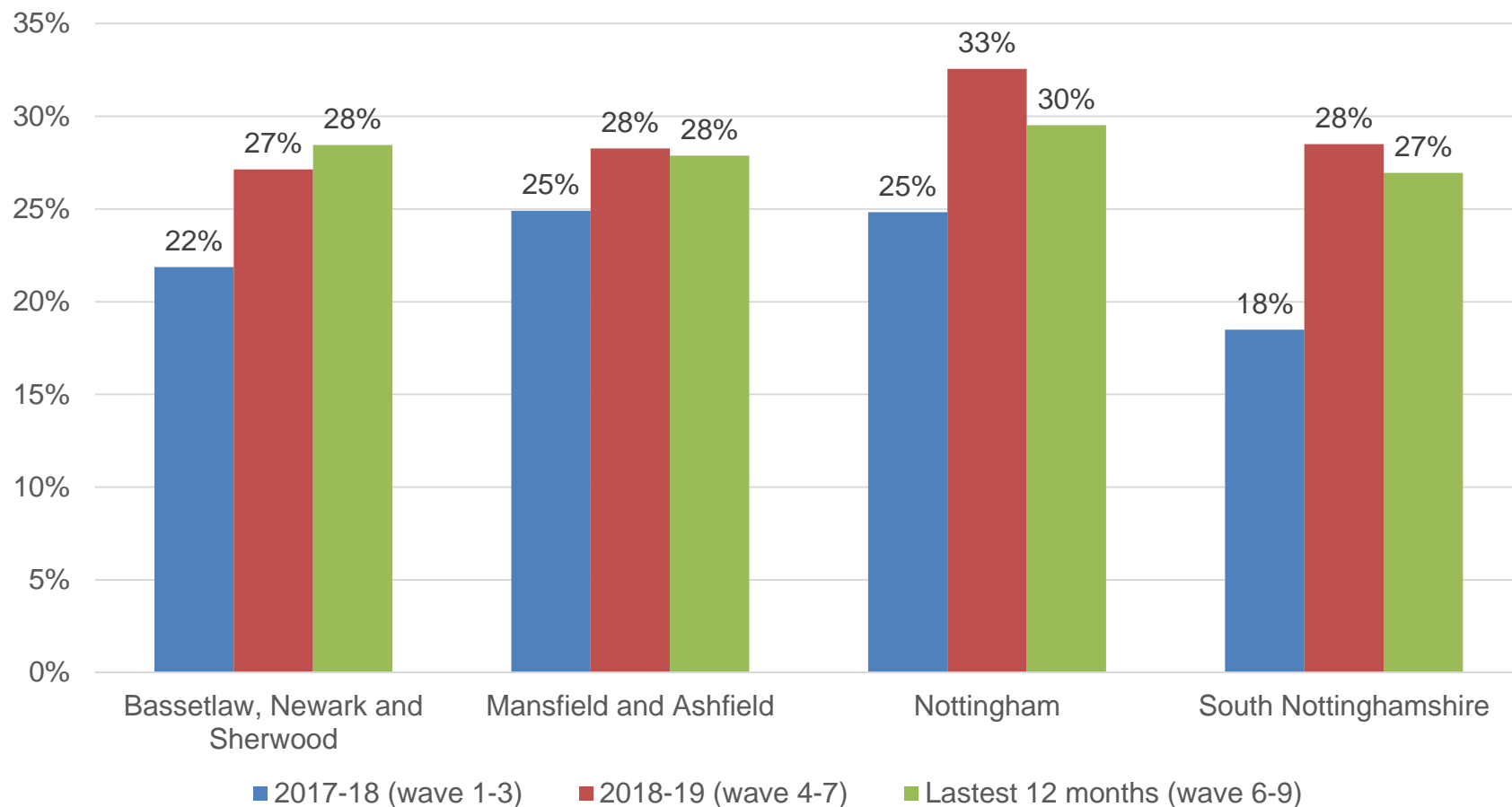


Base: 2017-18 = 3,152, 2018 – 19 = 4,251, Last 12 months = 4,186

Q: In the last 12 months, have you personally been a victim of any of the following crime types?

In the latest period, respondents from Nottingham were most likely to have been a victim of crime; the increase between 2017-18 and the latest 12 months is highest for South Nottinghamshire

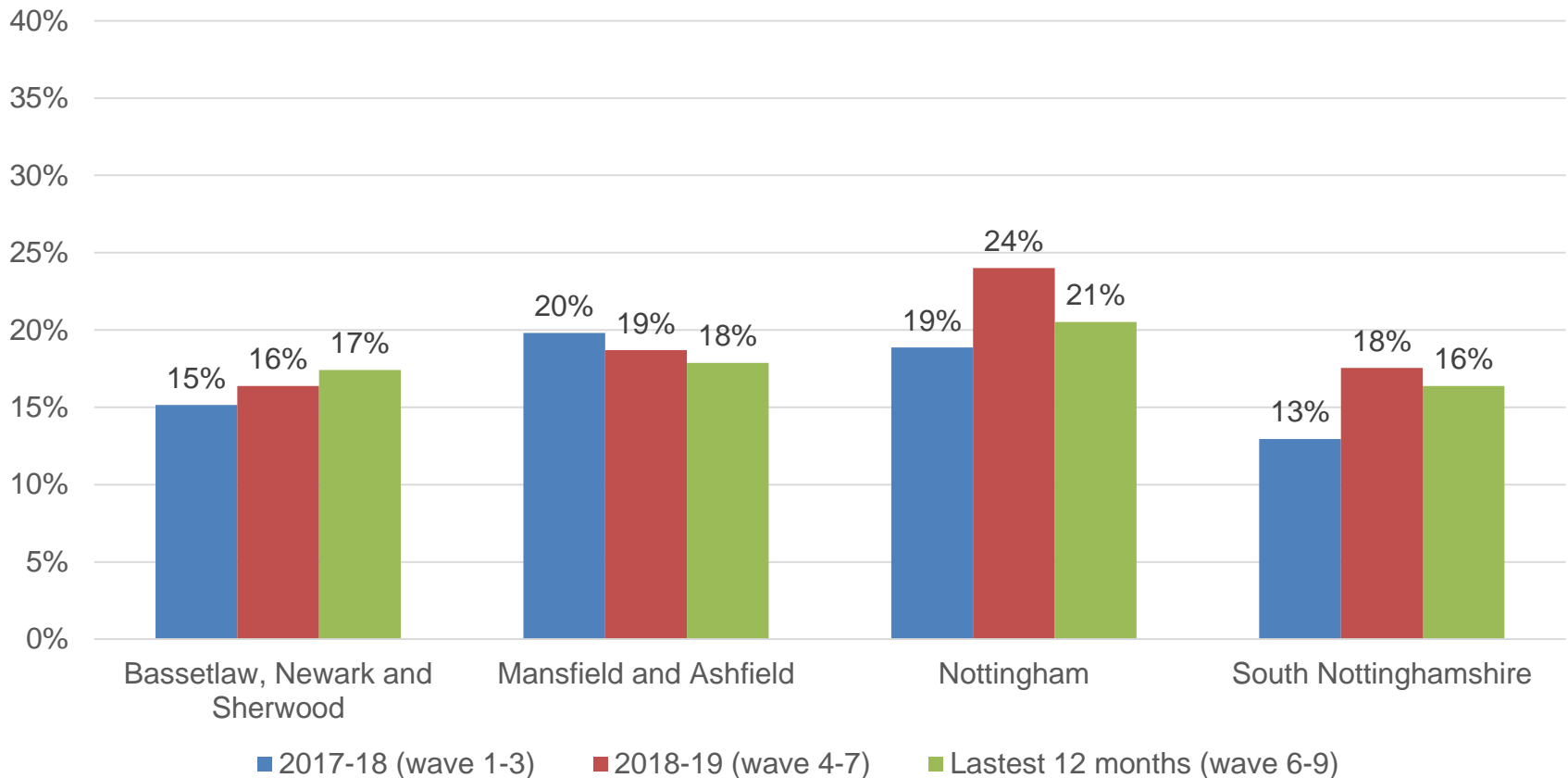
In the last 12 months, have you personally been a victim of crime?



Base Last 12 Months: Bassetlaw, Newark & Sherwood = 884, Mansfield and Ashfield = 845, Nottingham = 1,185, South Nottinghamshire = 1,272 Q In the last 12 months, have you personally been a victim of any of the following crime types?

When online fraud and computer misuse are excluded, in the latest year, respondents from Nottingham were most likely to have been a victim of crime, the increase between first 18 months and the latest 18 months is highest for South Nottinghamshire

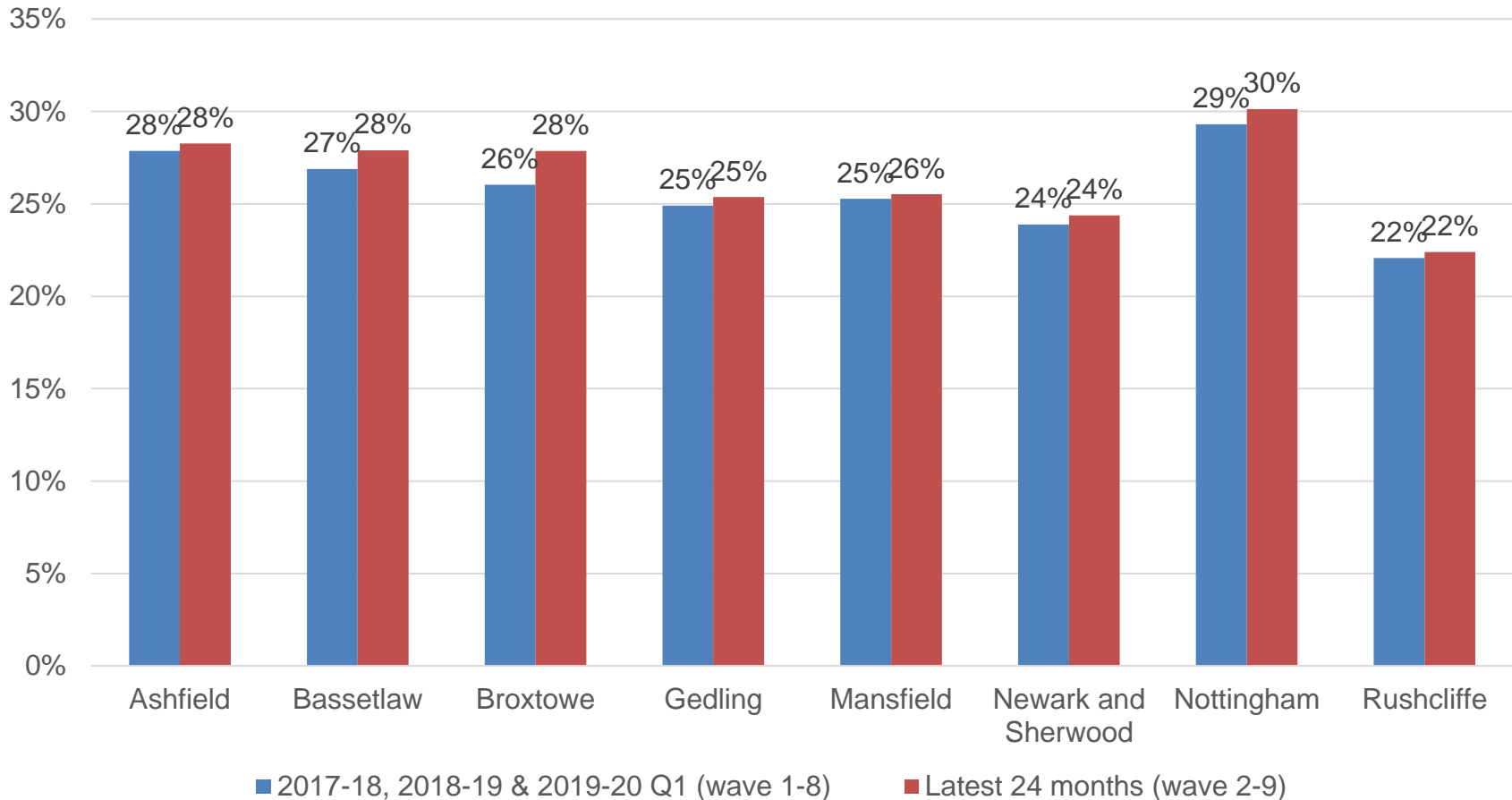
In the last 12 months, have you personally been a victim of crime? (excluding online fraud and computer viruses or malware)



Respondents from Nottingham were most likely to have been a victim of crime (including fraud and computer viruses / malware). This was followed by Ashfield, Bassetlaw and Broxtowe

In the last 12 months, have you personally been a victim of crime? Note: Data based on rolling 24 month period due to some smaller sample sizes

24 month periods



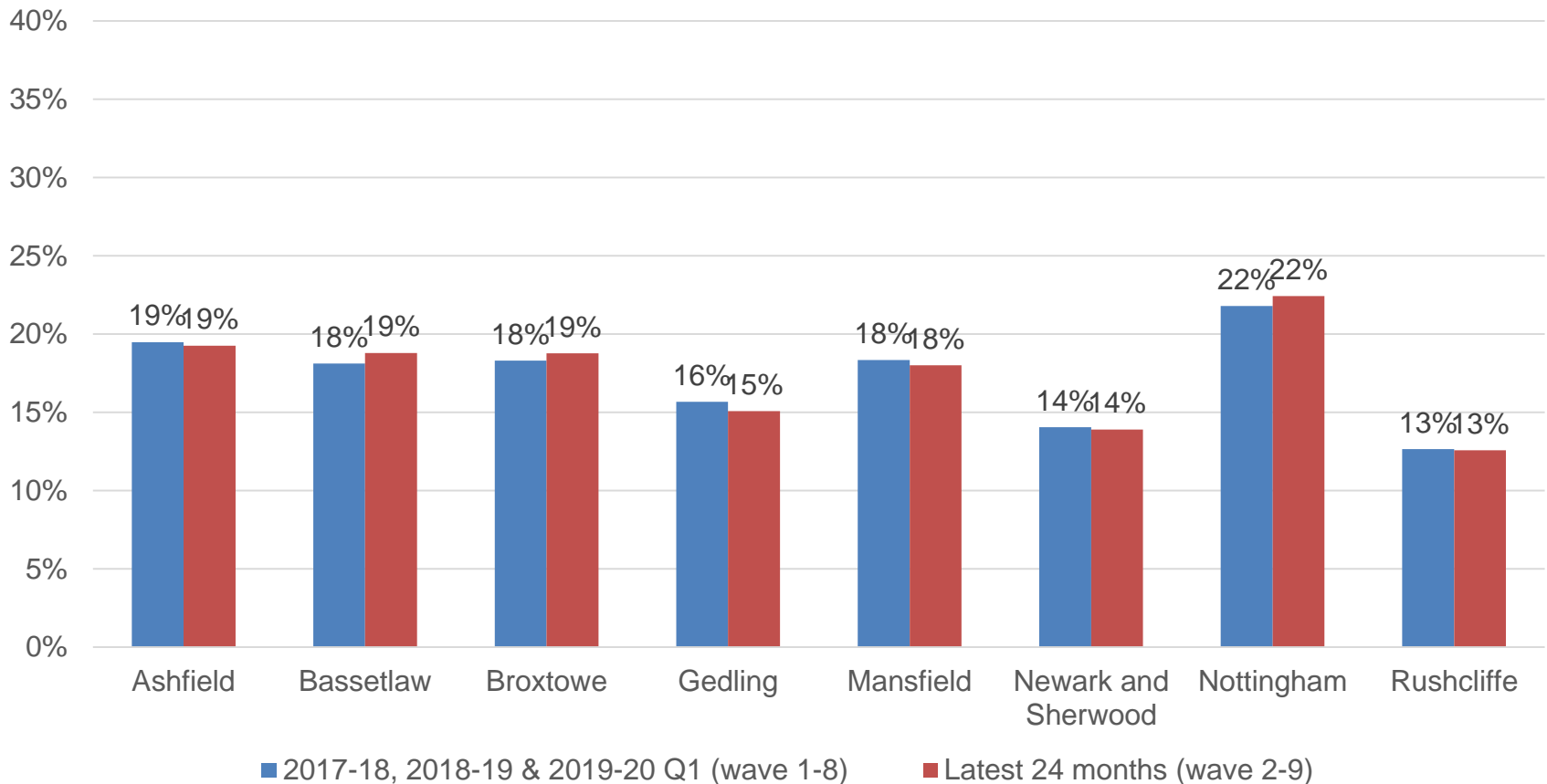
Base Last 24 months: Ashfield = 916, Bassetlaw = 867, Broxtowe = 850, Gedling = 873, Mansfield = 794, Newark & Sherwood = 905, Nottingham = 2,397, Rushcliffe = 857 Q: In the last 12 months, have you personally been a victim of any of the following crime types?

When online fraud and computer misuse are excluded, in the latest year, respondents from Nottingham were most likely to have been a victim of crime, the results show only small changes between the first 24 months and the latest 24 months

In the last 12 months, have you personally been a victim of crime? (excl. online fraud and computer viruses or malware)

24 month periods

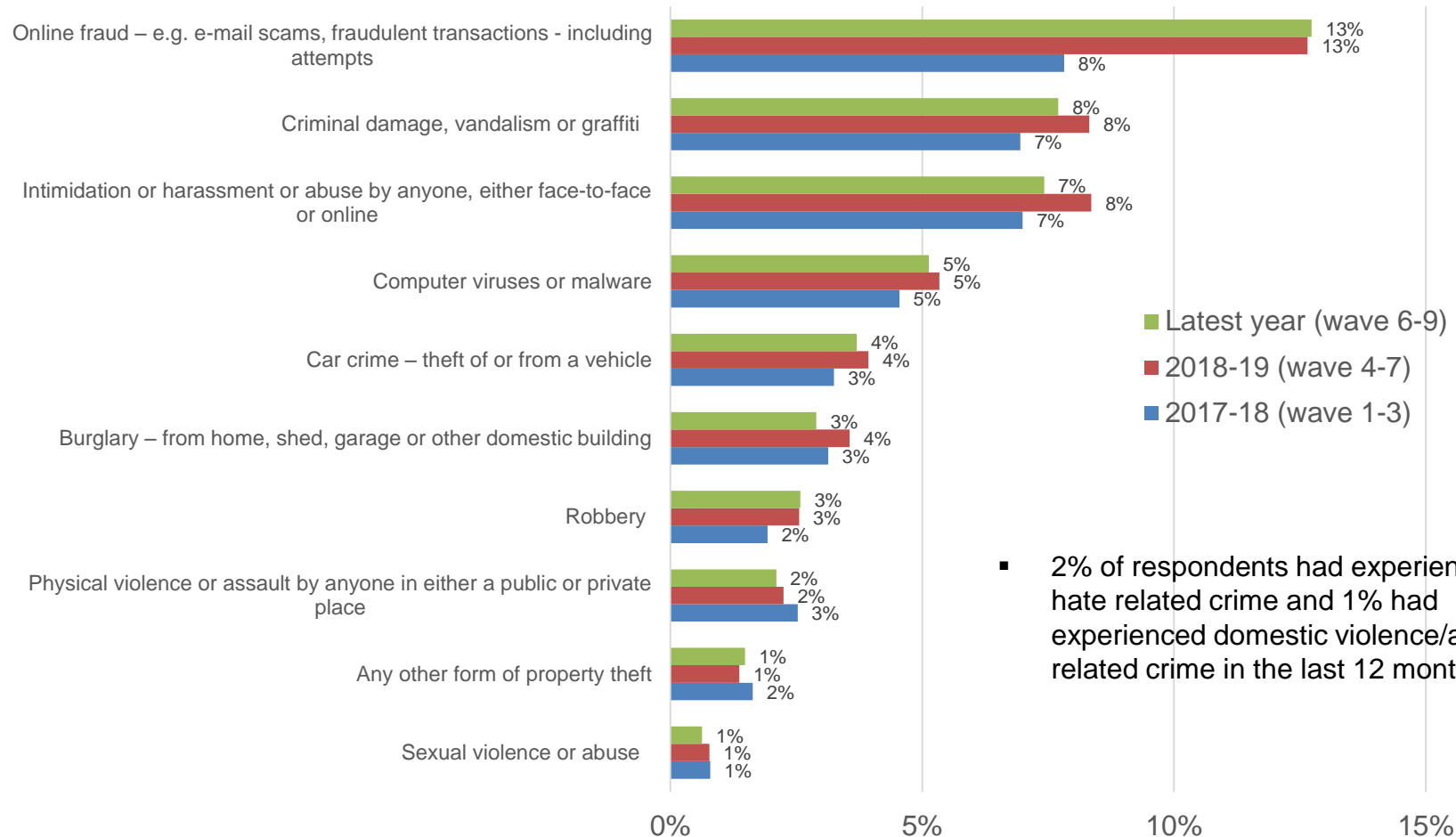
Note: Data based on rolling 24 month period due to some smaller sample sizes



Base Last 24 months: Ashfield = 916, Bassetlaw = 867, Broxtowe = 850, Gedling = 873, Mansfield = 794, Newark & Sherwood = 905, Nottingham = 2,397, Rushcliffe = 857 Q: In the last 12 months, have you personally been a victim of any of the following crime types?

In the latest year, 28% of respondents had been victim of a crime; online fraud remains the most commonly experienced crime

In the last 12 months, have you personally been a victim of any of the following crime types?



- 2% of respondents had experienced hate related crime and 1% had experienced domestic violence/abuse related crime in the last 12 months

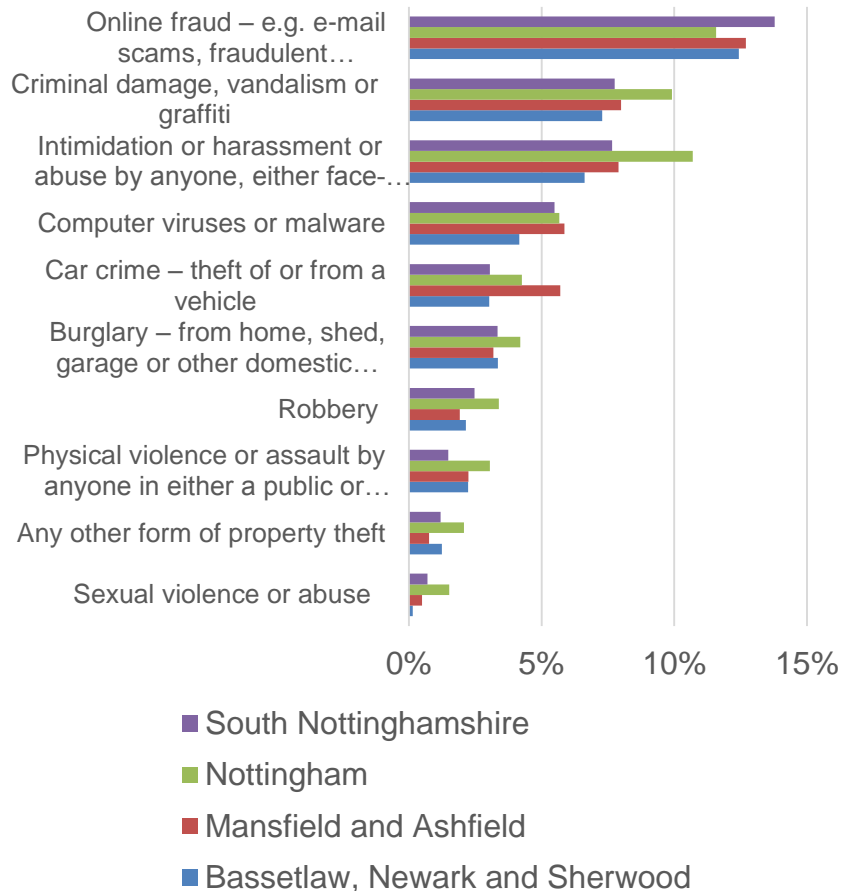
Base: 2017-18 = 3,152, 2018 – 19 = 4,251, Last 12 months = 4,186

Q: In the last 12 months, have you personally been a victim of any of the following crime types?

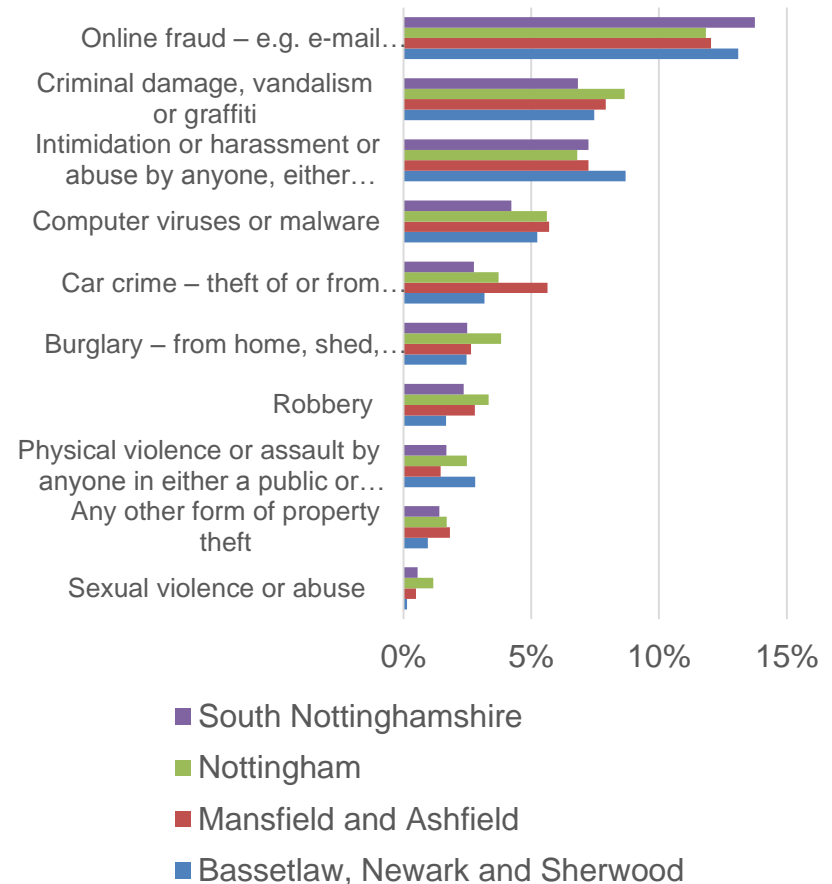
In the latest year, 27% of respondents from South Nottinghamshire, 28% from Bassetlaw, Newark and Sherwood, 27% from Mansfield and Ashfield and 30% from Nottingham had been victim of a crime

2018-19 and latest year

In the last 12 months, have you personally been a victim of any of the following crime types? – 2018-19 (wave 4-7)



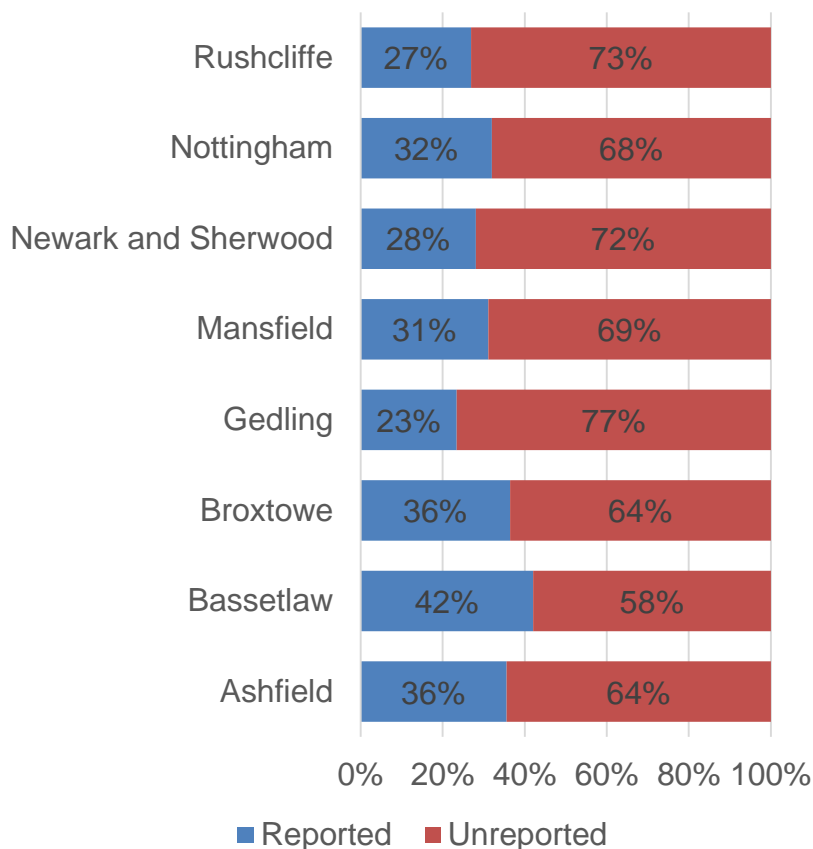
In the last 12 months, have you personally been a victim of any of the following crime types? – Latest year (wave 6-9)



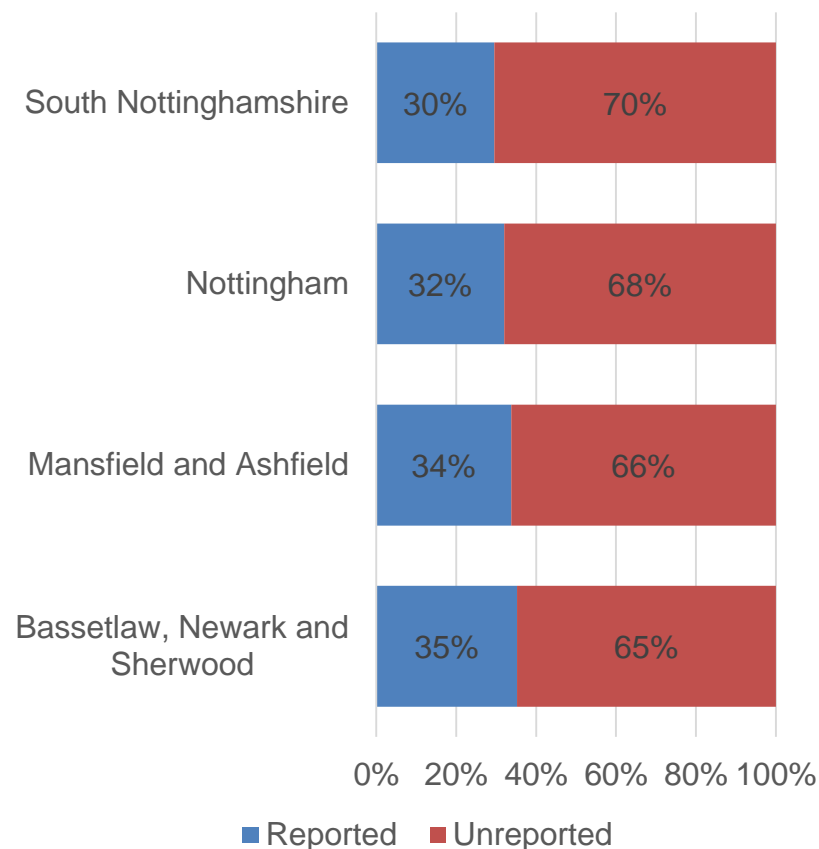
Base Last 12 Months: Bassetlaw, Newark & Sherwood = 884, Mansfield and Ashfield = 845, Nottingham = 1,185, South Nottinghamshire = 1,272 Q: In the last 12 months, have you personally been a victim of any of the following crime types?

32.3% of all crimes experienced over the last 2 years were reported to the police, rising to 54.5% when fraud and computer misuse crimes are excluded. Likelihood of reporting is generally higher in Bassetlaw (42%), Ashfield (36%) and Broxtowe (36%).

Proportion of reported and unreported crimes – Latest 2 years (wave 2-9)



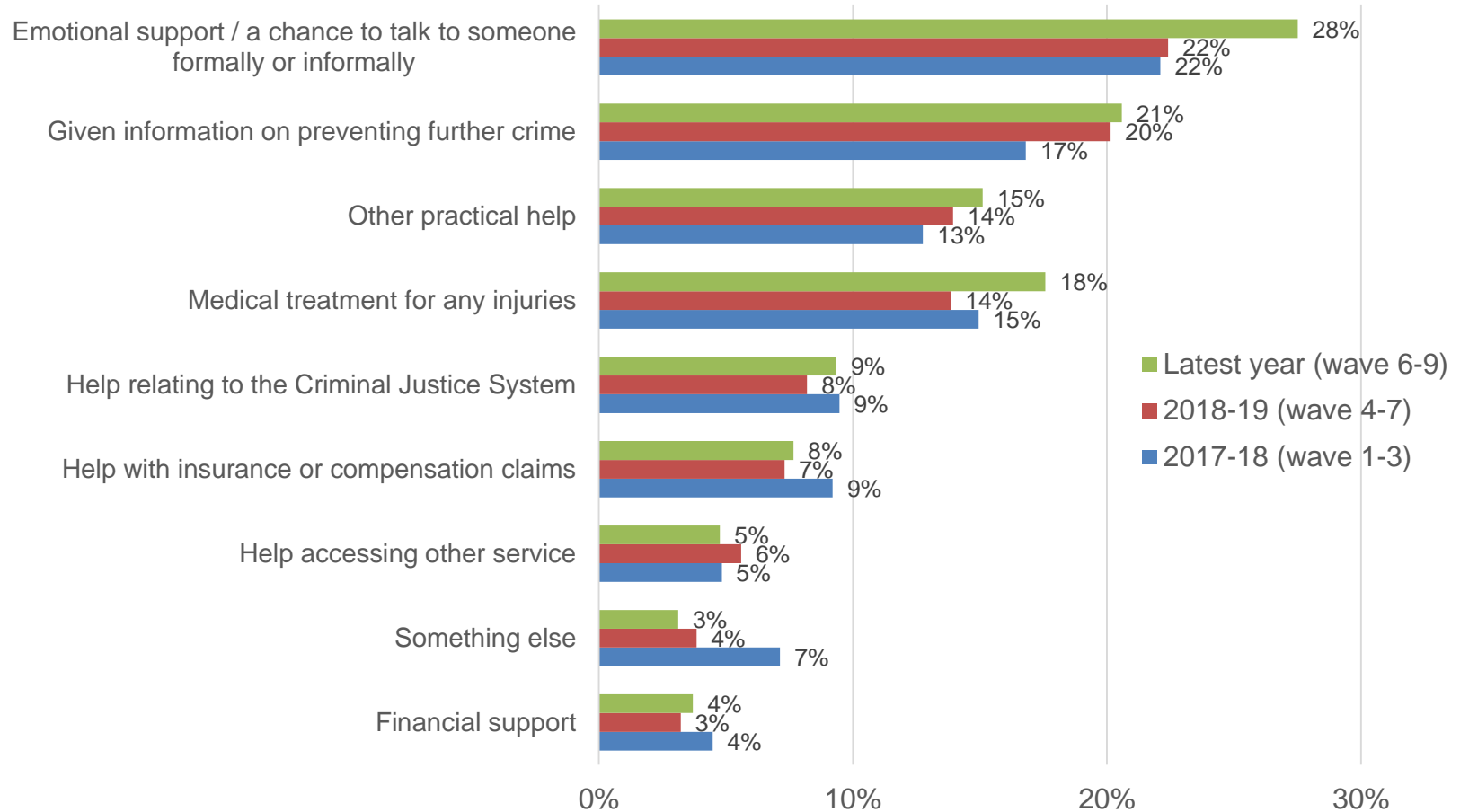
Proportion of reported and unreported crimes – Latest 2 years (wave 2-9)



Base: Ashfield = 237, Bassetlaw = 225, Broxtowe = 220, Gedling = 200, Mansfield = 180, Newark & Sherwood = 202, Nottingham = 644, Rushcliffe = 171 Q: In the last 12 months, **how many times** have you personally been a victim of the following crime types? (Trimmed to 12) Assuming, if victim more than once, all reported/unreported same as last

In the latest year, 46% of respondents who had been a victim of crime had received some form of information, advice or support

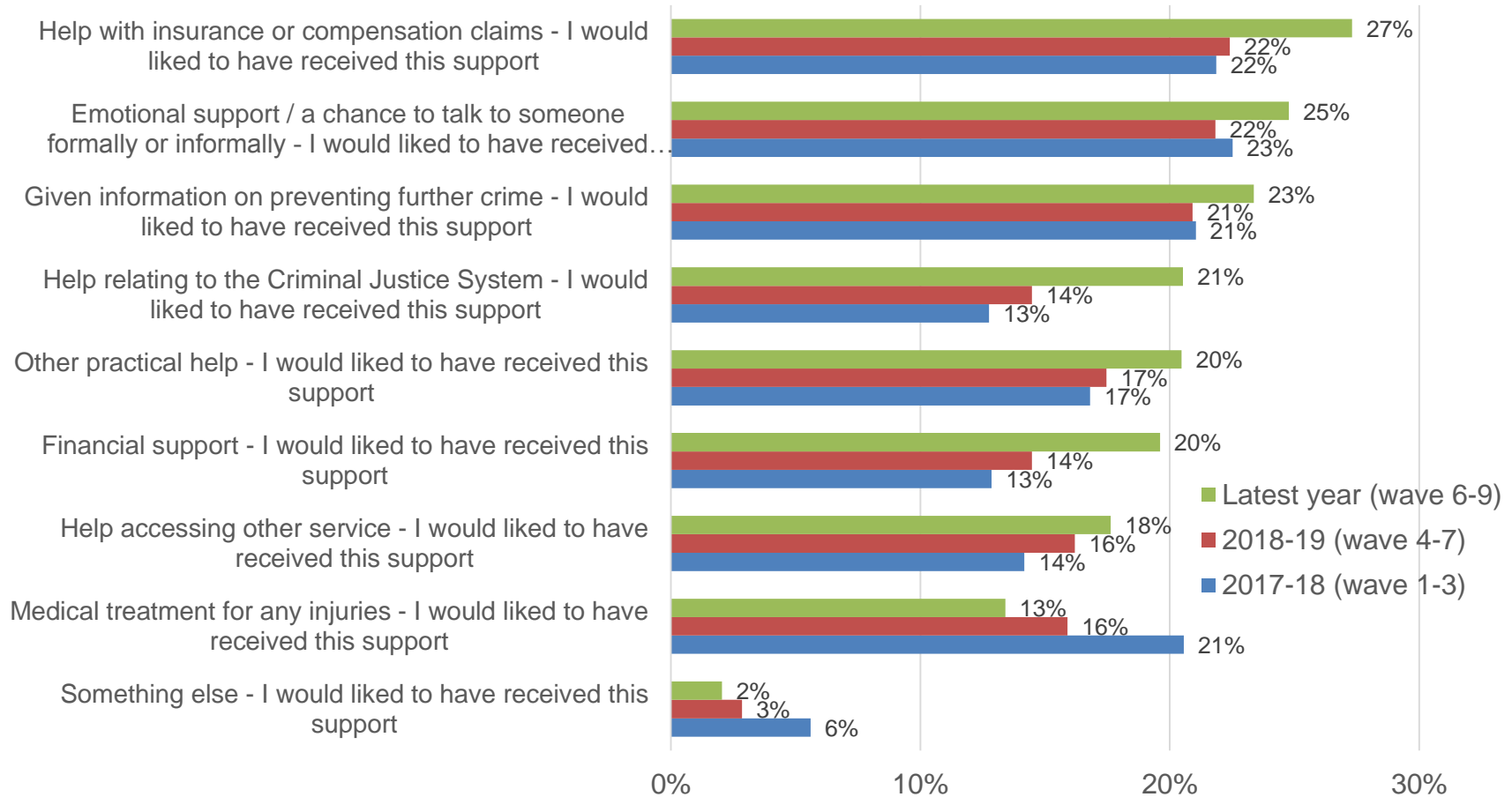
Did you receive any of the following types of information, advice or support when you were the victim of this crime?



Base: 2017-18 = 94 - 511, 2018 - 19 = 159 - 740, Last 12 months = 158 - 556 Q: Did you receive any of the following types of information, advice or support when you were the victim of this crime, and if not, please tell us if you would have liked to receive any of the following support?

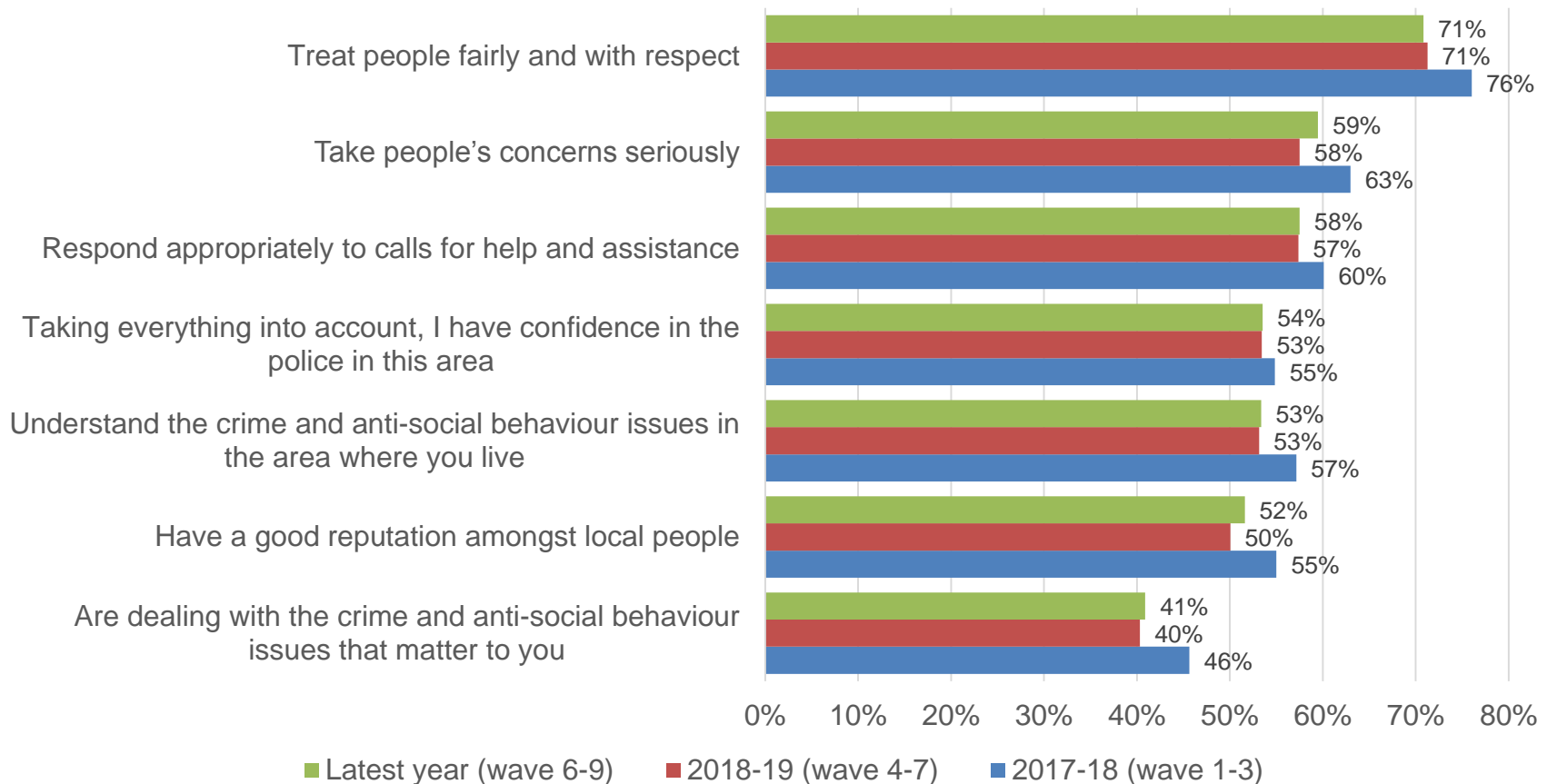
In the latest year, 45% of respondents who had been a victim of crime identified some form of information, advice or support that they would have liked to have received but did not

Would you have liked to receive any of the following types of information, advice or support when you were the victim of this crime?



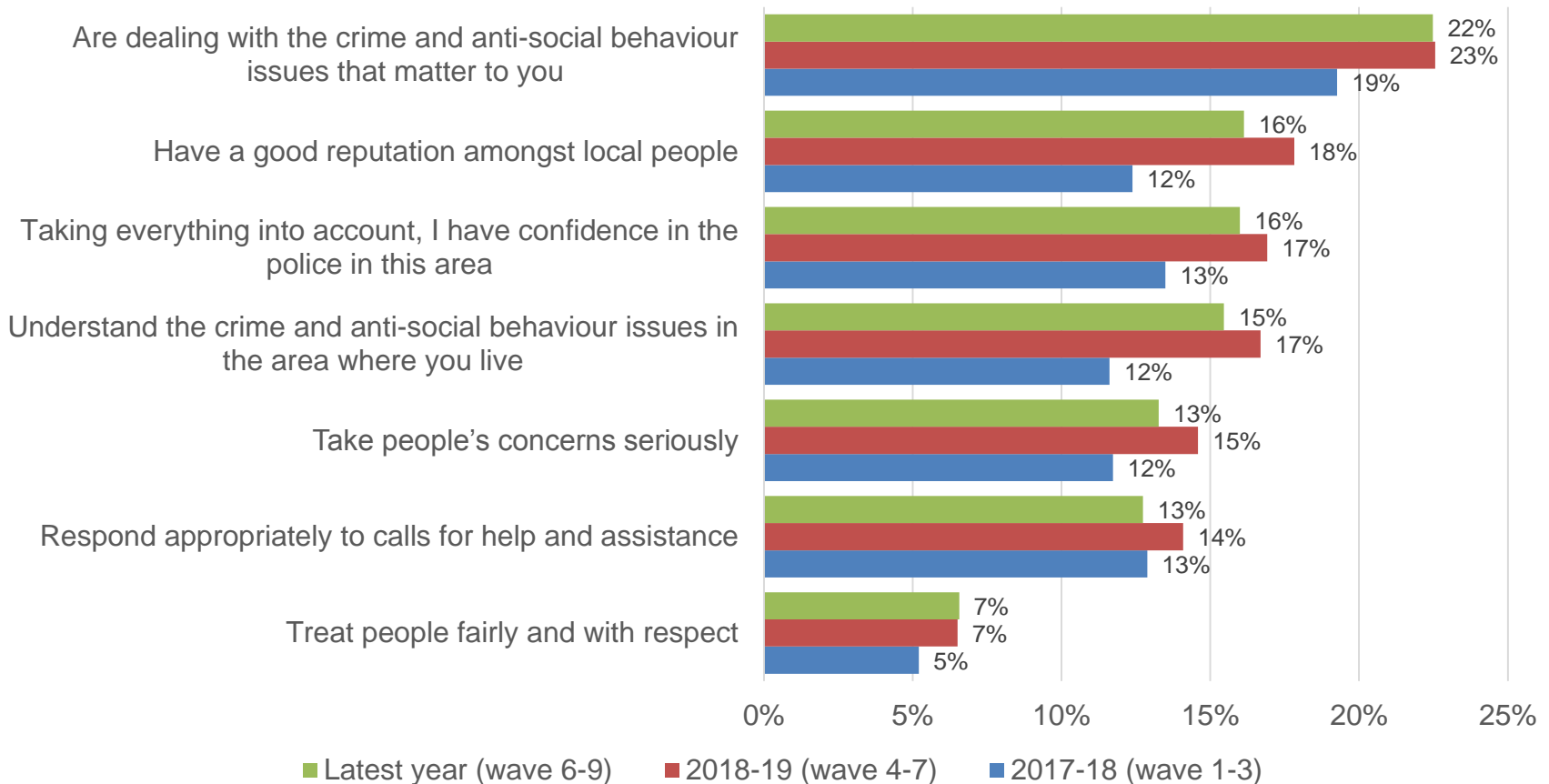
Excluding those who answered 'don't know', in the latest year 71% **agreed** that the police in their local area treat people fairly and with respect. This shows a small decline in agreement from 2017-18.

Please say how much you agree or disagree with each of the following statements about the police in your local area: - **Strongly Agree & Agree** – Excluding 'Don't know'



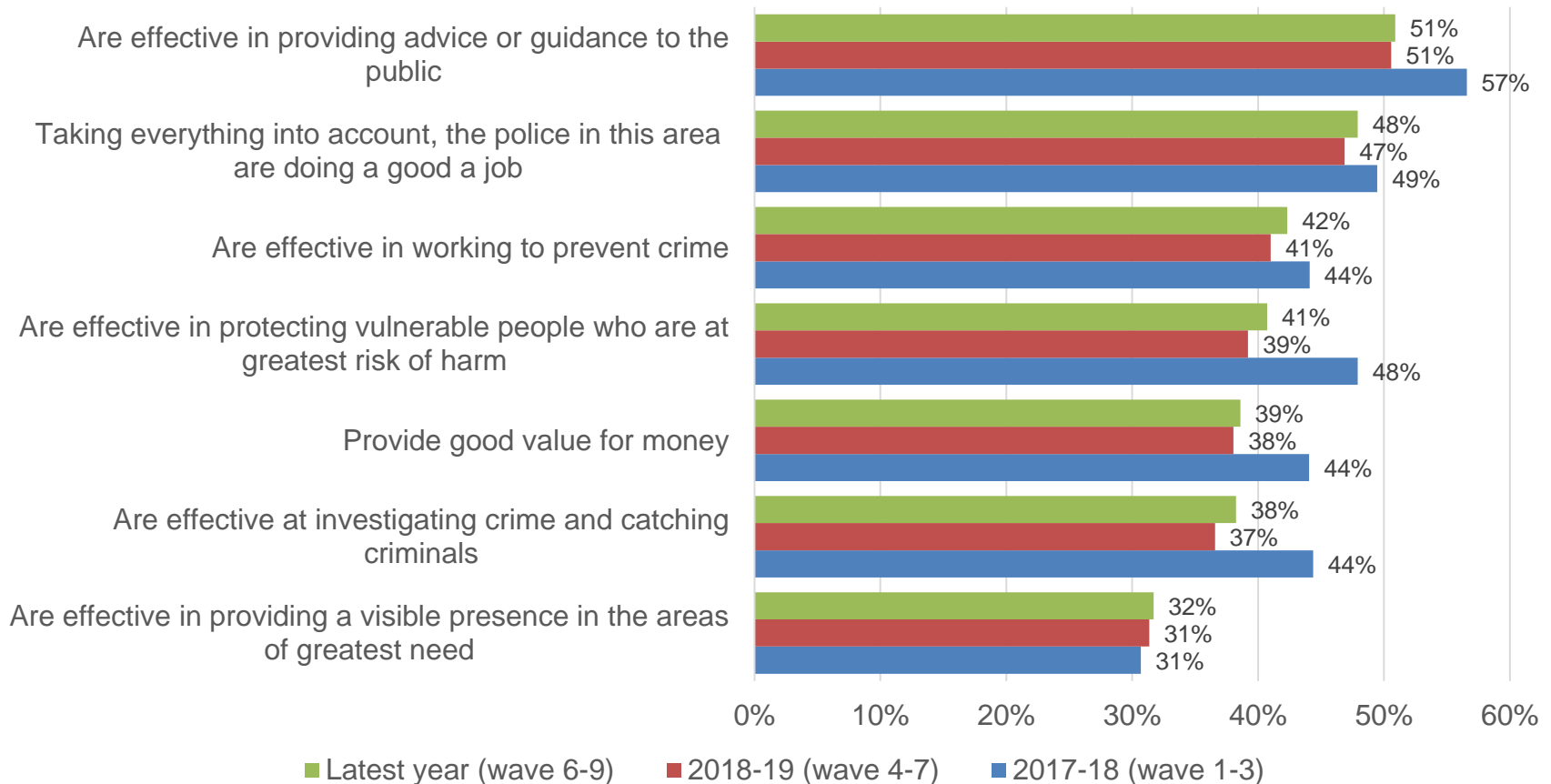
Excluding those who answered 'don't know', in the latest year 22% of respondents **disagreed** that the police in their local area are dealing with the crime and anti-social behavior issues that matter to them

Please say how much you agree or disagree with each of the following statements about the police in your local area: - **Strongly Disagree & Disagree** – Excluding 'Don't know'



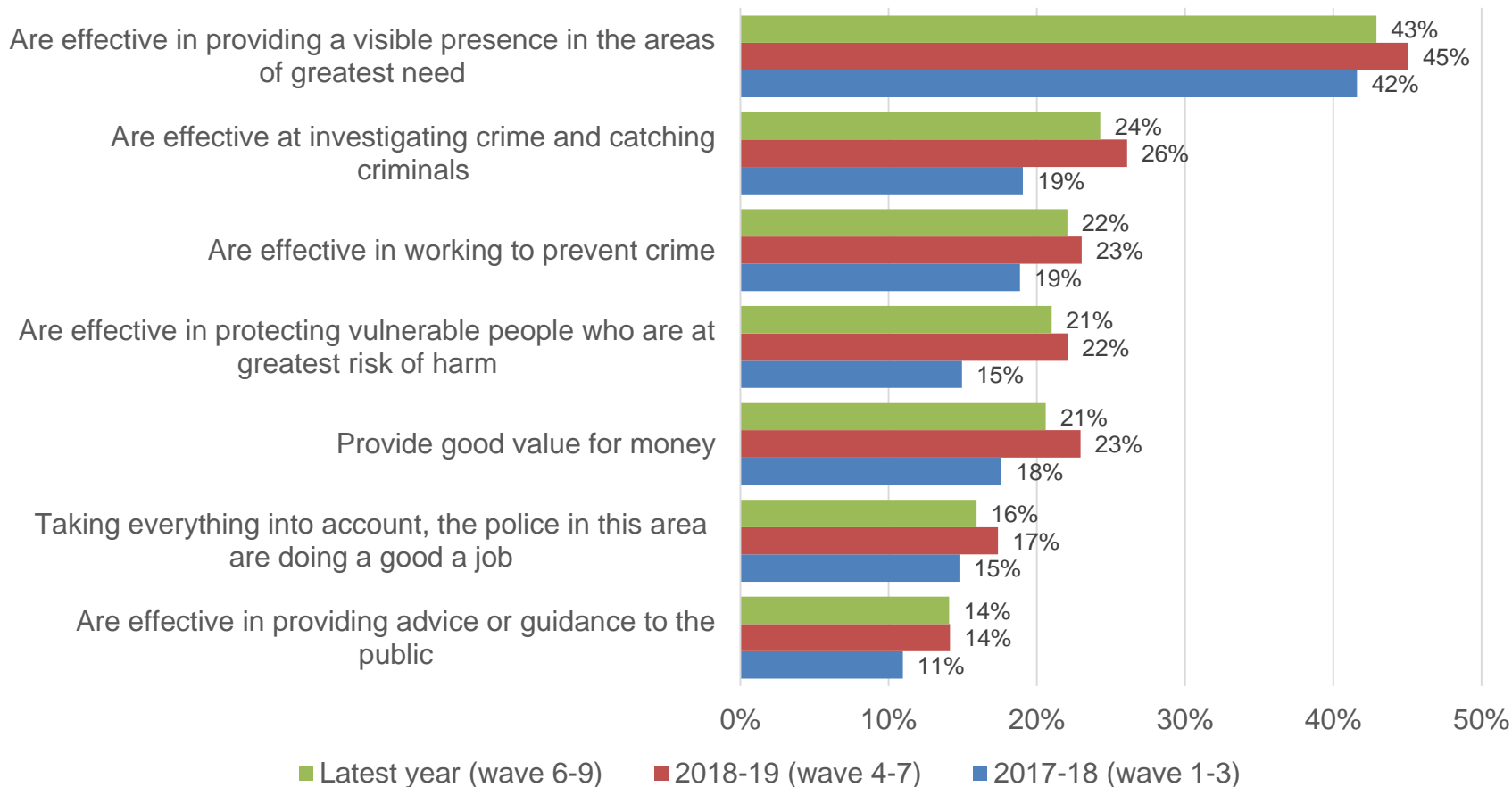
Excluding those who answered 'don't know', in the latest year 51% **agreed** that the police in their local area are effective in providing advice or guidance to the public; again some small declines from 2017-18

Please say how much you agree or disagree with each of the following statements about the police in your local area: - **Strongly Agree & Agree** – Excluding 'Don't know'



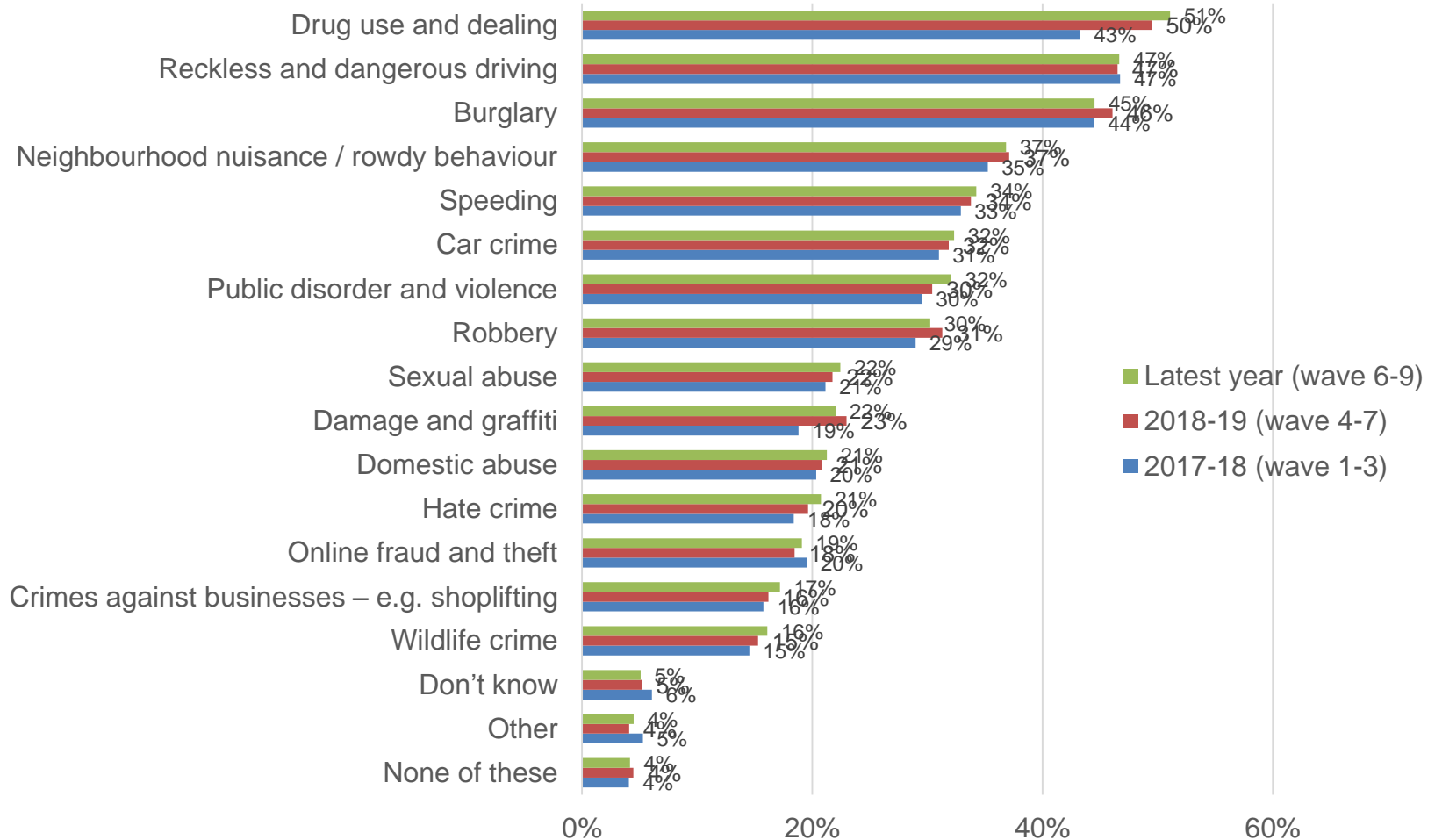
Excluding those who answered 'don't know', in the latest year 43% of respondents **disagreed** that the police in their local area are effective in providing a visible presence in the area of greatest need

Please say how much you agree or disagree with each of the following statements about the police in your local area: - **Strongly Disagree & Disagree** – Excluding 'Don't know'



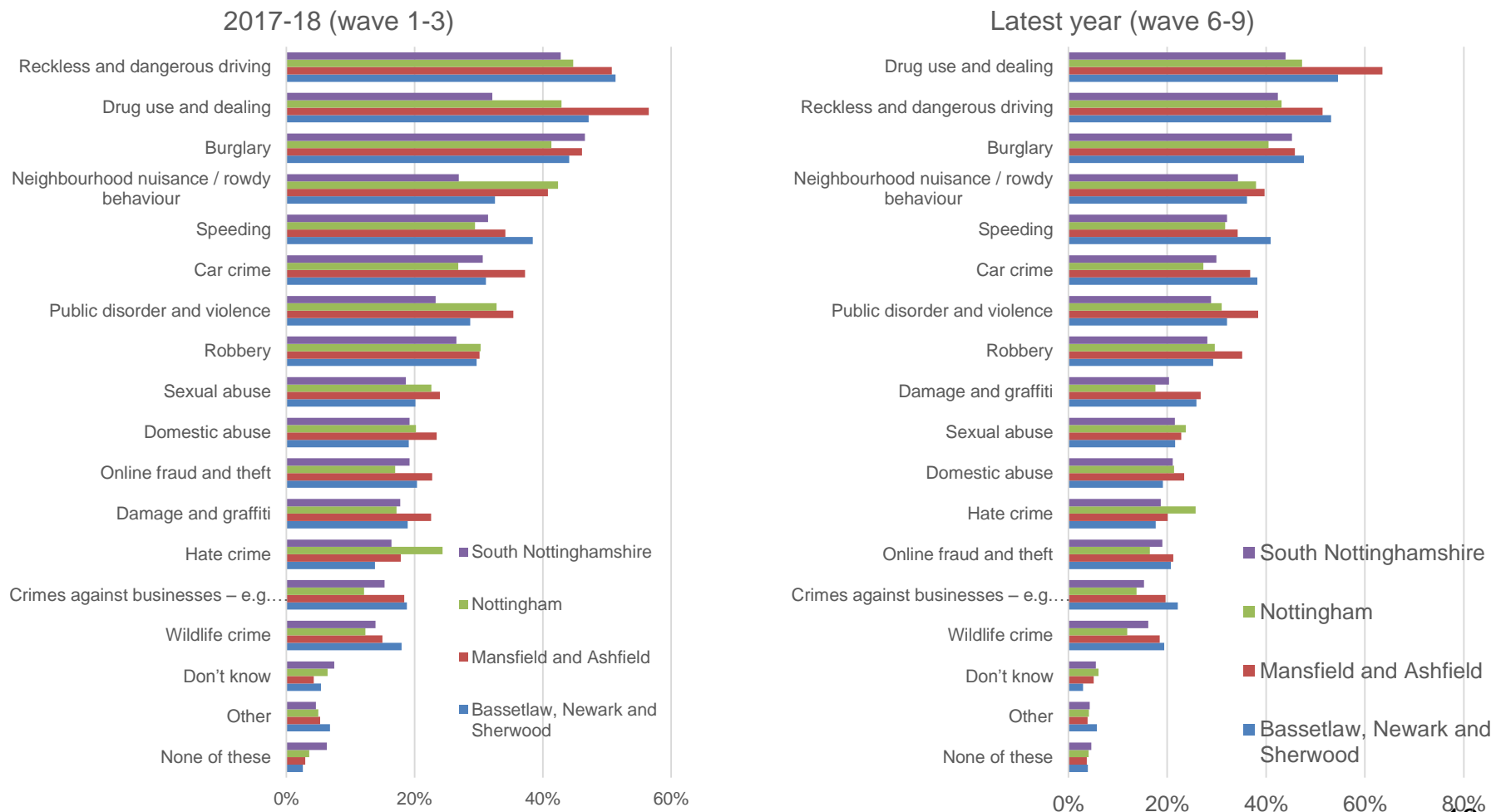
Drug use and dealing, reckless and dangerous driving, and burglary remain the top crime and ASB issues that respondents would like to see tackled in their area.

Are there any specific crime or anti-social behaviour issues that you would like to see the police and other agencies do more to tackle in your area?



Drug use and dealing, reckless and dangerous driving, and burglary are the top 3 crimes / ASB issues in all CSP areas in the latest year.

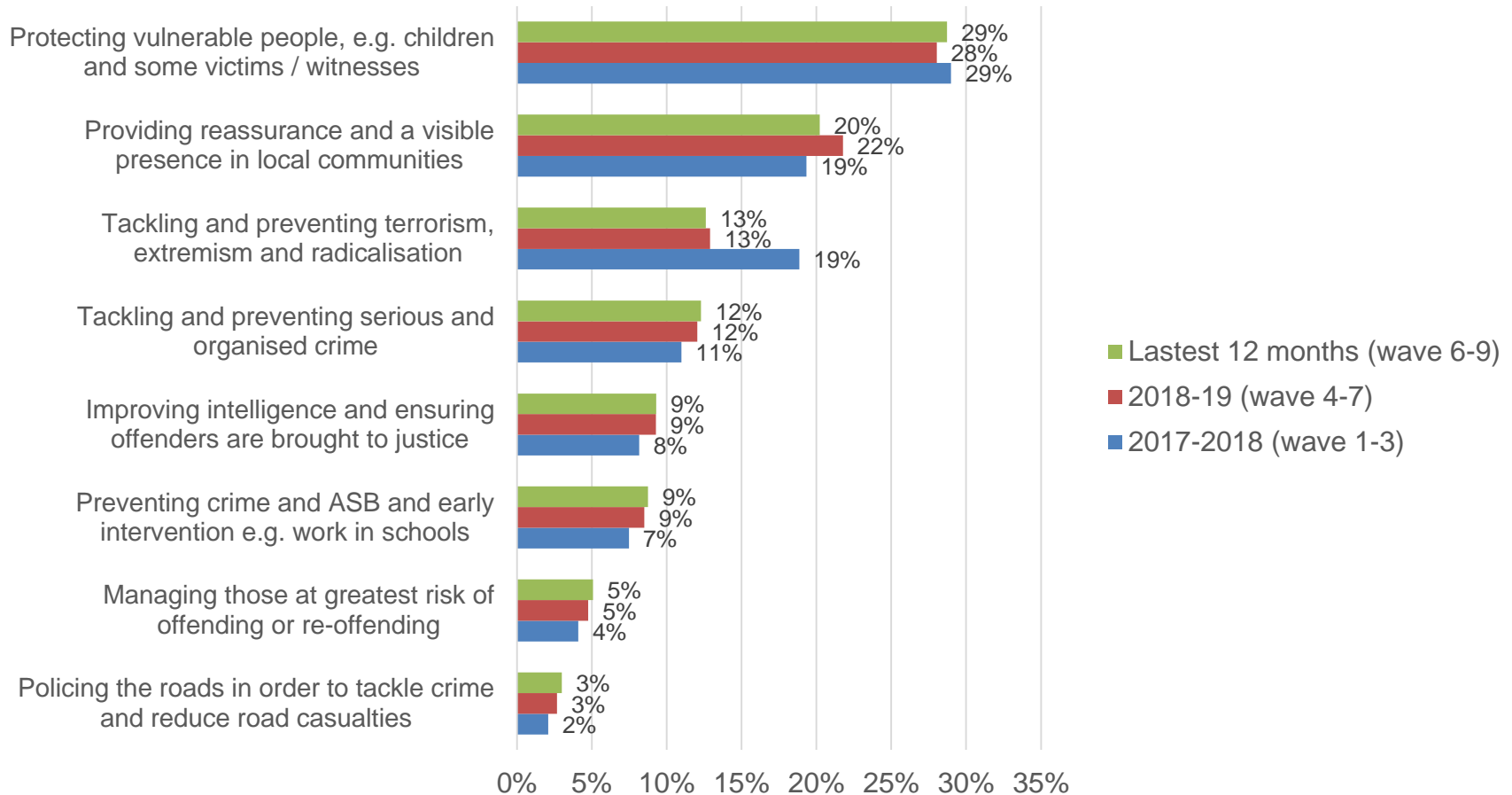
Are there any specific crime or anti-social behaviour issues that you would like to see the police and other agencies do more to tackle in your area?



Base: 2017-18 = 3,094, 2019-18 = 4,051, Last 12 months = 3,997 Q: And are there any specific crime or anti-social behaviour issues that you would like to see the police and other agencies do more to tackle in your area?

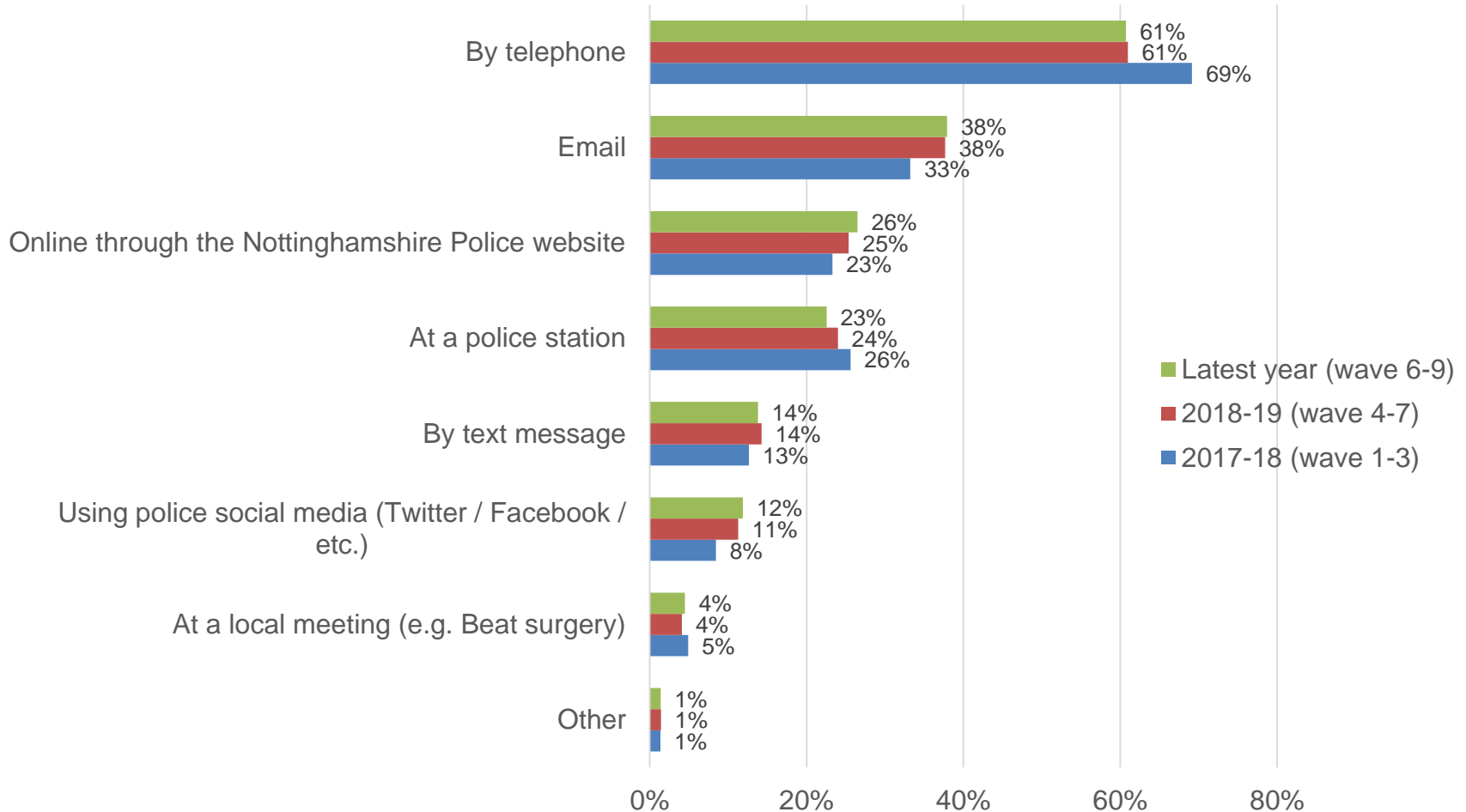
In the latest year, 29% of respondents ranked protecting vulnerable people as the aspect they would most like to see the police focus their resources on

Responding to emergencies will always be a top priority for Nottinghamshire Police, but beyond this, on what activity would you most like to see the police focus their resources over the coming year?



In the latest year, 61% of respondents would prefer to contact their local policing team by phone if they had a non-urgent issue – a small reduction from 2017-18, balanced with a small increase preferring email

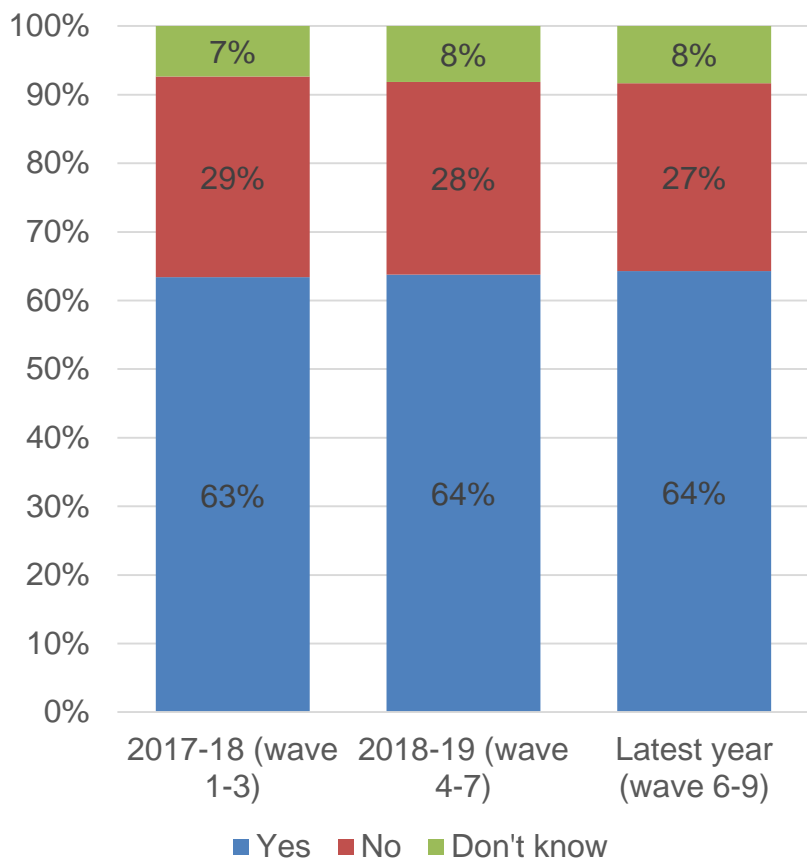
If you had a non-urgent issue that you wanted to let your local policing team know about, which of these would be your preferred way to make contact?



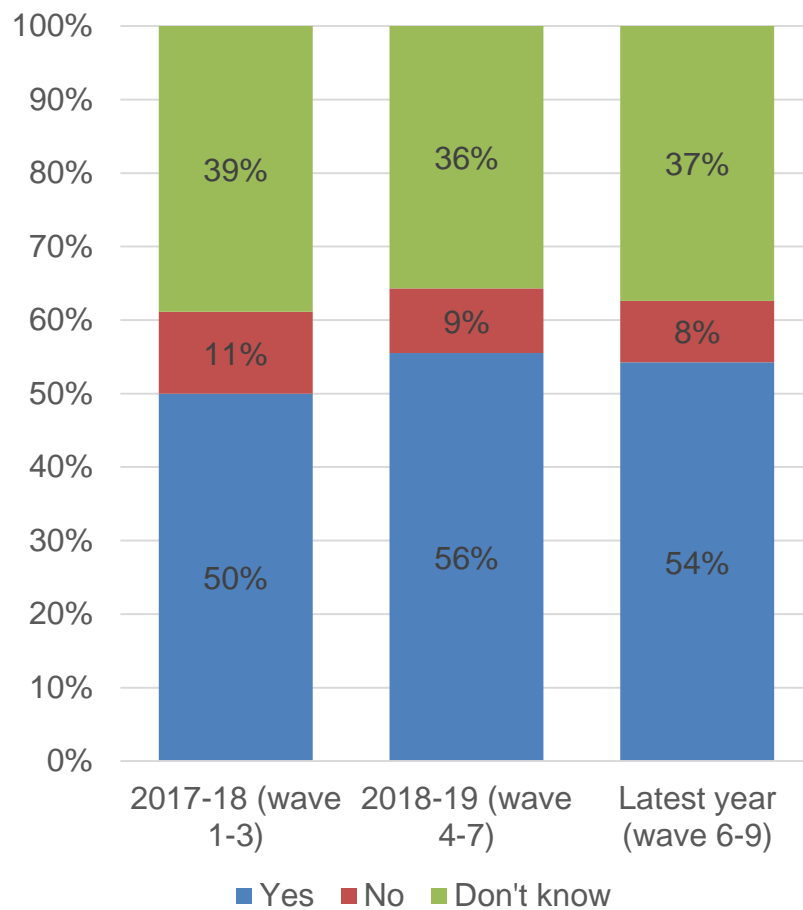
Base: 2017-18 = 3,172, 2018-19 = 4,095, Last 12 months = 4,040 Q: If you had a non-urgent issue that you wanted to let your local policing team know about, which of these would be your preferred way to make contact?

In the latest year, 64% of respondents were aware of the level of police funding cuts and 54% felt that cuts had affected policing in their area. New survey questions will now be introduced to assess the perceived impact of investment in policing services over the next three years.

Before today, were you aware of the level of police funding cuts over recent years?

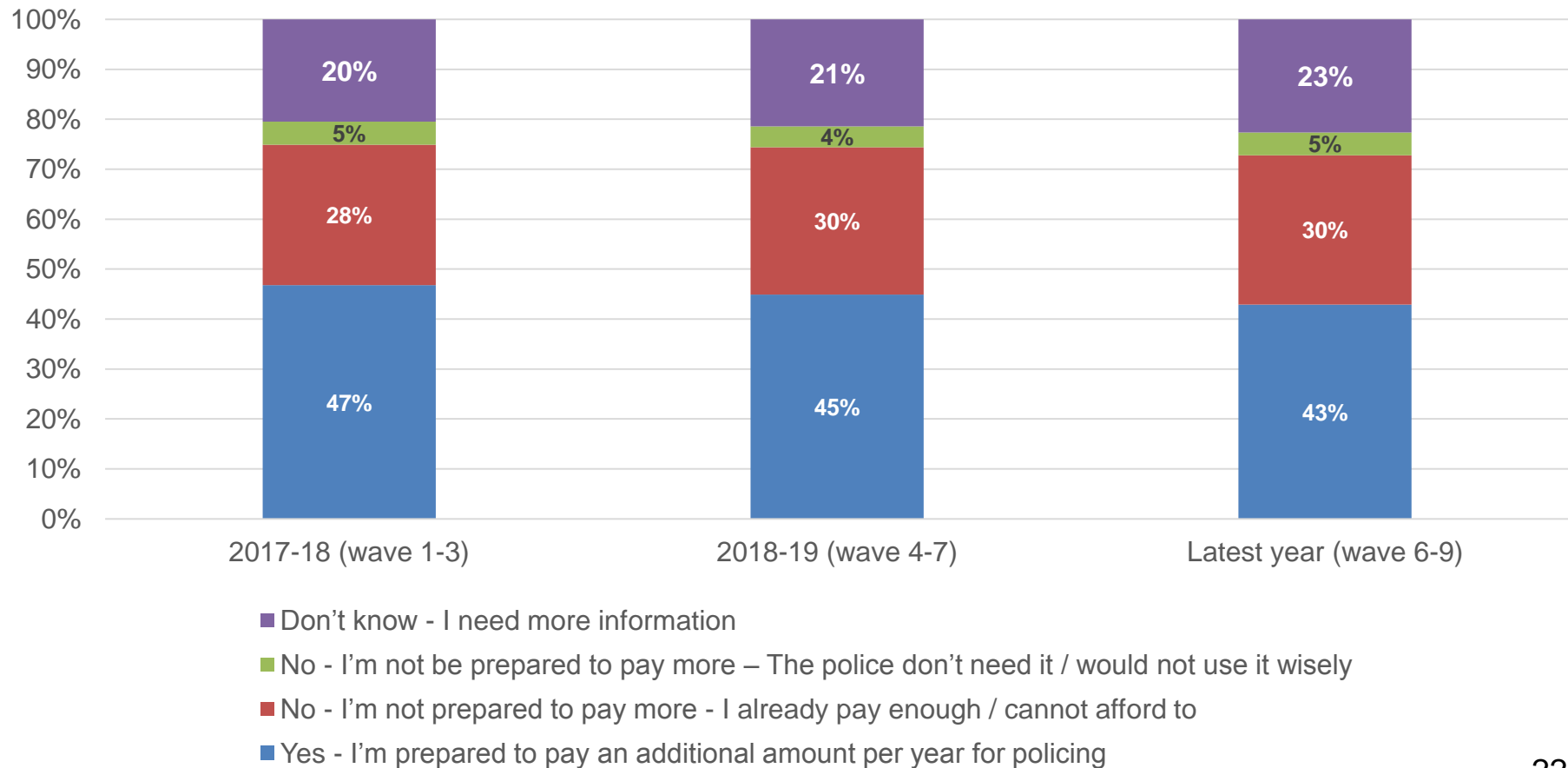


Do you feel that funding cuts have affected policing in your area?



43% of respondents would be prepared to pay more council tax towards policing, compared to 34% that would not.

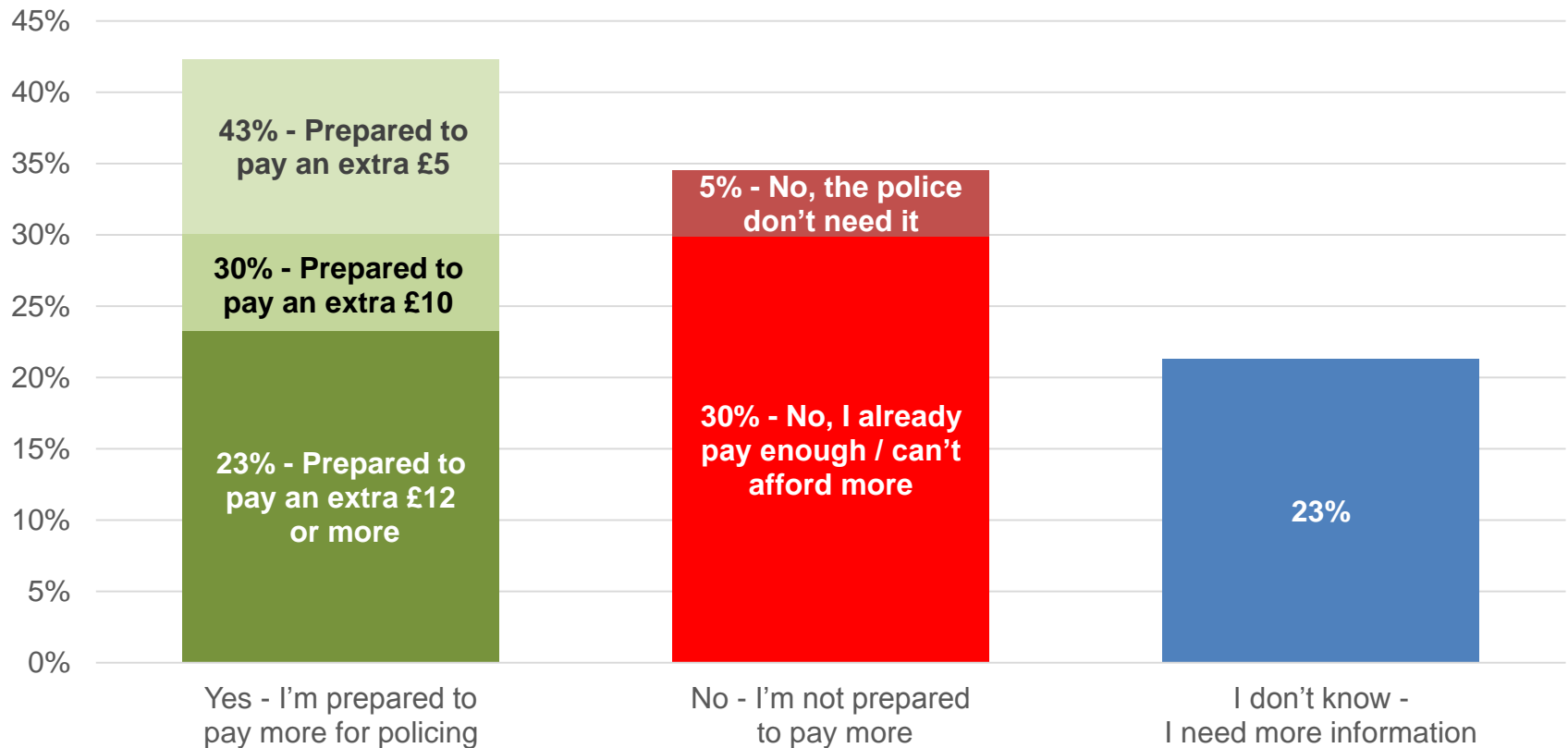
Households in Nottinghamshire pay, on average, £195 a year towards policing as part of their Council Tax (Band D properties). To what extent would you be prepared to pay more?



Base: 2017-18 = 3,071, 2018-19 = 4,134, Last 12 months = 4,070 Q: Households in Nottinghamshire pay, on average, £195 a year towards policing as part of their Council Tax (Band D properties). To what extent would you be prepared to pay more?

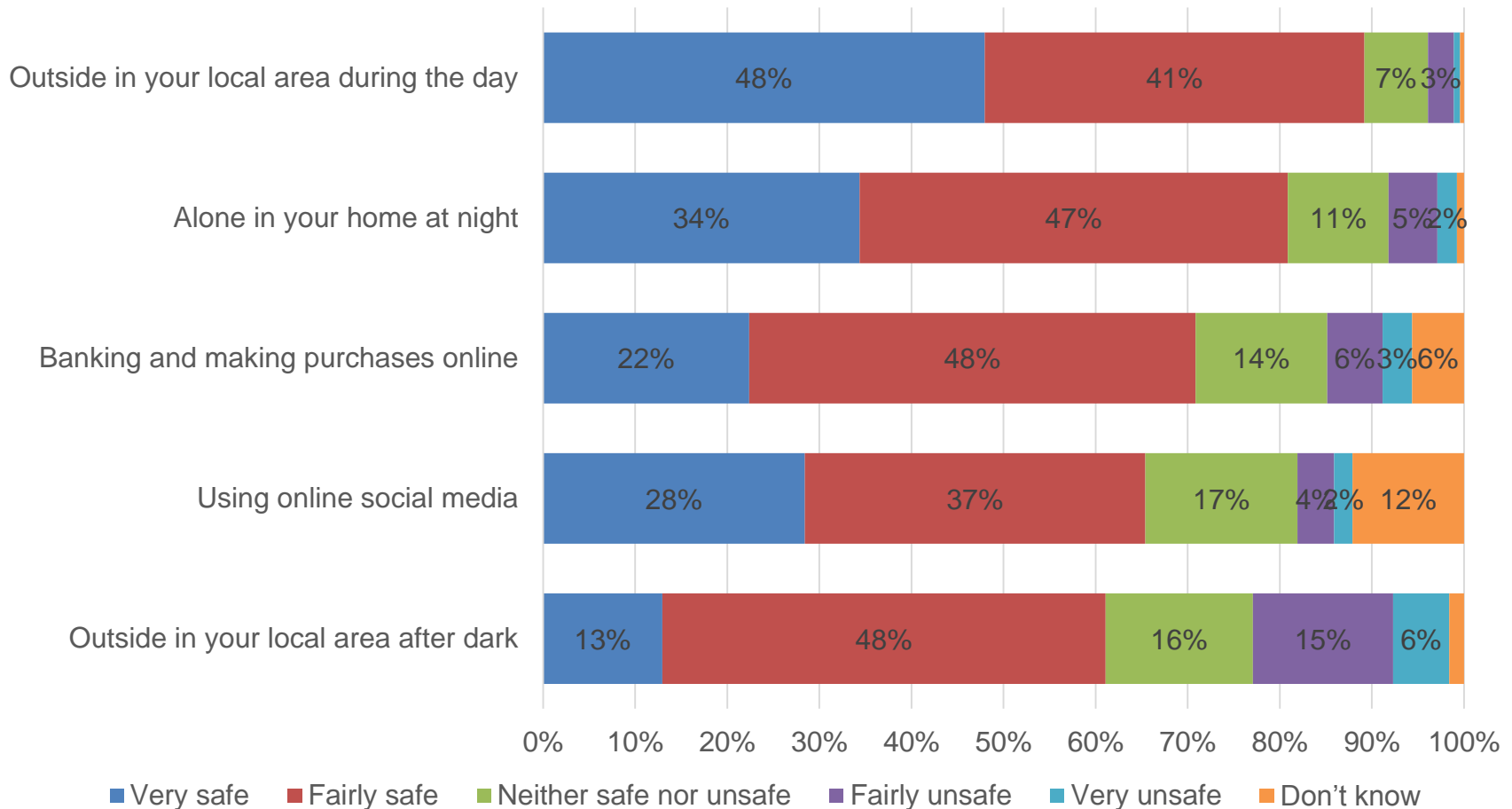
43% of respondents would be prepared to pay more council tax towards policing, compared to 34% that would not.

Households in Nottinghamshire pay, on average, £195 a year towards policing as part of their Council Tax (Band D properties). To what extent would you be prepared to pay more?



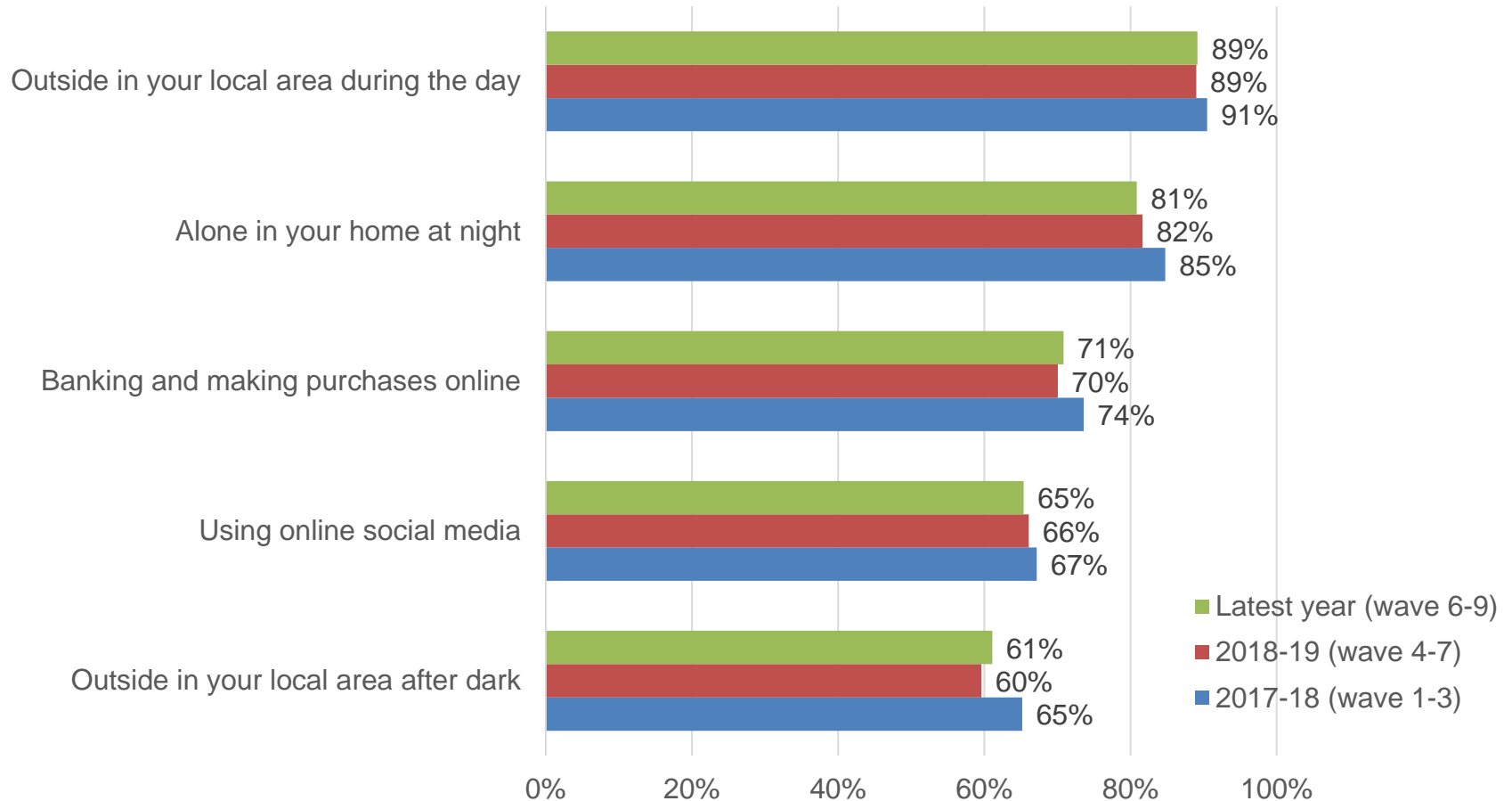
89% of respondents feel very or fairly safe outside in their local area by day – this falls to 61% when outside in their local area after dark

Please say how safe or unsafe you generally feel in the following situations: Latest year (wave 6-9)



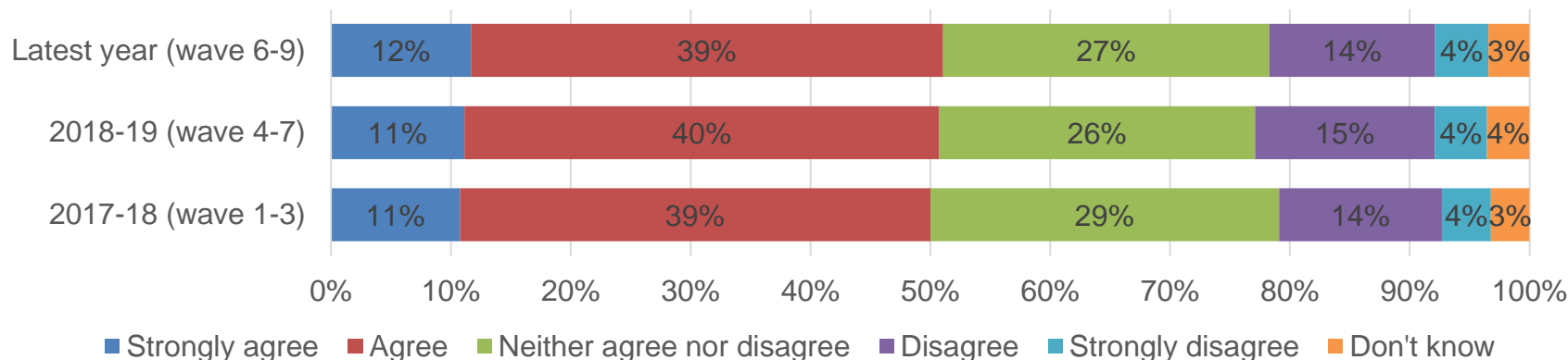
There has been little variation in reported feelings of safety over the last year.

Please say how safe or unsafe you generally feel in the following situations: Very & fairly safe

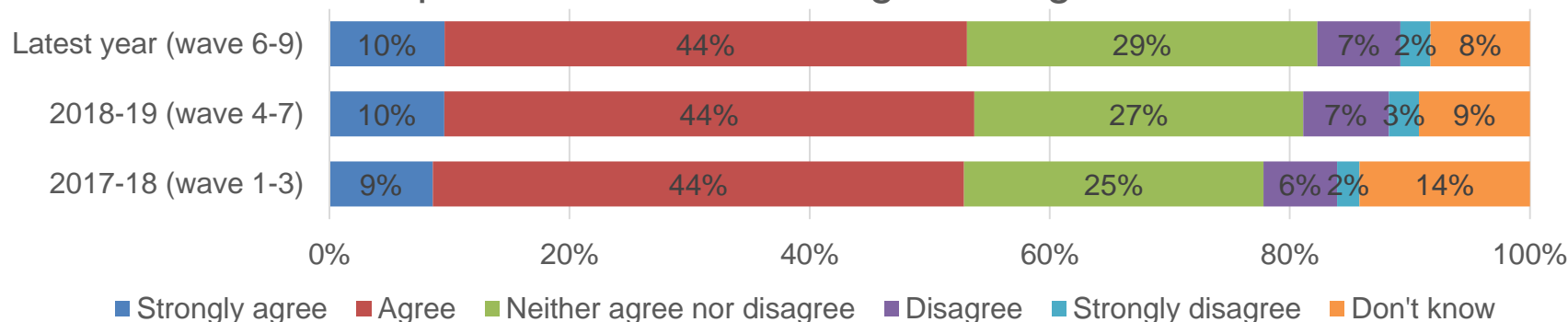


In the latest year, 53% agree that people from different backgrounds get on well and 51% agree that there is a sense of community where they live. The results are similar to 2017-18.

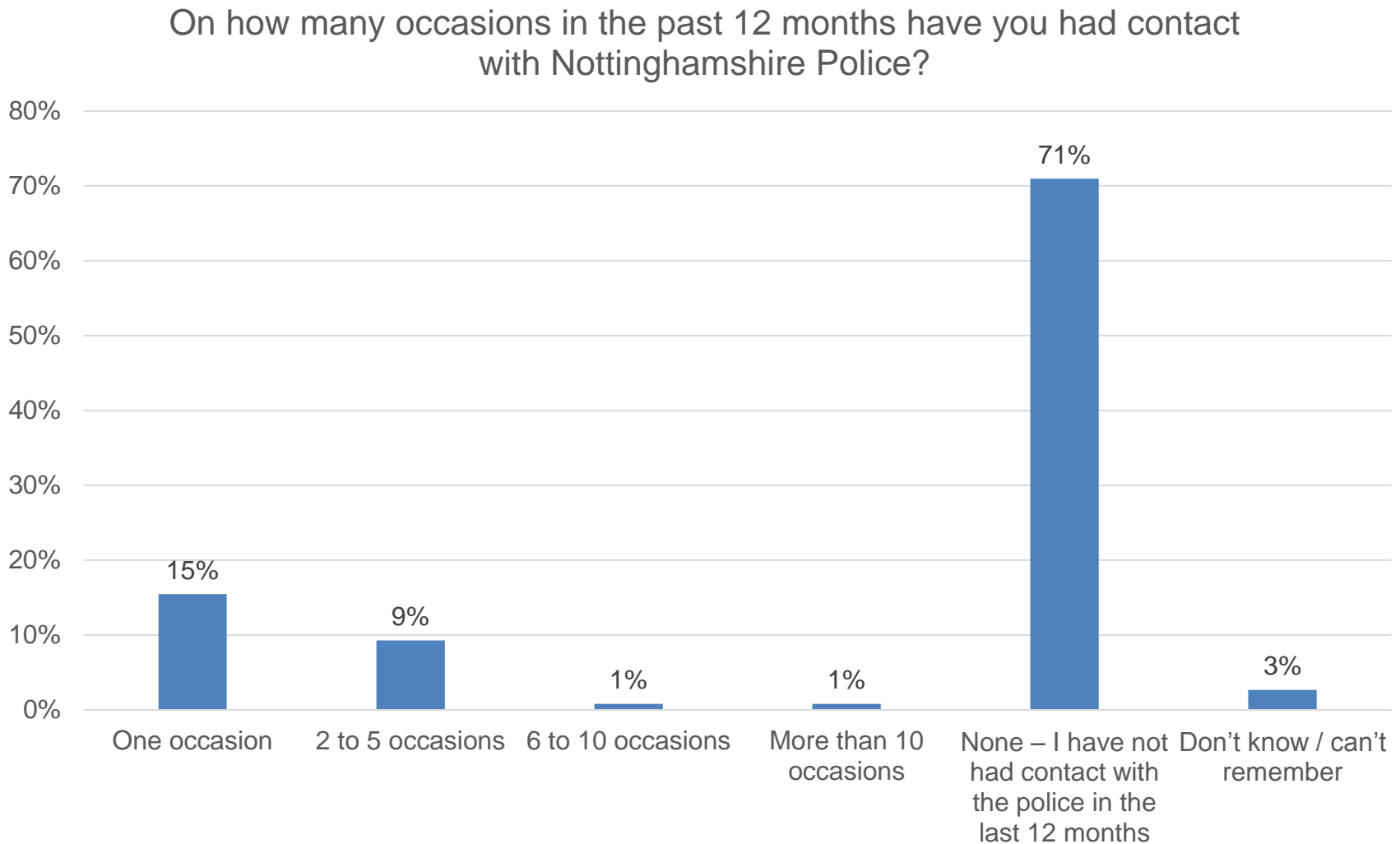
There is a sense of community



People from different backgrounds get on well

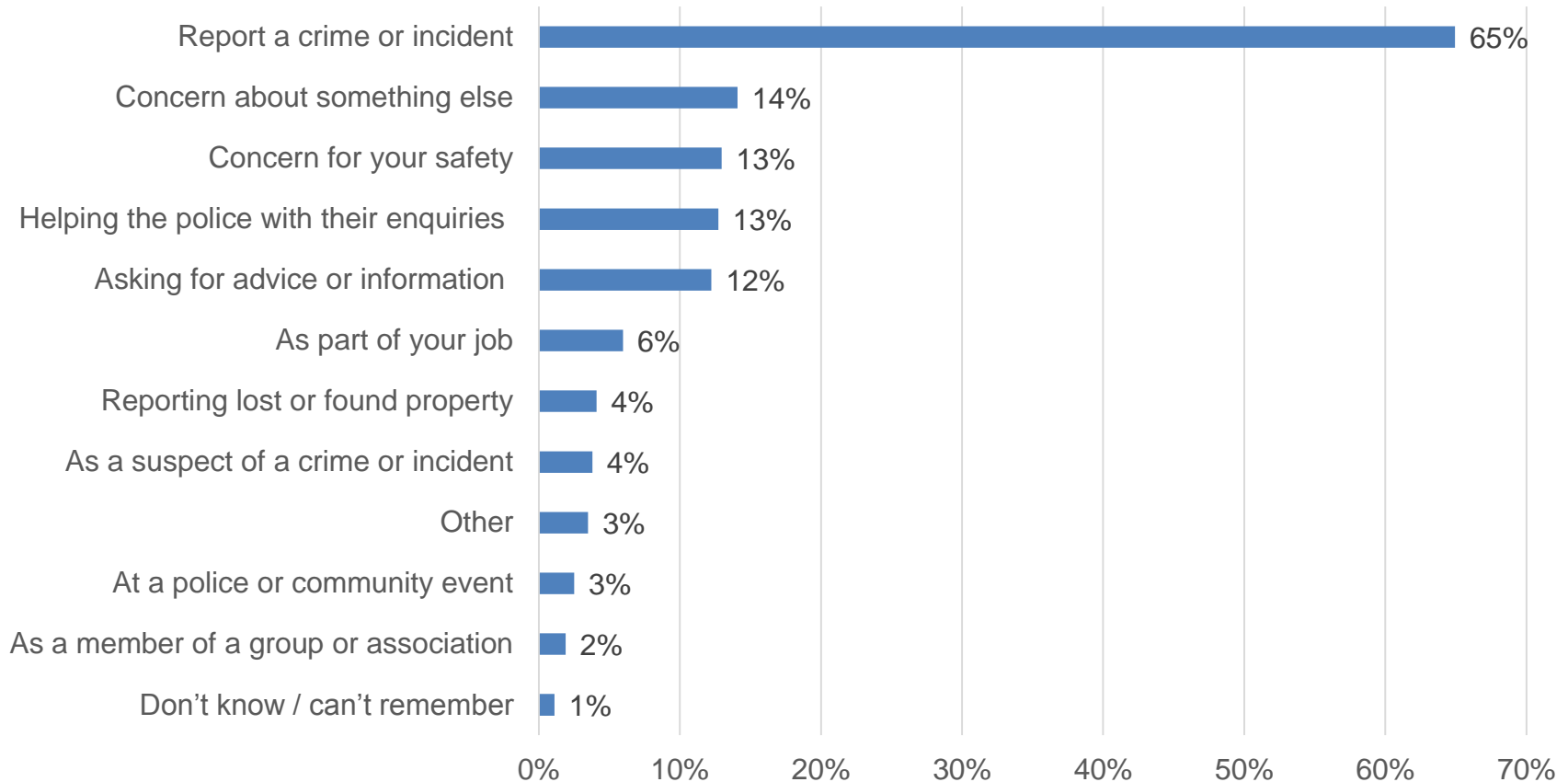


26% respondents reported having had contact Nottinghamshire Police over the last 12 months



Of the 26% of respondents that have had contact with the police in the last 12 months, 65% had done so to report a crime or incident

Thinking back to the occasions that you have had contact with the police over the last 12 months, what were the reasons?



Of those that have had contact with Nottinghamshire police over the last 12 months, 60% were satisfied with the service that they received while 25% were dissatisfied

Thinking back to the last occasion that you had contact with Nottinghamshire Police, overall how satisfied or dissatisfied were you with the service you received?

