

# Nottinghamshire PCC Police and Crime Survey 2019-20 Quarter 3

**January 2020**

# Introduction and Methodology

- ❑ 'Top-line' results from the 2019/20 Nottinghamshire Police and Crime Survey to December 2019 conducted by Information by Design for Nottinghamshire PCC.
- ❑ Latest wave of fieldwork was conducted between 26<sup>th</sup> November and 21<sup>st</sup> December 2019
- ❑ The survey was undertaken using an 'assisted self-completion' method, with a team of fieldwork staff working across selected Lower Super Output Areas (LSOAs). One in eight LSOAs were selected from each of the following geographic areas:
  - Nottingham
  - South Nottinghamshire - comprising Gedling, Broxtowe and Rushcliffe
  - BNS – comprising Bassetlaw, Newark and Sherwood
  - Mansfield and Ashfield
- ❑ A sample of 4,333 respondents has been achieved over the last year broken down as follows:

Area	Local Authority	2017-18* (wave 1-3) Unweighted Count	2018-19 (wave 4-7) Unweighted Count	2019-20 Q1 (wave 8) Unweighted Count	2019-20 Q2 (wave 9) Unweighted Count	2019-20 Q3 (wave 10) Unweighted Count	Latest year (wave 7-10) Unweighted Count
Bassetlaw, Newark and Sherwood	Bassetlaw	404	533	117	127	133	530
	Newark and Sherwood	417	548	153	140	137	554
	<b>Total</b>	<b>821</b>	<b>1081</b>	<b>270</b>	<b>267</b>	<b>270</b>	<b>1084</b>
Mansfield and Ashfield	Ashfield	473	568	118	137	133	514
	Mansfield	340	563	152	130	136	569
	<b>Total</b>	<b>813</b>	<b>1131</b>	<b>270</b>	<b>267</b>	<b>269</b>	<b>1083</b>
Nottingham	<b>Nottingham</b>	<b>813</b>	<b>1066</b>	<b>270</b>	<b>265</b>	<b>270</b>	<b>1082</b>
South Notts	Broxtowe	261	358	101	80	91	364
	Gedling	273	411	110	99	89	430
	Rushcliffe	301	336	59	<b>88</b>	90	290
	<b>Total</b>	<b>835</b>	<b>1105</b>	<b>270</b>	<b>267</b>	<b>270</b>	<b>1084</b>

\* Data presented is based on financial years. 2017-18 is the partial year comprising waves 1-3

# Fieldwork Periods

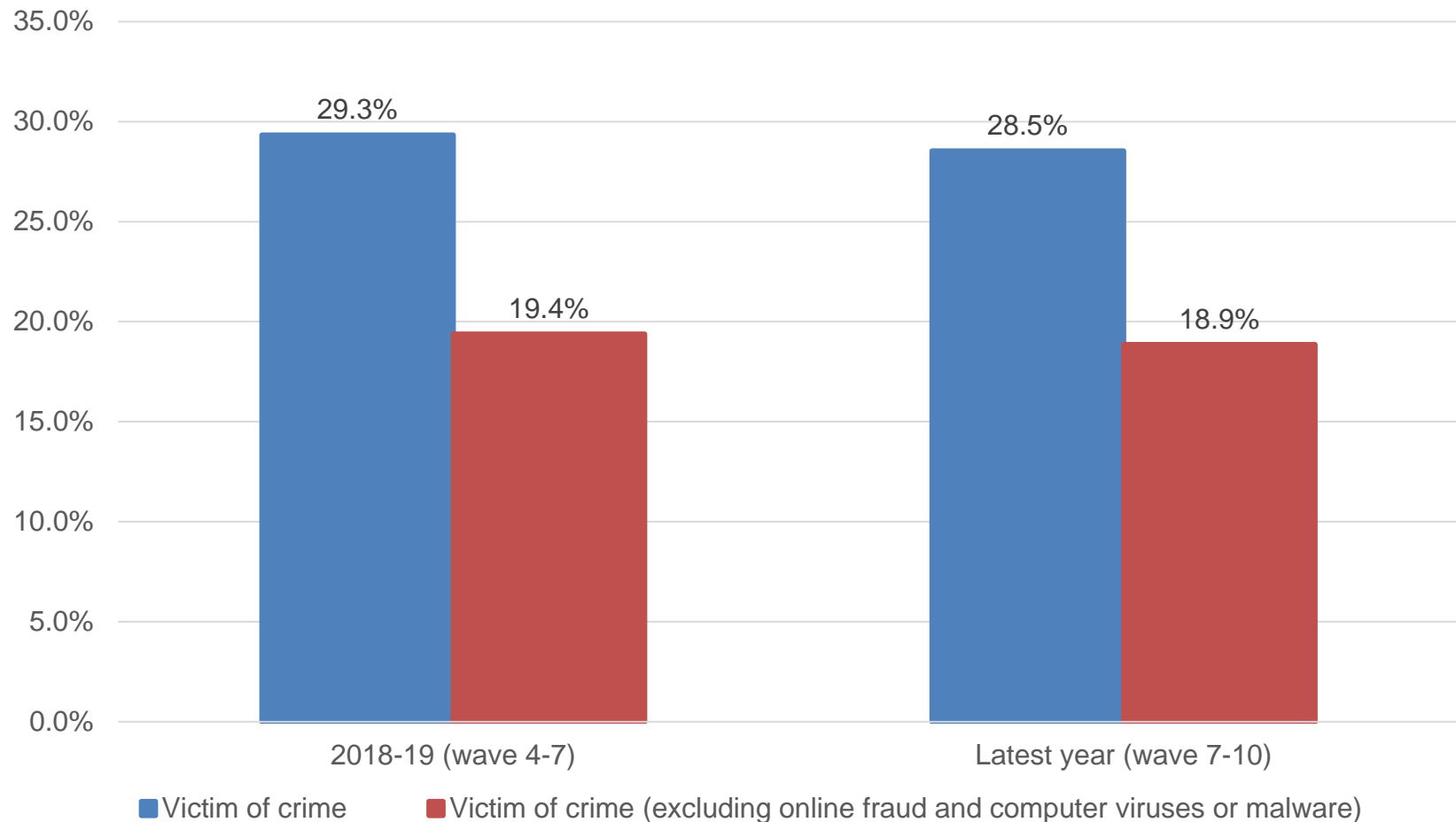
Wave	Start Date	End Date	Financial year
1	23 <sup>th</sup> August 2017	29 <sup>th</sup> September 2017	2017-18 *
2	12 <sup>th</sup> November 2017	2 <sup>nd</sup> January 2018	2017-18 *
3	10 <sup>th</sup> March 2018	31 <sup>st</sup> March 2018	2017-18 *
4	26 <sup>th</sup> May 2018	17 <sup>th</sup> June 2018	2018-19
5	25 <sup>th</sup> August 2018	30 <sup>th</sup> September 2018	2018-19
6	31 <sup>st</sup> October 2018	6 <sup>th</sup> January 2019	2018-19
7	2 <sup>nd</sup> February 2019	17 <sup>th</sup> February 2019	2018-19
8	14 <sup>th</sup> April 2019	2 <sup>nd</sup> June 2019	2019-20
9	18 <sup>th</sup> August 2019	21 <sup>st</sup> September 2019	2019-20
10	26 <sup>th</sup> November	21 <sup>st</sup> December 2019	2019-20

\* 2017-18 is the partial year comprising waves 1-3

In the latest year, 29% of respondents had been victim of a crime in the last 12 months. This reduces to 19% when online fraud and computer misuse are excluded.

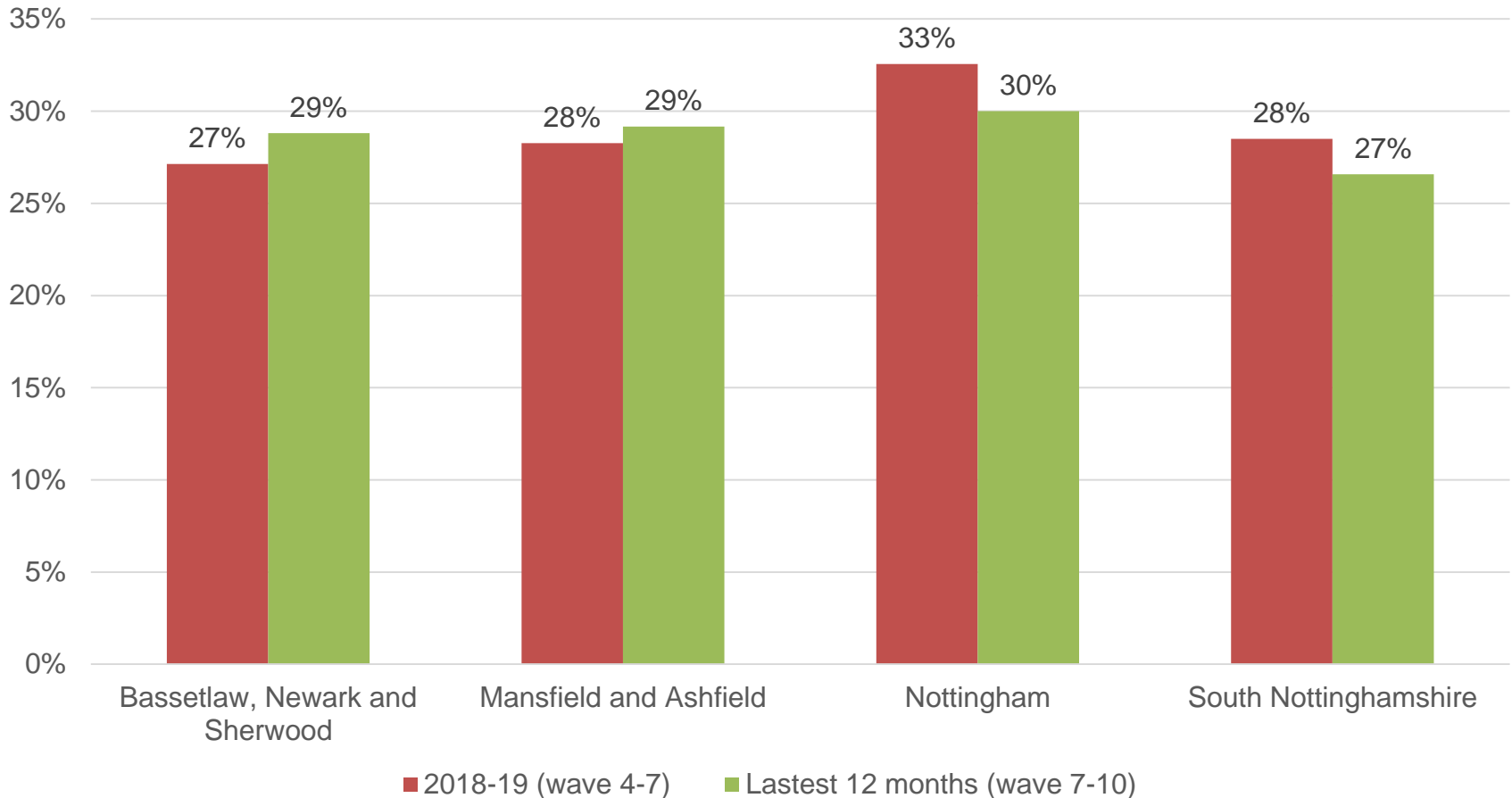
---

In the last 12 months, have you personally been a victim of crime?



In the latest period, respondents from Nottingham were most likely to have been a victim of crime; however crime prevalence has seen a marginal reduction in Nottingham and South Nottinghamshire, compared to increases in BNS and Mansfield and Ashfield

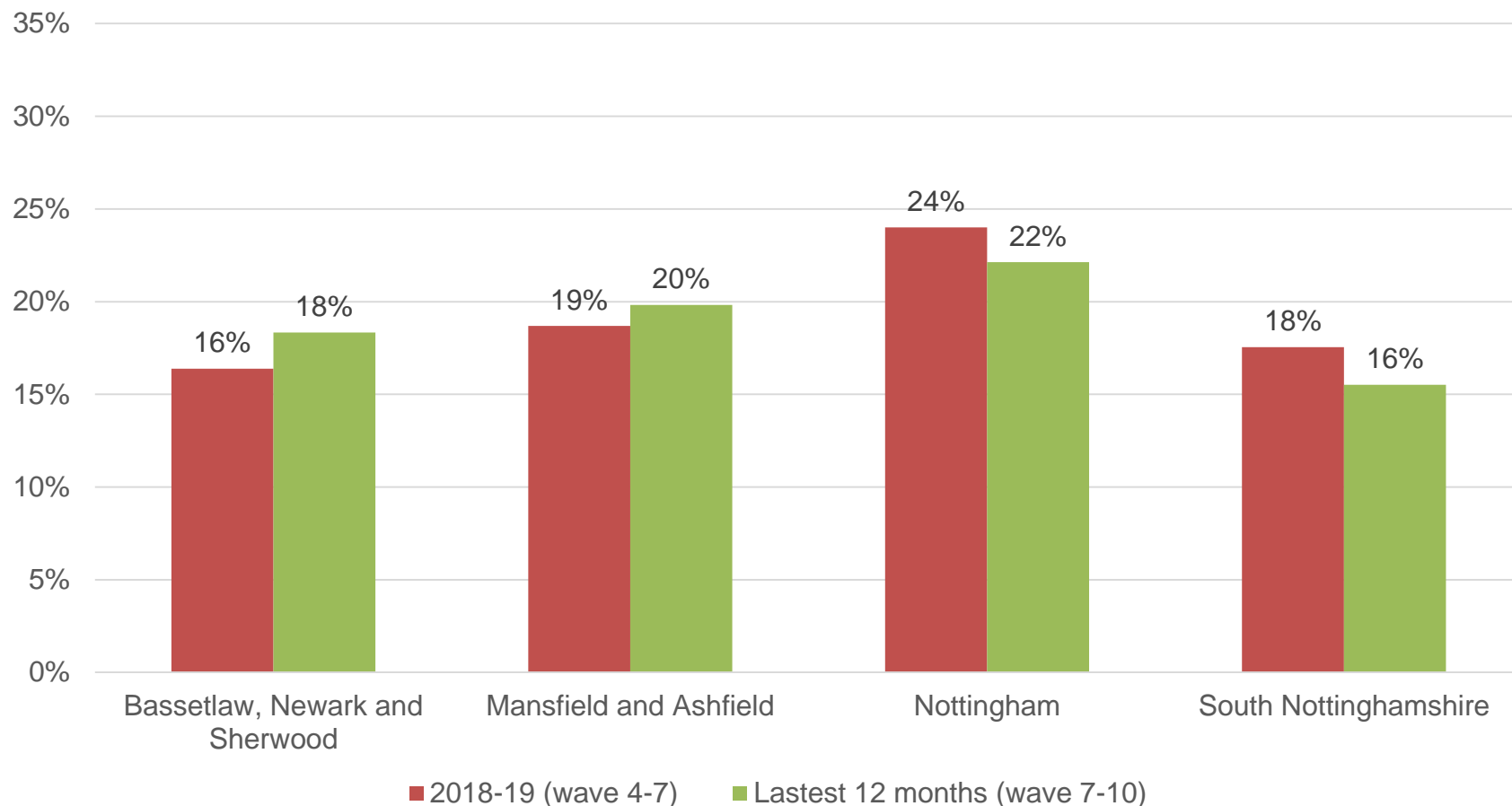
In the last 12 months, have you personally been a victim of crime?



Base Last 12 Months: Bassetlaw, Newark & Sherwood = 880, Mansfield and Ashfield = 852, Nottingham = 1,199, South Nottinghamshire = 1,289 Q In the last 12 months, have you personally been a victim of any of the following crime types?

When online fraud and computer misuse are excluded, in the latest year, respondents from Nottingham were most likely to have been a victim of crime.

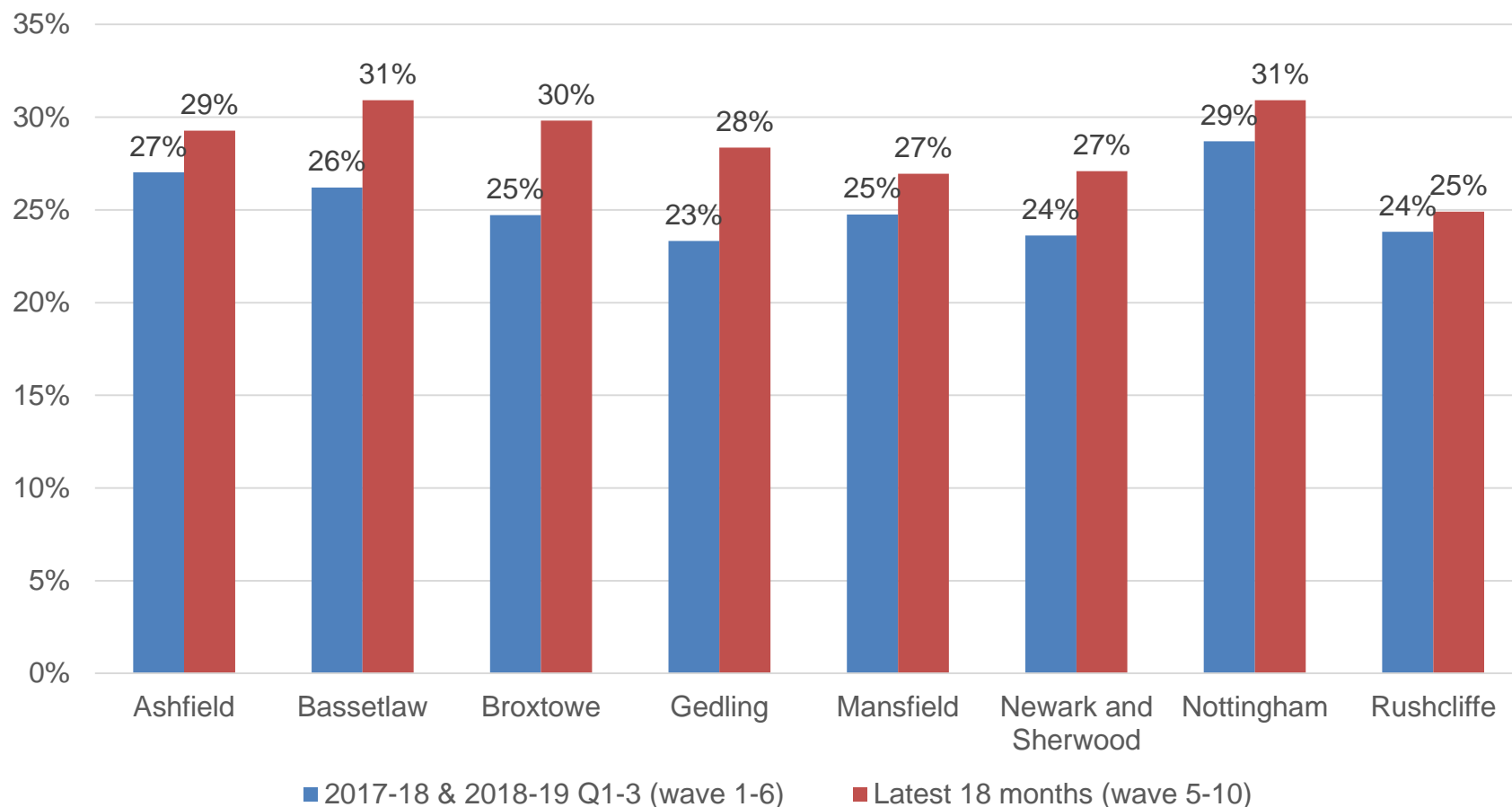
In the last 12 months, have you personally been a victim of crime? (excl. online fraud and computer viruses or malware)



Base Last 12 Months: Bassetlaw, Newark & Sherwood = 880, Mansfield and Ashfield = 852, Nottingham = 1,199, South Nottinghamshire = 1,289 Q: In the last 12 months, have you personally been a victim of any of the following crime types?

Local Authority data based on a rolling 18 month period shows that respondents from Nottingham and Bassetlaw were most likely to have been a victim of crime, while respondents from Rushcliffe, Mansfield and Newark and Sherwood were least likely

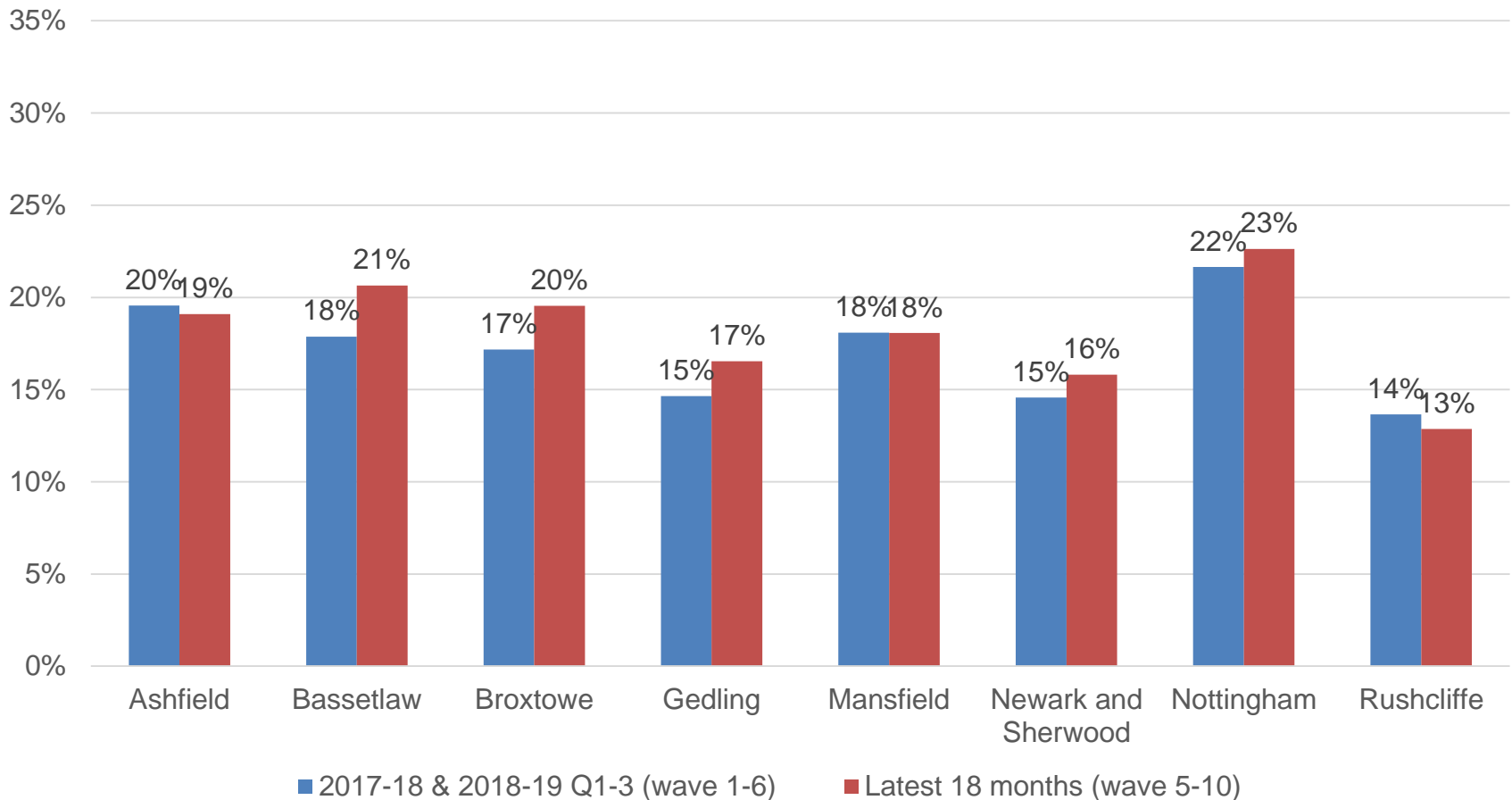
In the last 12 months, have you personally been a victim of crime?



Base Last 18 months: Ashfield = 684, Bassetlaw = 650, Broxtowe = 628, Gedling = 651, Mansfield = 587, Newark & Sherwood = 670, Nottingham = 1,792, Rushcliffe = 634 Q: In the last 12 months, have you personally been a victim of any of the following crime types?

When online fraud and computer misuse are excluded, in the latest year, respondents from Nottingham were most likely to have been a victim of crime, the increase between first 18 months and the latest 18 months is highest for Bassetlaw

In the last 12 months, have you personally been a victim of crime? (excl. online fraud and computer viruses or malware)

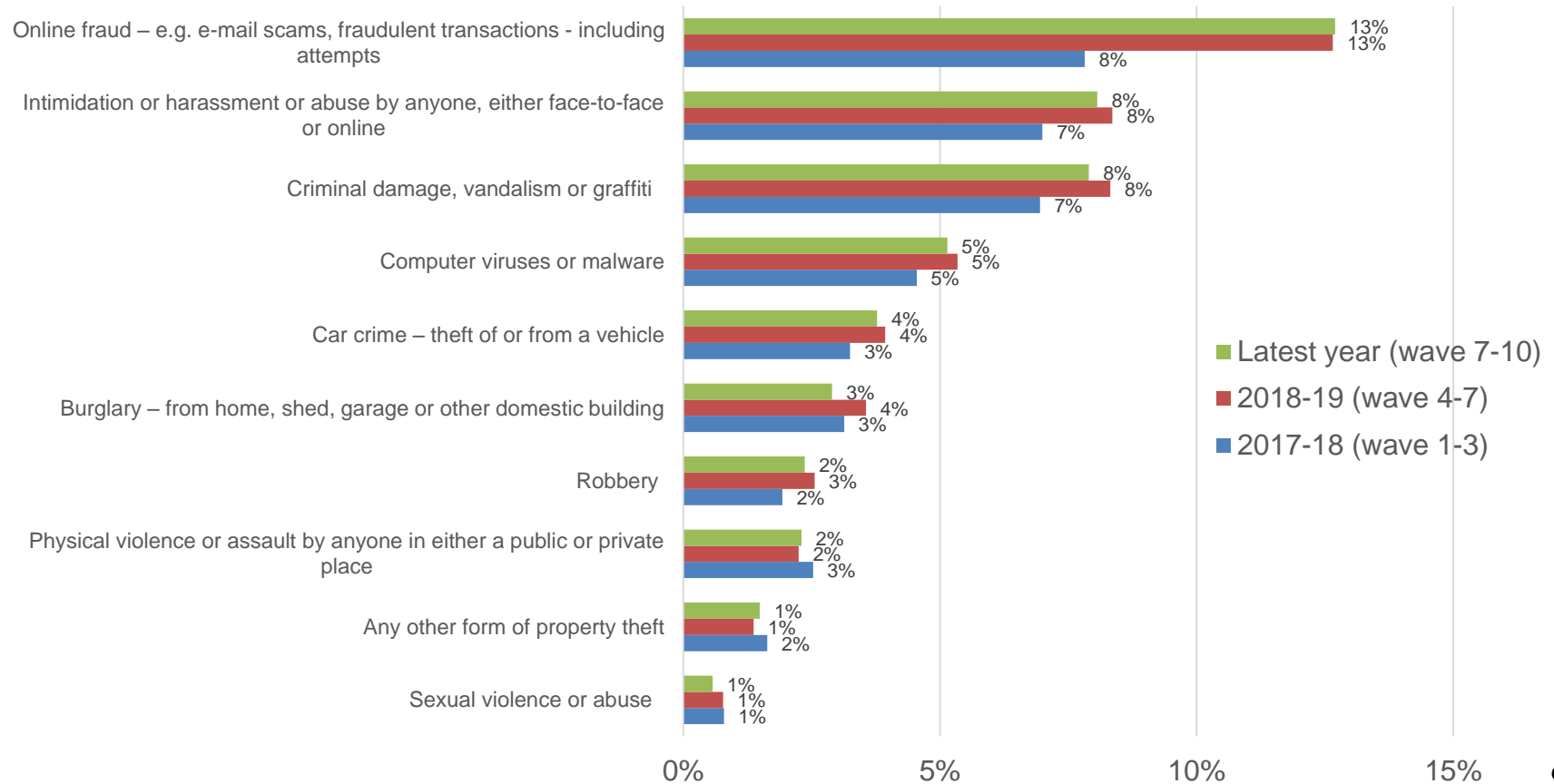


Base Last 18 months: Ashfield = 684, Bassetlaw = 650, Broxtowe = 628, Gedling = 651, Mansfield = 587, Newark & Sherwood = 670, Nottingham = 1,792, Rushcliffe = 634 Q: In the last 12 months, have you personally been a victim of any of the following crime types?

# In the latest year, 29% of respondents had been victim of a crime; online fraud remains the most commonly experienced crime

- 3% of respondents had experienced hate-related crime and 2% had experienced domestic violence/abuse related crime in the last 12 months

In the last 12 months, have you personally been a victim of any of the following crime types?

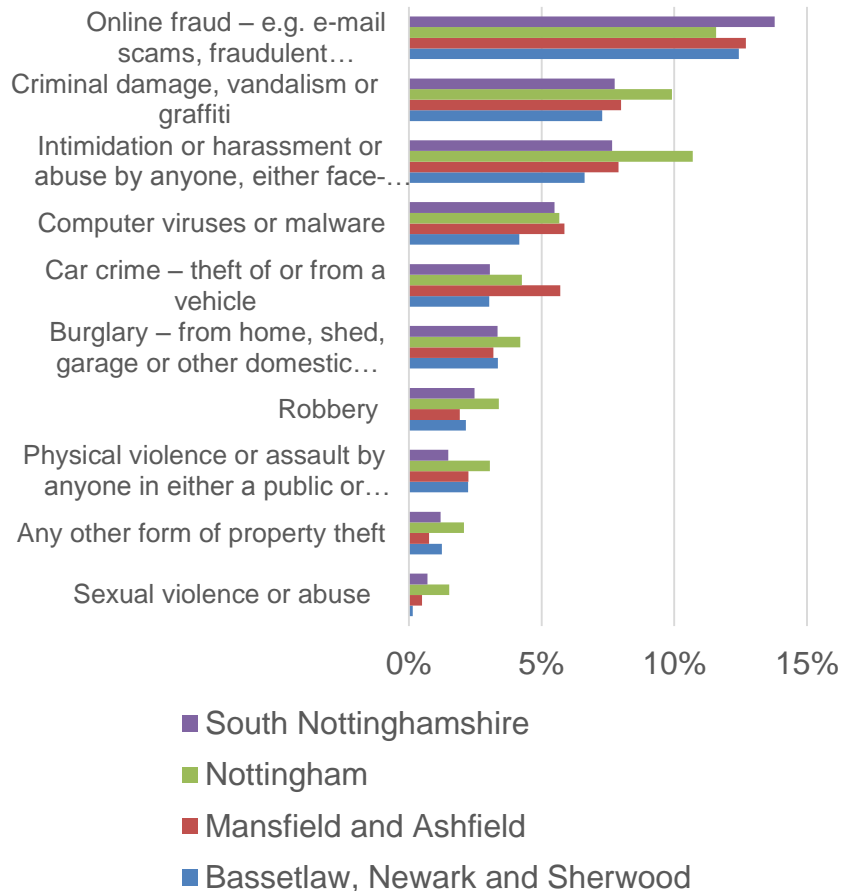


Base: 2017-18 = 3,152, 2018 – 19 = 4,251, Last 12 months = 4,221

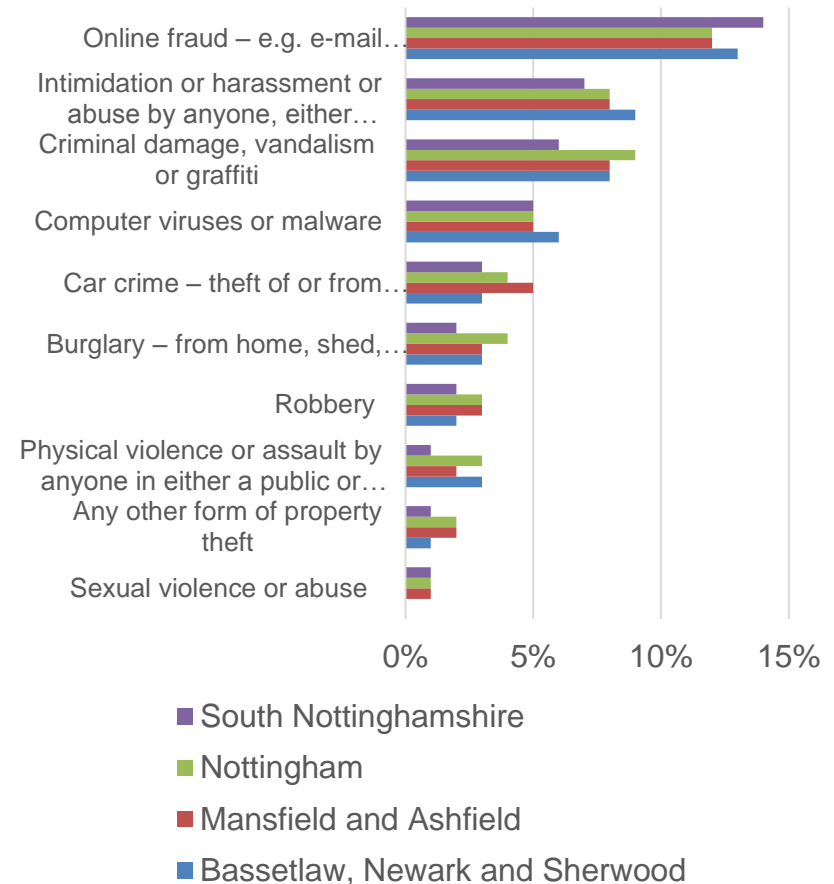
Q: In the last 12 months, have you personally been a victim of any of the following crime types?

# In the latest year, 27% of respondents from South Nottinghamshire, 29% from Bassetlaw, Newark and Sherwood, 29% from Mansfield and Ashfield and 30% from Nottingham had been victim of a crime

In the last 12 months, have you personally been a victim of any of the following crime types? – 2018-19



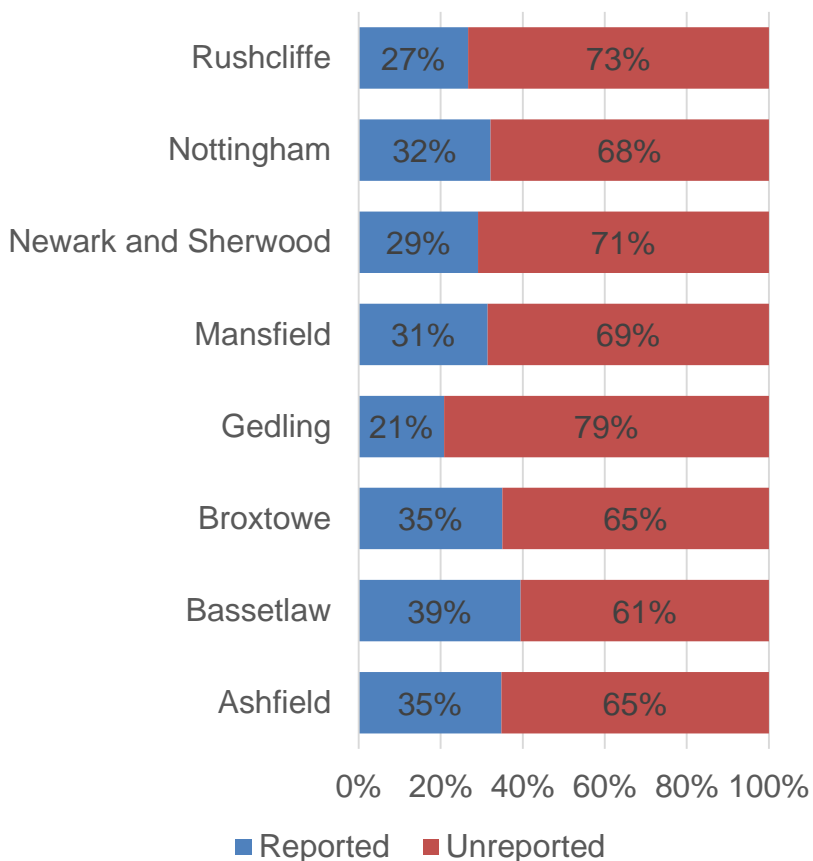
In the last 12 months, have you personally been a victim of any of the following crime types? – Latest year



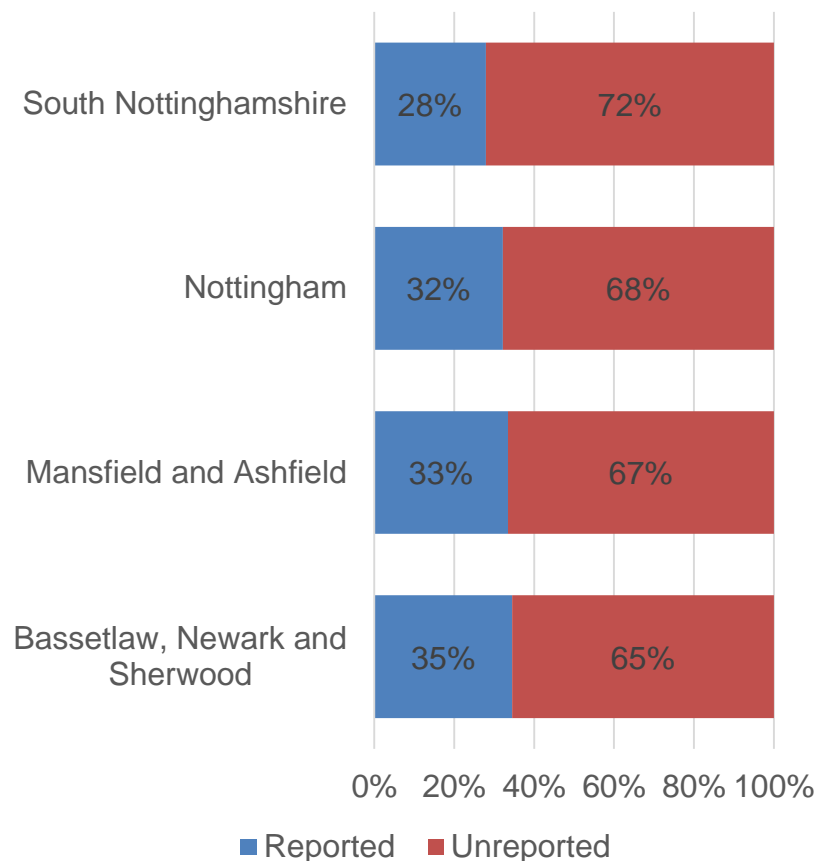
Base Last 12 Months: Bassetlaw, Newark & Sherwood = 880, Mansfield and Ashfield = 852, Nottingham = 1,199, South Nottinghamshire = 1,289 Q: In the last 12 months, have you personally been a victim of any of the following crime types?

In the latest 2 years, the proportion of crimes that had been reported was 35% in Bassetlaw, Newark and Sherwood, 33% in Mansfield and Ashfield, 32% in Nottingham, and 28% in South Nottinghamshire.

Proportion of reported and unreported crimes – Latest 2 years  
(wave 3-10)

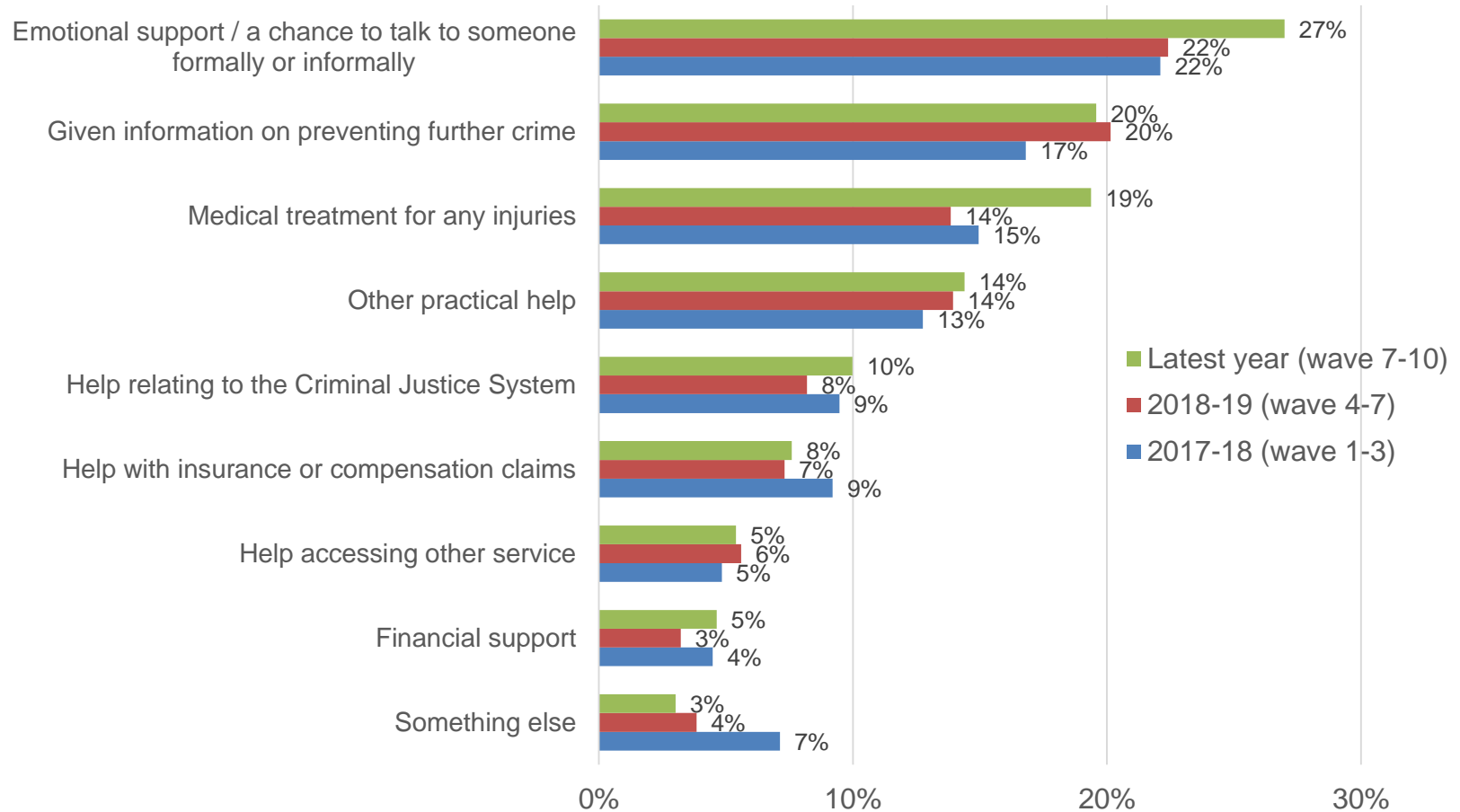


Proportion of reported and unreported crimes – Latest 2 years  
(wave 3-10)



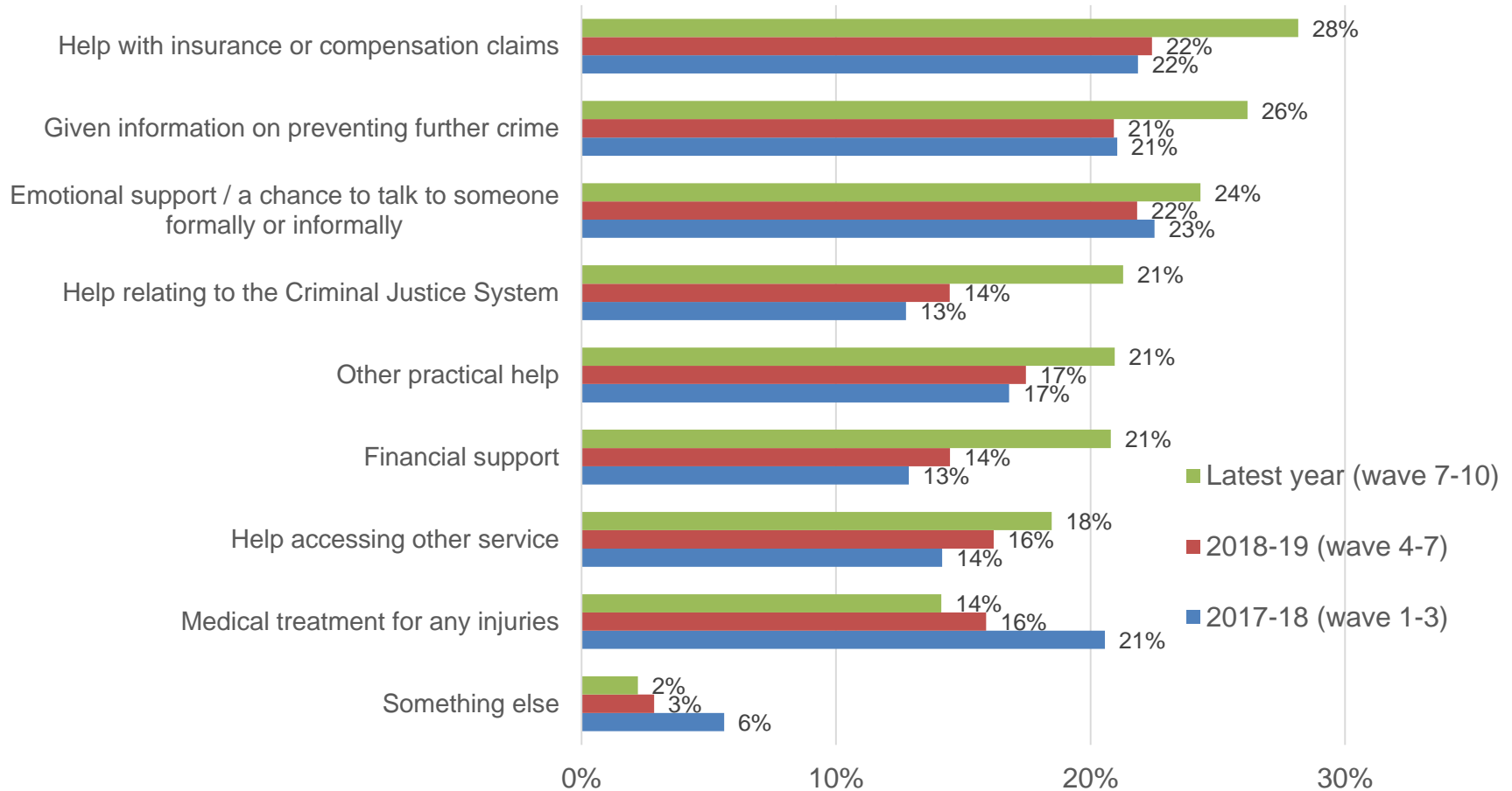
# In the latest year, 44% of respondents who had been a victim of crime had received some form of information, advice or support

Did you receive any of the following types of information, advice or support when you were the victim of this crime?



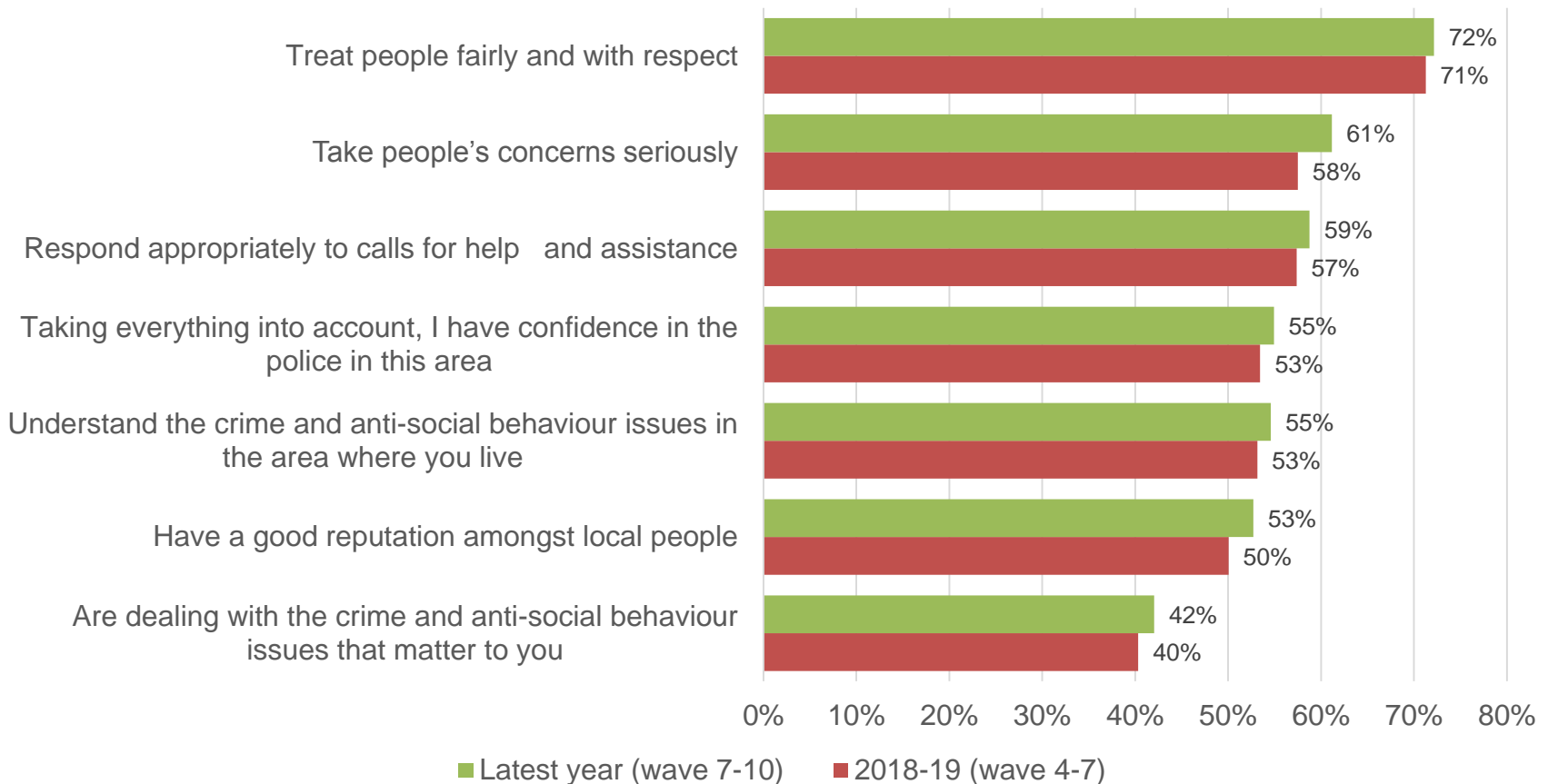
# In the latest year, 48% of respondents who had been a victim of crime would have liked to have received some form of information, advice or support

Would you have liked to receive any of the following types of information, advice or support when you were the victim of this crime?



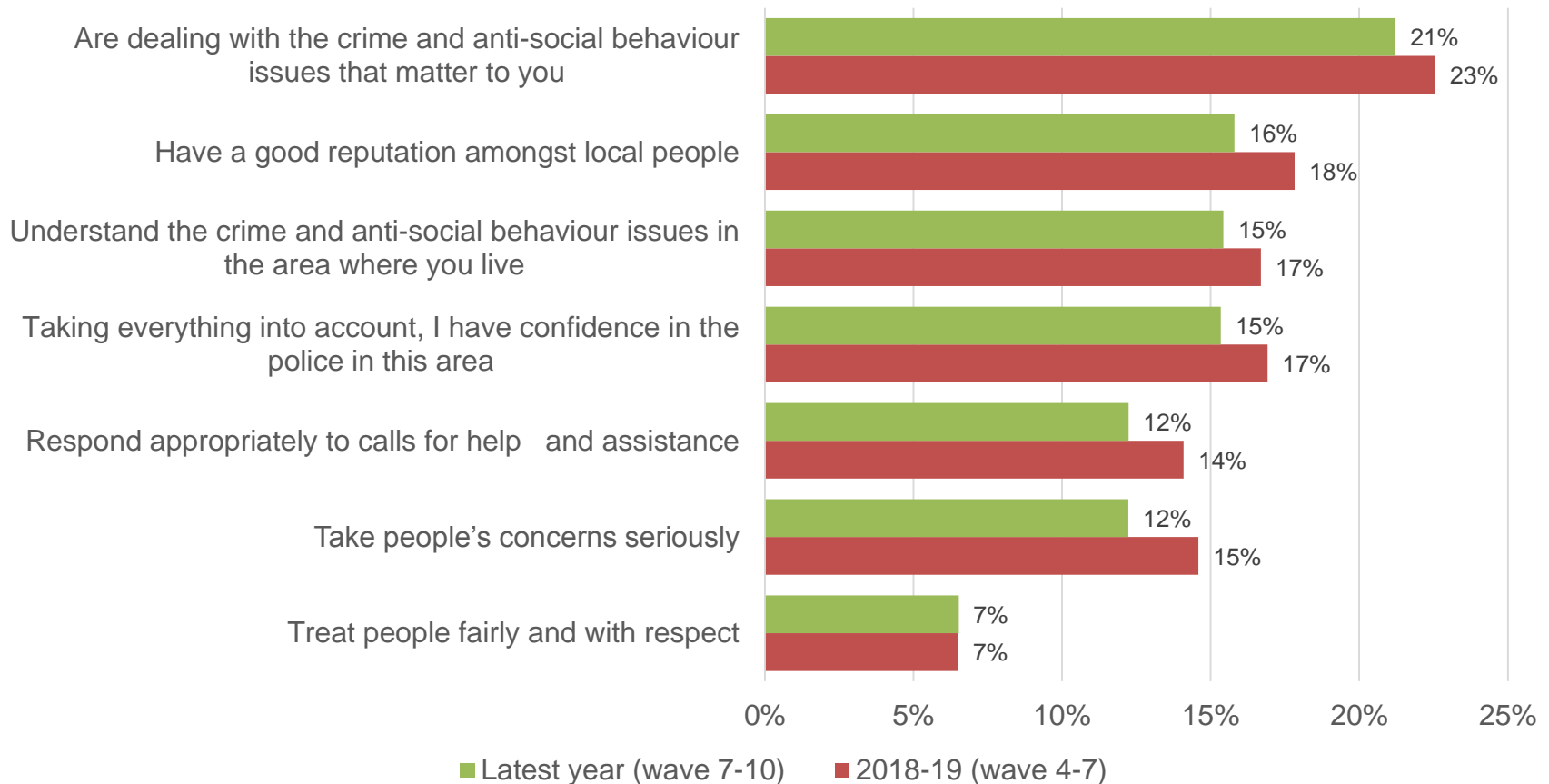
Excluding those who answered 'don't know', in the latest year 72% agreed that the police in their local area treat people fairly and with respect.

Please say how much you agree or disagree with each of the following statements about the police in your local area: - **Strongly Agree & Agree** – Excluding 'Don't know'



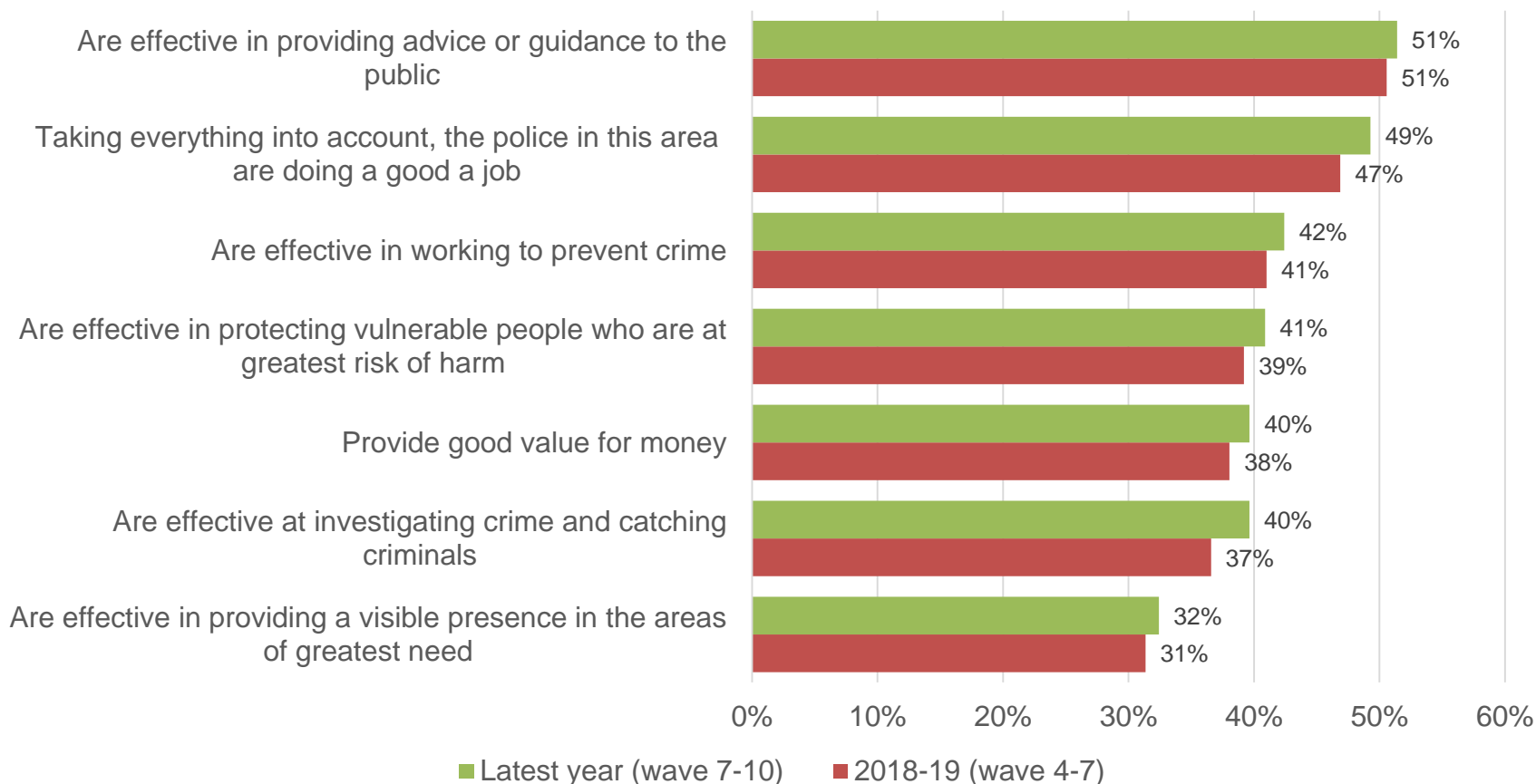
# Excluding those who answered 'don't know', in the latest year 21% of respondents disagreed that the police in their local area are dealing with the crime and anti-social behavior issues that matter to them

Please say how much you agree or disagree with each of the following statements about the police in your local area: - **Strongly Disagree & Disagree** – Excluding 'Don't know'



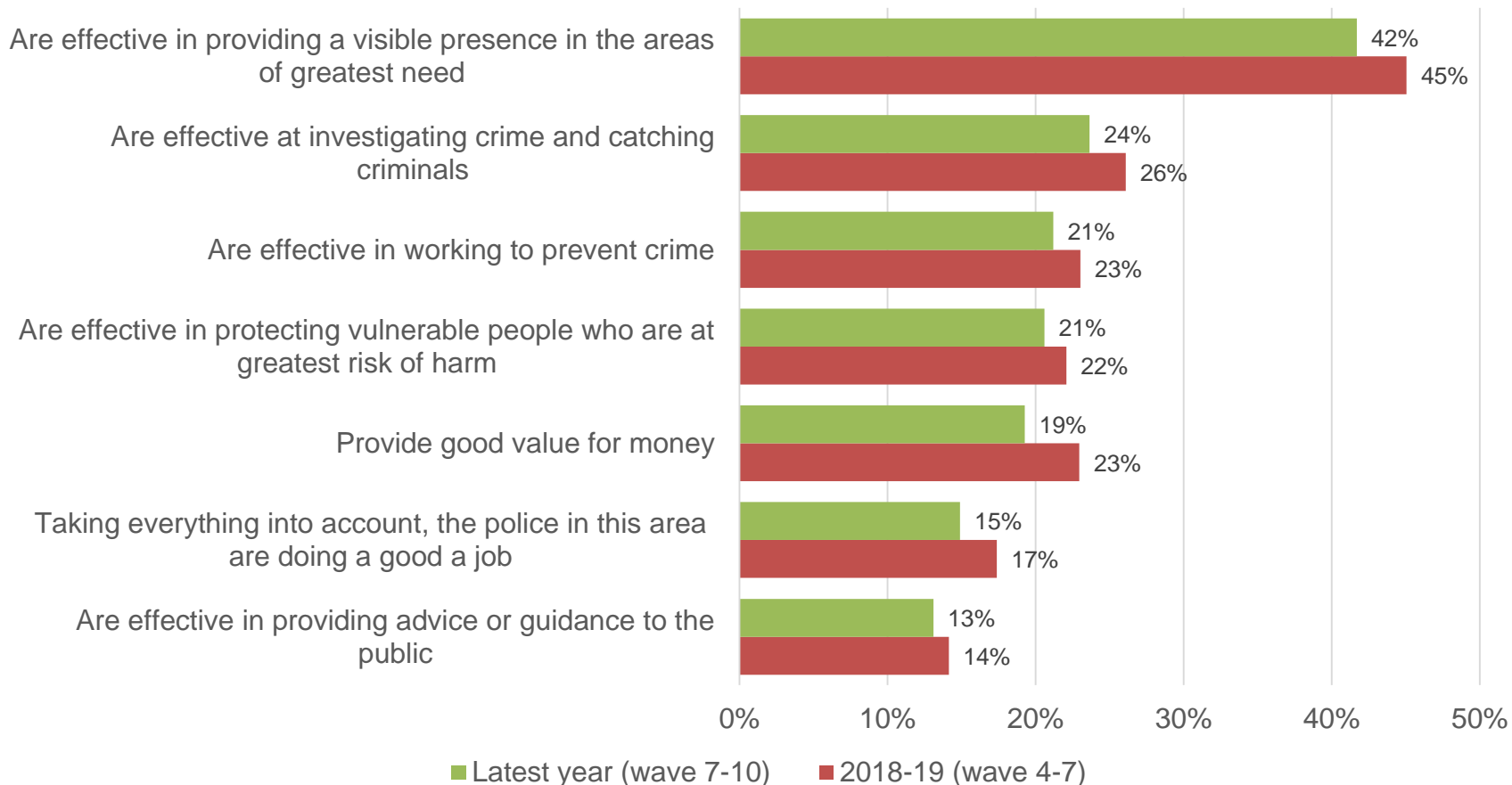
# Excluding those who answered 'don't know', in the latest year 51% agreed that the police in their local area are effective in providing advice or guidance to the public

Please say how much you agree or disagree with each of the following statements about the police in your local area: - **Strongly Agree & Agree** – Excluding 'Don't know'



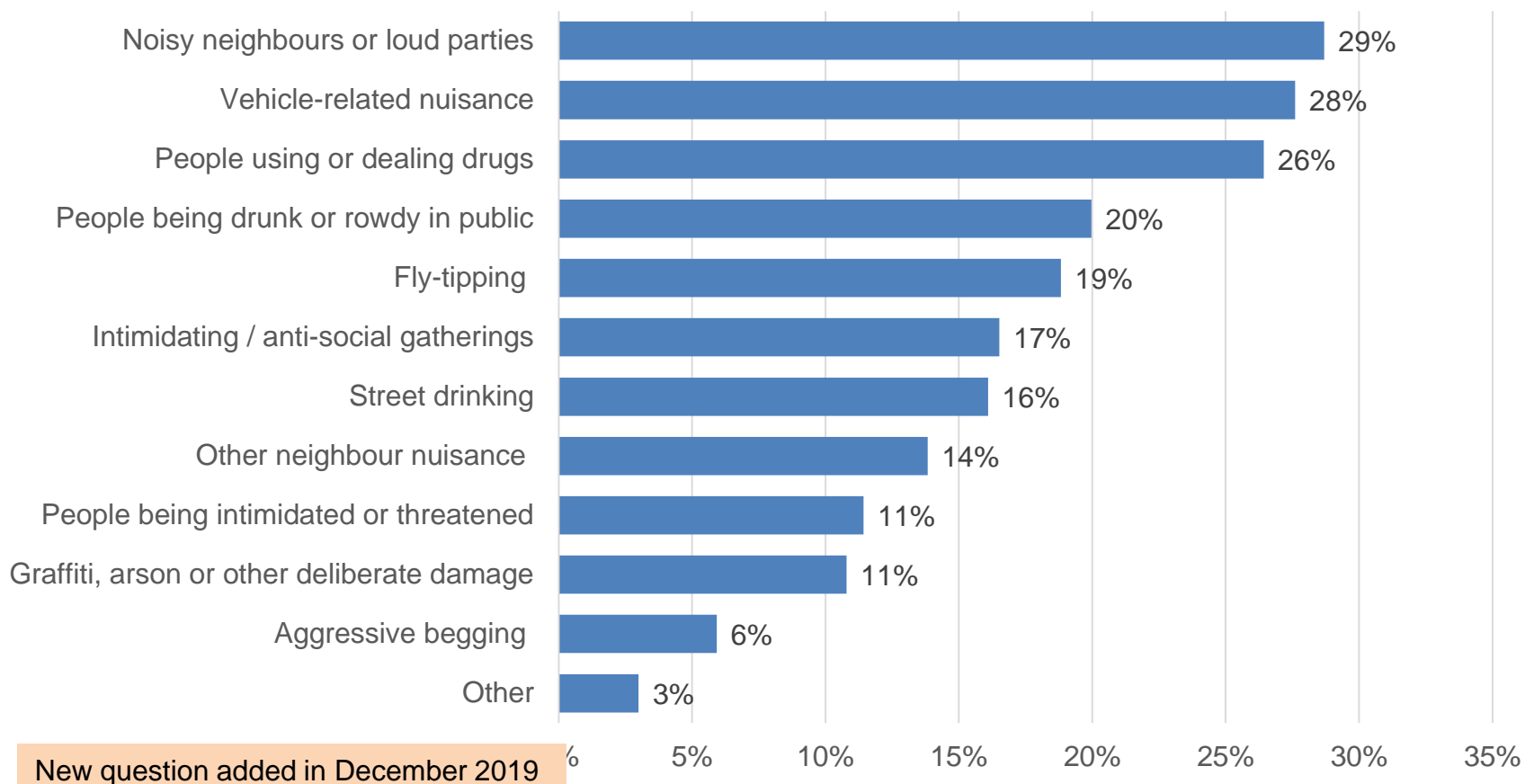
# Excluding those who answered 'don't know', in the latest year 42% of respondents disagreed that the police in their local area are effective in providing a visible presence in the area of greatest need

Please say how much you agree or disagree with each of the following statements about the police in your local area: - **Strongly Disagree & Disagree** – Excluding 'Don't know'



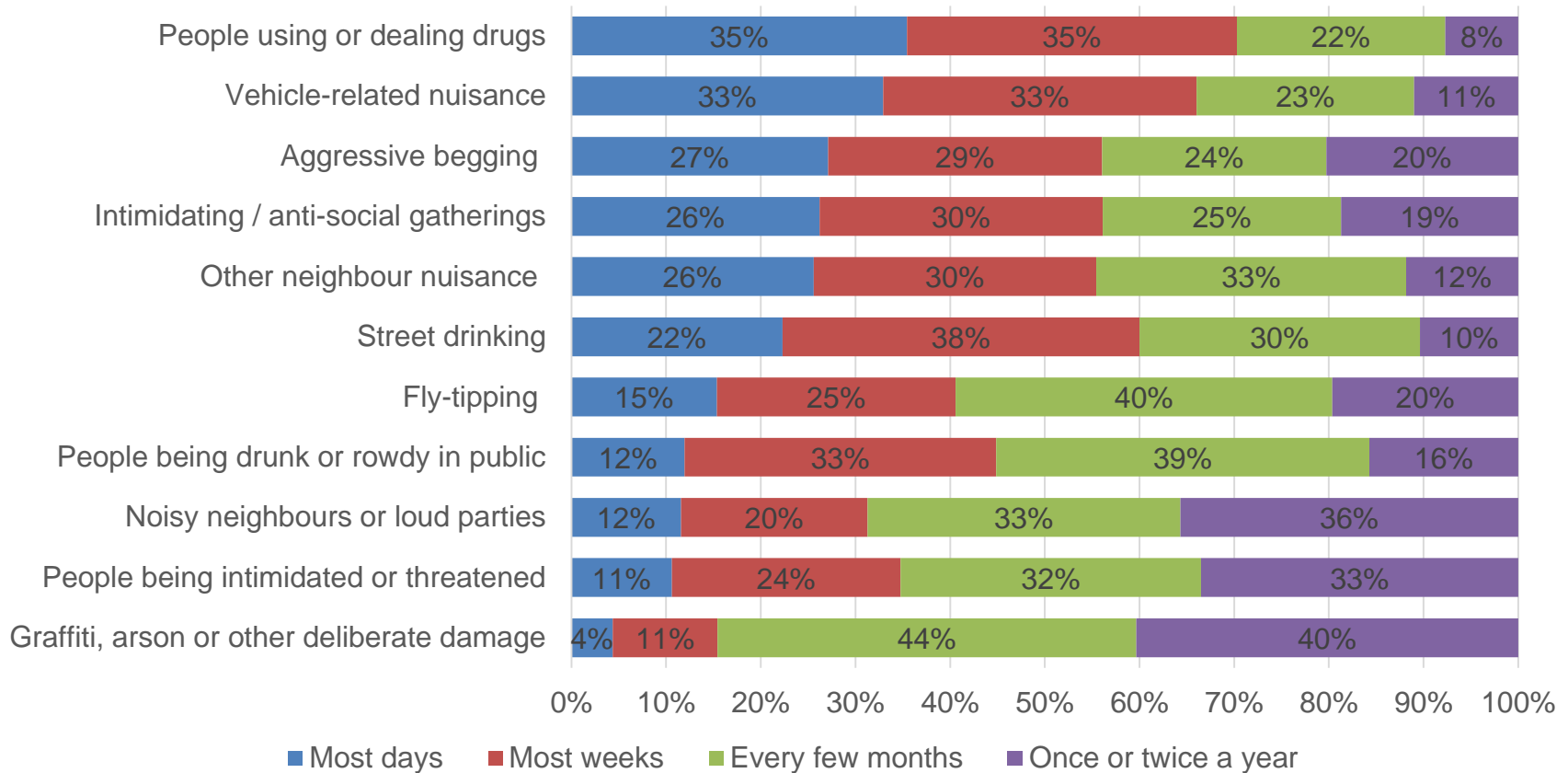
# Noisy neighbours or loud parties, vehicle-related nuisance and people using or dealing drugs are the top 3 types of ASB personally experienced by respondents over the last 12 months

Which of the following types of anti-social behaviour (ASB), if any, have you personally experienced **in your local neighbourhood** over the last 12 months?



# 70% of respondents who had personally experienced people using or dealing drugs in their local neighbourhood experienced this most weeks or more often

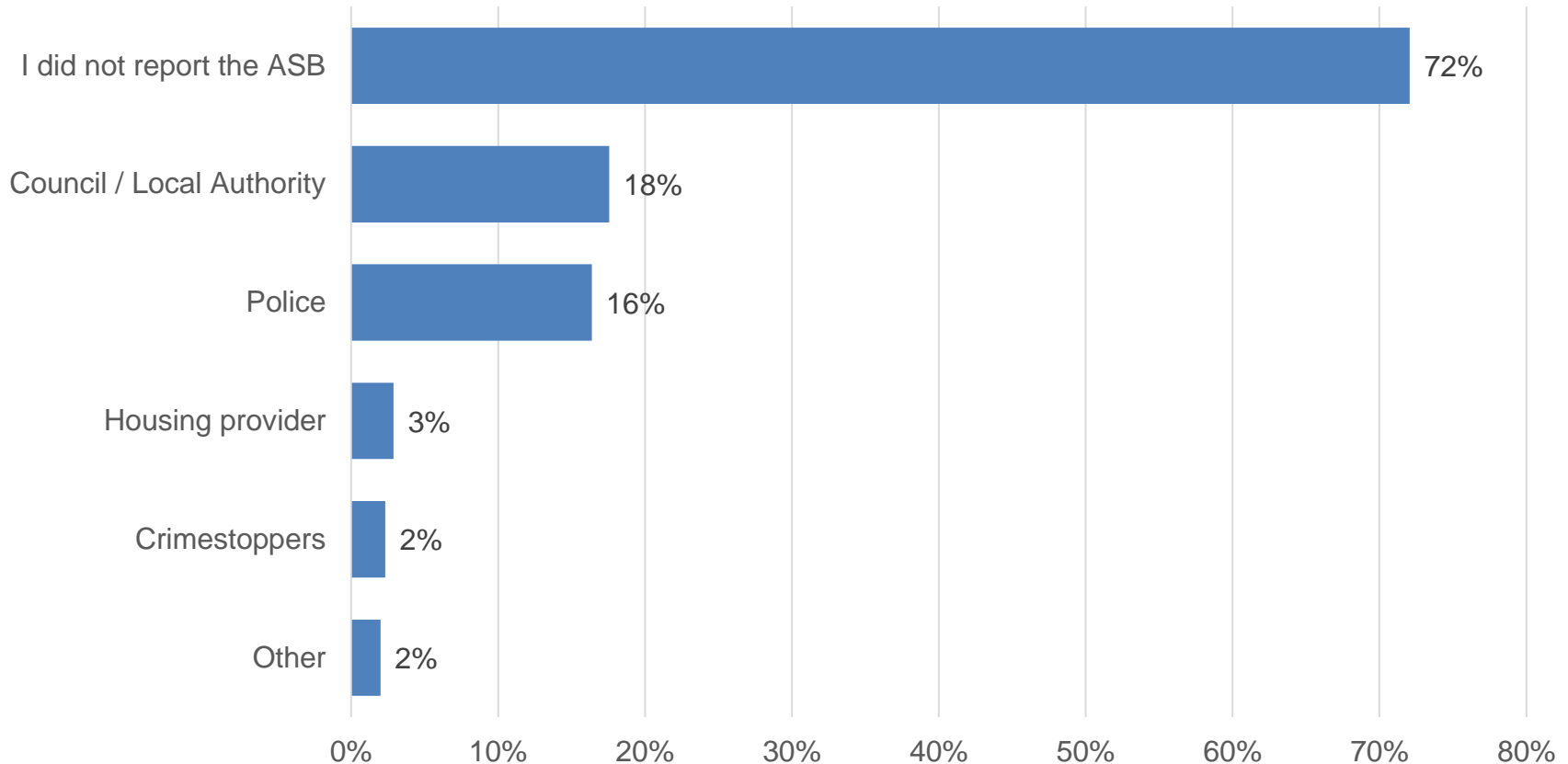
If you have experienced one or more types of ASB, please indicate how often this has happened



New question added in December 2019

## 72% of respondents that had personally experienced ASB in their local neighbourhood over the last year did not report it to any agency

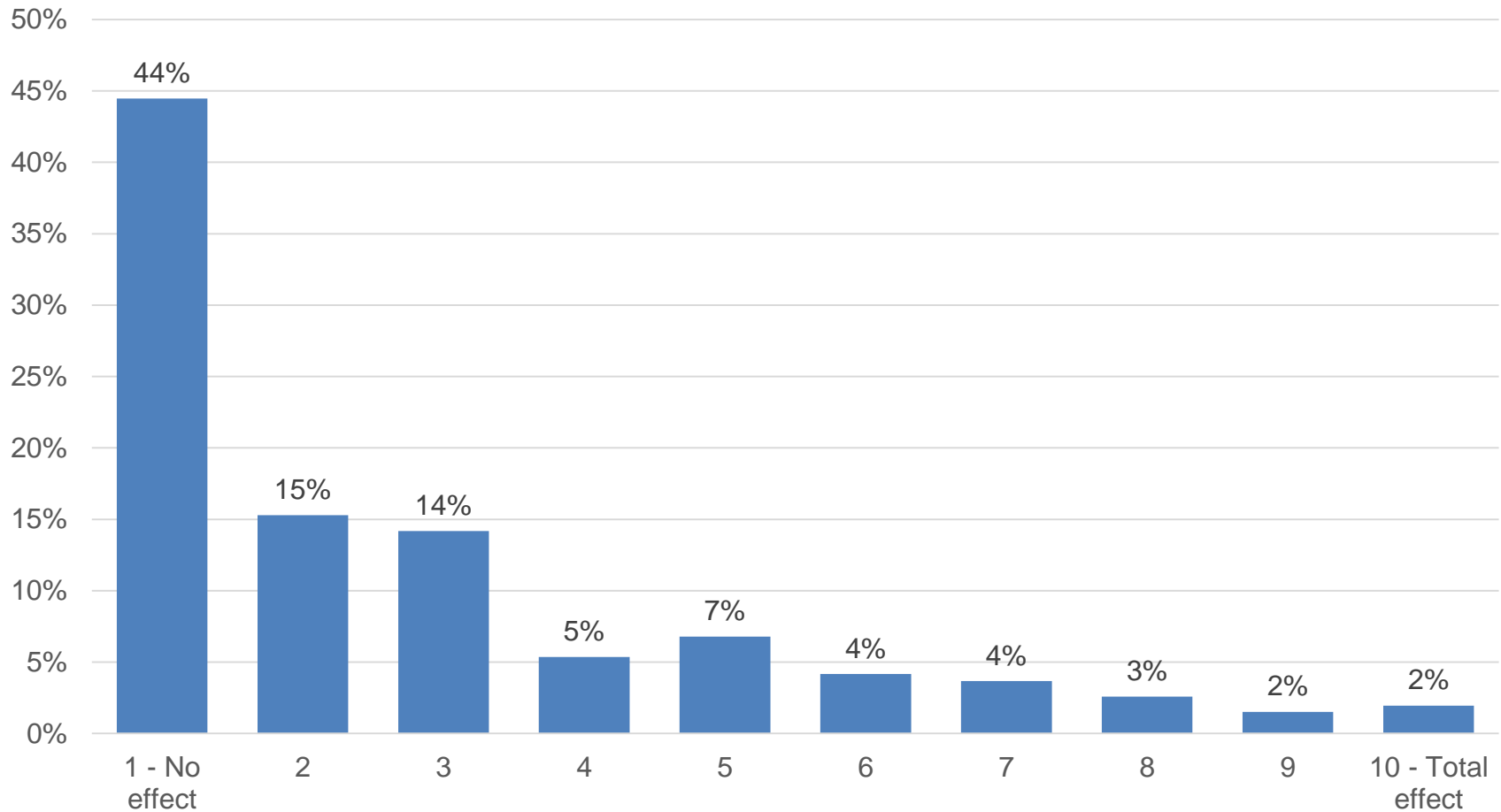
If you have experienced one or more forms of ASB over the last year, which of the following agencies, if any, did you report the issue(s) to?



New question added in December 2019

ASB has 'no effect' on the quality of life of 44% of respondents. The mean ASB impact score was 2.8, with 1 being low and 10 being high.

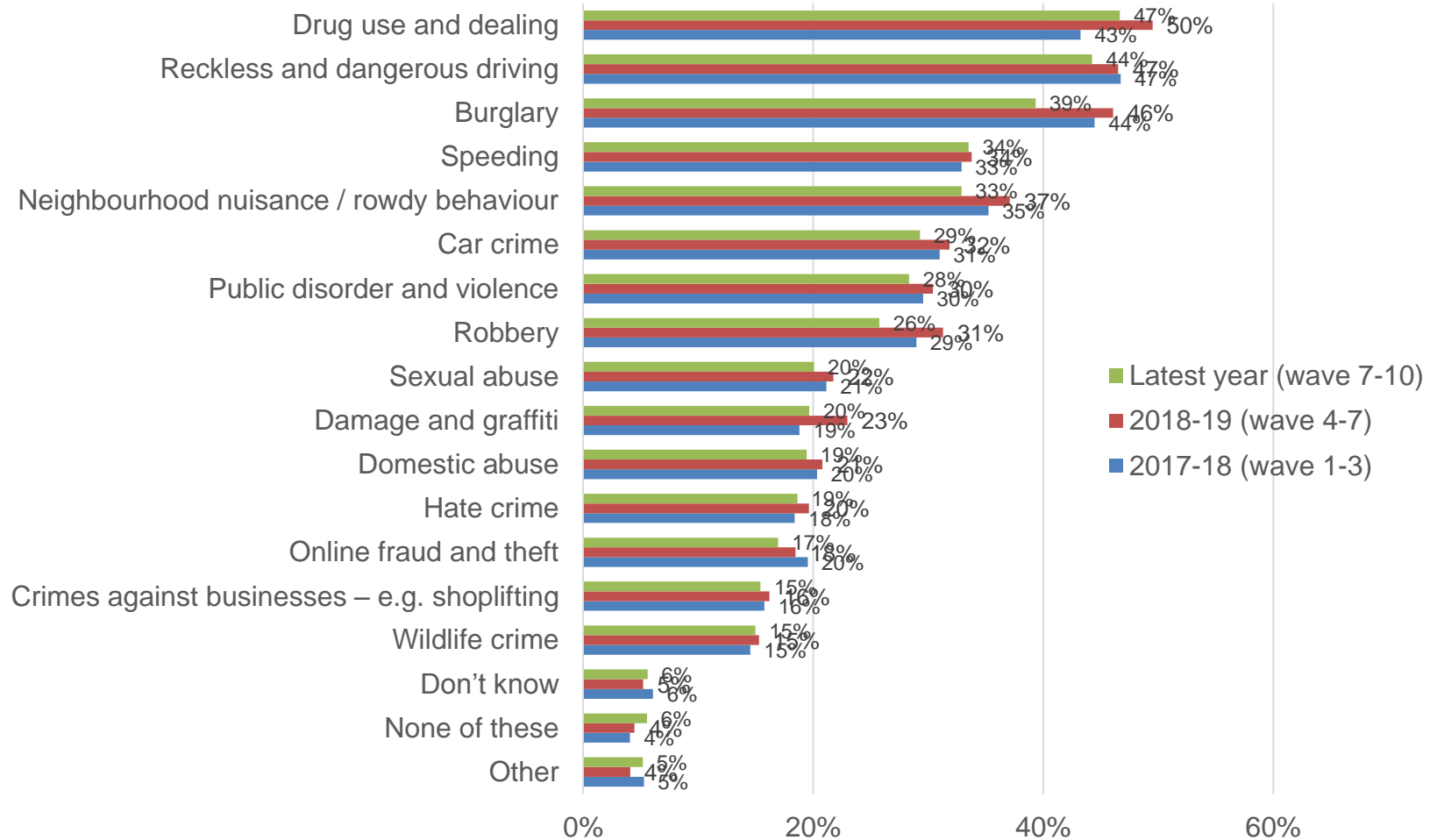
### How much is your own quality of life affected by ASB?



New question added in December 2019

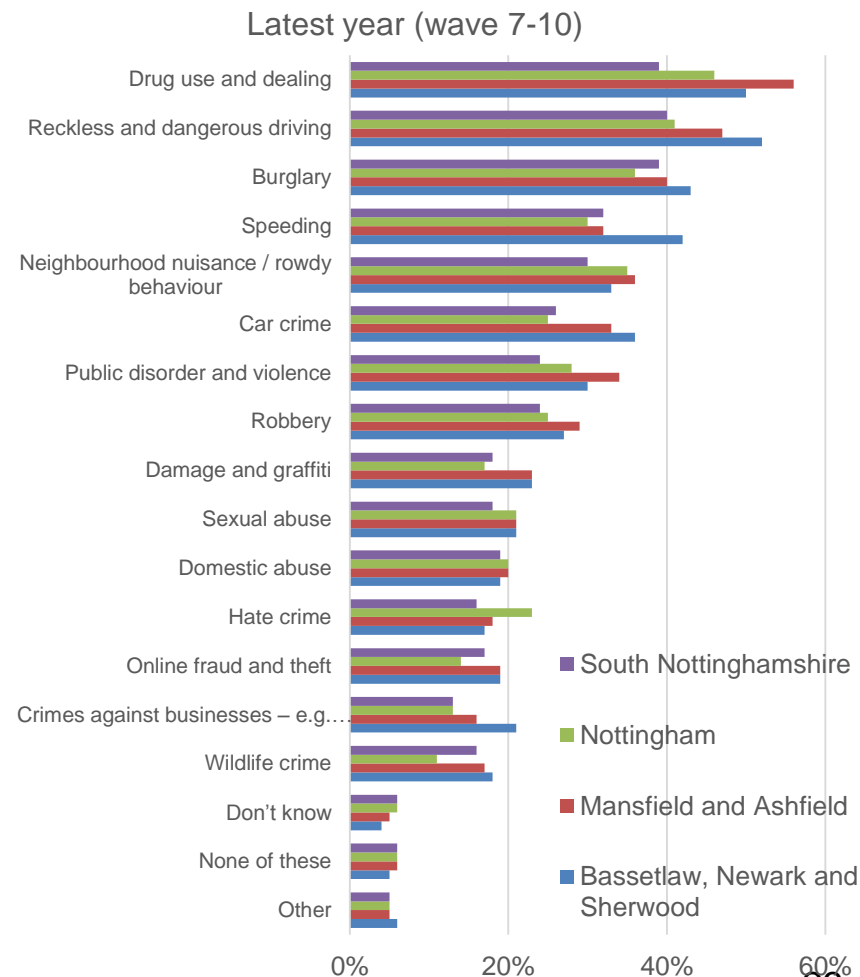
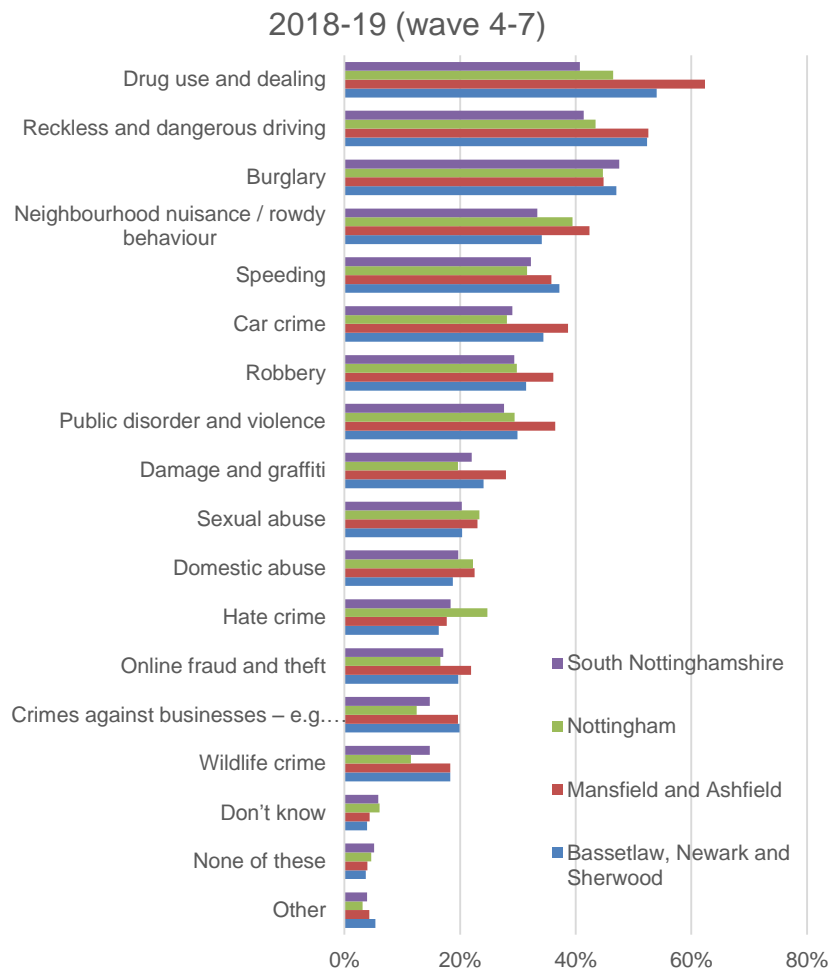
# Drug use and dealing, reckless and dangerous driving, and burglary remain the top crime and ASB issues respondents would like to see tackled in their area.

Are there any specific crime or anti-social behaviour issues that you would like to see the police and other agencies do more to tackle in your area?



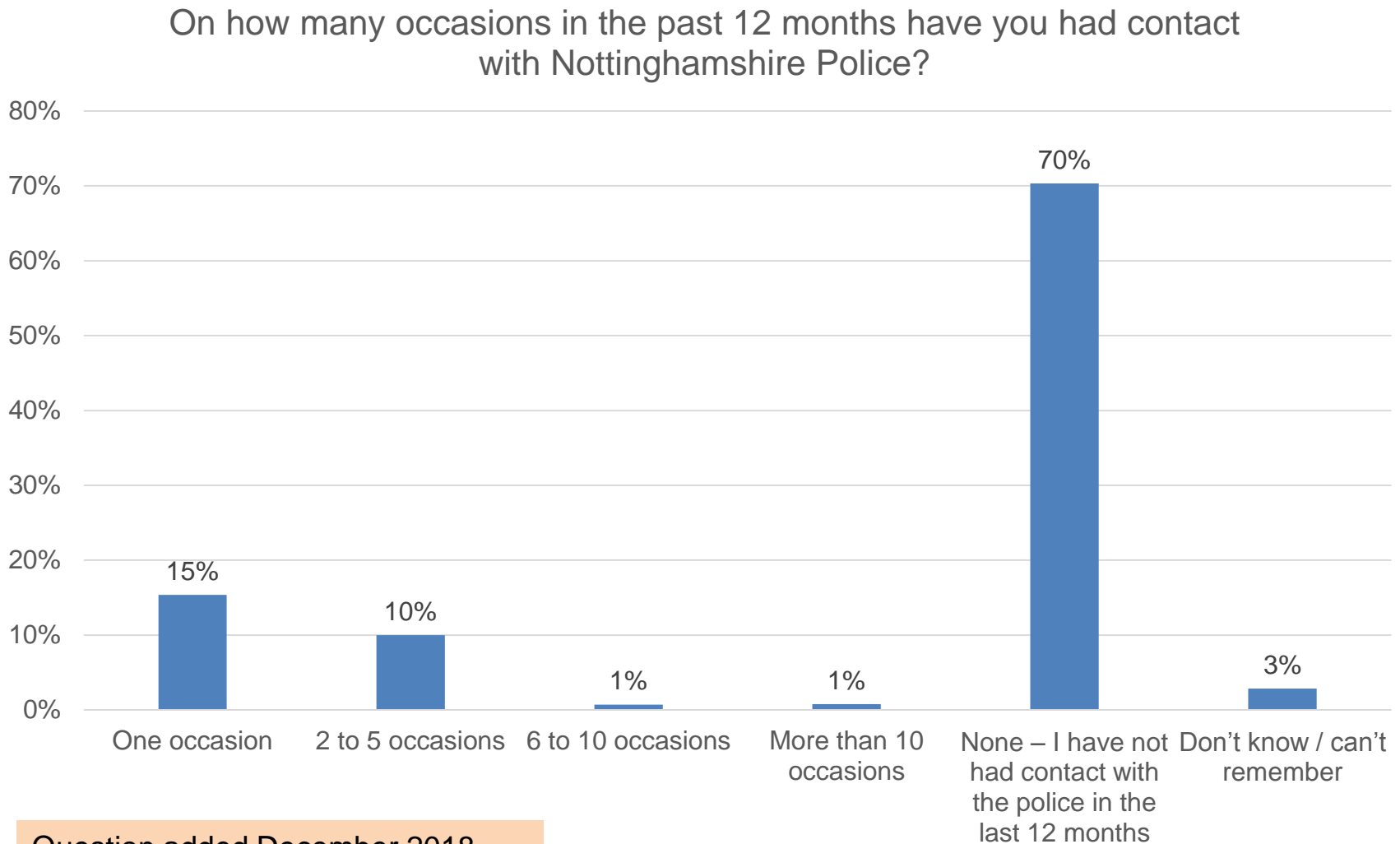
# Drug use and dealing, reckless and dangerous driving, and burglary remain the top 3 issues residents would like to see the police and other agencies do more to tackle in all CSP areas.

Are there any specific crime or anti-social behaviour issues that you would like to see the police and other agencies do more to tackle in your area?



Base: 2017-18 = 3,094, 2019-18 = 4,051, Last 12 months = 3,906 Q: And are there any specific crime or anti-social behaviour issues that you would like to see the police and other agencies do more to tackle in your area?

## 27% respondents had contacted Nottinghamshire Police in the last 12 months

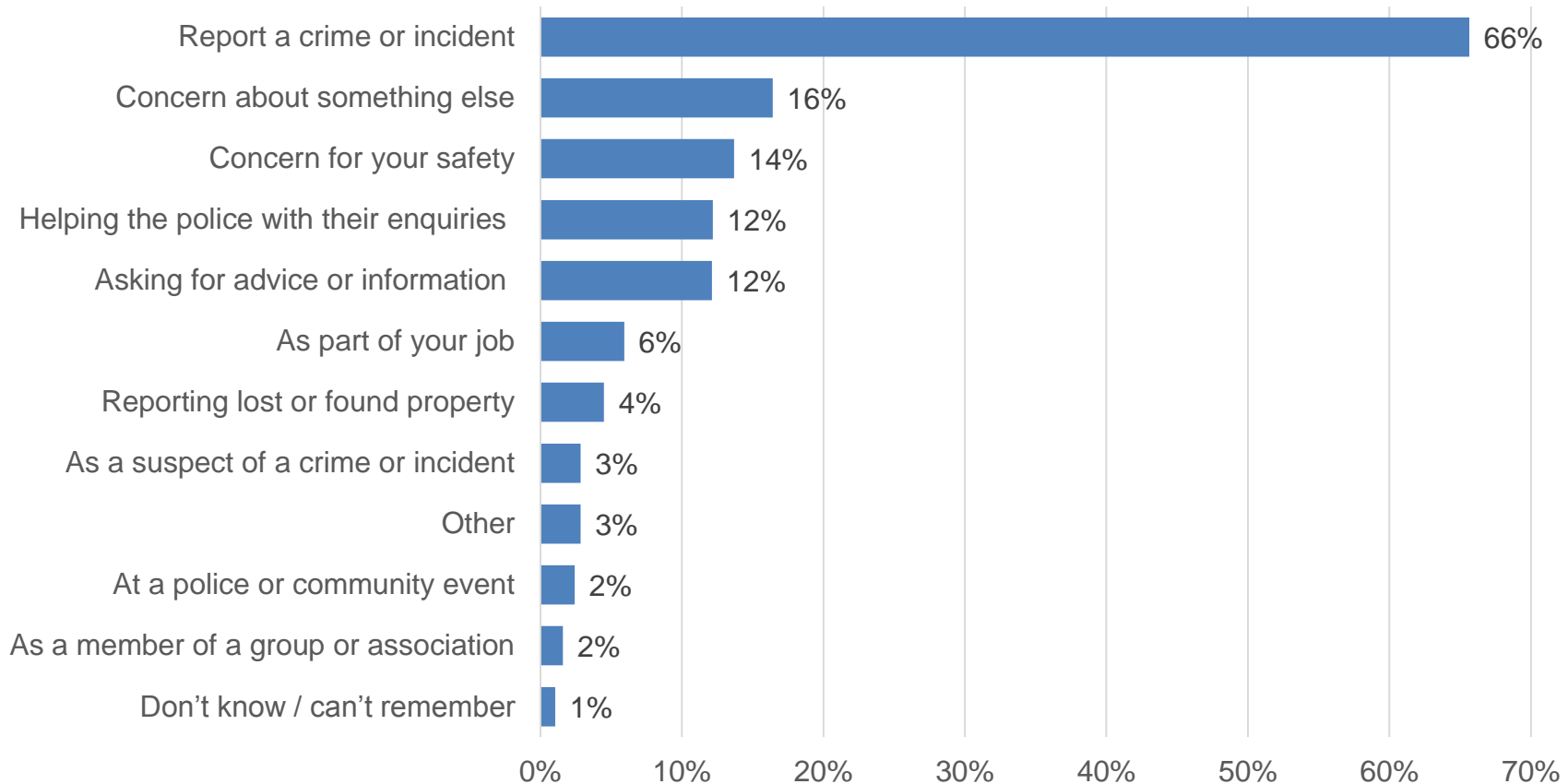


Question added December 2018

Base: Last 12 months = 3,979 Q: On how many occasions in the past 12 months have you had contact with Nottinghamshire Police?

# Of the 27% of respondents that had contacted the police in the last 12 months, 66% had done so to report a crime or incident

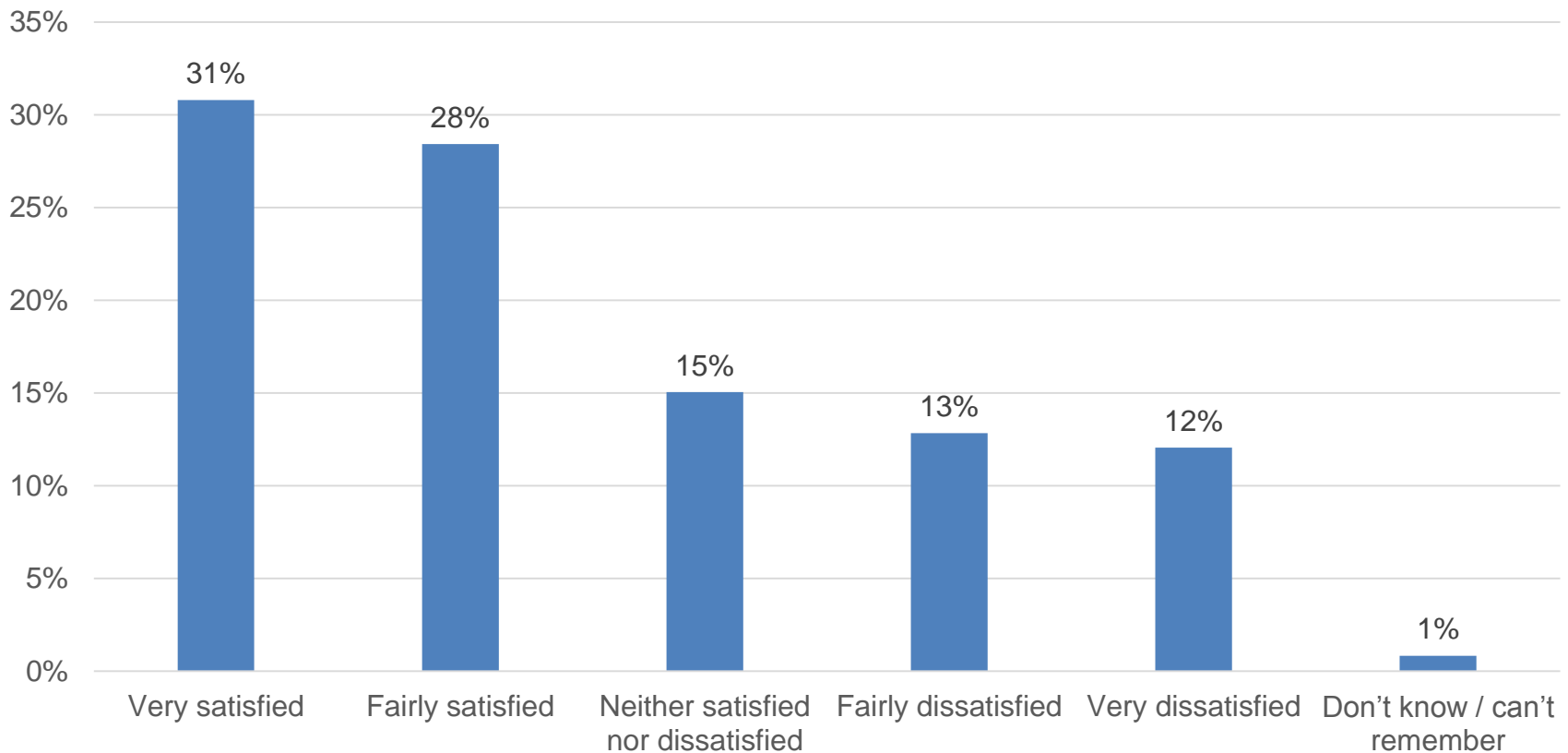
Thinking back to the occasions that you have had contact with the police over the last 12 months, what were the reasons?



Question added December 2018

# 59% were satisfied with the service they received from Nottinghamshire Police; 25% were dissatisfied

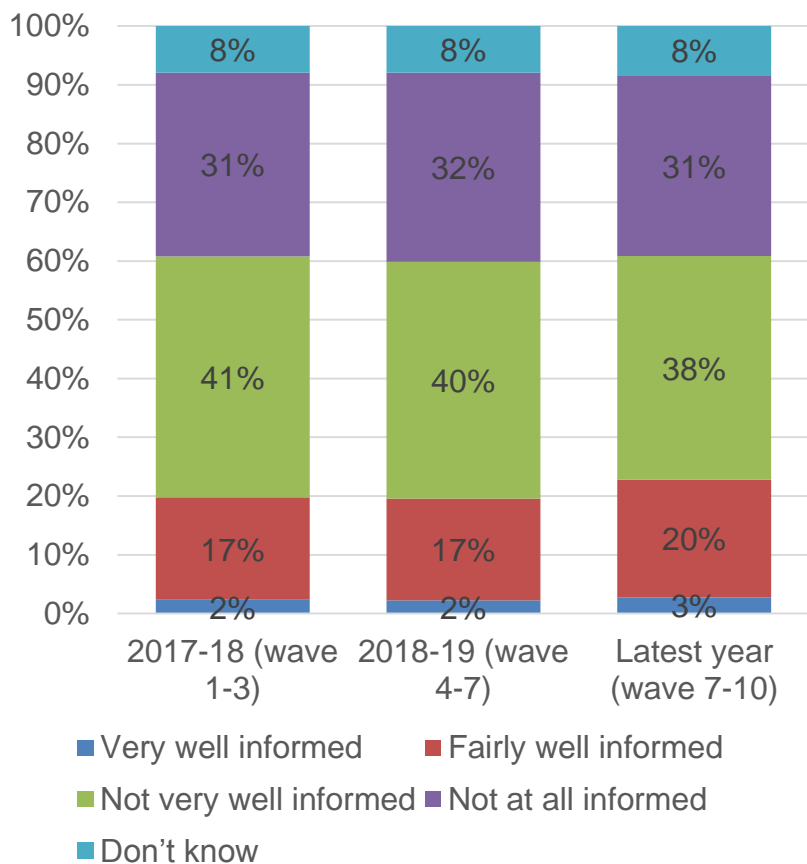
Thinking back to the last occasion that you had contact with Nottinghamshire Police, overall how satisfied or dissatisfied were you with the service you received?



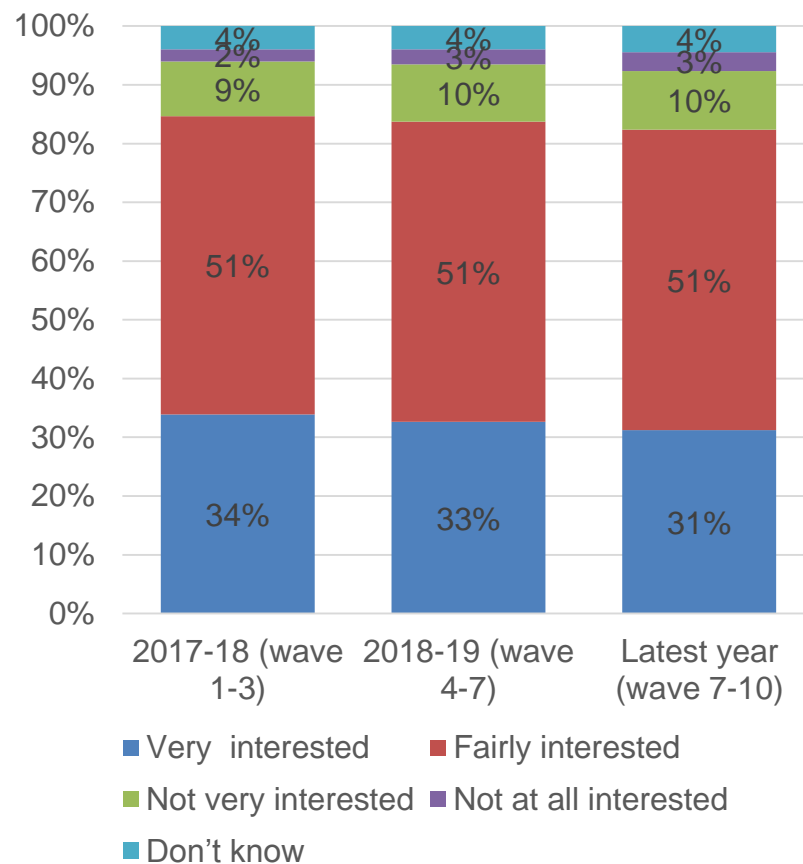
Question added December 2018

In the latest year, 23% of respondents feel well informed about what the police in their local area doing and 82% are interested in what the police are doing in their local area

How well informed do you feel about what the police in your local area are doing?



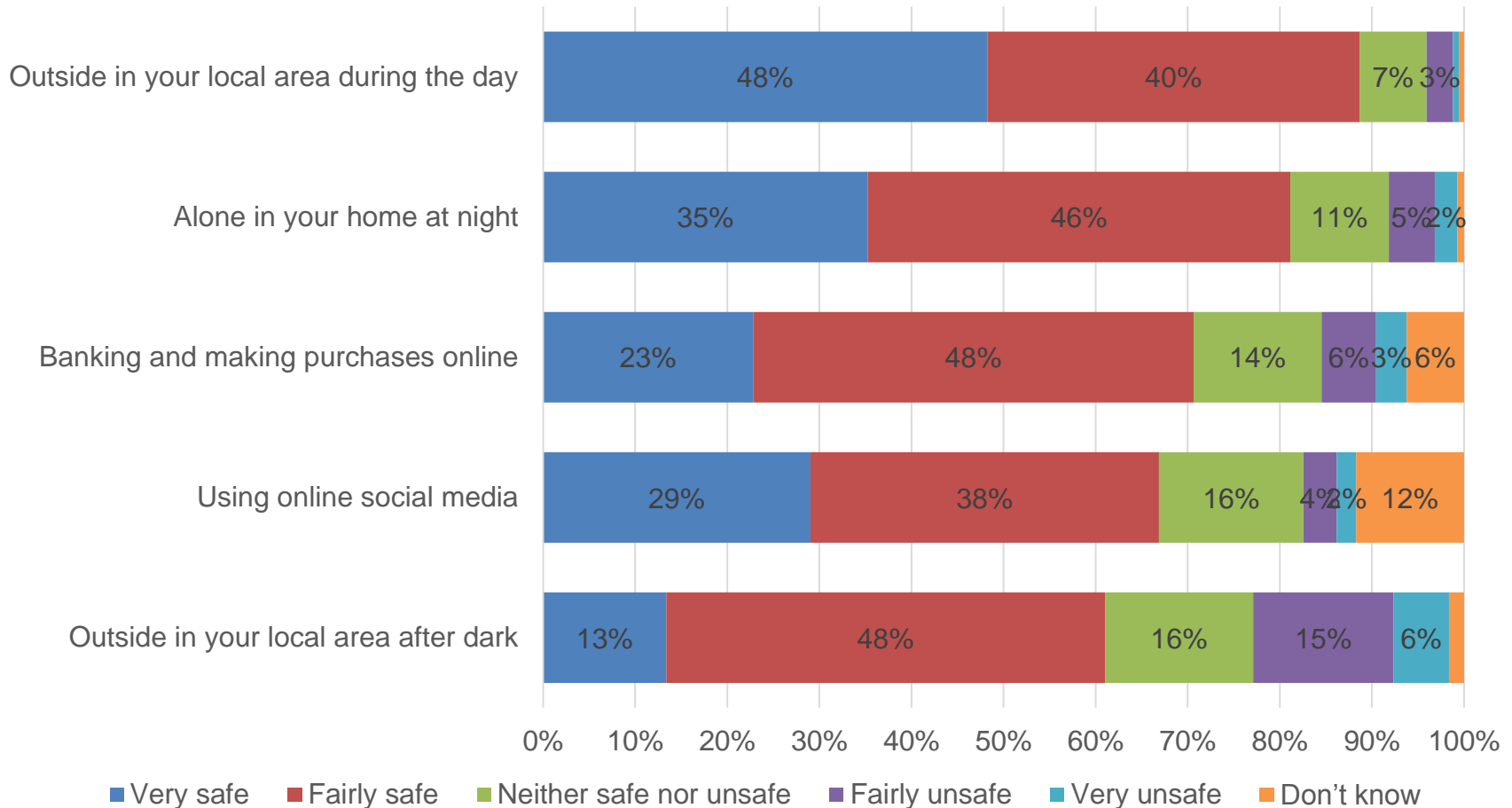
How interested, if at all, are you in knowing what the police are doing in your local area?



Base: Base: 2017-18 = 3,172, 2018-19 - 4,127, Last 12 months = 4,099 Q: How well informed do you feel about what the police in your local area are doing?/ Base: 2017-18 = 3,169, 2018-19 - 4,157, Last 12 months = 4,087 Q: How interested, if at all, are you in knowing what the police are doing in your local area?

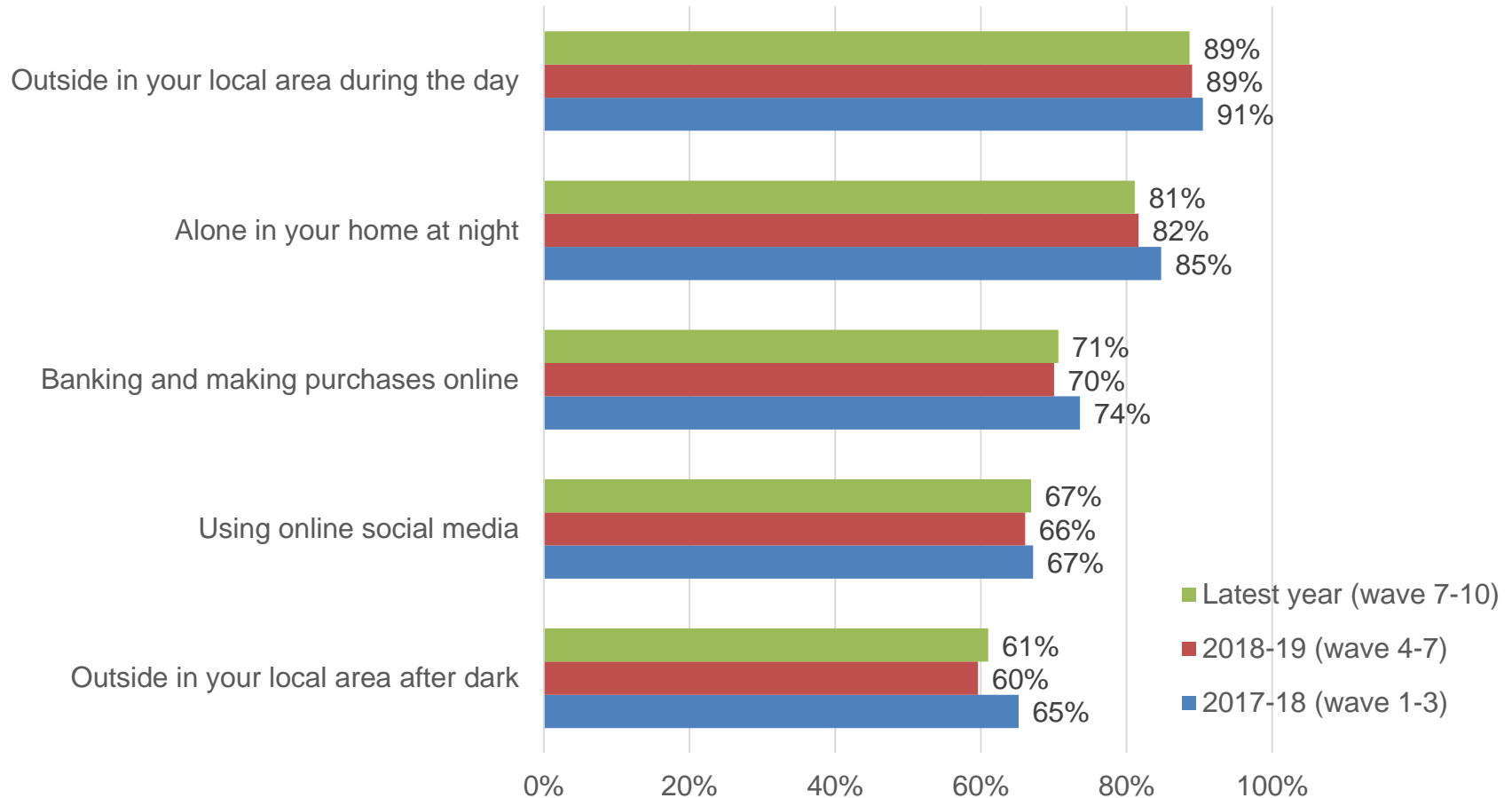
In the latest year, 89% of respondents feel very or fairly safe outside in their local area during the day – this falls to 61% when outside in their local area after dark

Please say how safe or unsafe you generally feel in the following situations: Latest year (wave 7-10)



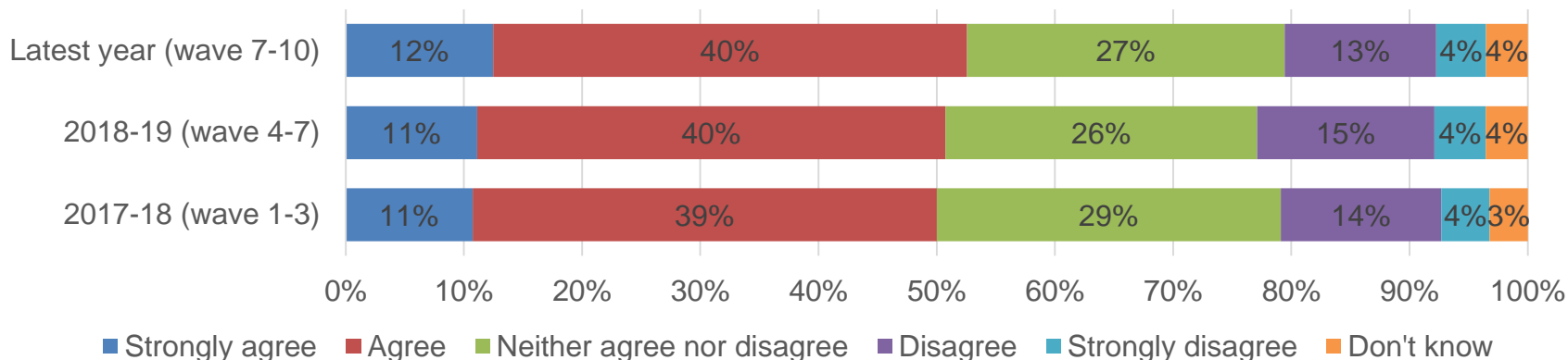
# There are small changes in the perceptions of community safety between the latest year and 2017-18

Please say how safe or unsafe you generally feel in the following situations: Very & fairly safe

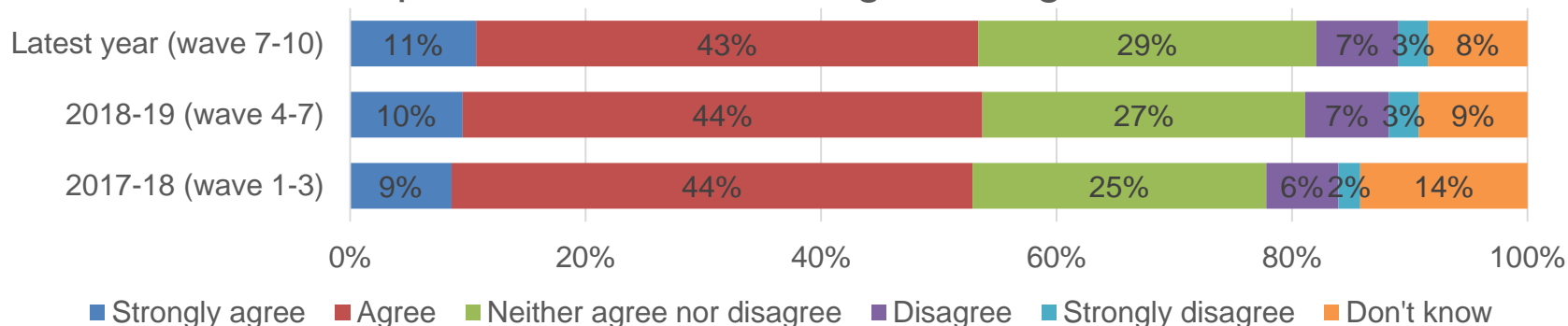


In the latest year, 53% agree that people from different backgrounds get on well and 53% agree that there is a sense of community where they live. The results are similar to 2017-18.

### There is a sense of community



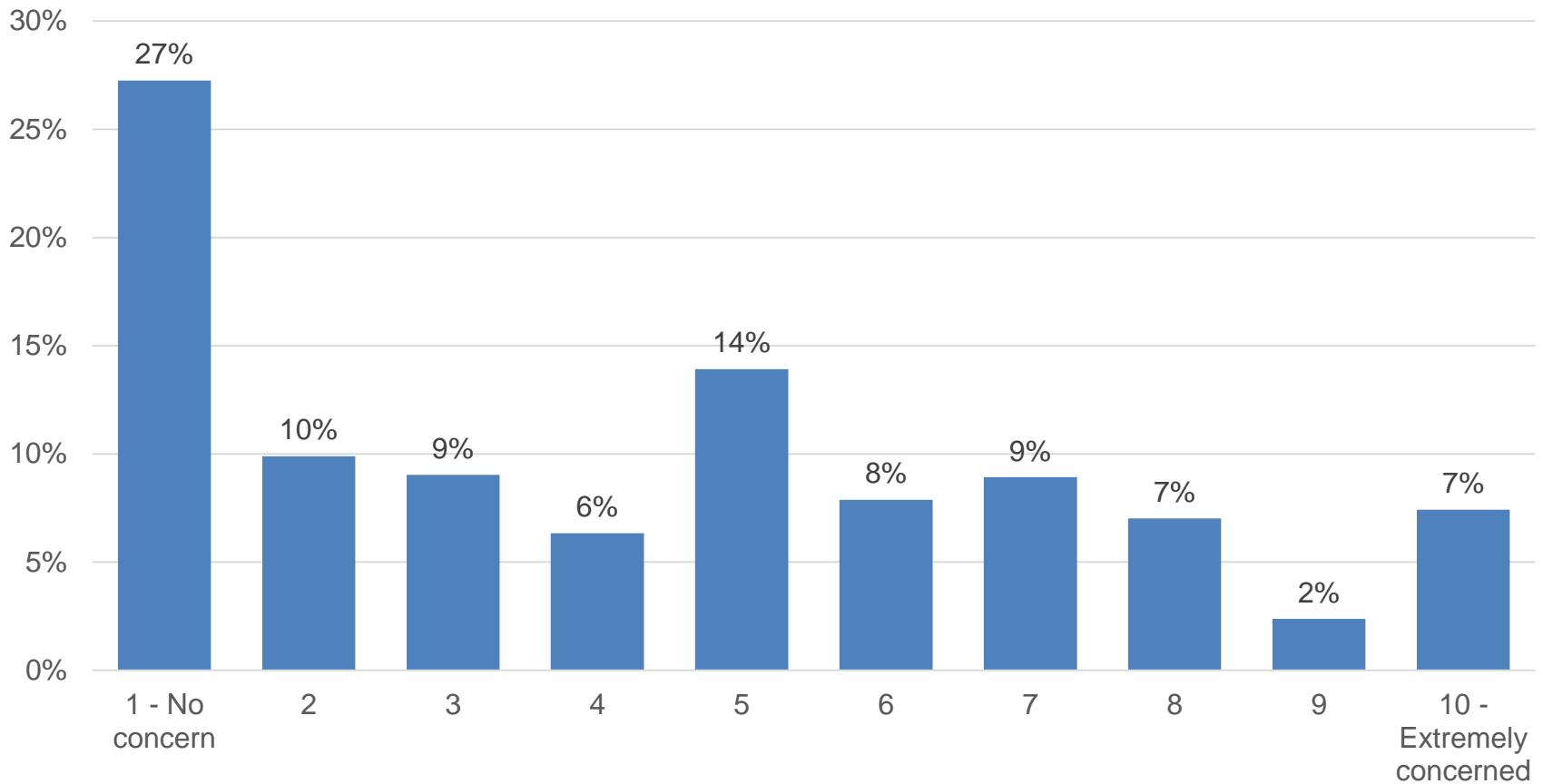
### People from different backgrounds get on well



The statement was 'People from different ethnic backgrounds get on well' in 2017/18 wave 3

27% of respondents have 'no concern' about the safety of police officers in their area . The mean score is 4.3, with 1 being low and 10 being high.

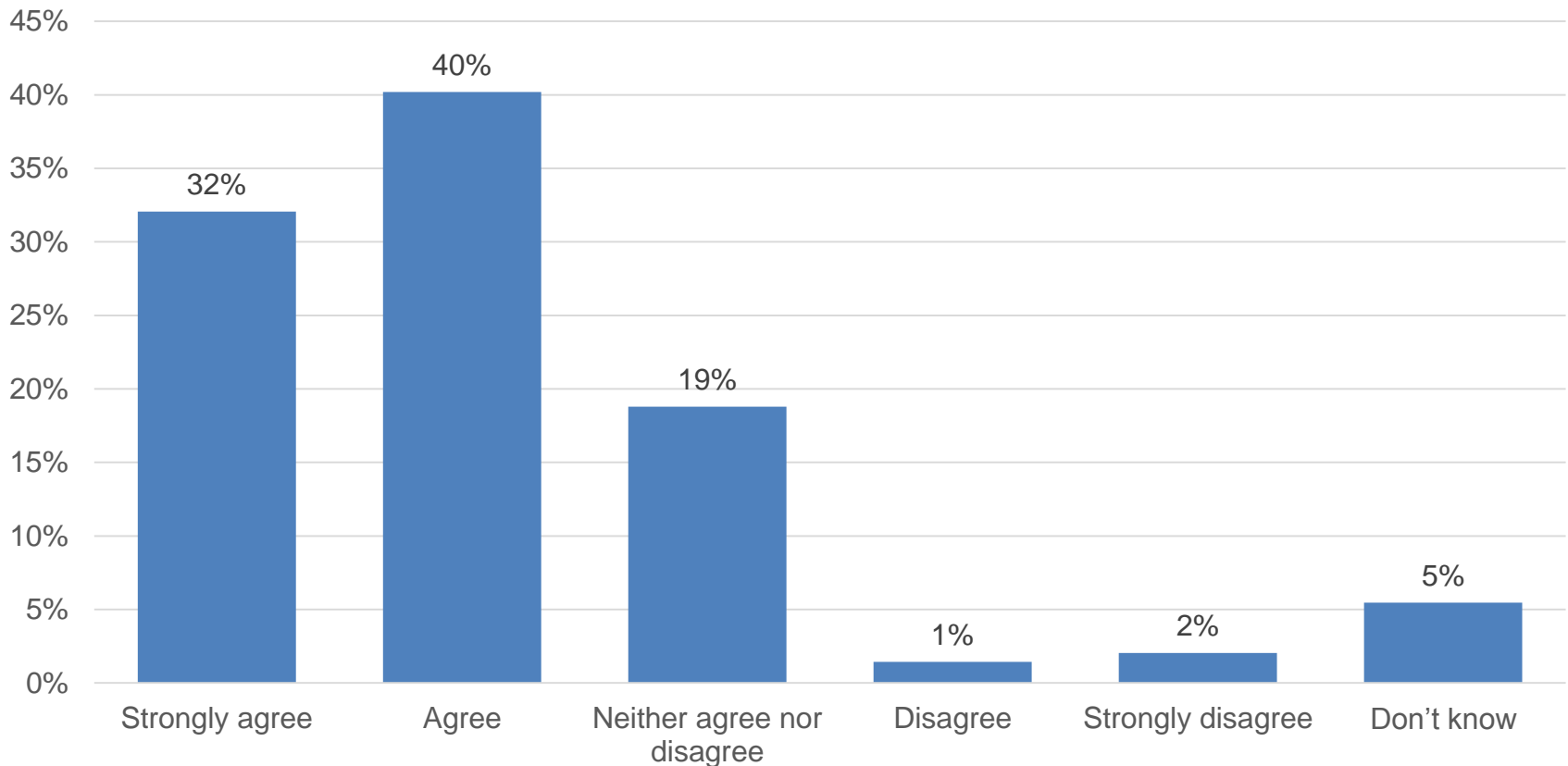
To what extent are you concerned are you about the safety of police officers in your area?



New question added December 2019

# 72% of respondents agree that police officers need to be given more protection and support when carrying out their duties

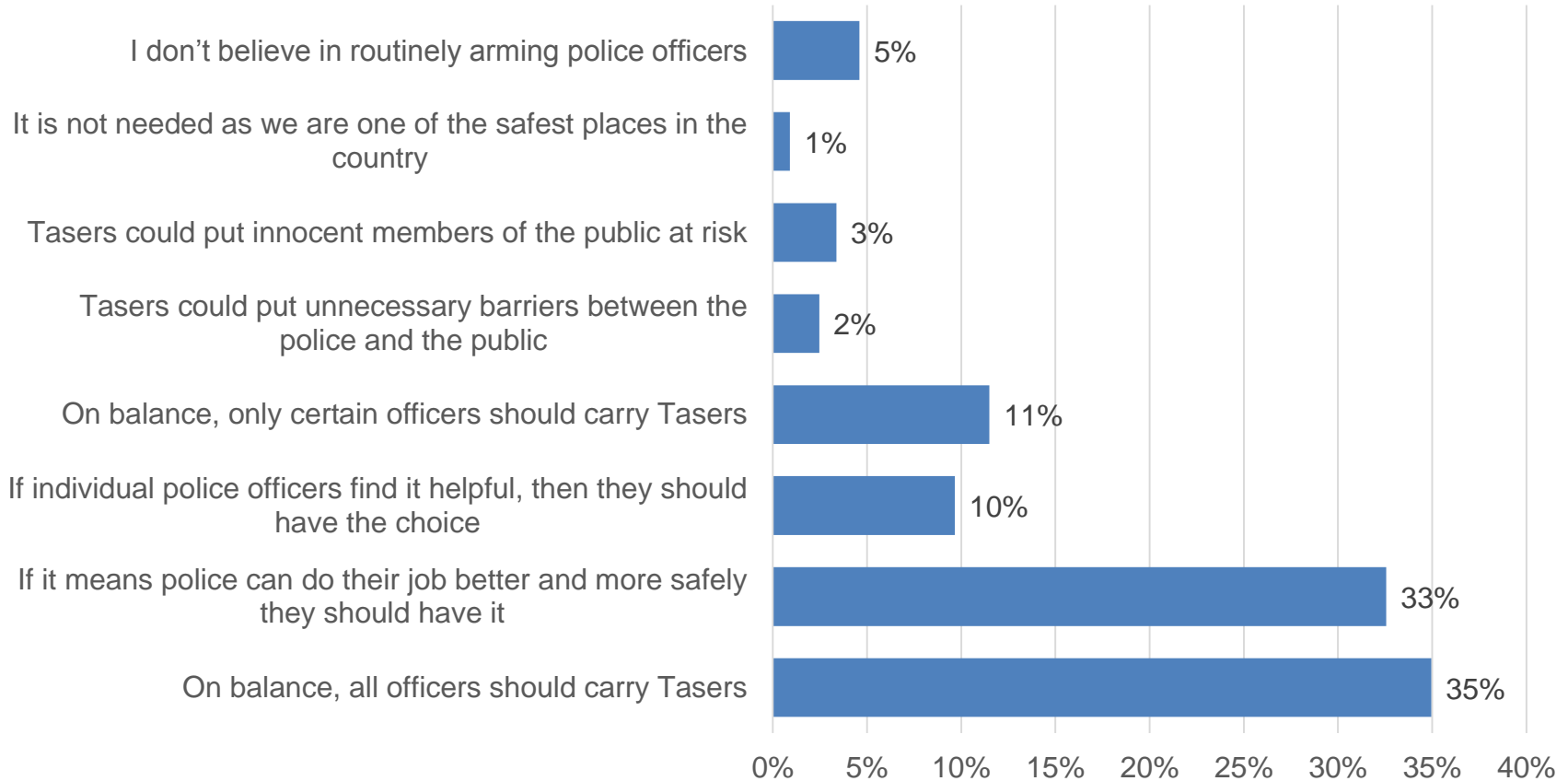
To what extent would you agree or disagree with the following statement: "Police officers need to be given more protection and support when carrying out their duties"



New question added December 2019

# 35% of respondents have the view that all officers should carry Tasers

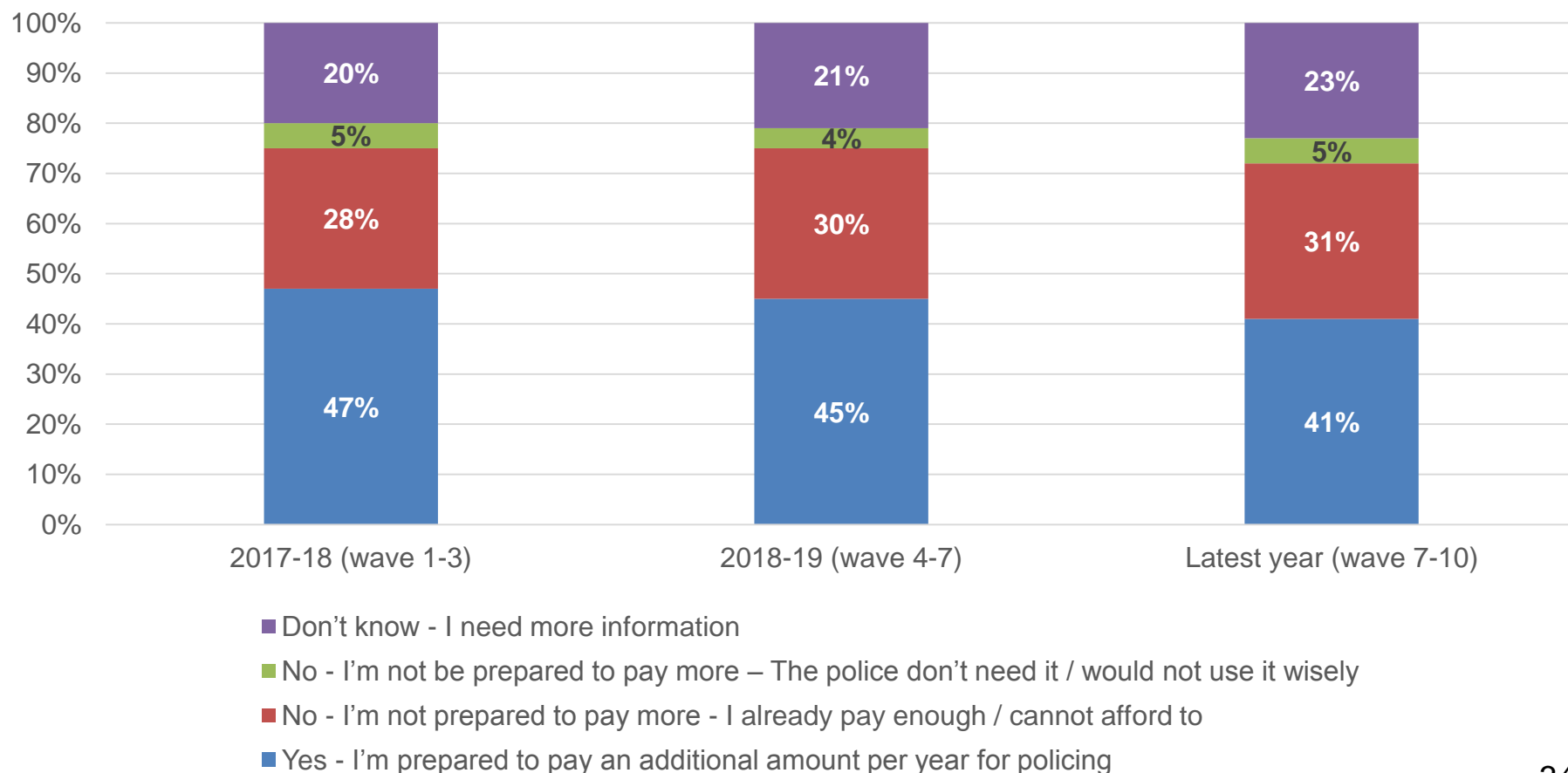
Which option below best sums up your view on local officers being equipped with Tasers?



New question added December 2019

In the latest year, 41% of respondents would be prepared to pay more council tax towards policing, compared to 36% that would not. The proportion prepared to pay more has reduced since 2017-18.

Households in Nottinghamshire pay, on average, £195 a year towards policing as part of their Council Tax (Band D properties). To what extent would you be prepared to pay more?



41% of respondents would be prepared to pay more council tax towards policing, compared to 36% that would not.

Households in Nottinghamshire pay, on average, £195 a year towards policing as part of their Council Tax (Band D properties). To what extent would you be prepared to pay more?

