

# Nottinghamshire PCC Police and Crime Survey – 2020-21 Quarter 4

**July 2021**

# Introduction and Methodology

- This short presentation gives the 'top-line' results from the 4<sup>th</sup> quarter of the 2020-21 Nottinghamshire Police and Crime Survey (wave 15) conducted by Information by Design for Nottinghamshire PCC
- Fieldwork was conducted between 10<sup>th</sup> April and 4<sup>th</sup> July 2021.
- The survey was undertaken using an 'assisted self-completion' method, with a team of fieldwork staff working across selected LSOAs. One in eight LSOAs were selected from each of the following geographic areas:
  - Nottingham
  - South Notts - comprising Gedling, Broxtowe and Rushcliffe
  - BNS – comprising Bassetlaw, Newark and Sherwood
  - Mansfield and Ashfield
- The achieved sample was 1,086 respondents in wave 15 broken down as follows:

Area	Local Authority	2017-18* (wave 1-3) Unweighted Count	2018-19 (wave 4-7) Unweighted Count	2019-20 (wave 8-11) Unweighted Count	2020-21 Q1 (wave 12) Unweighted Count	2020-21 Q2 (wave 13) Unweighted Count	2020-21 Q3 (wave 14) Unweighted Count	2020-21 Q4 (wave 15) Unweighted Count	Latest year (wave 11-14) Unweighted Count
Bassetlaw, Newark and Sherwood	Bassetlaw	404	533	542	144	136	130	138	548
	Newark and Sherwood	417	548	535	126	132	136	134	528
	<b>Total</b>	<b>821</b>	<b>1,081</b>	<b>1,077</b>	<b>270</b>	<b>268</b>	<b>266</b>	<b>272</b>	<b>1076</b>
Mansfield and Ashfield	Ashfield	473	568	529	135	123	126	148	532
	Mansfield	340	563	547	135	145	140	124	544
	<b>Total</b>	<b>813</b>	<b>1,131</b>	<b>1,076</b>	<b>270</b>	<b>268</b>	<b>266</b>	<b>272</b>	<b>1076</b>
Nottingham	<b>Nottingham</b>	<b>813</b>	<b>1,066</b>	<b>1,075</b>	<b>270</b>	<b>268</b>	<b>265</b>	<b>269</b>	<b>1072</b>
South Nottinghamshire	Broxtowe	261	358	364	80	88	94	84	346
	Gedling	273	411	382	90	101	92	98	381
	Rushcliffe	301	336	331	100	79	84	91	354
	<b>Total</b>	<b>835</b>	<b>1,105</b>	<b>1,077</b>	<b>270</b>	<b>268</b>	<b>270</b>	<b>273</b>	<b>1,081</b>

\* Data is shown in financial years. 2017-18 is the partial year comprising waves 1-3

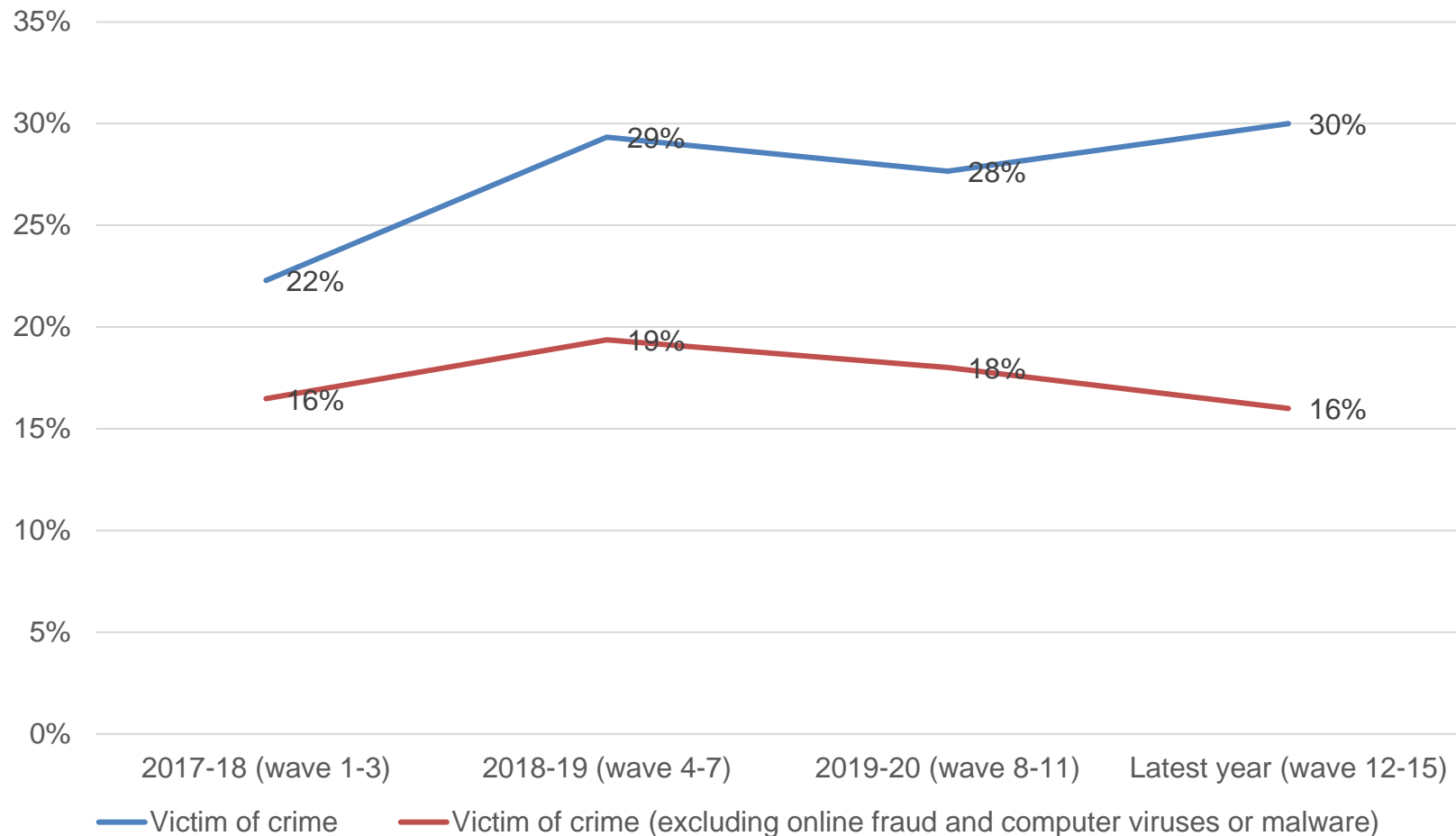
# Fieldwork Periods

Wave	Start Date	End Date	Financial year
1	23 <sup>th</sup> August 2017	29 <sup>th</sup> September 2017	2017-18 *
2	12 <sup>th</sup> November 2017	2 <sup>nd</sup> January 2018	2017-18 *
3	10 <sup>th</sup> March 2018	31 <sup>st</sup> March 2018	2017-18 *
4	26 <sup>th</sup> May 2018	17 <sup>th</sup> June 2018	2018-19
5	25 <sup>th</sup> August 2018	30 <sup>th</sup> September 2018	2018-19
6	31 <sup>st</sup> October 2018	6 <sup>th</sup> January 2019	2018-19
7	2 <sup>nd</sup> February 2019	17 <sup>th</sup> February 2019	2018-19
8	14 <sup>th</sup> April 2019	2 <sup>nd</sup> June 2019	2019-20
9	18 <sup>th</sup> August 2019	21 <sup>st</sup> September 2019	2019-20
10	26 <sup>th</sup> November 2019	21 <sup>st</sup> December 2019	2019-20
11	22 <sup>nd</sup> February 2020	11 <sup>th</sup> March 2020	2019-20
12	16 <sup>th</sup> August 2020	24 <sup>th</sup> October 2020	2020-21**
13	16 <sup>th</sup> August 2020	24 <sup>th</sup> October 2020	2020-21**
14	22 <sup>nd</sup> November 2020	20 <sup>th</sup> December 2020	2020-21
15	10 <sup>th</sup> April 2021	4 <sup>th</sup> July 2021	2020-21

- 2017-18 is the partial year comprising waves 1-3
- \*\* wave 12 and 13 fieldwork was conducted concurrently due to wave 12 being delayed because of the first COVID-19 lockdown

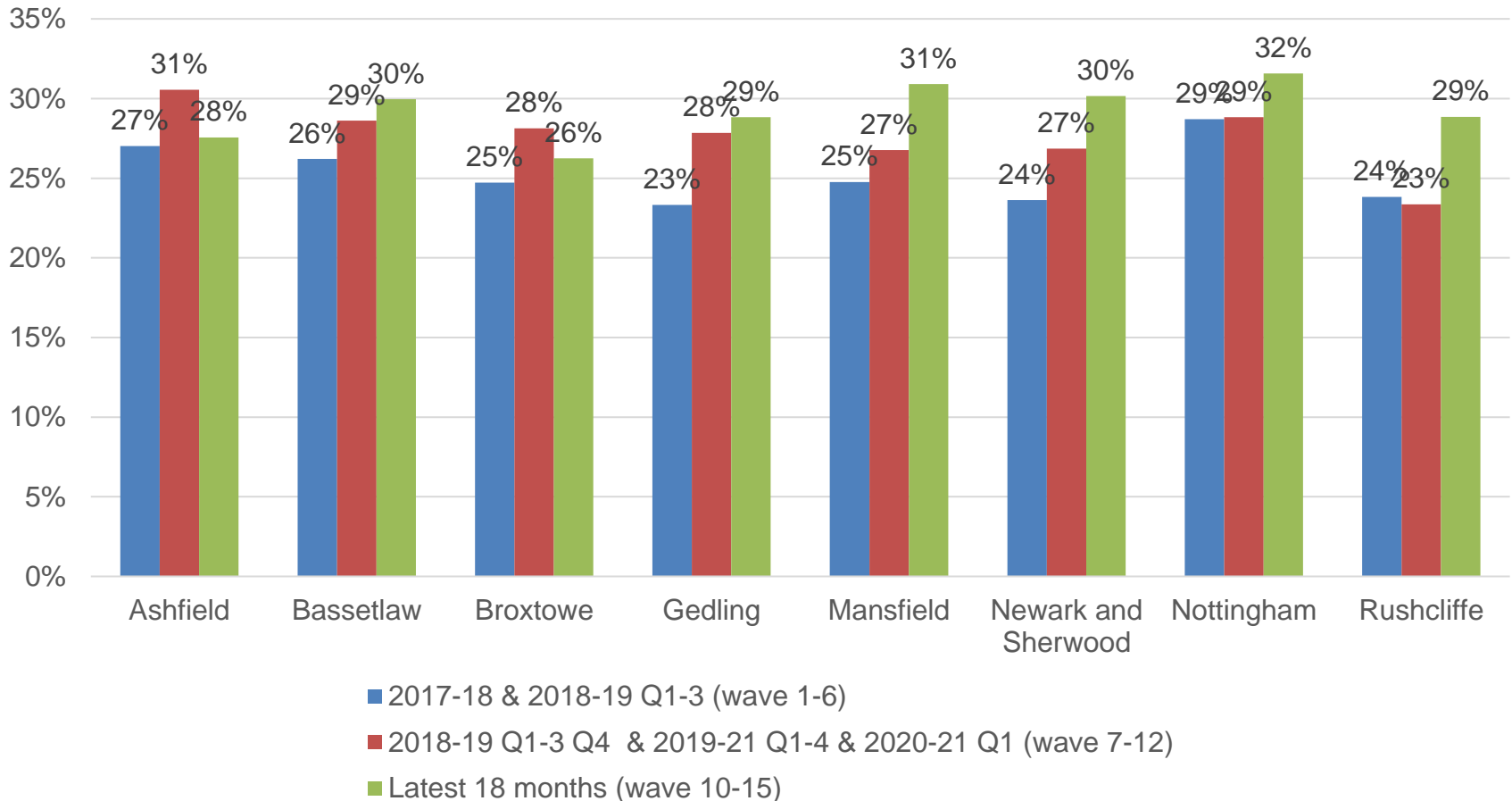
In the latest year, 30% of respondents had been victim of a crime in the last 12 months. This reduces to 16% when online fraud and computer misuse are excluded.

In the last 12 months, have you personally been a victim of crime?



In the latest period, respondents from Nottingham were most likely to have been a victim of crime; the increase between the first 18 months and the latest 18 months is highest for Newark & Sherwood

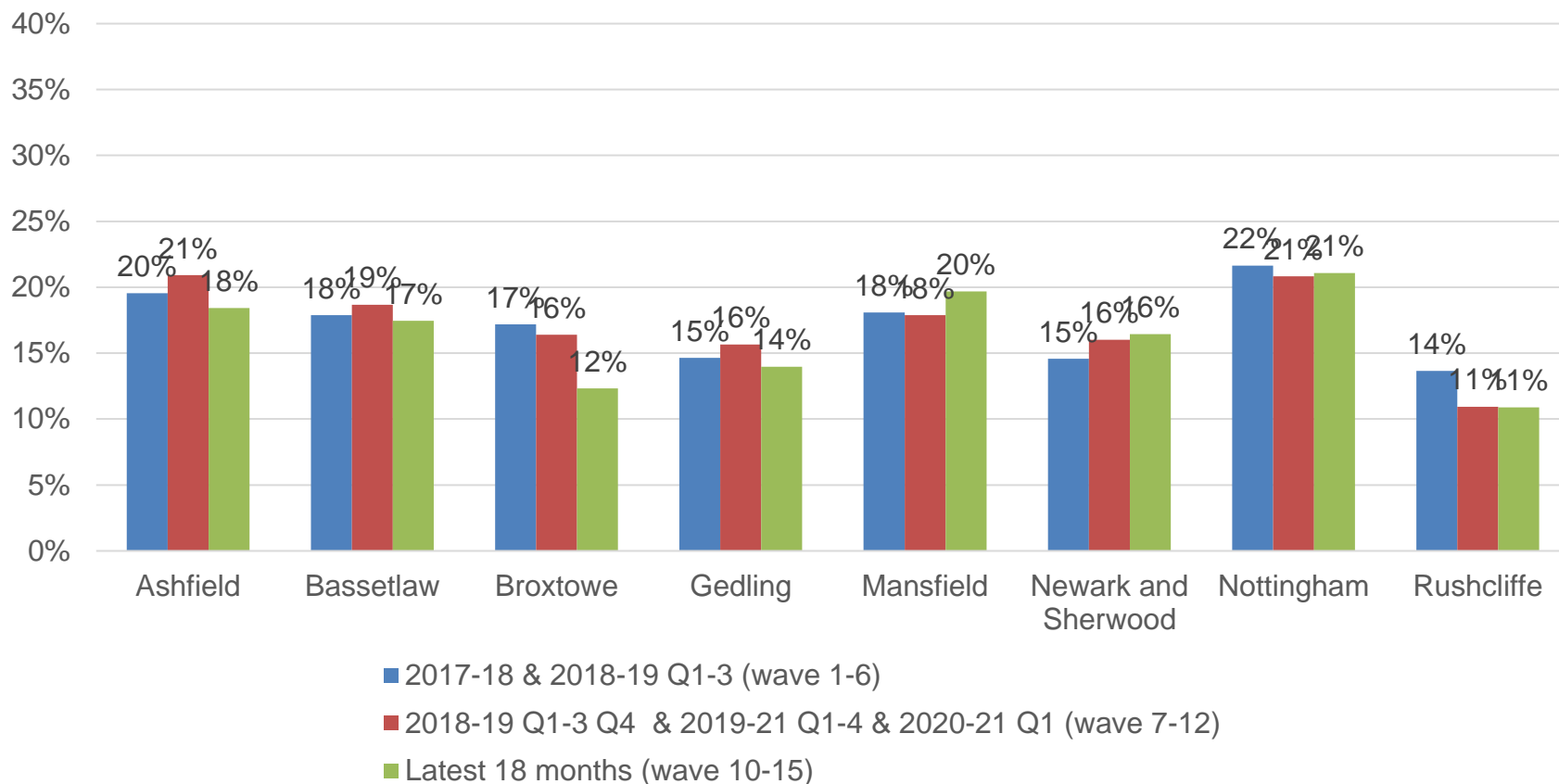
In the last 12 months, have you personally been a victim of crime?



Base: Last 18 months Ashfield = 681, Bassetlaw = 648, Broxtowe = 643, Gedling = 646, Mansfield = 589, Newark & Sherwood = 665, Nottingham = 1,792, Rushcliffe = 644 Q: In the last 12 months, have you personally been a victim of any of the following crime types?

When online fraud and computer misuse are excluded, in the latest year, respondents from Nottingham were most likely to have been a victim of crime, the increase between first 18 months and the latest 18 months is highest for Mansfield and Newark & Sherwood.

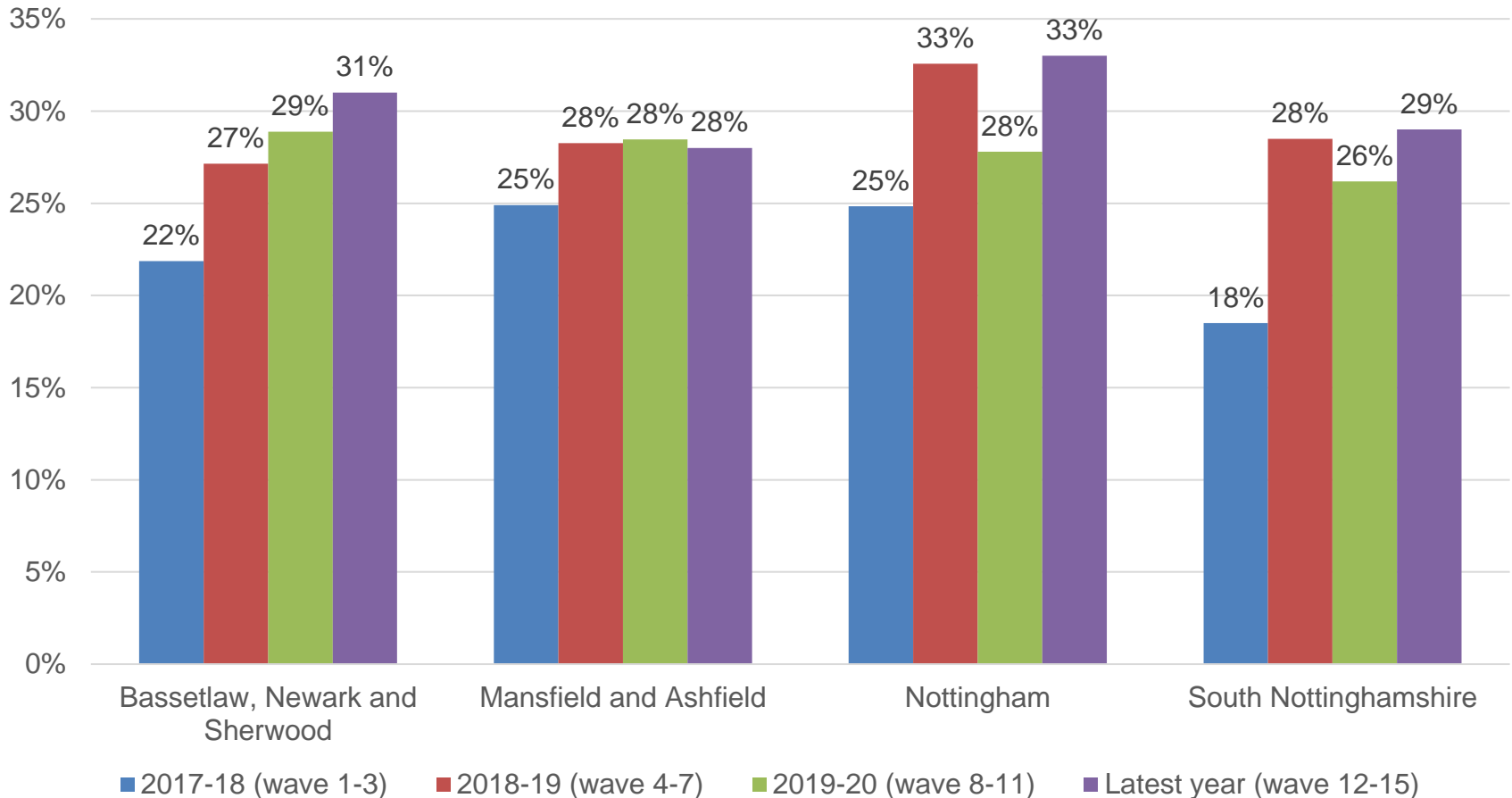
In the last 12 months, have you personally been a victim of crime? (excluding online fraud and computer viruses or malware)



Base: Last 18 months Ashfield = 681, Bassetlaw = 648, Broxtowe = 643, Gedling = 646, Mansfield = 589, Newark & Sherwood = 665, Nottingham = 1,792, Rushcliffe = 644 Q: In the last 12 months, have you personally been a victim of any of the following crime types?

In the latest period, respondents from Nottingham were most likely to have been a victim of crime; the increase between 2017-18 and the latest 12 months is highest for South Nottinghamshire

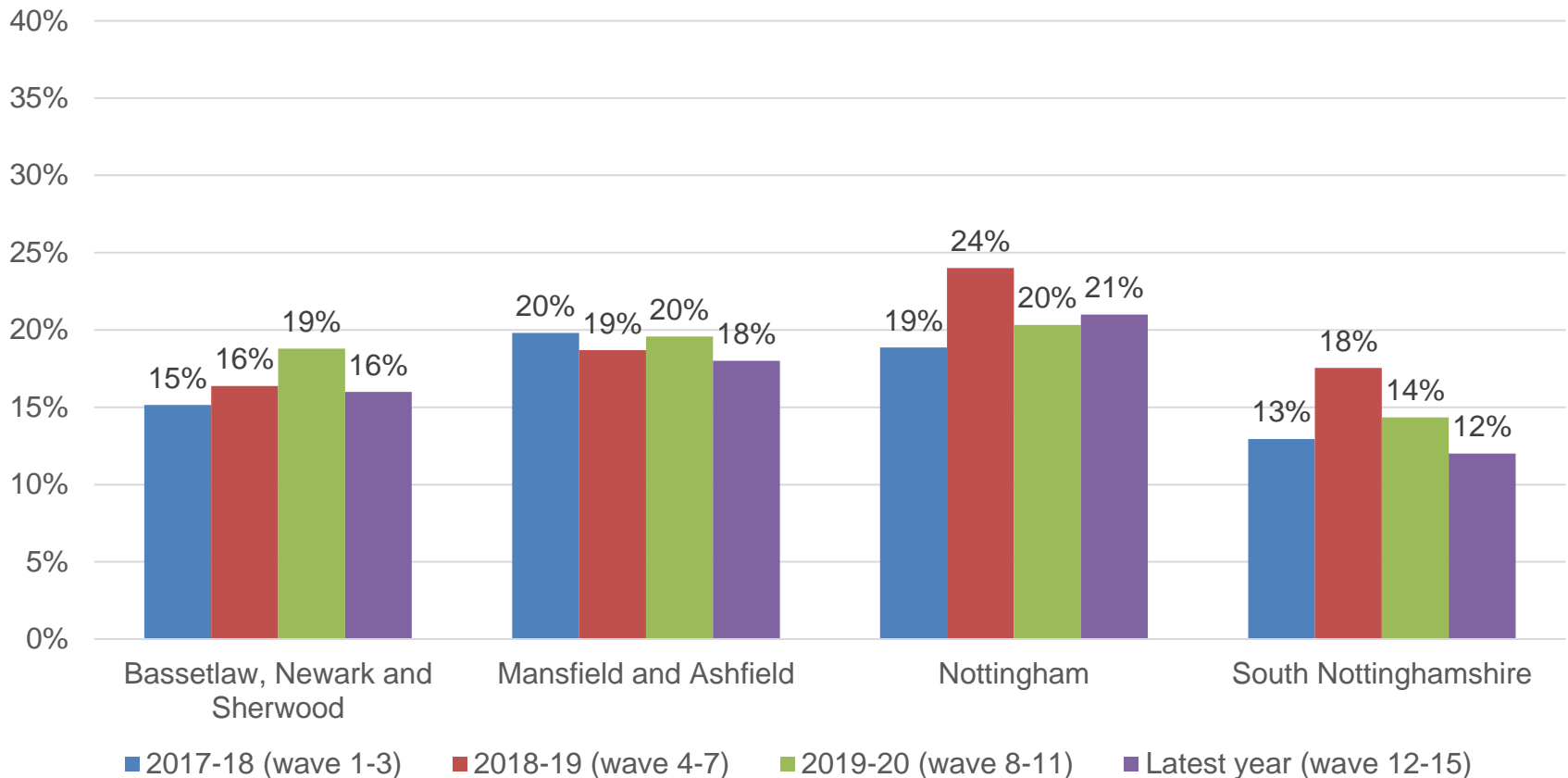
In the last 12 months, have you personally been a victim of crime?



Base Last 12 Months: Bassetlaw, Newark & Sherwood = 874, Mansfield and Ashfield = 841, Nottingham = 1,186, South Nottinghamshire = 1,282 Q In the last 12 months, have you personally been a victim of any of the following crime types?

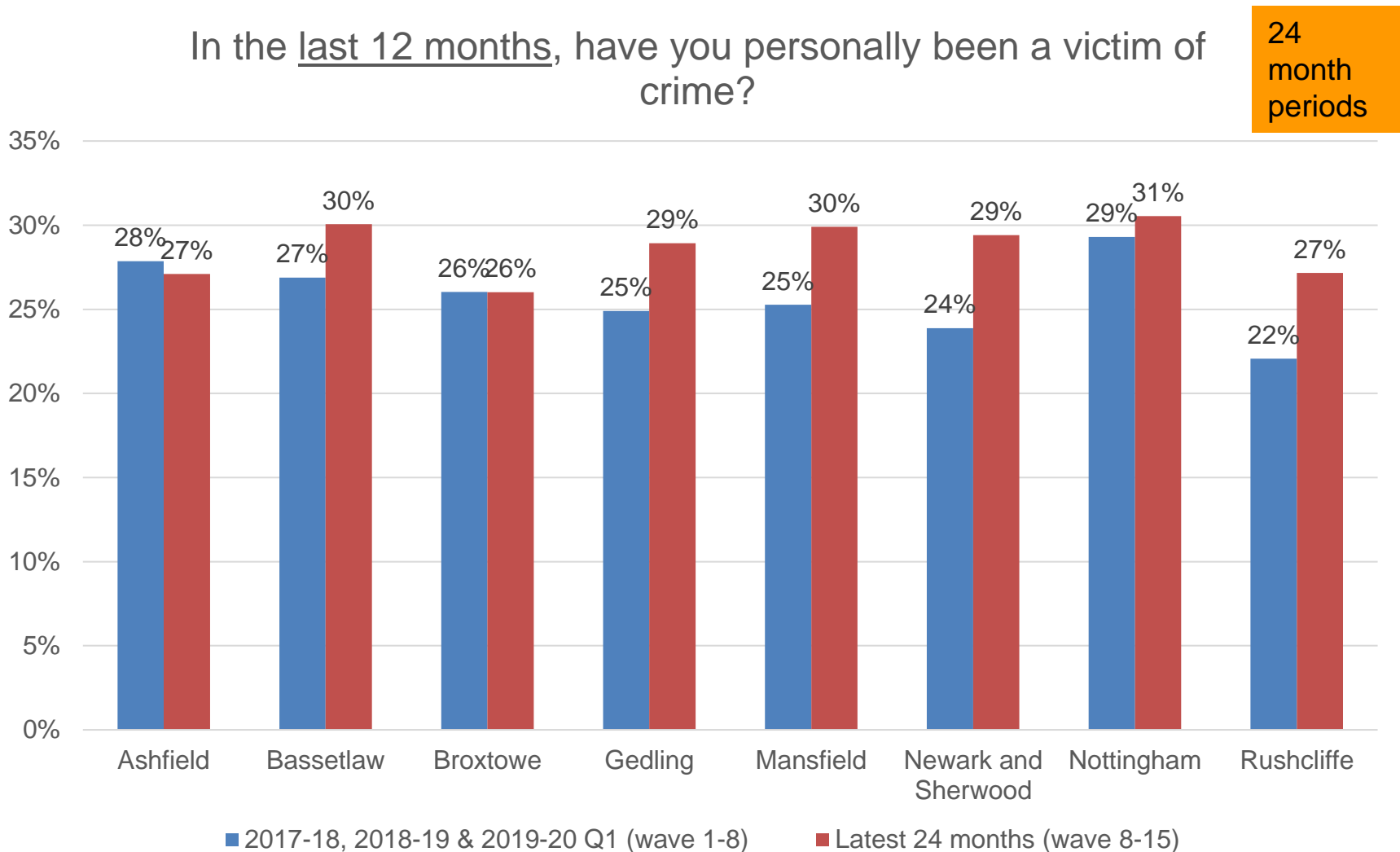
When online fraud and computer misuse are excluded, in the latest year, respondents from Nottingham were most likely to have been a victim of crime, the increase between 2017-18 and the latest year is highest for Nottingham.

In the last 12 months, have you personally been a victim of crime? (excluding online fraud and computer viruses or malware)





# Respondents from Nottingham were most likely to have been a victim of crime; the increase between the first 24 months and the latest 24 months is highest for Newark and Sherwood

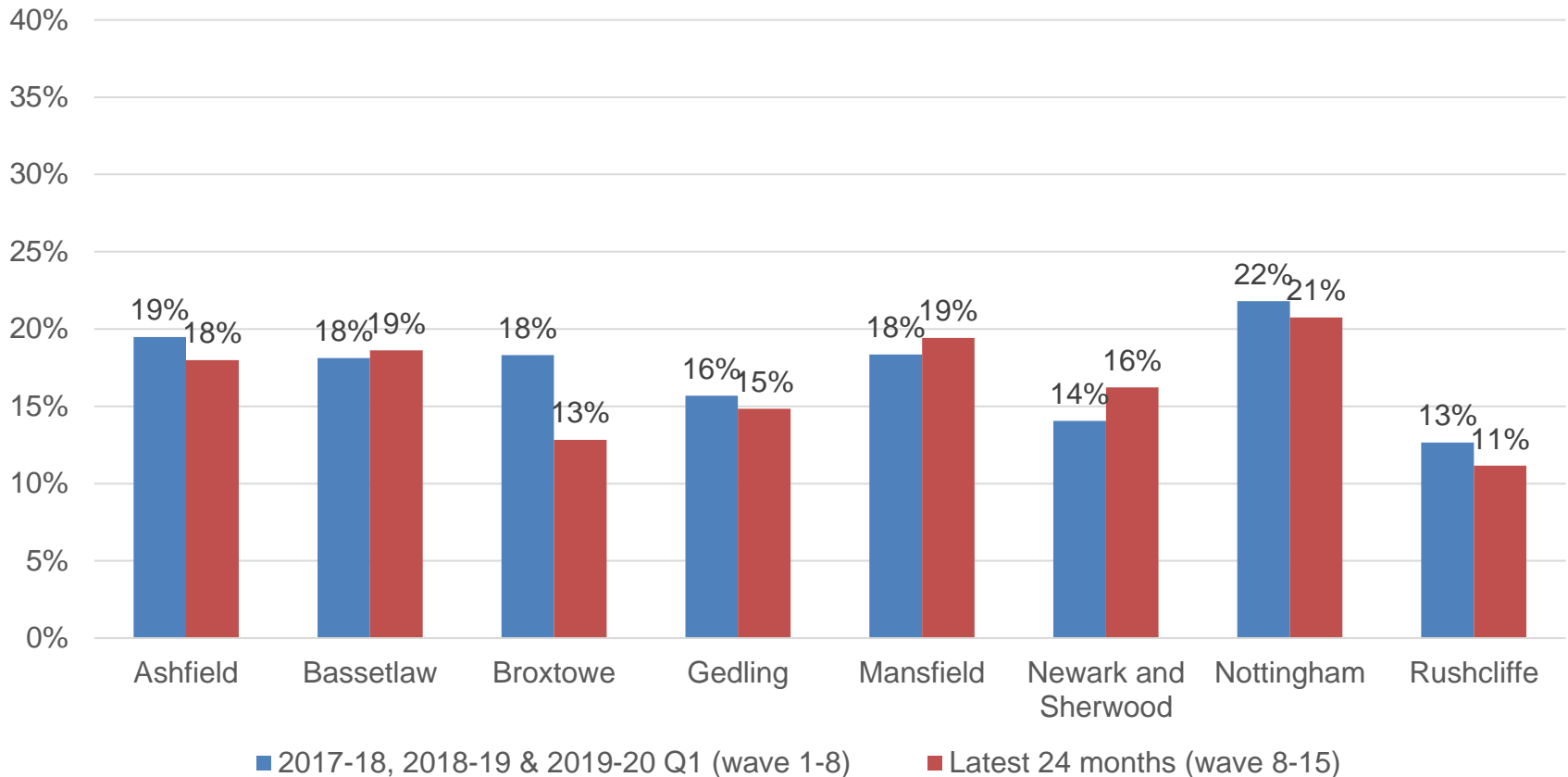


Base Last 24 months: Ashfield = 908, Bassetlaw = 864, Broxtowe = 856, Gedling = 862, Mansfield = 779, Newark & Sherwood = 885, Nottingham = 2,385, Rushcliffe = 856 Q: In the last 12 months, have you personally been a victim of any of the following crime types?

When online fraud and computer misuse are excluded, in the latest year, respondents from Nottingham were most likely to have been a victim of crime, the increase between the first 24 months and the latest 24 months is highest for Newark & Sherwood

In the last 12 months, have you personally been a victim of crime? (excluding online fraud and computer viruses or malware)

24  
month  
periods

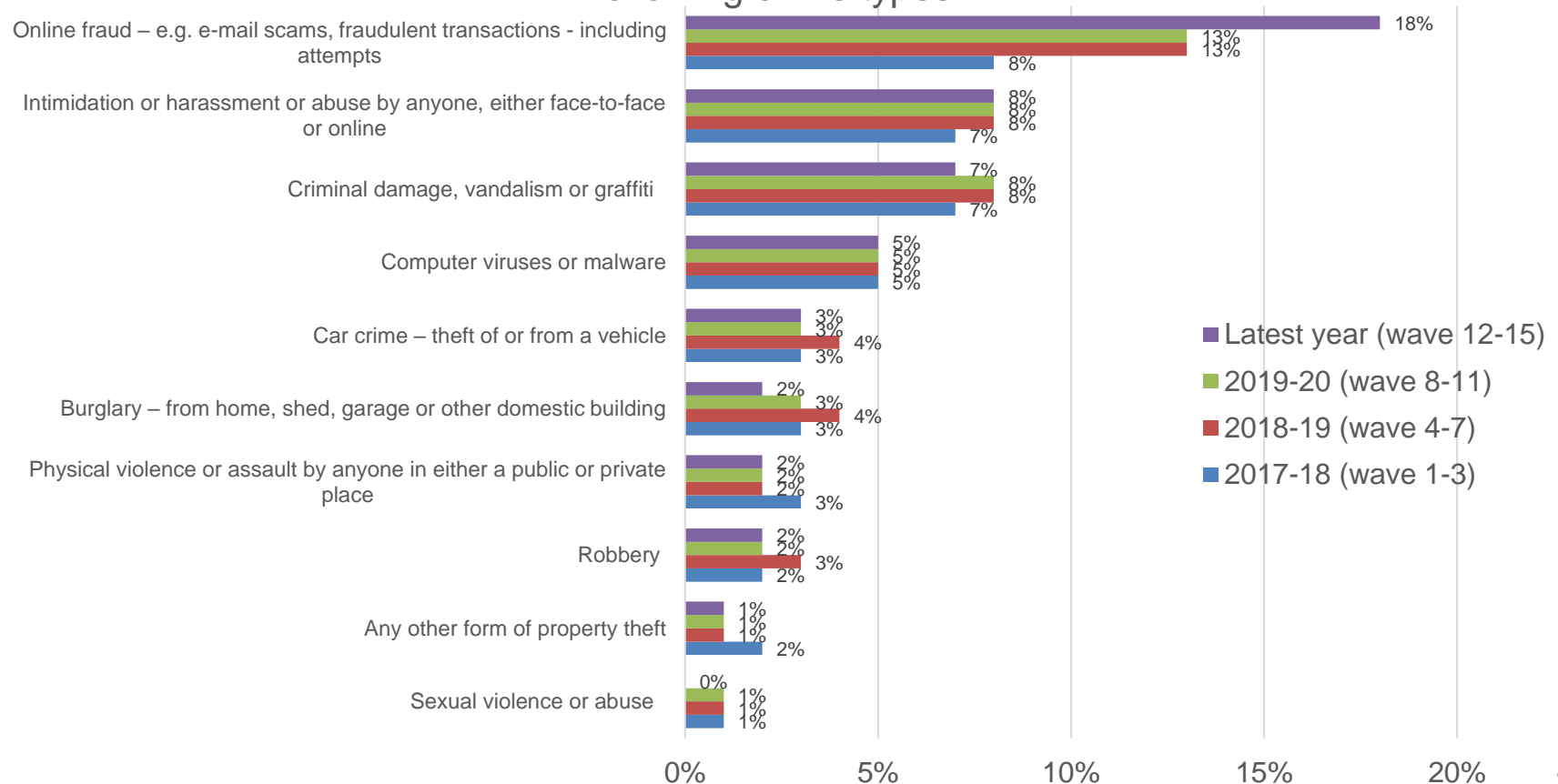


Base Last 24 months: Ashfield = 908, Bassetlaw = 864, Broxtowe = 856, Gedling = 862, Mansfield = 779, Newark & Sherwood = 885, Nottingham = 2,385, Rushcliffe = 856 Q: In the last 12 months, have you personally been a victim of any of the following crime types?

# In the latest year, 30% of respondents had been victim of a crime; online fraud remains the most commonly experienced crime and has increased in the latest period

- 2% of respondents had experienced hate related crime and 1% had experienced domestic violence/abuse related crime in the last 12 months

In the last 12 months, have you personally been a victim of any of the following crime types?



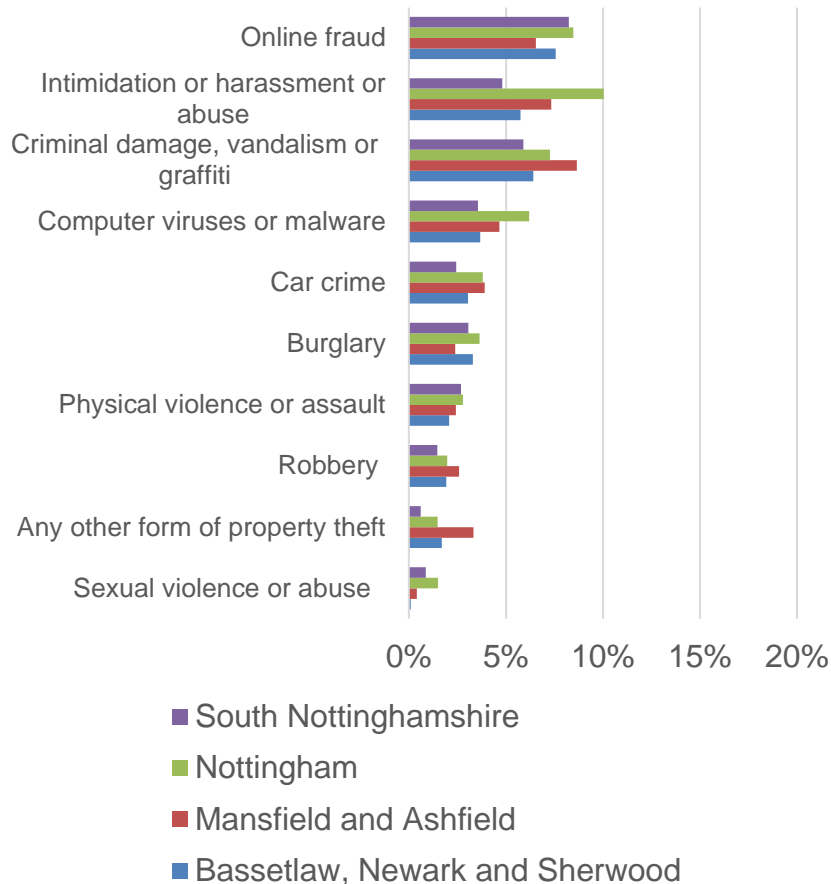
Base: 2017-18 = 3,152, 2018 - 19 = 4,251, 2019 - 20 = 4,212, Last 12 months (wave 12-15) = 4,183

Q: In the last 12 months, have you personally been a victim of any of the following crime types?

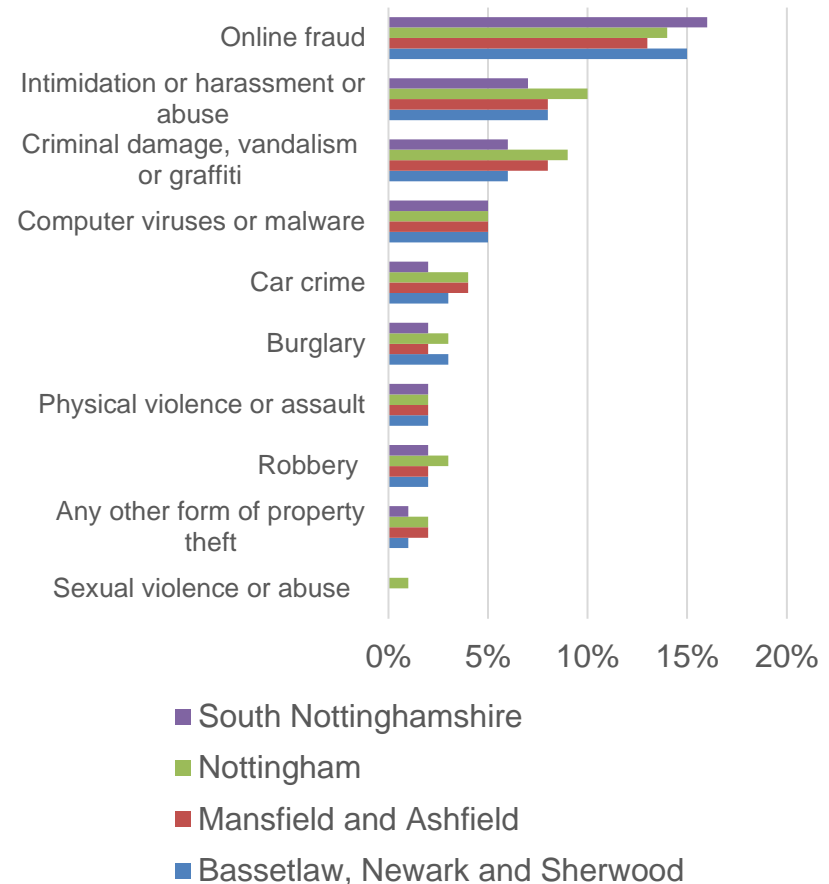
# In the latest year, 31% from Bassetlaw, Newark and Sherwood, 28% from Mansfield and Ashfield, 33% from Nottingham and 29% of respondents from South Nottinghamshire, had been victim of a crime

2017-18 and latest year

In the last 12 months, have you personally been a victim of any of the following crime types? – 2017-18 (wave 1-3)



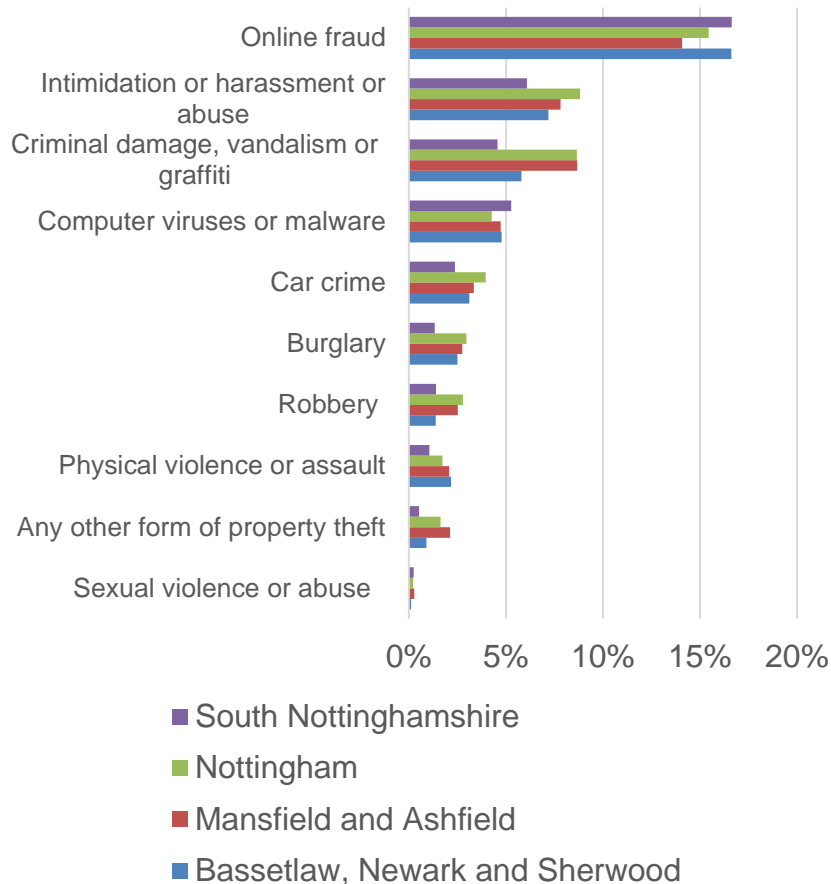
In the last 12 months, have you personally been a victim of any of the following crime types? – Latest year (wave 12-15)



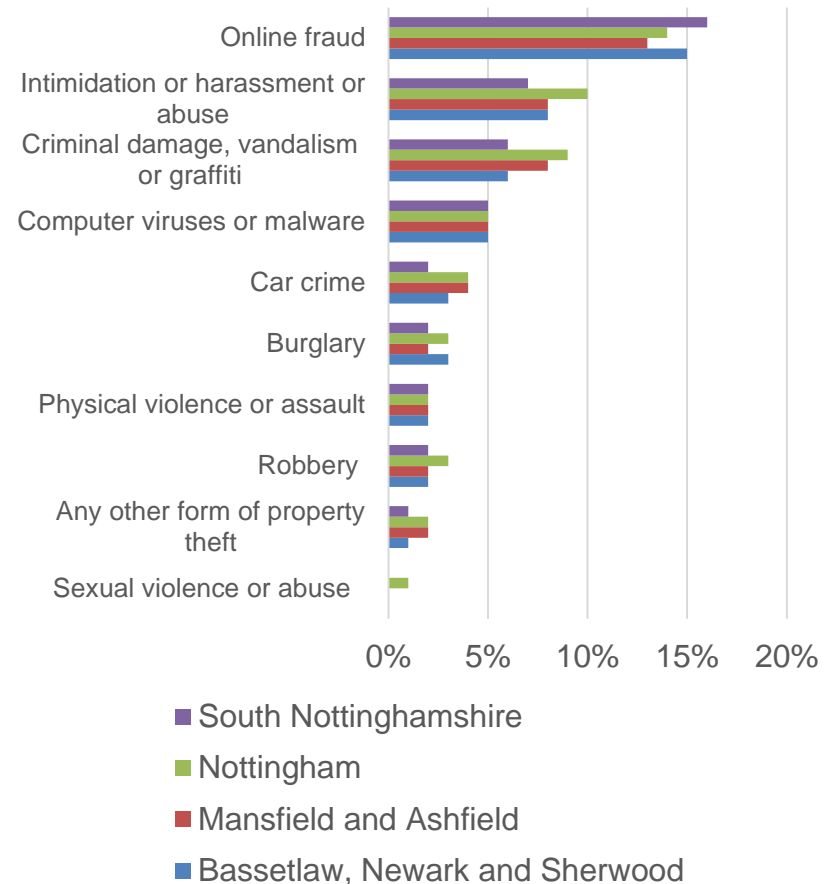
# In the latest year, 31% from Bassetlaw, Newark and Sherwood, 28% from Mansfield and Ashfield, 28% from Mansfield and Ashfield, 33% from Nottingham and 29% of respondents from South Nottinghamshire, had been victim of a crime

2018-19 and latest year

In the last 12 months, have you personally been a victim of any of the following crime types? – 2018-19 (wave 4-7)



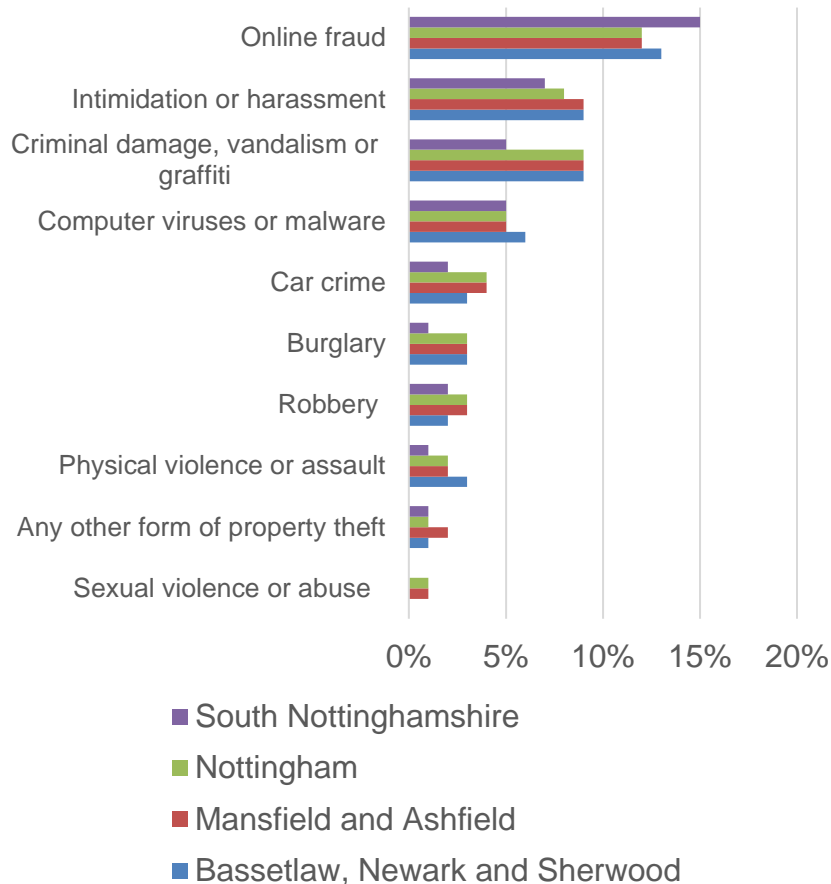
In the last 12 months, have you personally been a victim of any of the following crime types? – Latest year (wave 12-15)



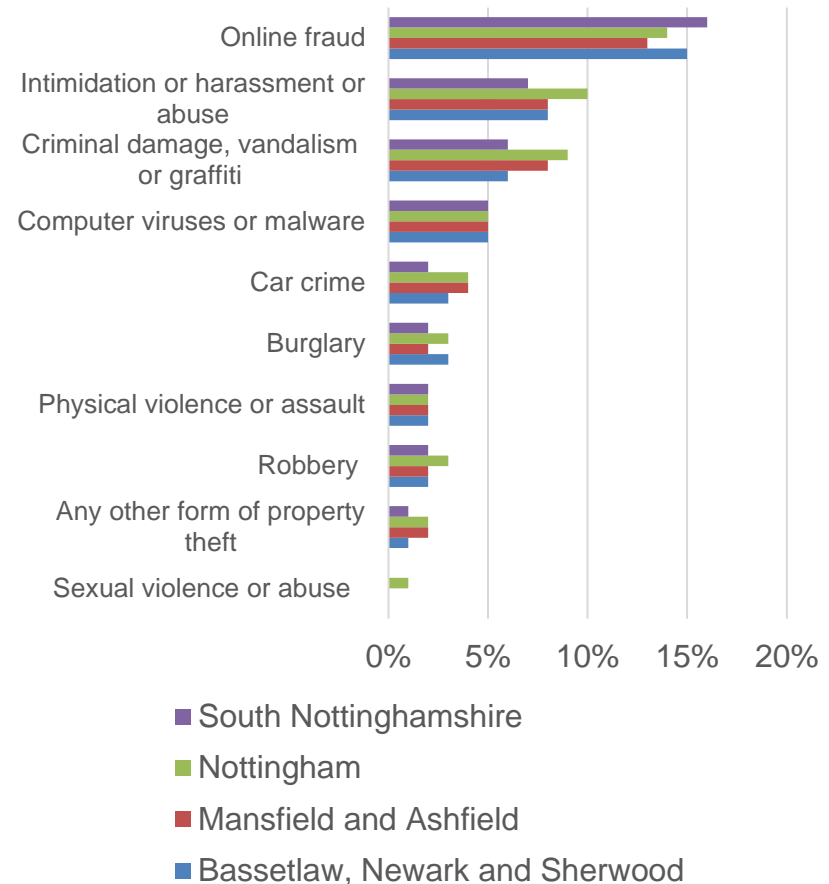
# In the latest year, 31% from Bassetlaw, Newark and Sherwood, 28% from Mansfield and Ashfield, 33% from Nottingham and 29% of respondents from South Nottinghamshire, had been victim of a crime

2019-20 and latest year

In the last 12 months, have you personally been a victim of any of the following crime types? – 2018-19 (wave 8-11)

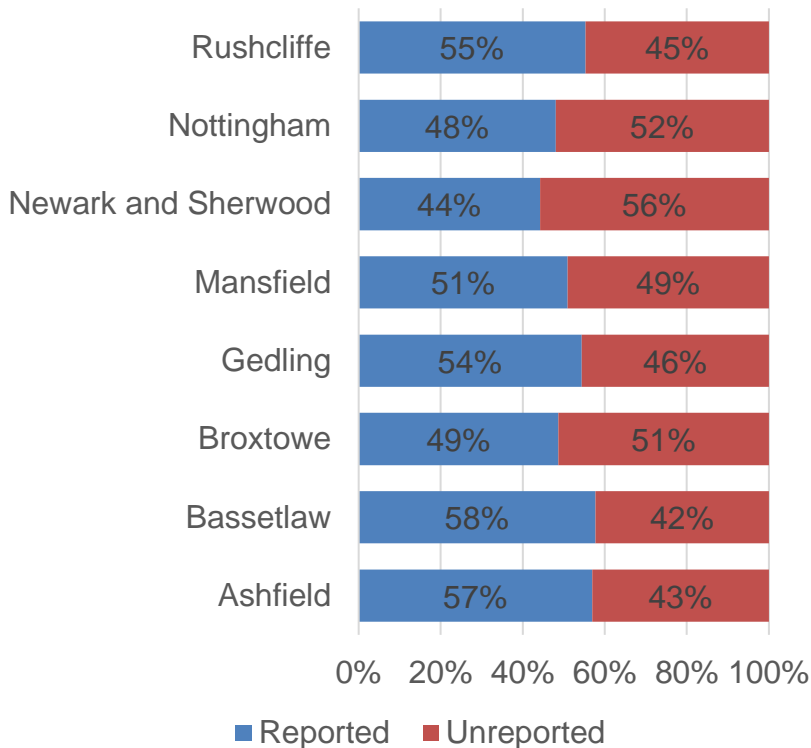


In the last 12 months, have you personally been a victim of any of the following crime types? – Latest year (wave 12-15)

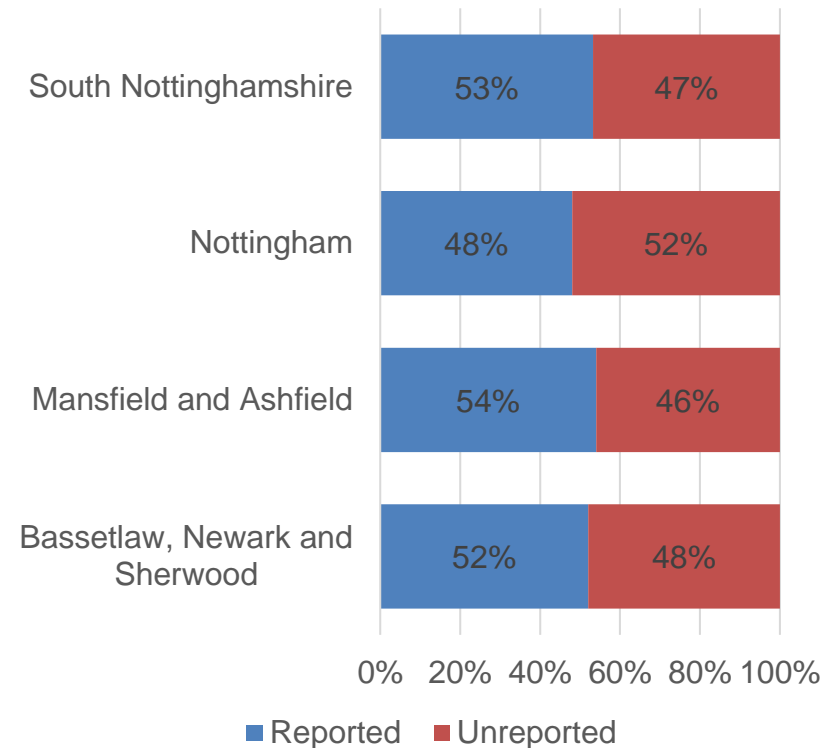


In the latest 2 years, the proportion of crimes (excluding online and computer viruses or malware) that had been reported was 48% in Nottingham, 52% Bassetlaw, Newark and Sherwood, 53% in South Nottinghamshire and 54% in Mansfield and Ashfield.

Proportion of reported and unreported crimes (excluding online fraud and computer viruses or malware)  
– Latest 2 years (wave 8-15)

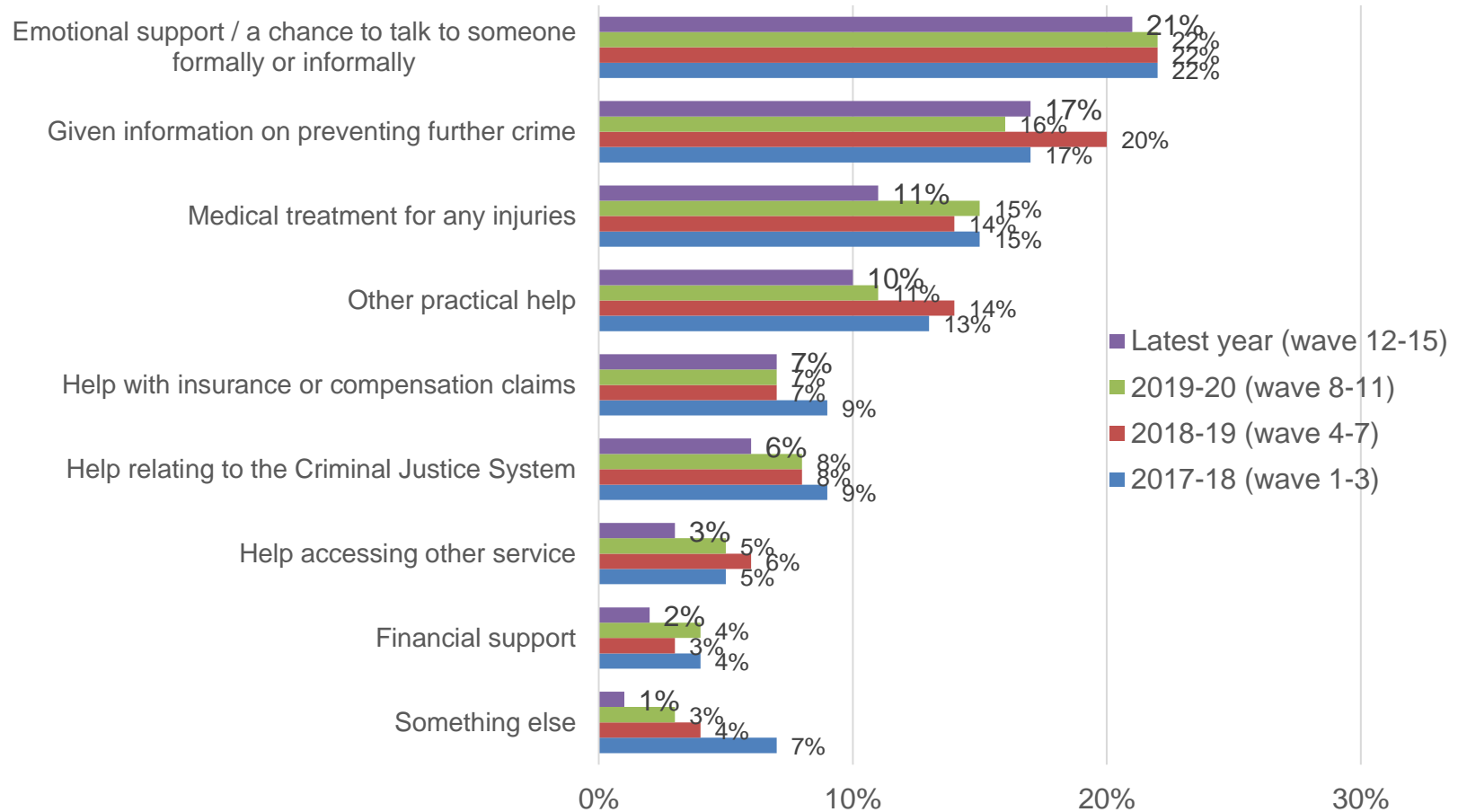


Proportion of reported and unreported crimes (excluding online fraud and computer viruses or malware)  
– Latest 2 years (wave 8-15)



# In the latest year, 38% of respondents who had been a victim of crime had received some form of information, advice or support

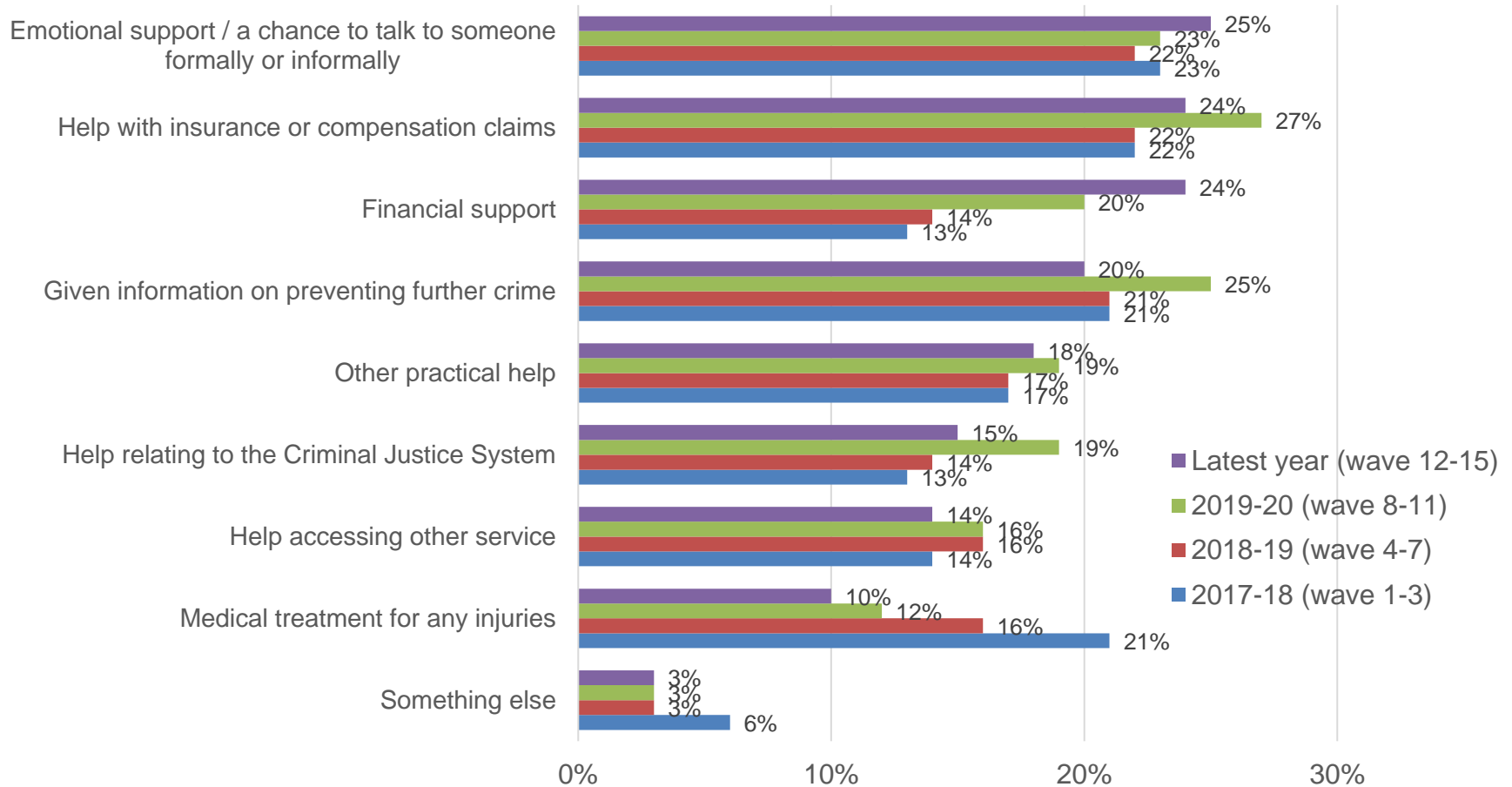
Did you receive any of the following types of information, advice or support when you were the victim of this crime?





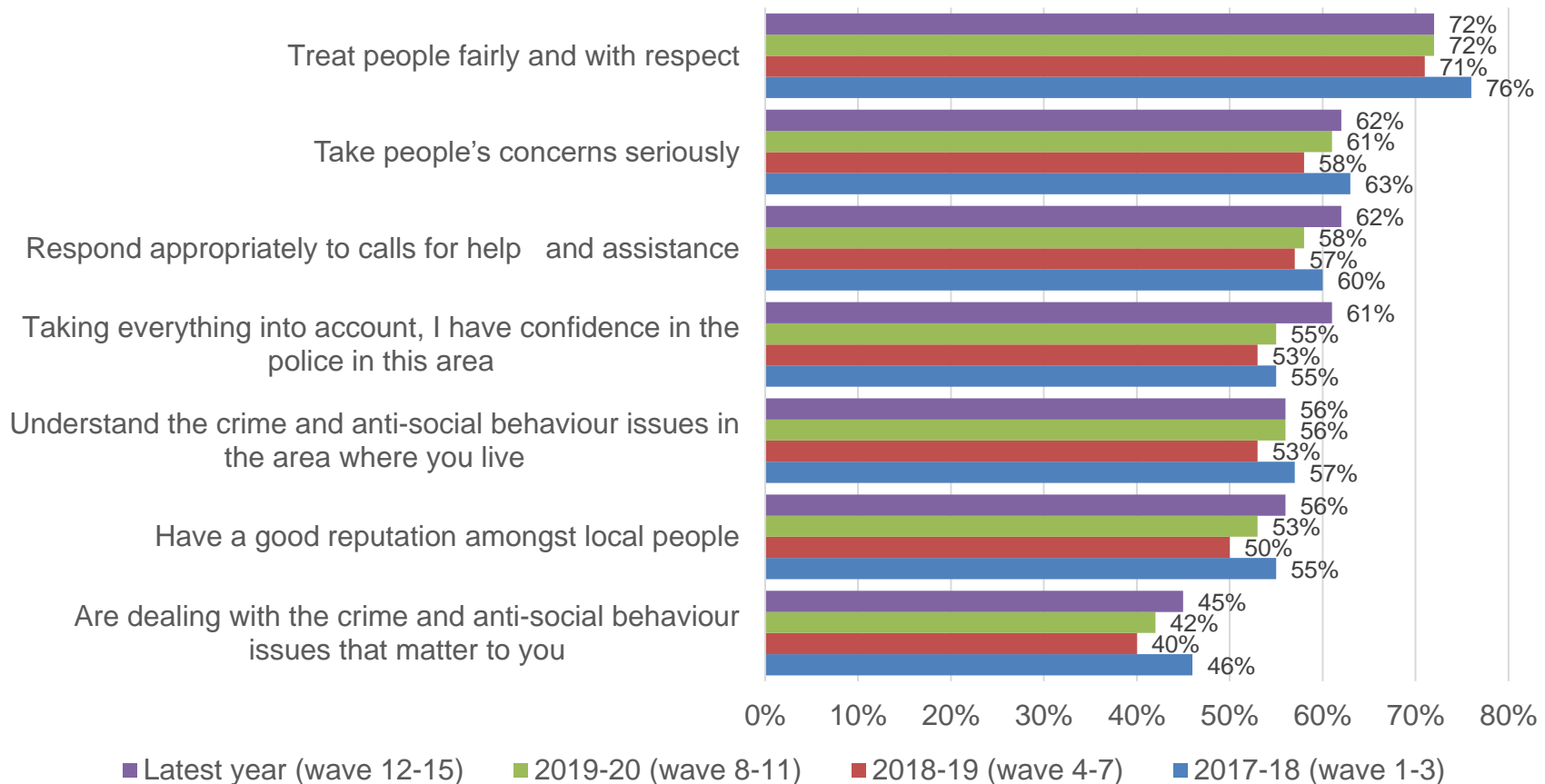
# In the latest year, 42% of respondents who had been a victim of crime would have liked to have received some form of information, advice or support

Would you have liked to receive any of the following types of information, advice or support when you were the victim of this crime?



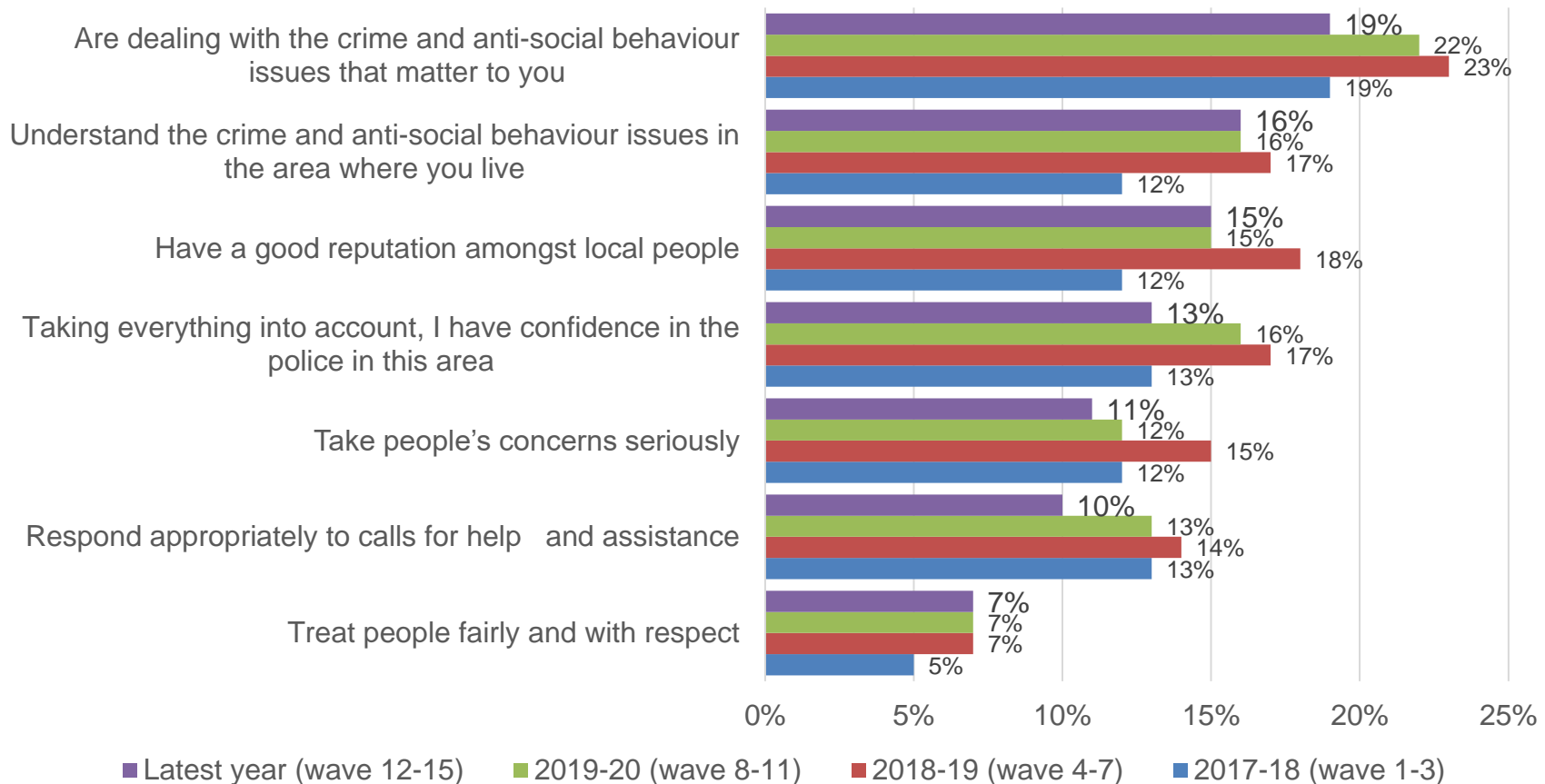
Excluding those who answered 'don't know', in the latest year 72% agreed that the police in their local area treat people fairly and with respect; small increases over recent periods for 5 of the statements.

Please say how much you agree or disagree with each of the following statements about the police in your local area: - **Strongly Agree & Agree** – Excluding 'Don't know'



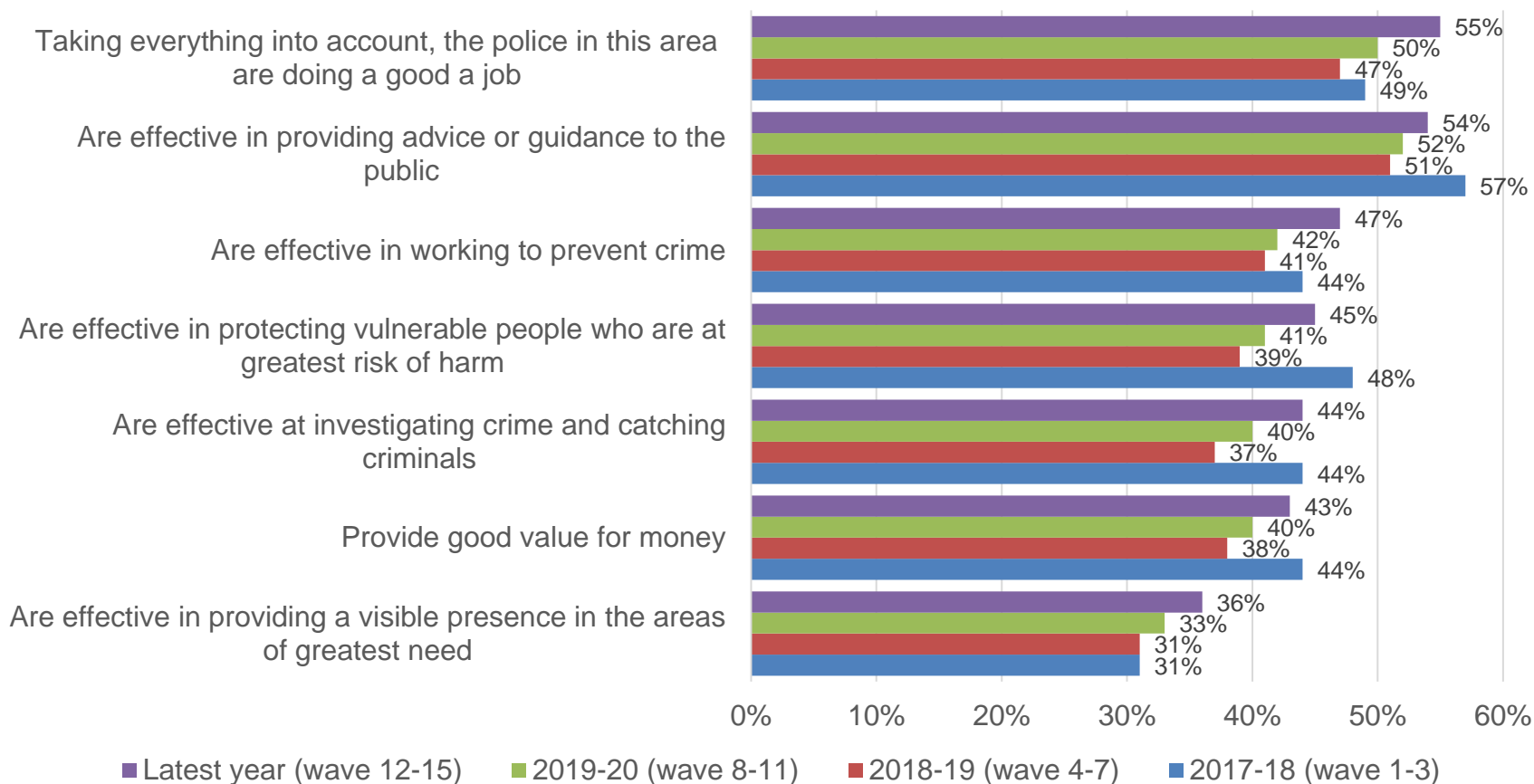
# Excluding those who answered 'don't know', in the latest year 19% of respondents disagreed that the police in their local area are dealing with the crime and anti-social behavior issues that matter to them

Please say how much you agree or disagree with each of the following statements about the police in your local area: - **Strongly Disagree & Disagree** – Excluding 'Don't know'



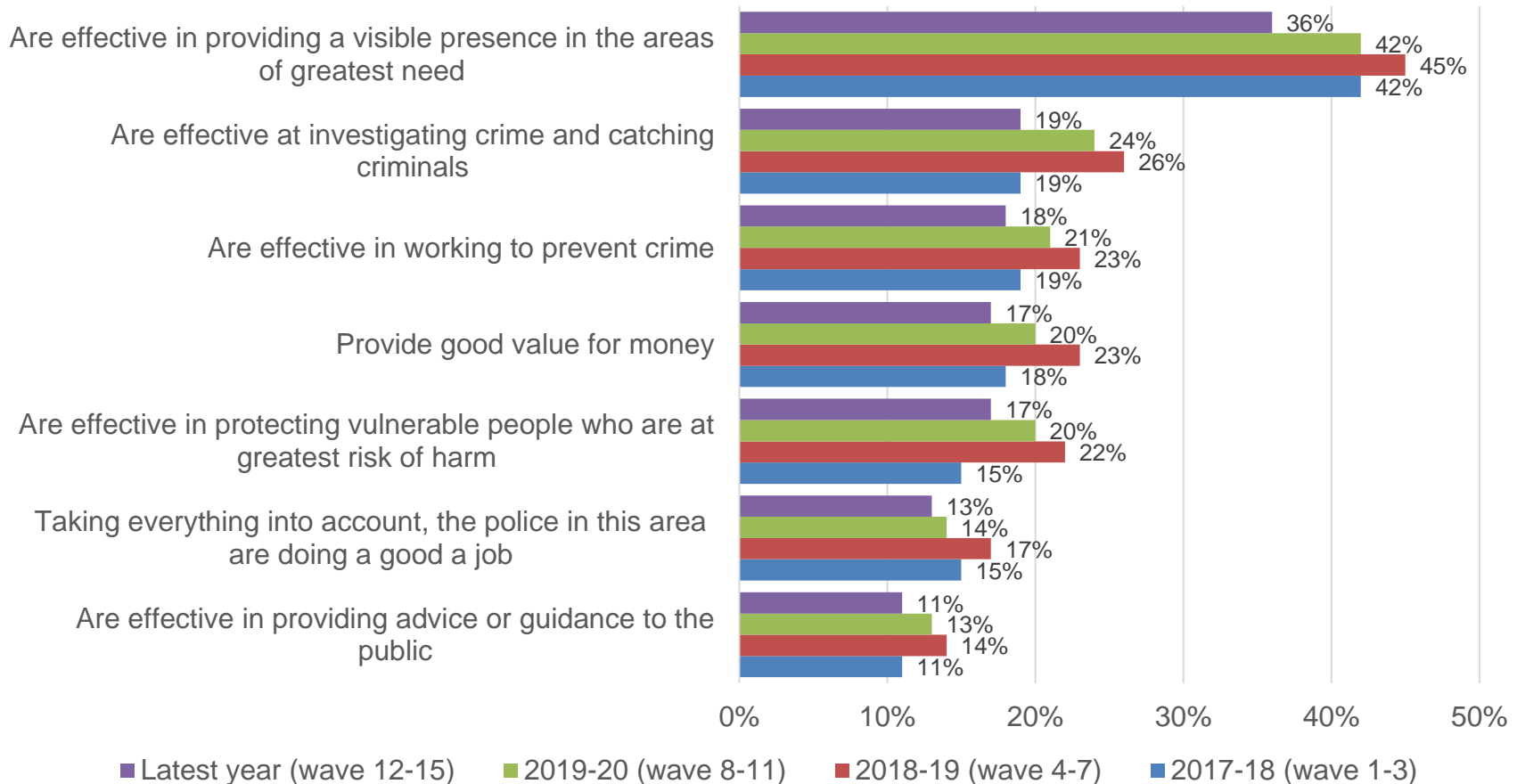
Excluding those who answered 'don't know', in the latest year 55% agreed that the police in their local area are doing a good job; small increases over recent periods for all statements.

Please say how much you agree or disagree with each of the following statements about the police in your local area: - **Strongly Agree & Agree** – Excluding 'Don't know'



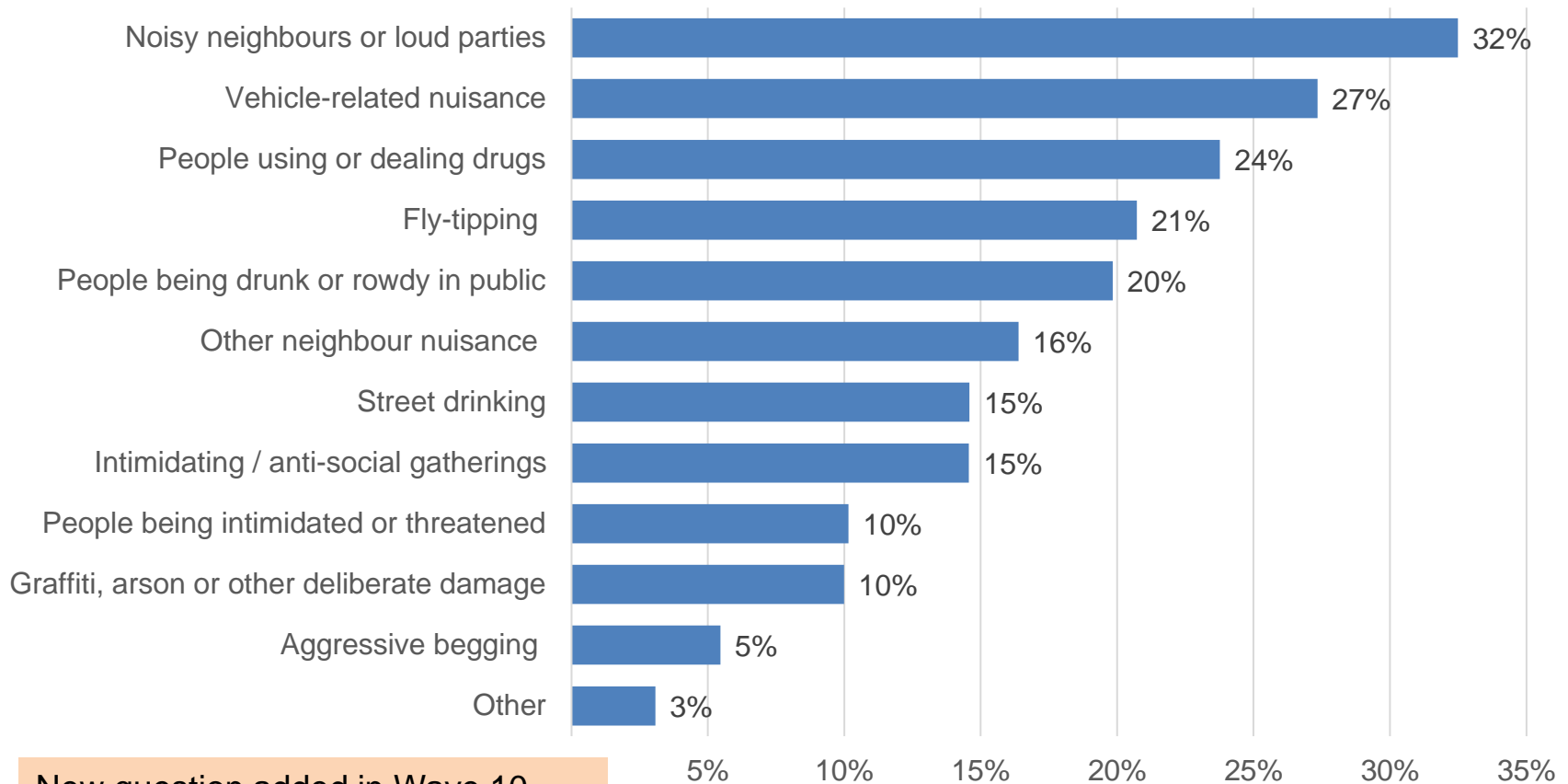
# Excluding those who answered 'don't know', in the latest year 36% of respondents disagreed that the police in their local area are effective in providing a visible presence in the area of greatest need

Please say how much you agree or disagree with each of the following statements about the police in your local area: - **Strongly Disagree & Disagree** – Excluding 'Don't know'



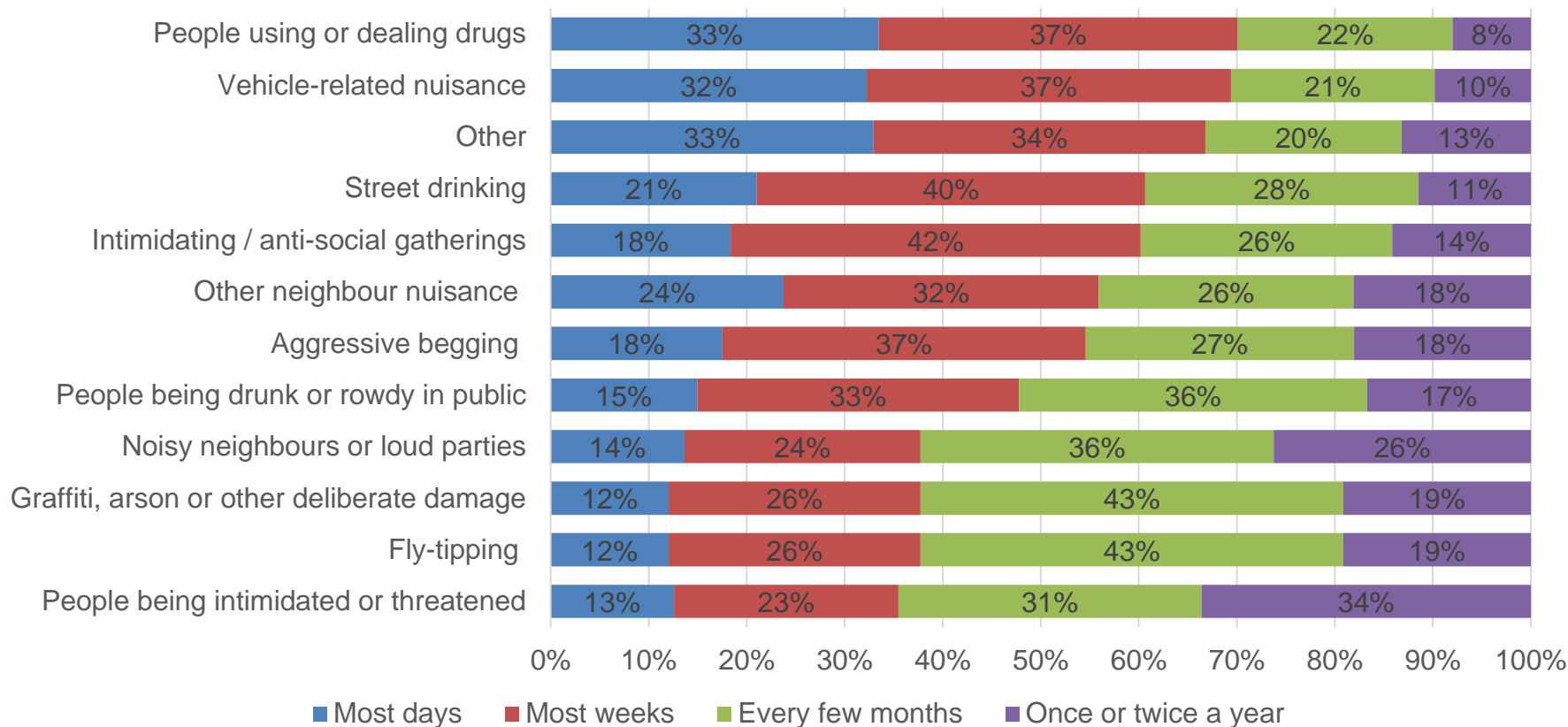
# Noisy neighbours or loud parties, vehicle-related nuisance and people using or dealing drugs are the top 3 types of ASB personally experienced by respondents over the last 12 months

Which of the following types of anti-social behaviour (ASB), if any, have you personally experienced **in your local neighbourhood** over the last 12 months? Latest year (wave 12-15)



# 70% of respondents who had personally experienced people using or dealing drugs in their local neighbourhood experienced this most weeks or more often

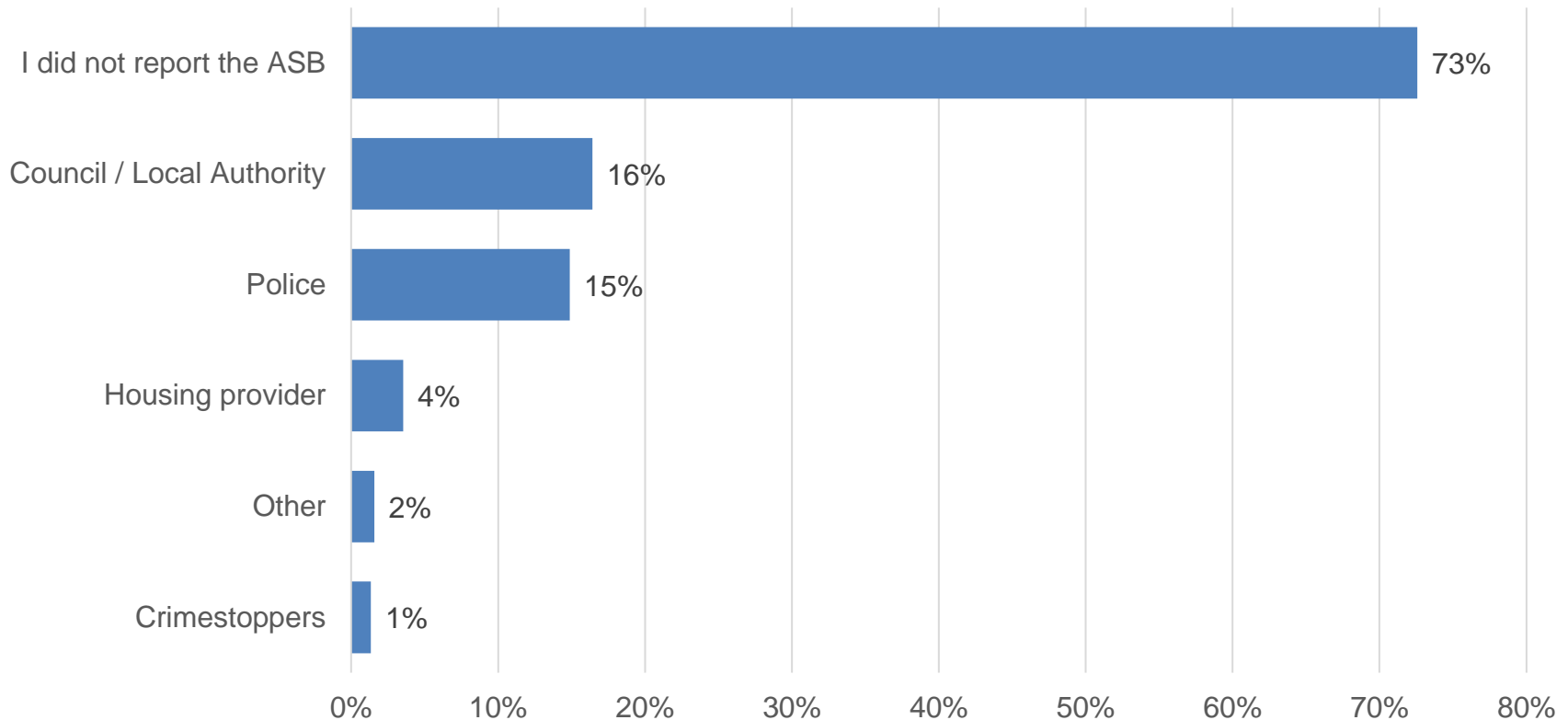
If you have experienced one or more types of ASB, please indicate how often this has happened - Latest year (wave 12-15)



New question added in Wave 10

# 73% of respondents who had personally experienced ASB in their local neighbourhood over the last year did not report it

If you have experienced one or more forms of ASB over the last year, which of the following agencies, if any, did you report the issue(s) to?  
Latest year (wave 12-15)

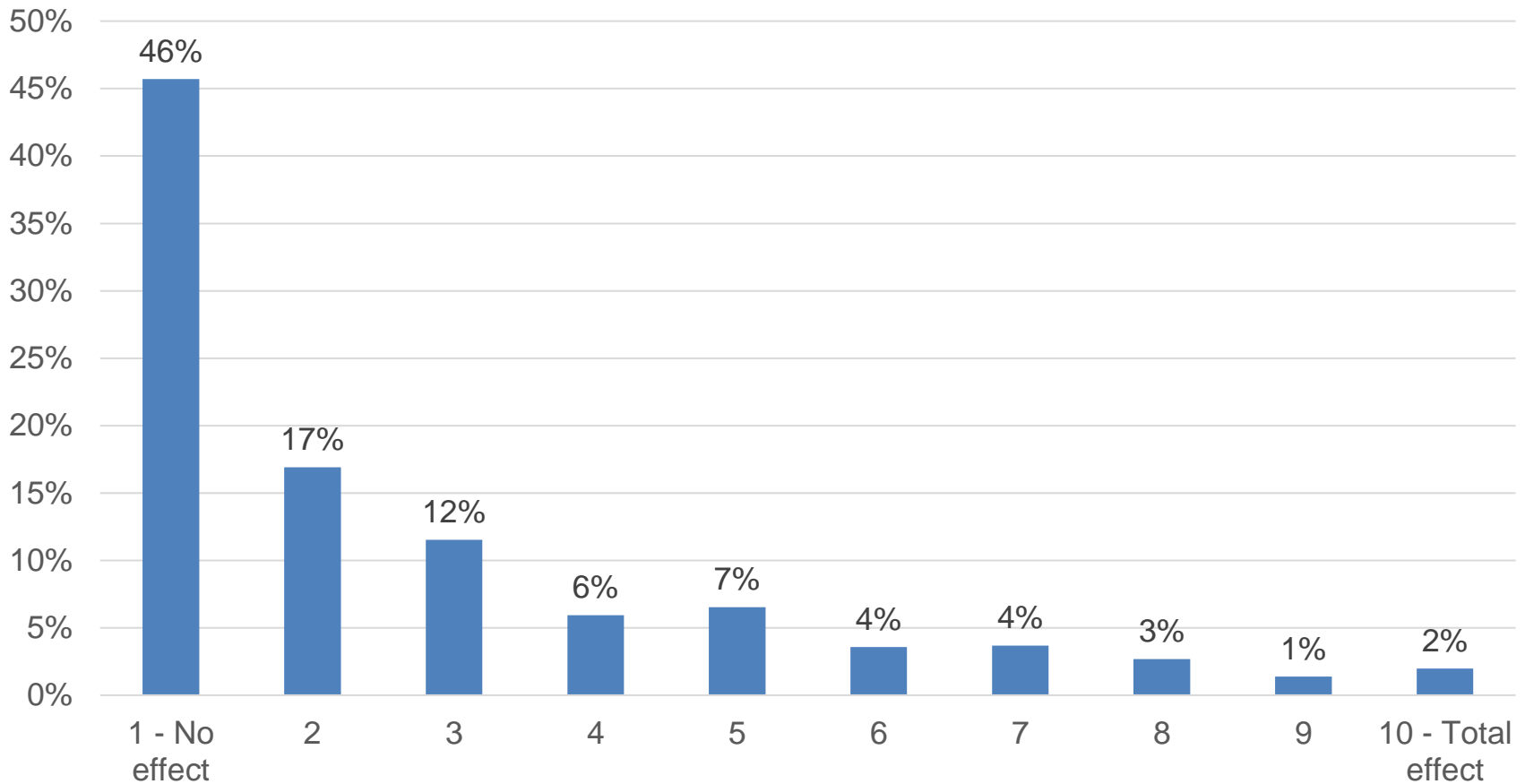


New question added in Wave 10



ASB has 'no effect' on the quality of life of 46% of respondents. The mean score is 2.7.

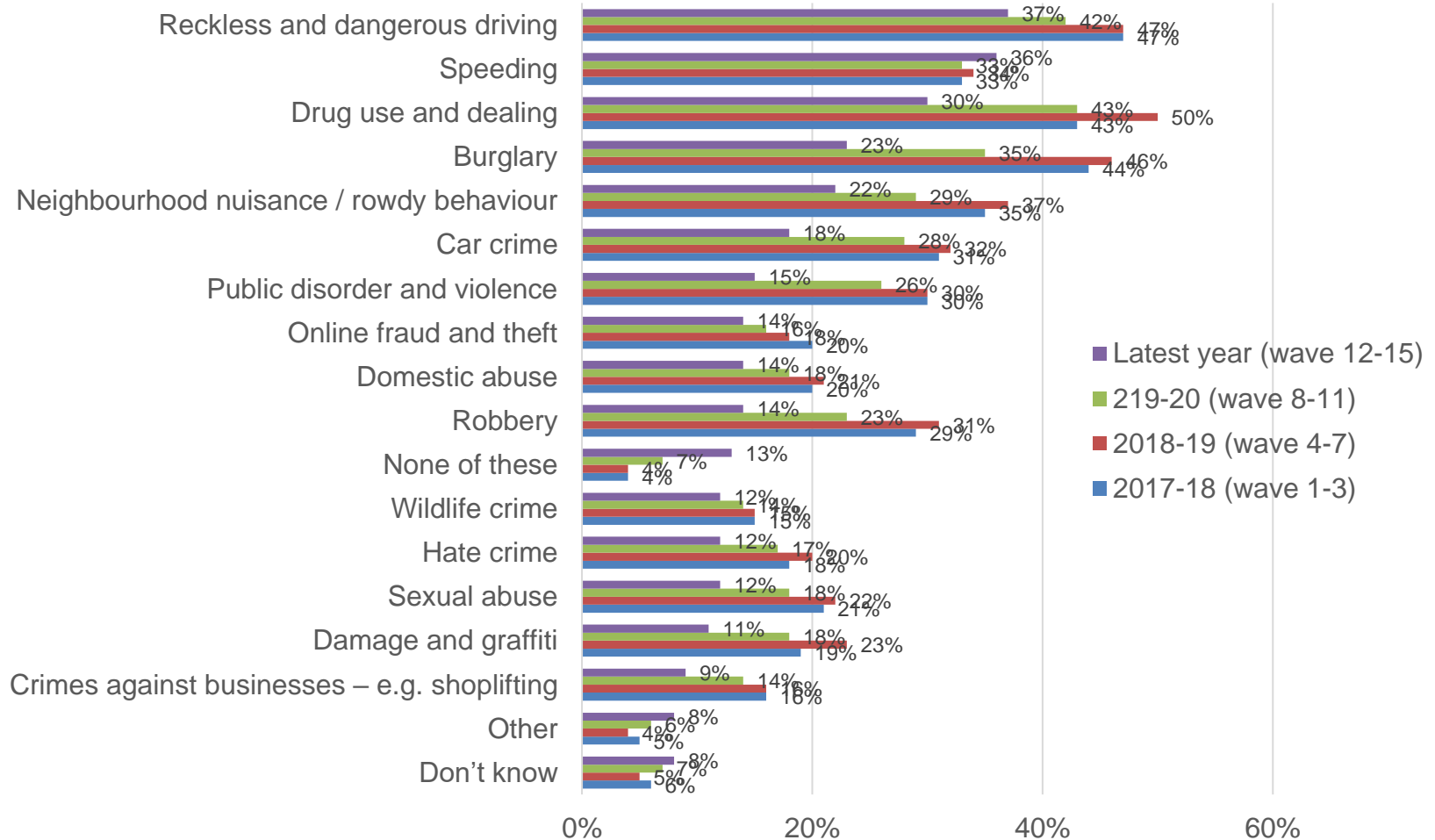
How much is your own quality of life affected by ASB?  
Latest year (wave 12-15)



New question added in Wave 10

# Reckless and dangerous driving, speeding and drug use and dealing, are the top crime and ASB issues respondents would like to see tackled (latest year data)

Are there any specific crime or anti-social behaviour issues that you would like to see the police and other agencies do more to tackle in your area?

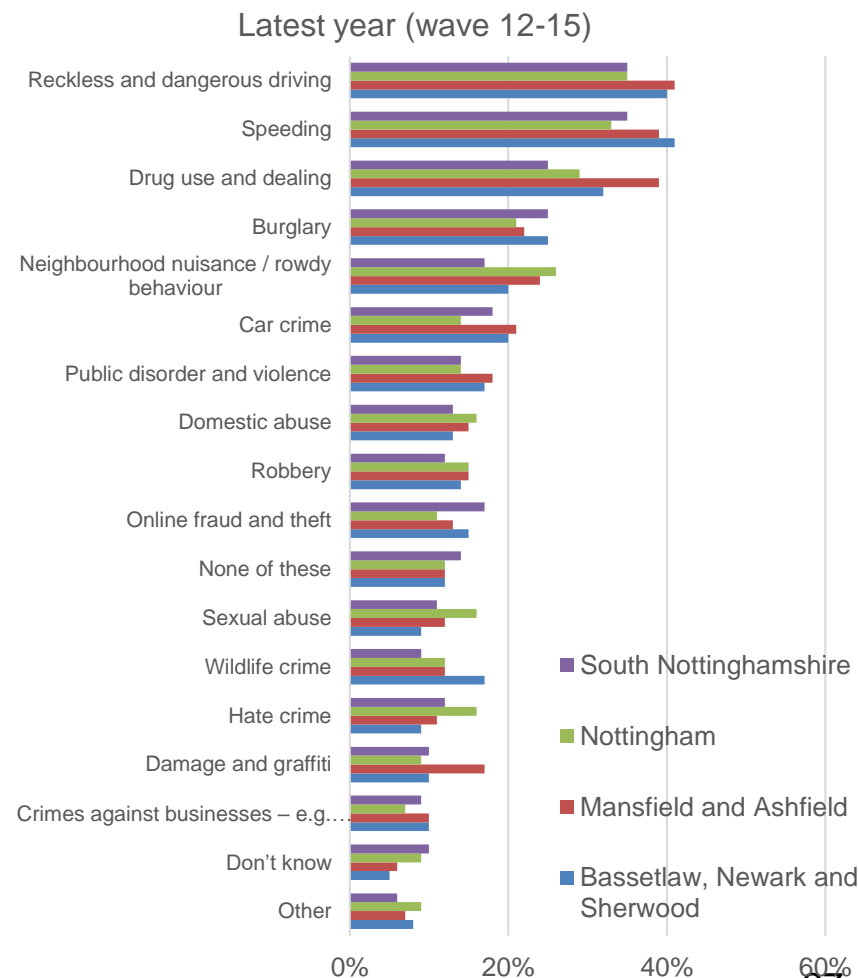
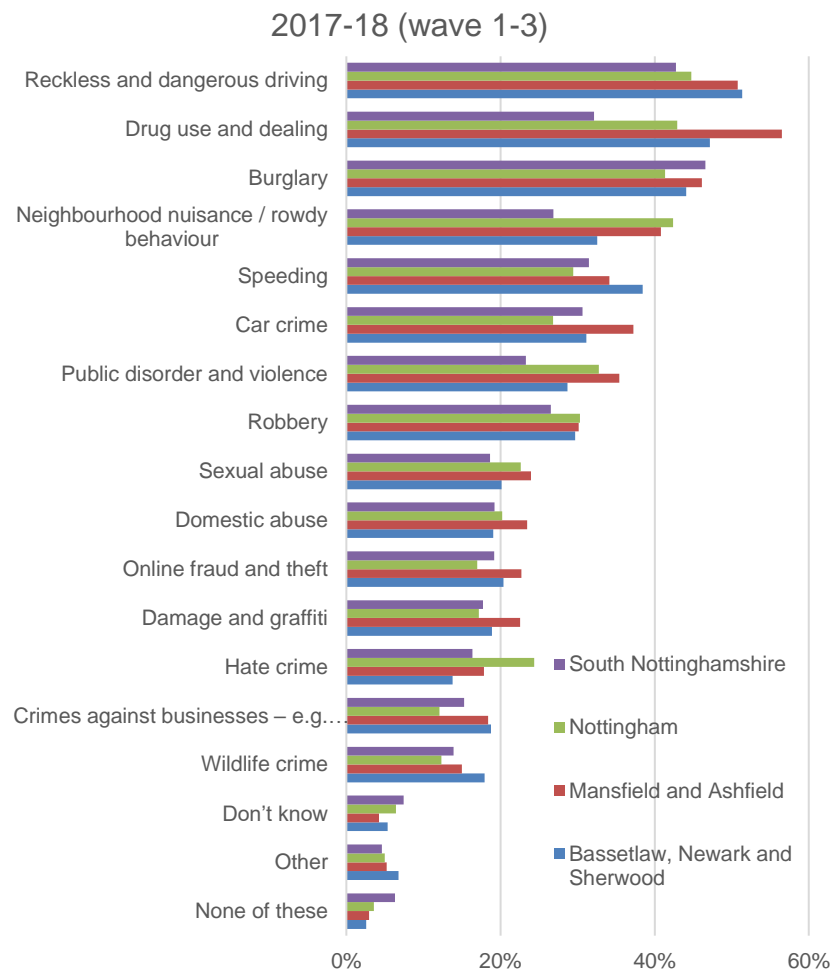


Base: 2017-18 = 3,094, 2019-18 = 4,051, 2019-20 = 3,790, Last 12 months (wave 12-15) = 3,615 Q: And are there any specific crime or anti-social behaviour issues that you would like to see the police and other agencies do more to tackle in your area?

# Reckless and dangerous driving was the top crime in Mansfield and Ashfield, Nottingham and South Nottinghamshire areas in the latest year. Speeding was the top crime in Bassetlaw, Newark and Sherwood.

2017-18 and latest year

Are there any specific crime or anti-social behaviour issues that you would like to see the police and other agencies do more to tackle in your area?

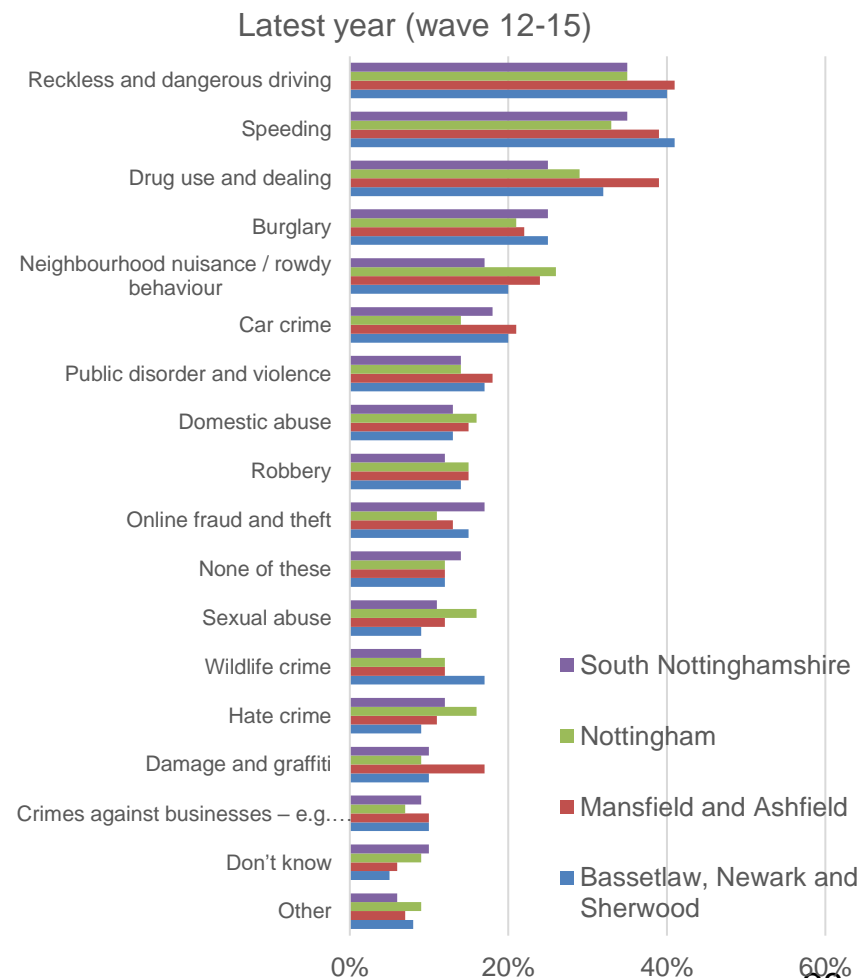
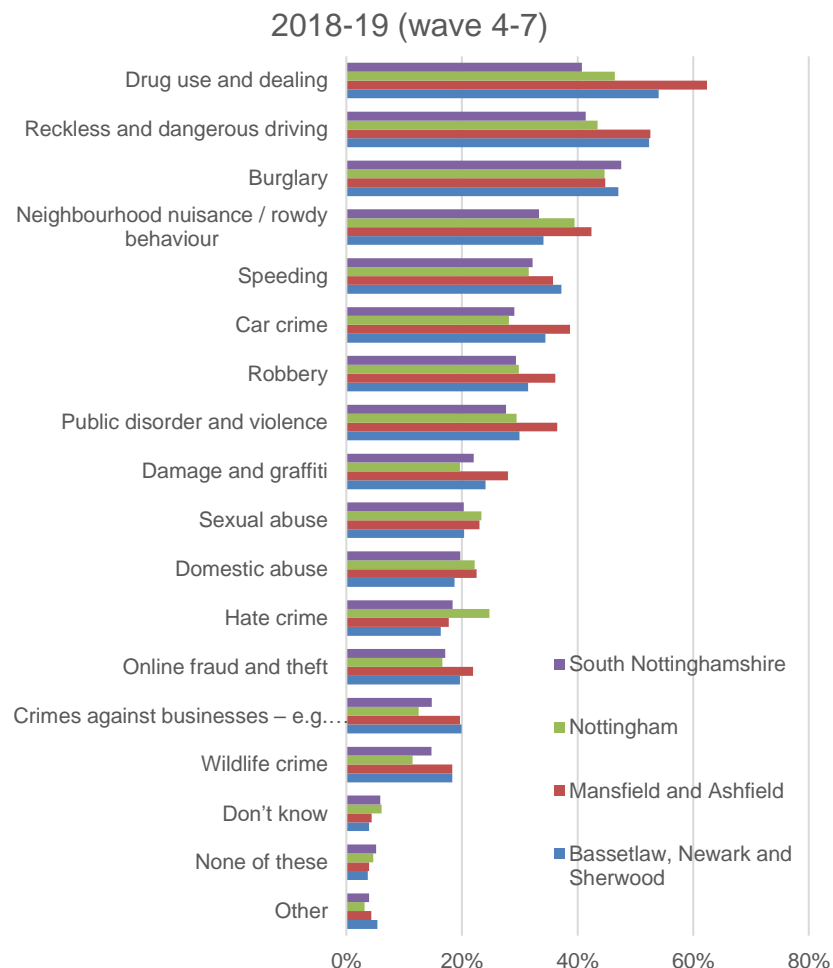


Base: 2017-18 = 3,094, 2019-18 = 4,051, 2019-20 = 3,790, Last 12 months (wave 12-15) = 3,615 Q: And are there any specific crime or anti-social behaviour issues that you would like to see the police and other agencies do more to tackle in your area?

# Reckless and dangerous driving was the top crime in Mansfield and Ashfield, Nottingham and South Nottinghamshire areas in the latest year. Speeding was the top crime in Bassetlaw, Newark and Sherwood.

2018-19 and latest year

Are there any specific crime or anti-social behaviour issues that you would like to see the police and other agencies do more to tackle in your area?

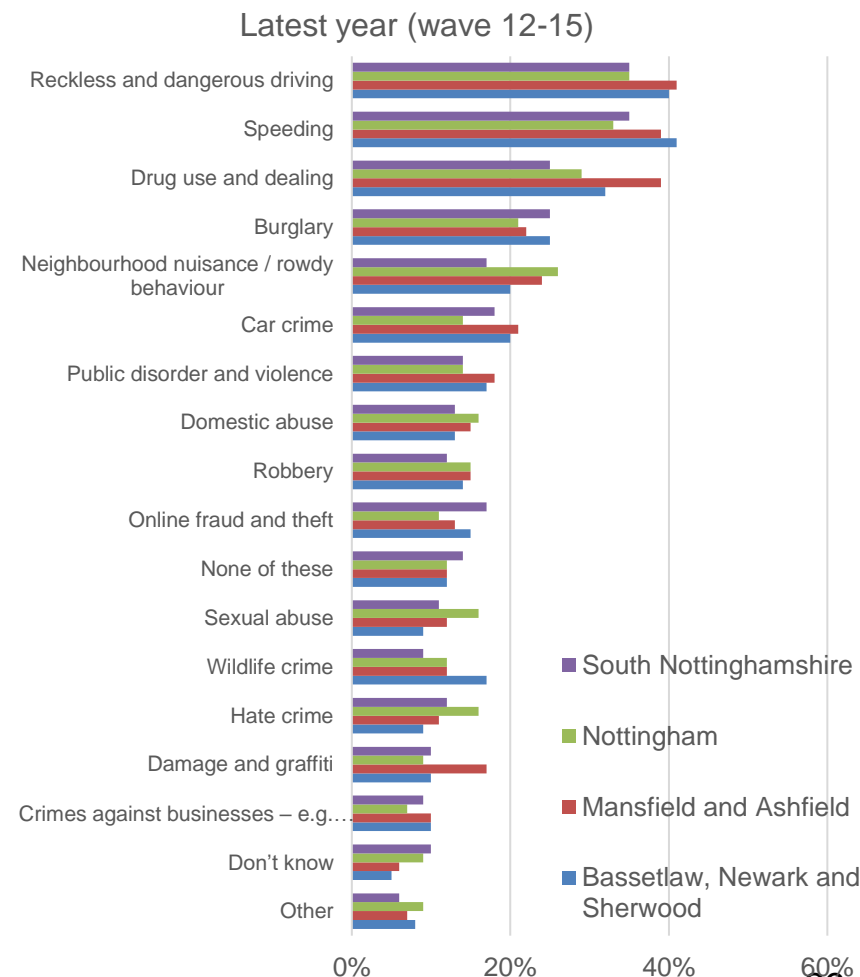
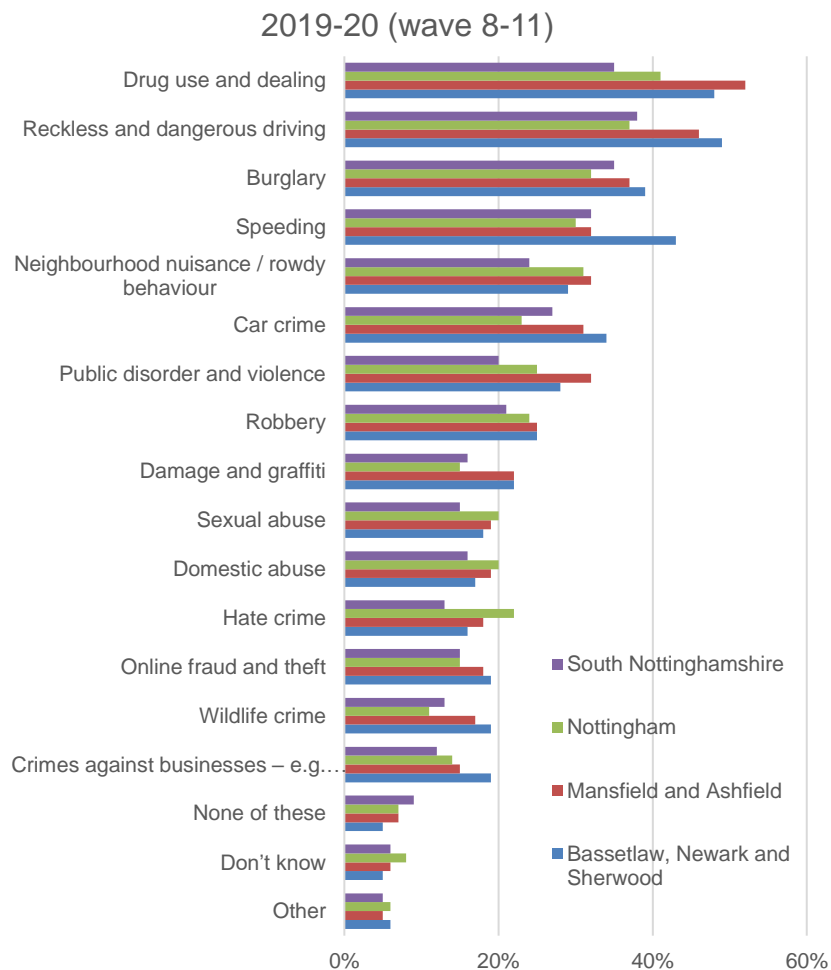


Base: 2017-18 = 3,094, 2019-18 = 4,051, 2019-20 = 3,790, Last 12 months (wave 12-15) = 3,615 Q: And are there any specific crime or anti-social behaviour issues that you would like to see the police and other agencies do more to tackle in your area?

# Reckless and dangerous driving was the top crime in Mansfield and Ashfield, Nottingham and South Nottinghamshire areas in the latest year. Speeding was the top crime in Bassetlaw, Newark and Sherwood..

2019-20 and latest year

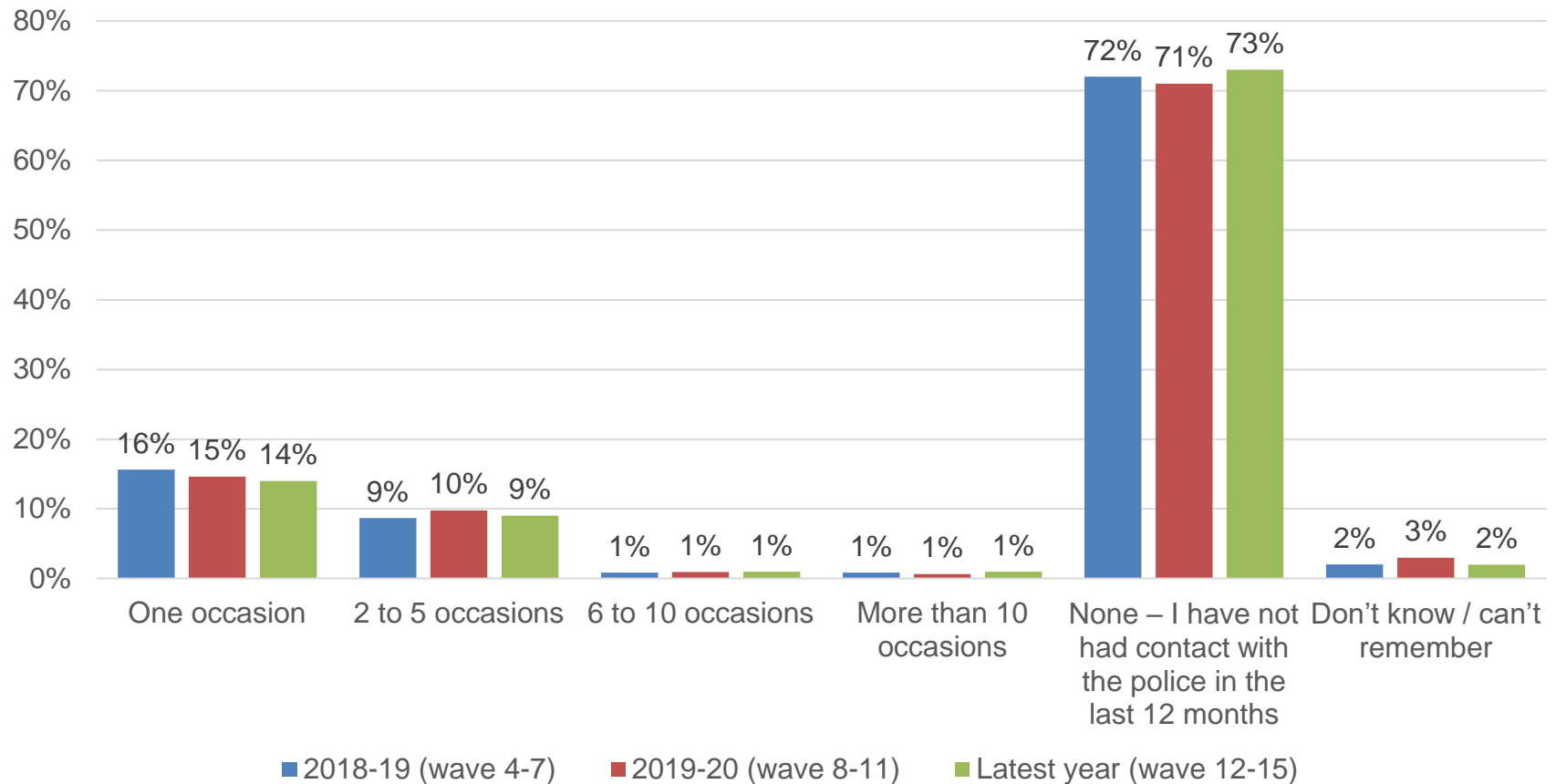
Are there any specific crime or anti-social behaviour issues that you would like to see the police and other agencies do more to tackle in your area?



Base: 2017-18 = 3,094, 2019-18 = 4,051, 2019-20 = 3,790, Last 12 months (wave 12-15) = 3,615 Q: And are there any specific crime or anti-social behaviour issues that you would like to see the police and other agencies do more to tackle in your area?

## 25% respondents had contacted Nottinghamshire Police in the last 12 months in the latest year.

On how many occasions in the past 12 months have you had contact with Nottinghamshire Police?

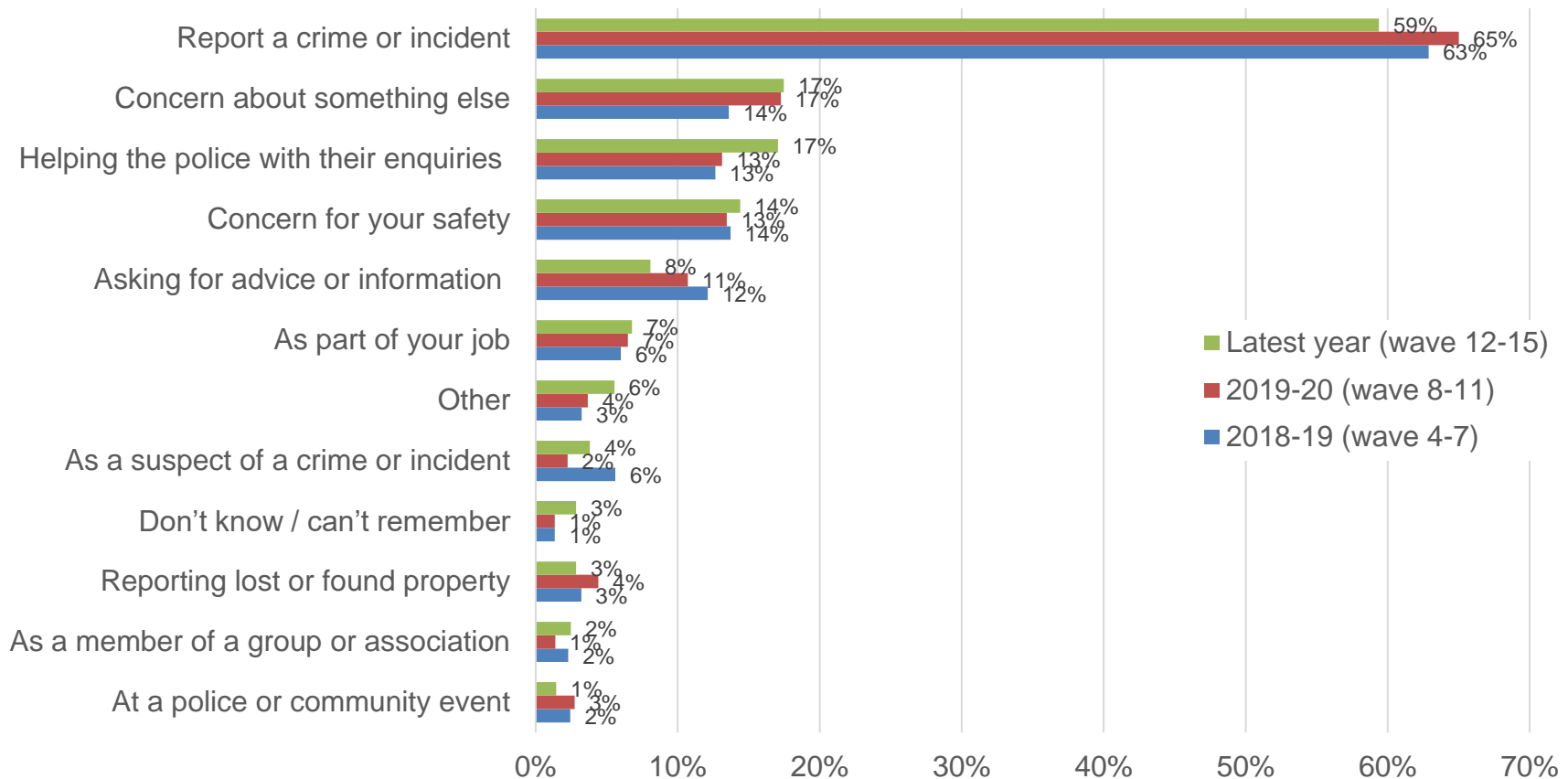


Question added in Wave 6

Base: 2019-18 = 1,988, 2019-20 = 3,990, Last 12 months (wave 12-15) = 3,997, Q: On how many occasions in the past 12 months have you had contact with Nottinghamshire Police?

Of the 25% of respondents that had contacted the police in the last 12 months, 59% had done so to report a crime or incident in the latest year.

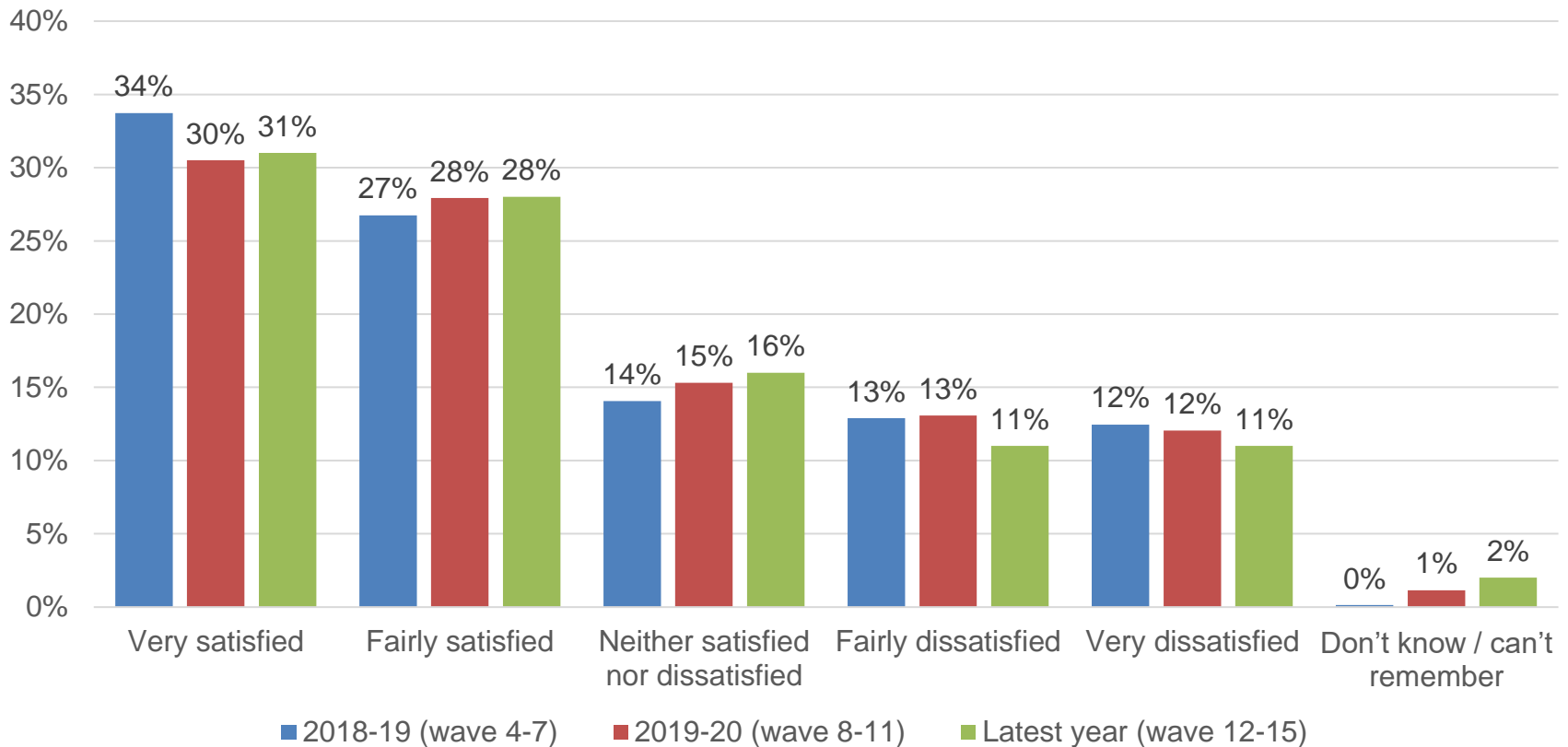
Thinking back to the occasions that you have had contact with the police over the last 12 months, what were the reasons?



Question added in wave 6

# 59% were satisfied with the service they received from Nottinghamshire Police in the latest year; 22% were dissatisfied

Thinking back to the last occasion that you had contact with Nottinghamshire Police, overall how satisfied or dissatisfied were you with the service you received?



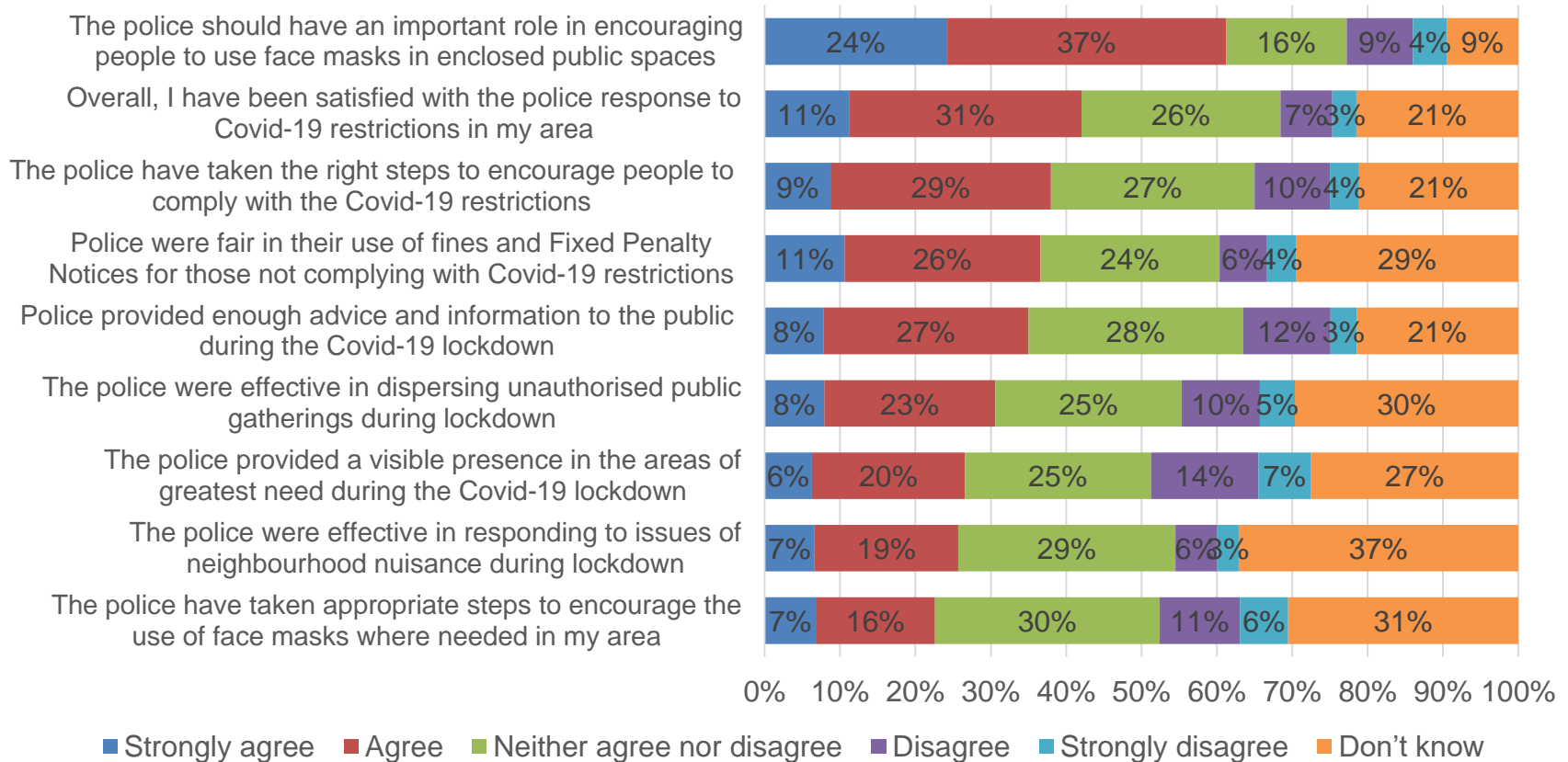
Question added in wave 6

Base: 2019-18 = 503, 2019-20 = 1,012, Last 12 months (wave 12-15) = x Q: Thinking back to the last occasion that you had contact with Nottinghamshire Police, overall how satisfied or dissatisfied were you with the service you received?



# 61% agreed that police should have an important role in encouraging people to use face masks in enclosed public spaces

To what extent do you agree or disagree with the following statements about Nottinghamshire police's response to the Coronavirus restrictions in your area?



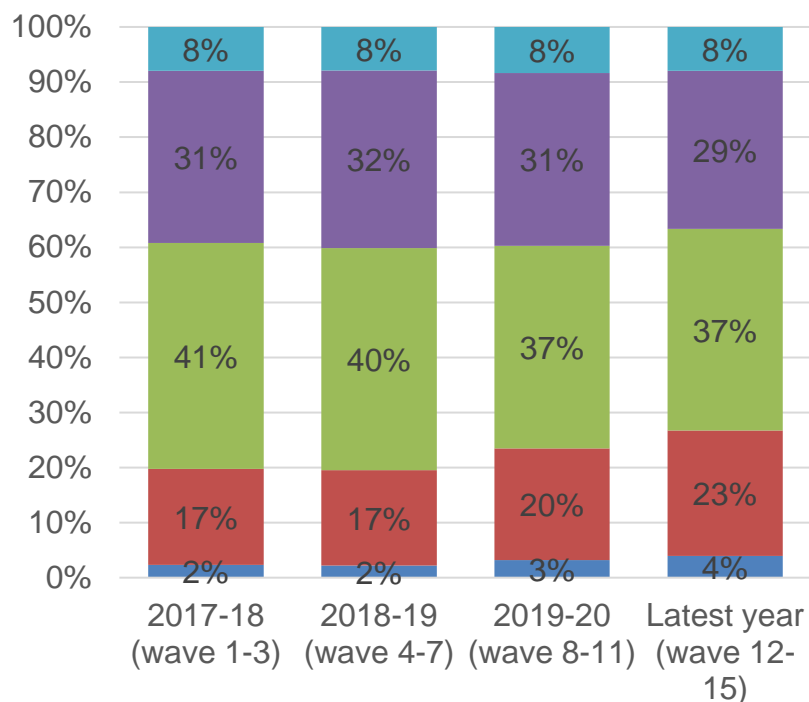
Question added in wave 12

33

Base: Wave 12-15 = 2,909 – 2,931 Q: To what extent do you agree or disagree with the following statements about Nottinghamshire police's response to the Coronavirus restrictions in your area?

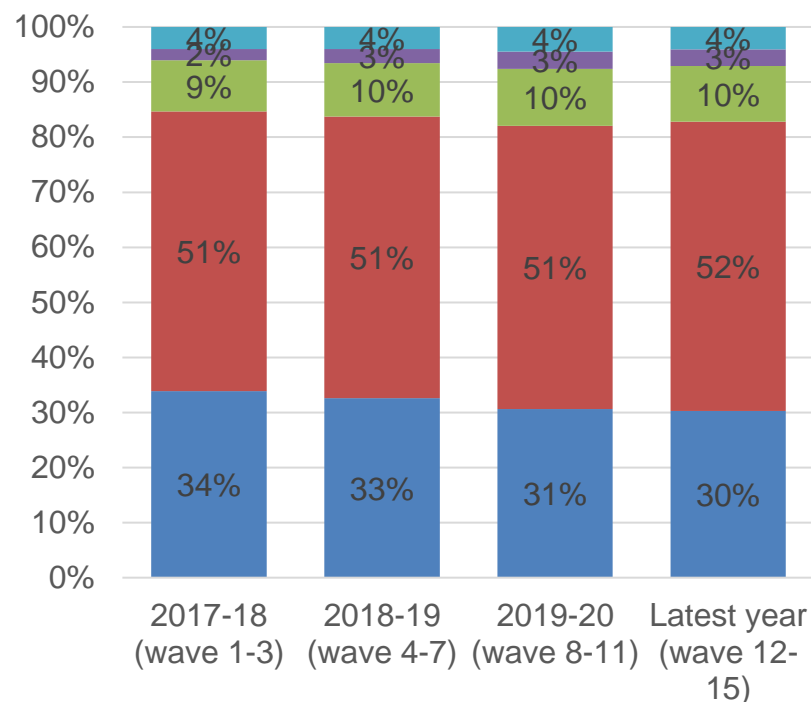
In the latest year, 27% of respondents feel well informed about what the police in their local area doing and 83% are interested in what the police are doing in their local area

How well informed do you feel about what the police in your local area are doing?



■ Very well informed    ■ Fairly well informed  
■ Not very well informed    ■ Not at all informed  
■ Don't know

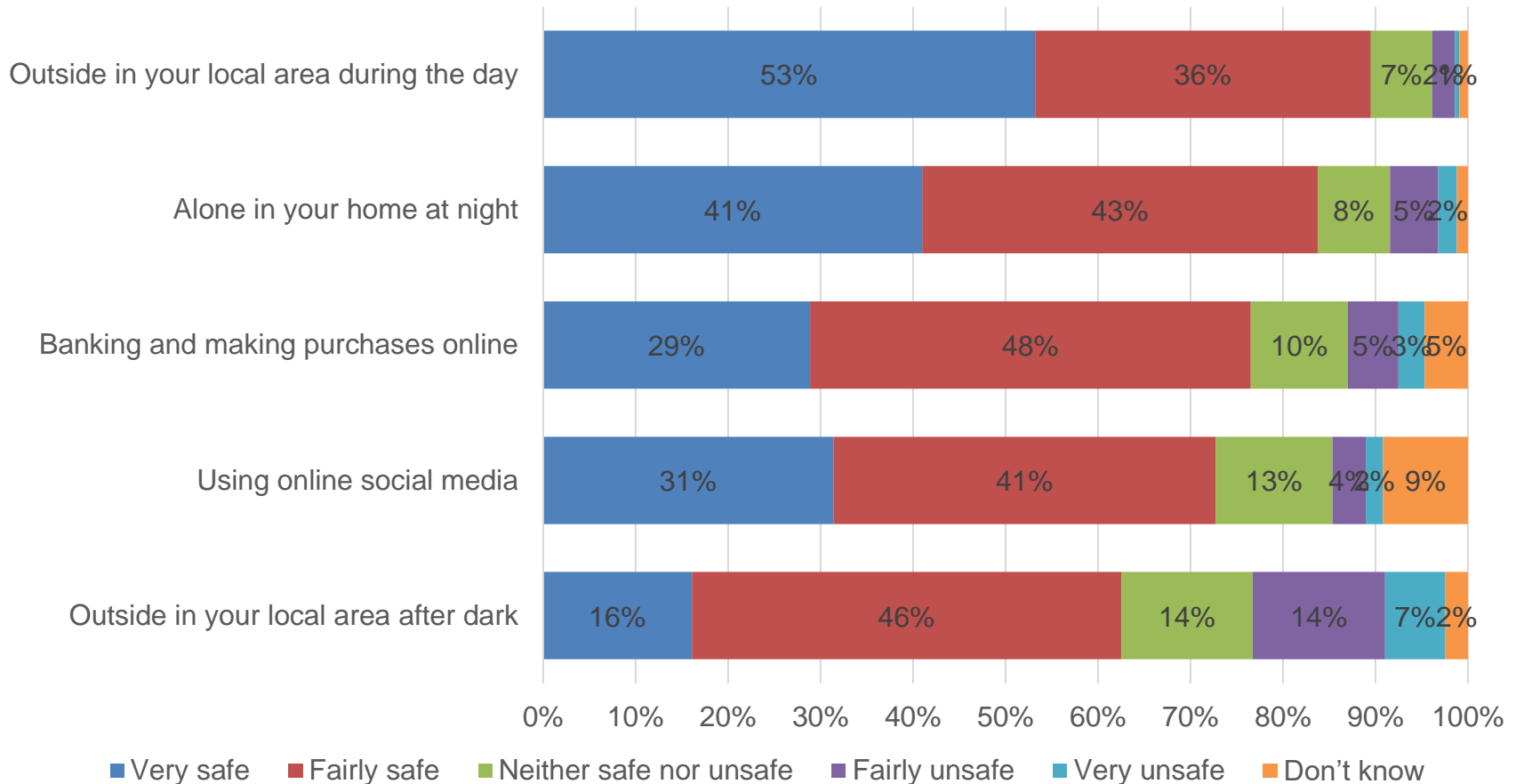
How interested, if at all, are you in knowing what the police are doing in your local area?



■ Very interested    ■ Fairly interested  
■ Not very interested    ■ Not at all interested  
■ Don't know

In the latest year, 90% of respondents feel very or fairly safe outside in their local area during the day – this falls to 63% when outside in their local area after dark

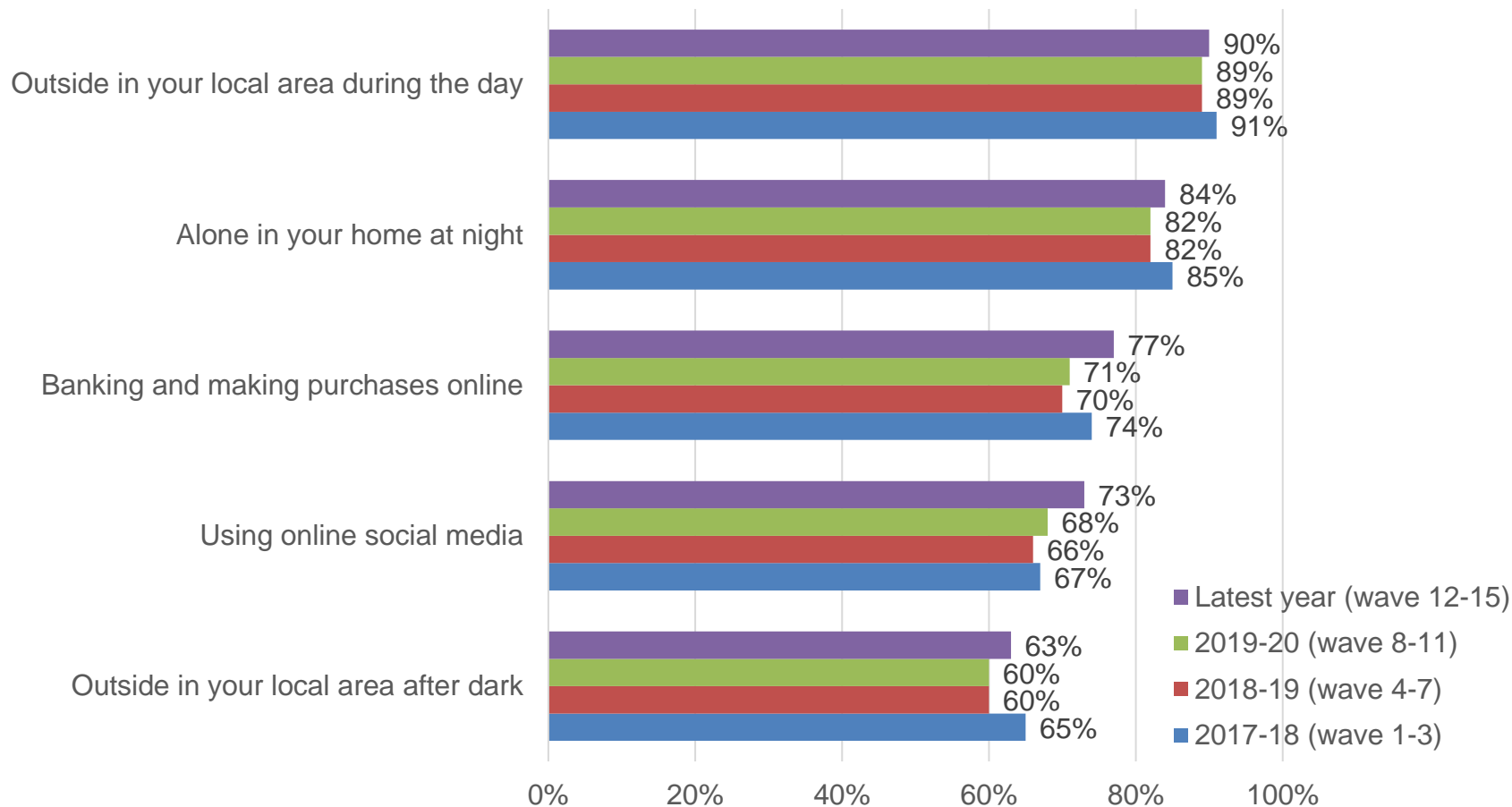
Please say how safe or unsafe you generally feel in the following situations: Latest year (wave 12-15)



Base: Last 12 months = 4,044 - 4,120 Q: Please say how safe or unsafe you generally feel in the following situations:

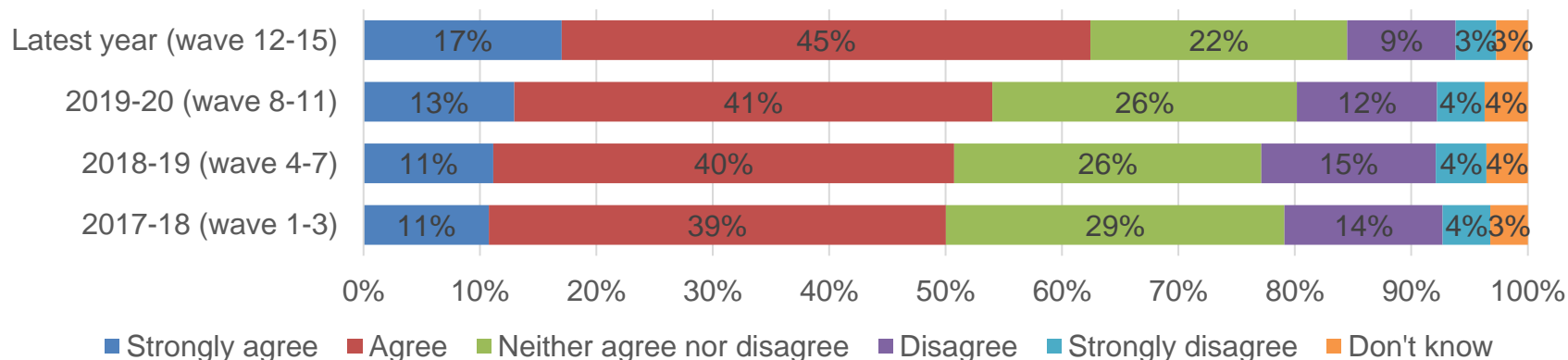
There are small changes in the perceptions of community safety between the latest year and 2017-18; indication of small improvements in some perceptions in latest year.

Please say how safe or unsafe you generally feel in the following situations: Very & fairly safe

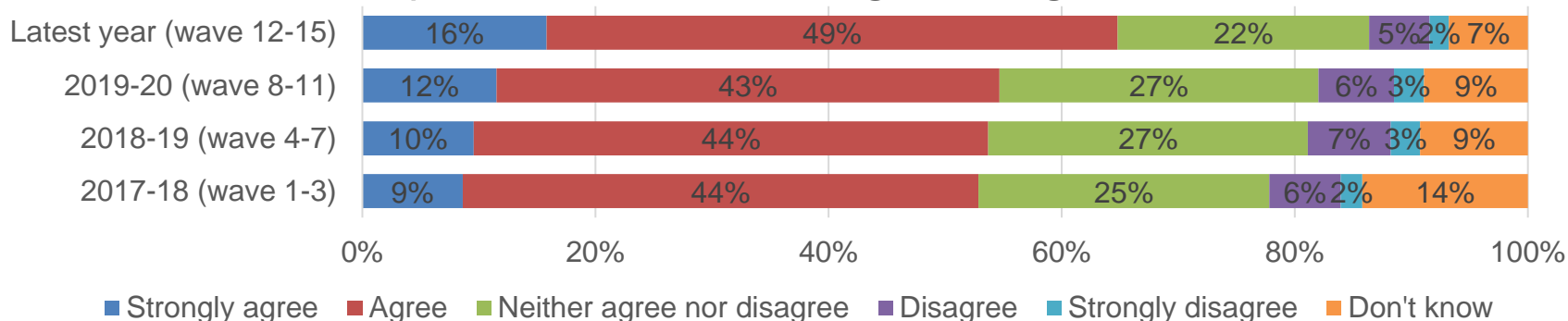


In the latest year, 62% agree that people from different backgrounds get on well and 65% agree that there is a sense of community where they live. The results are higher than in 2017-18.

### There is a sense of community



### People from different backgrounds get on well

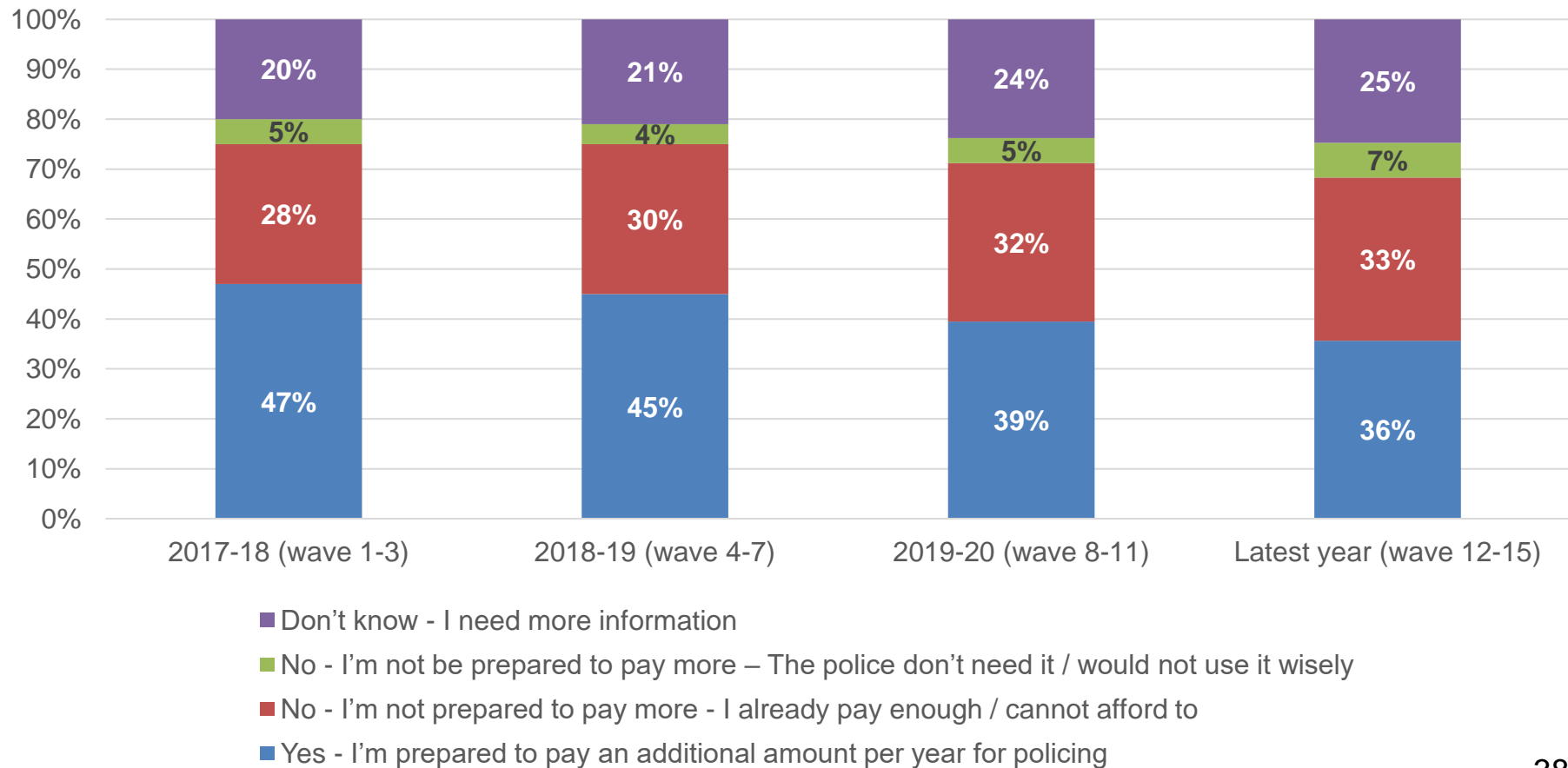


The statement was 'People from different ethnic backgrounds get on well' in 2017/18 wave 3

37

In the latest year, 36% of respondents would be prepared to pay more council tax towards policing, compared to 40% that would not. The proportion prepared to pay more is lower than in 2017-18.

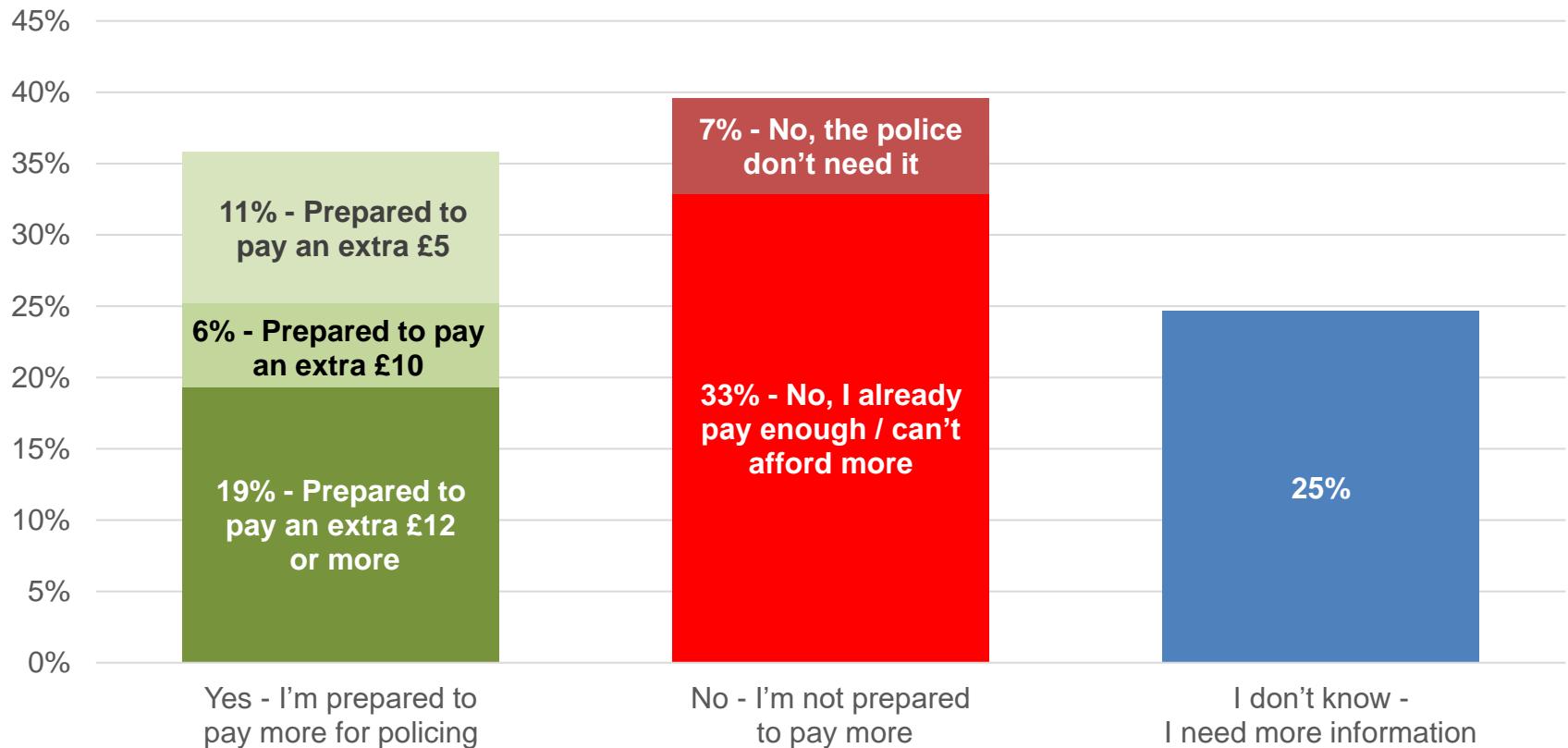
Households in Nottinghamshire pay, on average, £244 a year towards policing as part of their Council Tax (Band D properties). To what extent would you be prepared to pay more?



Base: 2017-18 = 3,071, 2018-19 = 4,134, 2019-20 = 4,053, Last 12 months = 4,092 Q: Households in Nottinghamshire pay, on average, £244 a year towards policing as part of their Council Tax (Band D properties). To what extent would you be prepared to pay more?

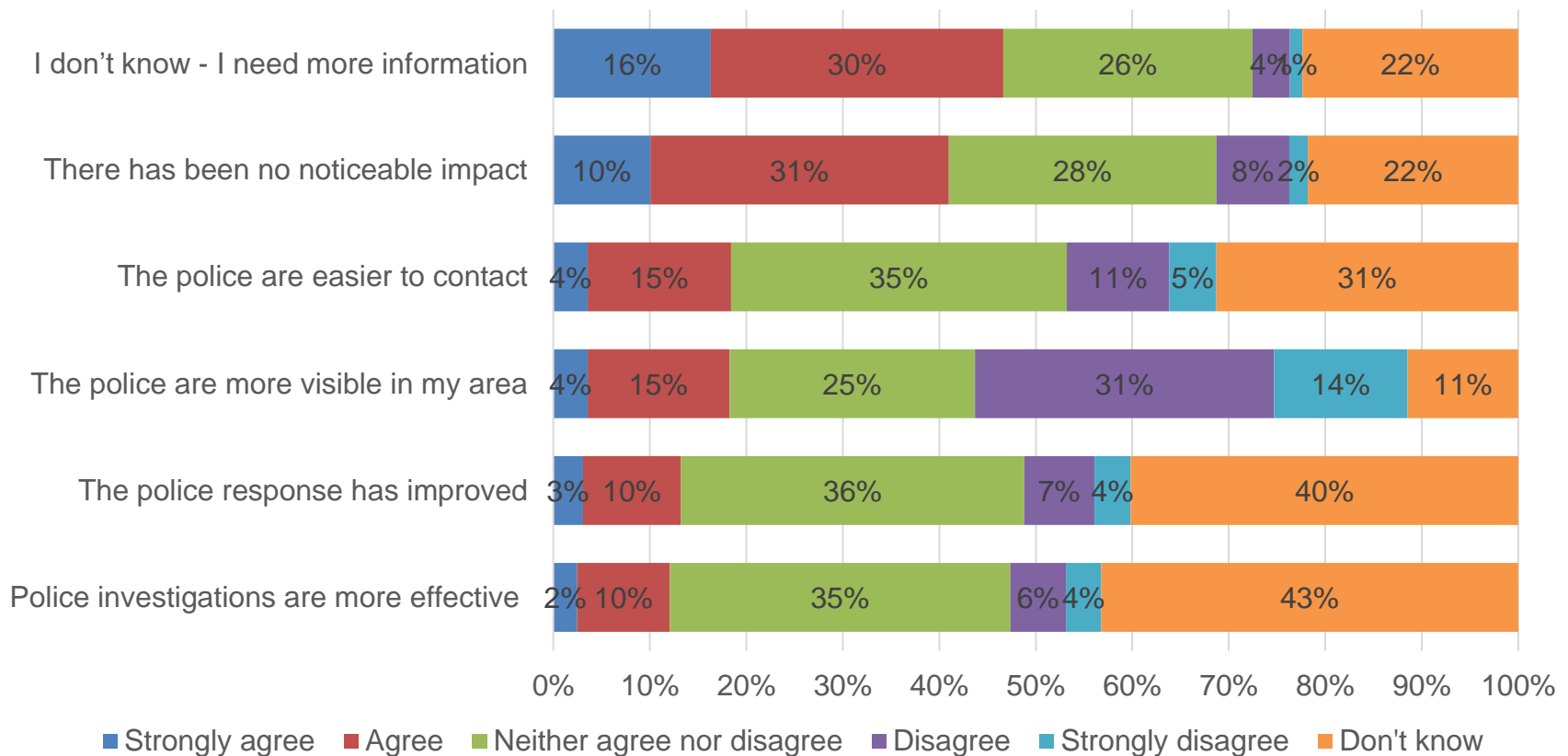
In the latest year, 36% of respondents would be prepared to pay more council tax towards policing, compared to 40% that would not.

Households in Nottinghamshire pay, on average, £244 a year towards policing as part of their Council Tax (Band D properties). To what extent would you be prepared to pay more?



# 41% of respondents thought that there has been no noticeable impact from the extra investment on policing in their area; 47% would need more information to give an opinion

What impact, if any, do you feel that this extra investment is having on policing in your area? Latest year (wave 12-15)



New question added in wave 10

Base: Wave 12-15 = 3,226 - 3,988 Q: What impact, if any, do you feel that this extra investment is having on policing in your area?